

# Monkey in the Middle

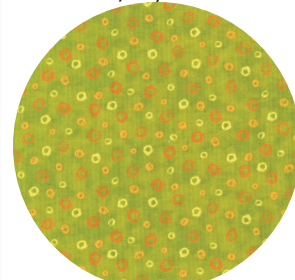
featuring  
**animal party!**  
Amy Schimmler



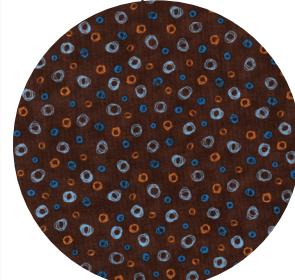
AQR-7819-169 Earth  
3/4 yard



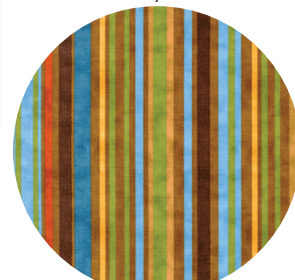
AQR-7815-169 Earth  
3/4 yard



AQR-7814-50 Lime  
1 yard



AQR-7814-167 Chocolate  
1/4 yard



AQR-7818-169 Earth  
5/8 yard

[www.robertkaufman.com](http://www.robertkaufman.com)  
**ROBERTKAUFMAN**  
F A B R I C S

**animal party!**

by Amy Schimmler

to benefit the charity organization

**Quilts for Kids**

A percentage of the wholesale cost of this fabric collection  
will be donated to Quilts For Kids, Inc.



# Monkey in the Middle

Quilt designed & Pieced by Nancy H. Lacey, Quilted by Karen Thompson, Poppy Court Quilting      Quilt approximate size 38" x 50"  
All border strip length measurements are approximate. Please measure your quilt top before cutting the length of each border.

## Fabric Requirements

Fabric A-Blue Monkeys, AQK 7819-169	3/4 yard
Fabric B-Brown Animal Bubbles, AQK 7815-169	3/4 yard
Fabric C-Green Dots, AQK 7814-50	1 yard
Fabric D-Brown Dots, AQK 7814-167	1/4 yard
Fabric E-Brown Stripe, AQK 7818-169	5/8 yard
Backing- Your Choice	1-3/4 yards

## Cutting Instructions

Fabric A-	Cut eighteen 6-1/2" squares.
Fabric B-	Cut seventeen 6-1/2" squares.
Fabric C-	Cut seventy-two 2-7/8" squares. Cut five 2-1/2" x width of fabric (WOF) strips for the binding.
Fabric D-	Cut two 1-1/2" x 42-1/2" strips and two 1-1/2" x 32-1/2" strips for the inner border.
Fabric E-	Cut three 3-1/2" x WOF strips. Piece the strips together to make two 3-1/2" x 44-1/2" strips for the outer border. Cut two 3-1/2" x 38-1/2" strips for the outer border.
Backing-	Cut one 43" x 58" piece for the backing.

## Assembly Instructions:

- 1) To make one square-in-a-square block, place one 2-7/8" Fabric C square to the top left corner of one 6-1/2" Fabric A square, right sides together (fig. 1). Sew across the diagonal of the smaller square from the upper right corner to the lower left corner (fig. 1). Flip open the triangle formed and press (fig. 2). Trim away the excess fabric 1/4" from behind the triangle 1/4" away from the sewn seam.
- 2) Follow Figure 3 for the seam direction to add a 2-7/8" Fabric C square to each of the remaining corners of the 6-1/2" Fabric A square to make one Monkey Block.
- 3) Repeat Steps 1 and 2 to make eighteen Monkey Blocks.
- 4) Starting and ending with one 6-1/2" Monkey Block, sew together three Monkey blocks and two 6-1/2" Fabric B squares, alternating them, to make Row One. Repeat to make Rows Three, Five and Seven.
- 5) Starting and ending with one 6-1/2" Fabric B square, sew together three 6-1/2" Fabric B squares and two 6-1/2" Monkey Blocks to make Row Two. Repeat to make Rows Four and Six.
- 6) Starting with Row One at the top, sew the rows together in order ending with Row Seven to make the quilt top.
- 7) Sew one 1-1/2" x 42-1/2" Fabric D strip to each side of the quilt top. Sew one 1-1/2" x 32-1/2" Fabric D strip to the top and bottom of the quilt top.
- 8) Sew one 3-1/2" x 44-1/2" Fabric E strip to each side of the quilt top. Sew one 3-1/2" x 38-1/2" Fabric E strip to the top and bottom of the quilt top.
- 9) Layer, quilt and bind as desired.

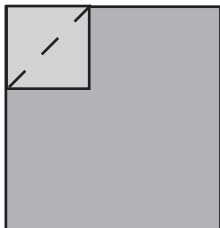


Fig. 1

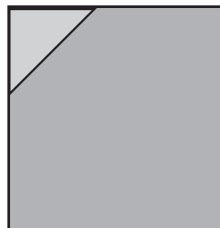


Fig. 2

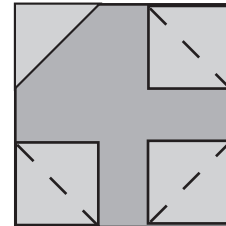


Fig. 3