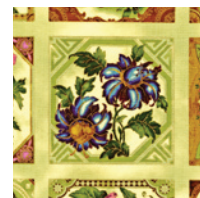


Garden Patch

Quilt designed by Karen Pharr

Botanica
by Judith Baker Montano

Approximate size: 54½" x 62½"



AJMM-8855-201
Jewel
1/2 yard



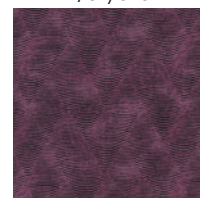
AJMM-8857-201
Jewel
1/4 yard



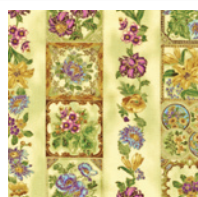
AJMM-8859-40
Emerald
1/3 yard



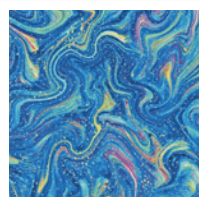
AJMM-8859-179
Rust
1/3 yard



AJMM-8859-97
Teal
1/3 yard



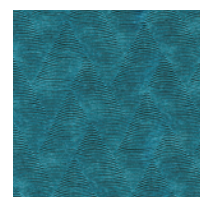
AJMM-8888-201
Jewel
3/4 yard



AJMM-8856-201
Jewel
3/4 yard



AJMM-8856-200
Vintage
3/4 yard



AJMM-8859-213
Teal
1-1/8 yard

Garden Path

Quilt design and instructions by Karen Pharr

Finished Quilt Size Approx. 54" x 62.5"

Fabric Requirements

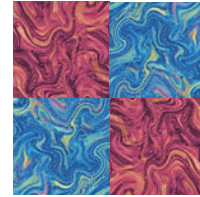
8855-201	1/2yd (large tile print)	
8857-201	1/4yd	
8859-40	1/3yd	
8859-179	1/3yd	
8859-97	1/3 yd	
8859-215	1/3yd	
8856-200	3/4yd	
8856-191	3/4yd	
Inner Border	8888-201	3/4yd (small tile stripe)
Outer Border	8857-201	1 1/2 yds
Binding	8859-215	3/4yd

Creating Your 4-Patch Blocks

From 8856-200 Vintage, rotary cut (30) 4 3/4" squares. From 8856-201 Jewel, rotary cut (30) 4 3/4" squares. These will create your four patch blocks.

Sew one 8856-200 Vintage and one 8856-201 Jewel together.

Continue until you create 60 pairs. Now make your 4-patches sewing two pairs together, opposing colors.



Creating Your Tile Block

From 8855-201, cut (15) 4 3/4" squares. (These are your tiles. Cut each tile with a 1/4" seam allowance. Your squares should measure 4 3/4"). From 8859-91 & 8859-213, cut (15) rectangles 4 3/4" x 2 5/8". From 8859-40 & 8859-179, cut (15) rectangles 6 7/8" x 2 5/8". From 8857-201, cut (30) squares 2 5/8" x 2 5/8".

Take each 8859-213 rectangle and sew an 8857-201 square to one end (this will become Unit 3).



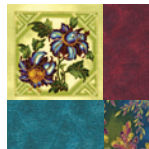
Take each 8859-179 rectangle and sew an 8857-201 square to one end (this will become Unit 5).



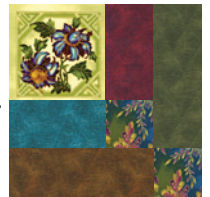
Sew Unit 1 (8855-201 - tile) to Unit 2 (8859-91) and press.



Sew Unit 3 to the bottom of block.



Now sew Unit 4 (8859-40) to the right side of block, and then add Unit 5 to the bottom of block. Continue until you have completed 15 blocks.



Now create your top alternating blocks starting with a tile block then 4-patch (each row will be 5 blocks wide) Start 2nd row with a 4-patch then tile block. Continue until you have made 6 rows. Sew each row together.

Adding Borders

Because of differences in seam allowances, each top may be slightly different in size. Measure the length of your top and cut 2 borders for the sides.

Borders will be cut from 8888-201 Jewel. Cut strips from the length of fabric, adding a 1/4" seam allowance to the tile rows. You will be able to cut from every other row of tiles. Sew border on each side of quilt and press seams toward the border.

Now measure the width of top, and cut 2 borders for the top and bottom of quilt. Sew borders to top and bottom, and press seams towards border.

Outer Border

Cut strips WOF x 4 3/4". Measure your top as above and add outer borders to your top. You will need to piece your WOF strips to make appropriate lengths for the size of your top.

Finish your top by quilting as desired and adding binding.