

EMPERESS BOUQUET

BY PEGGY TOOLE

Quilt designed by Peggy Toole

Intermediate Level
Finished Quilt Size 82.5" x 92"



Alternate border option: requires additional yardage, please see instructions



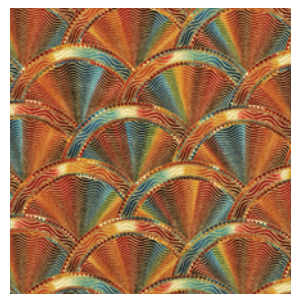
APTM-8430-183 Pewter



APTM-8428-201 Jewel



APTM-8427-201 Jewel



APTM-8429-201 Jewel



ESJ-6771-176 Bronze
Coordinating Fusions™

download more FREE patterns at:

www.robertkaufman.com
ROBERTKAUFMAN
F A B R I C S

EMPRESS BOUQUET

Quilt designed Peggy Toole

Quilt approximate size 82-1/2" x 92"

All border strip length measurements are approximate. Please measure your quilt top before cutting the length of each border.

Fabric Requirements

Fabric A: 4-1/2 yards of APTM-8430-183

Fabric B: 4-1/4 yards of APTM-8428-201

Fabric C: 2 yards of APTM-8429-201

Fabric D: 5 yards of APTM-8427-201

Fabric E: 1 yard of APL-8442-173

Backing: 8-1/2 yards of APTM-8427-201

Fusible Web: 10 yards

OPTIONAL- Template plastic

Cutting:

Cut sixty 6-1/2" squares. Cut eight 3-1/2" x width of fabric (WOF) strips. Piece the strips into two 3-1/2" x 72-1/2" strips and two 3-1/2" x 66-1/2" strips. Add a 1/4" seam allowance to Template 1 and cut forty-eight for the border.

See instructions to cut (120) triangles.

Add a 1/4" seam allowance to Template 2 and cut forty-four pieces with the fabric design on each piece going in the same direction. Add a 1/4" seam allowance to Template 3 and cut four pieces with the fabric design on each piece going in the same direction.

See instructions to fussy cut thirteen Stars and fifty-two Arches

Cut the entire piece into 2-1/2" strips cut on the 45° bias for the binding.

Cut and sew the backing into one 92" x 100" piece for the backing.

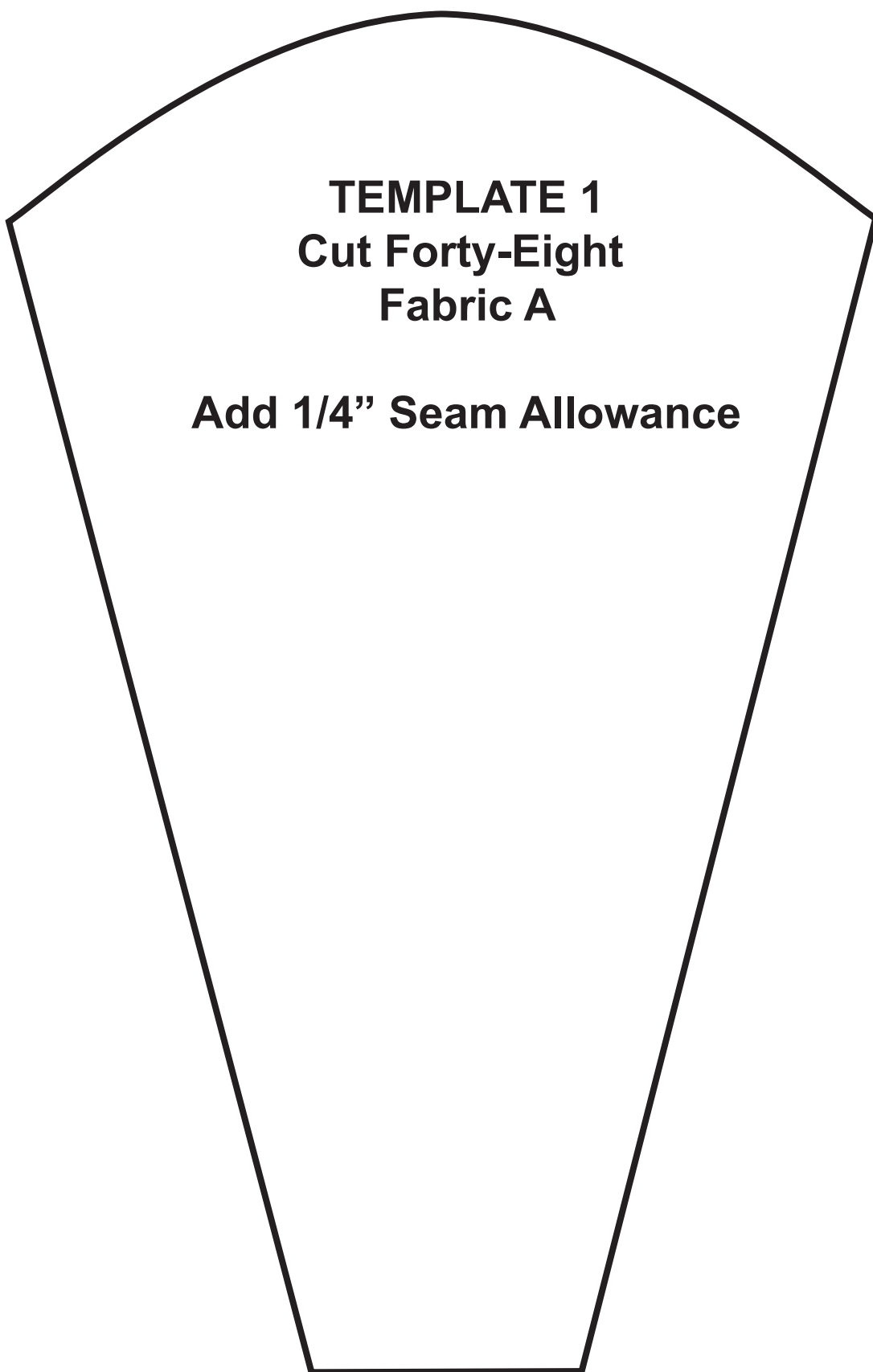
Assembly Instructions:

- 1) To cut the triangles from Fabric B, cut a 7-1/4" square from a piece of paper or template plastic. Cut the square in half across one diagonal. Use one of the paper triangles as a template to cut the fabric triangles from the length of fabric. The lines on the fabric should run horizontal across the triangle. Cut (120) triangles.
- 2) Place two Fabric B triangles, right sides together. Sew across the long bottom edge. Open and press to make one Fabric B half-square triangle. Repeat to make sixty Fabric B half-square triangles. Trim the half-square triangles to measure 6-1/2" squares.
- 3) To cut the appliques for the quilt, follow the manufacturer's instructions and press fusible web onto the back side of Fabric D.
- 4) Refer to the photo as a guide and mark the thirteen Stars you will need, with a pin. Repeat to mark thirteen circles you need to cut out for the arches. Note: Carefully cut out the Stars, leaving as much length on each star point as possible to trim later and the Circles.
- 5) Using Template 4, fussy cut each circle into four arches. You will need fifty-two arches.
- 6) Refer to the quilt photo and press twenty arches onto twenty Fabric B half-square triangles from Step 1. Finish the raw edges with a decorative stitch such as a satin or buttonhole stitch.
- 7) Refer to the quilt photo and press thirty-two arches onto the 6-1/2" Fabric A squares. Finish the raw edges of the applique with a decorative stitch.
- 8) Refer to the quilt photo to sew the 6-1/2" Fabric B half-square triangles and 6-1/2" Fabric A squares into twelve rows of ten blocks. Sew the rows together to make the quilt top.
- 9) Refer to the quilt photo to press the thirteen stars onto the quilt top. Trim the star points as needed to fit. Finish the raw edges with a decorative stitch.
- 10) Sew one 3-1/2" x 72-1/2" Fabric A strip to each side of the quilt top. Sew one 3-1/2" x 66-1/2" Fabric A strip to the top and bottom of the quilt top.
- 11) Starting and ending with one Fabric A Template 1 piece, sew together thirteen Fabric A Template 1 pieces and twelve Fabric C Template 2 pieces, alternating them as shown in the quilt photo to make one side border. Repeat to make a second side border. Sew the borders to the quilt top.
- 12) Starting and ending with one Fabric A Template 1 piece, sew together eleven Fabric A Template 1 pieces and ten Fabric C Template 2 pieces, alternating them as shown in the quilt photo to make the top border. Repeat to make the bottom border. Sew one Fabric C Template 3 piece to each end of the borders as shown in the quilt photo. Sew the borders to the quilt top.
- 13) Layer and quilt as desired.
- 14) Bind as desired using the 2-1/2" Fabric E Bias strips.

TEMPLATE 4-

Cut fifty-two Arches-No Seam Allowance needed

Empress Bouquet Templates



Empress Bouquet Templates

TEMPLATE 3

**Cut Four
Fabric C**

Add 1/4" Seam Allowance

TEMPLATE 2

**Cut Forty-Four
Fabric C**

Add 1/4" Seam Allowance