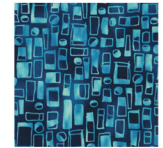


# Color Theory

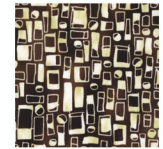
Sandra  
by: Bahava

Quilt designed by Margrit Hall

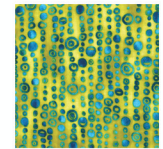
Quilt Size: 50" x 62"  
Advanced Beginner Level



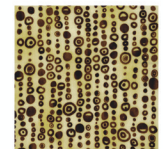
ASB-6879-215  
Surf



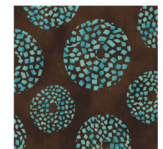
ASB-6879-169  
Earth



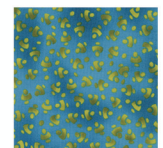
ASB-6880-215  
Surf



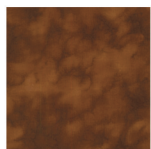
ASB-6880-169  
Earth



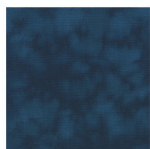
ASB-6881-215  
Surf



ASB-6882-215  
Surf



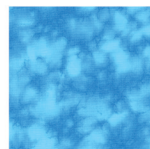
\*DRJ-6110-169  
Earth



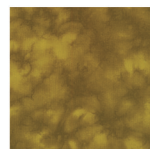
\*DRJ-6110-78  
Peacock



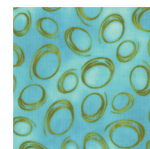
\*DRJ-6110-15  
Ivory



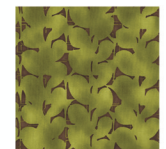
\*DRJ-6110-216  
Cloud



\*DRJ-6110-30  
Fern



ASB-6884-215  
Surf



ASB-6883-215  
Surf

\*coordinating style:



DRJ-6110

download this pattern FREE online at:

**ROBERTKAUFMAN**  
F A B R I C S




www.robertkaufman.com

# Geometric Color Theory

Geometric Color  
Theory  
Template A

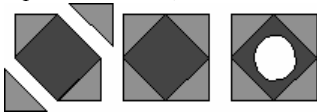
Quilt Designed By: Margrit Hall  
Quilt: 50" x 62"  
Finished Block: 12" x 12"

All Seams are 1/4" – All strips are cut the width of the fabric (carefully trim all selvages) – Please read the entire pattern carefully before you begin.

Fabric #	Fabric Color	Yardage	Cutting Directions
1	ASB-6884-215 Surf	5/8 yd.	Cut 2 strips 6-7/8" wide. Cut into 12 squares 6-7/8" x 6-7/8". Cut once across the diagonal.  Cut 2 strips 2-1/2" wide.
2	ASB-6880-169 Earth	5/8 yd.	Cut 2 strips 6-7/8" wide. Cut into 12 squares 6-7/8" x 6-7/8". Cut once across the diagonal. <b>Hint:</b> For directional fabric cut 6 squares from top right to bottom left and 6 from top left to bottom right. Keep groups separate placing them in separate labeled baggies. Cut squares one at a time or if stacking insure that all fabric is right side up.  Directional Group 1 Cut 6  Directional Group 2 Cut 6 Cut 2 strips 2-1/2" wide.
3	ASB-6879-215 Surf	1/2 yd.	Cut 3 strips 2-1/2" wide. Following the manufacturer's instructions, iron fusible webbing to the back of the remaining piece of fabric. Cut 2 Template A circles. If doing turn under appliqué, draw 2 Template A circles on the back side of the fabric and cut approximately 3/8" (does not have to be perfect) away from the pencil line. See instructions for easy appliqué circles.
4	ASB-6879-169 Earth	1/2 yd.	Cut as instructed for fabric 3.
5	ASB-6881-215 Surf	1/2 yd.	Cut as instructed for fabric 3.
6	ASB-6883-215 Surf	1/2 yd.	Cut as instructed for fabric 3.
7	ASB-6882-215 Surf	1/2 yd.	Cut as instructed for fabric 3.
8	ASB-6880-215 Surf	1/2 yd.	Cut as instructed for fabric 3.
9	DRJ-6110-169 Earth	3/4 yd.	Cut 1 strip 9" wide. Cut into 3 squares 9" x 9". Cut 6 strips 2-1/4" wide for binding.
10	DRJ-6110-216 Cloud	3/8 yd.	Cut 1 strip 9" wide. Cut into 4 squares 9" x 9".
11	DRJ-6110-30 Fern	3/8 yd.	Cut 1 strip 9" wide. Cut into 2 squares 9" x 9".
12	DRJ-6119-15 Ivory	3/8 yd.	Cut 1 strip 9" wide. Cut into 3 squares 9" x 9".
13	DRJ-6110-78 Peacock	3/8 yd.	Cut 5 strips 1-1/2" wide for the 1st border.
Back		3-3/8 yds.	

## Block A Construction (Use the photo for color placement)

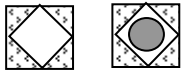
Sew a 3-7/8" fabric 1 triangle to opposite sides of a 9" square. Sew a 3-7/8" fabric 2 triangle to the 2 remaining sides of the square. Appliqué a circle to the center of each block. (see easy circle appliqué instructions)



Block A  
Make 6

## Block B Construction (Use the photo for color placement)

Sew a 3-7/8" fabric 2, group 1 triangle to the top left and bottom right sides of a 9" square. (make sure the directional design is running vertically) Sew a 3-7/8" fabric 1, group 2 triangle to the top right and bottom left sides of the square. Appliqué a circle to the center of each block. (see easy circle appliqué instructions)

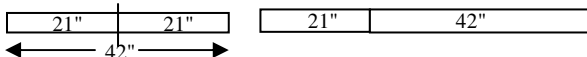


Block B  
Make 6

Using the photo for a guide, layout blocks in 4 rows of 3 blocks each. Sew blocks in rows first, and then sew rows together.

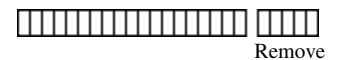
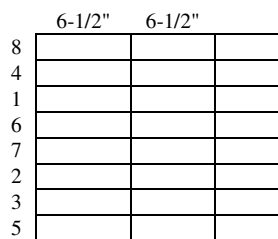
## 1st Border (If your measurements are different, use your measurements)

Cut 2 of the 1-1/2" wide fabric 13 strips down to measure 1-1/2" x 36-1/2", and sew to the top and bottom of the quilt. Cut 1 of the 1-1/2" x 42" strips in half to make 2 strips 1-1/2" x 21". Sew a 1-1/2" x 21" strip end-to-end to a 1-1/2" x 42" strip. Make 2. Cut down to measure 50-1/2". Sew to the sides of the quilt.



## 2nd Border

Sew the 2-1/2" wide strips of fabrics 1 - 8 together lengthwise in the sequence shown below. Make 3 sets. Cut into 14 segments 6-1/2" long. Sew 3 segments together to make a border unit. Make 2 border units. Remove the last 5 strips from the end of each border unit. Sew to the top and bottom of the quilt.



Sew 4 segments together to make a side border unit. Make 2 units. Sew the ends of a side border unit together to make a tube. Make 2 tubes. Take out the seam between fabrics 7 and 2. Remove the fabric 2 strip. Using the photo for placement, sew to the sides of the quilt.

**Tip:** If the border unit is too long or too short, adjust seam allowances slightly in equal increments across the border unit until length is correct.

**Easy Appliqué Circles:** To make appliqué circles, cut a lightweight cardboard template to the actual size. Lay the template on the wrong side of the fabric and draw around it. Cut 3/8" away from the drawn line. Sew a running stitch 1/8" away from the line. Replace the template, and pull the running stitch to gather the fabric around the template. Spray with spray starch, press and carefully remove the template.

