

# WILDLIFE VIEWS

Designed by Elise Lea for RK  
[www.robertkaufman.com](http://www.robertkaufman.com)

Featuring **Midnight  
Nectar**



Finished quilt measures: 61" x 70"

Difficulty Rating: **Beginner**

**ROBERT KAUFMAN**  
F A B R I C S

For questions about this pattern, please email [Patterns@RobertKaufman.com](mailto:Patterns@RobertKaufman.com).




## Fabric and Supplies Needed

*Fabric amounts based on yardage that is 42" wide.*

Color	Fabric	Name/SKU	Yardage	Color	Fabric	Name/SKU	Yardage
	A	K001-1387 WHITE	1-1/4 yard		I	SRKM-21184-17 IRIS	fat eighth
	B	SRKM-21185-14 NATURAL	fat eighth		J	SRKM-21183-181 ONYX	fat eighth
	C	SRKM-21184-19 ORCHID	fat eighth		K	SRKM-21186-184 CHARCOAL	fat eighth
	D	SRKM-21188-108 FUCHSIA	fat eighth		L	SRKM-21189-107 PETAL	1/4 yard
	E	SRKM-21184-106 BLOSSOM	1/4 yard		M	SRKM-21187-301 AZALEA	1/4 yard
	F	SRKM-21186-228 LAPIS	1/4 yard		N	SRKM-21187-333 SEA GLASS	1/4 yard
	G	SRKM-21185-63 SKY	1-1/4 yard		O	SRKM-21189-73 LAKE	1/4 yard
	H	SRKM-21183-9 NAVY	1/4 yard		P	SRKM-21189-32 MINT	1/4 yard

Fabric amounts based on yardage that is 42" wide.

Color	Fabric	Name/SKU	Yardage	Color	Fabric	Name/SKU	Yardage
	Q	SRKM-21187-420 CLOVER	1/2 yard		Binding*	SRKM-21187-420 CLOVER <small>*Also used for Fabric Q</small>	5/8 yard
Copyright 2022, Robert Kaufman For individual use only - Not for resale				You will also need: 4 yards for backing			

## Notes Before You Begin

- Read through all of the instructions before beginning.
- All of the seam allowances are 1/4" unless otherwise noted.
- Press seam allowances open unless otherwise noted.
- Width of fabric (WOF) is equal to at least 42" wide.
- Right sides together has been abbreviated to RST.
- Remember to measure twice and cut once!

## Cutting Instructions

### From Fabric A, cut:

six 2-1/2" x WOF strips. Sew together, end-to-end, then trim:  
 two 2-1/2" x 51-1/2" top/bottom Border 3 strips  
 two 2-1/2" x 56-1/2" side Border 3 strips  
 seventeen 1-1/2" x WOF strips. Sew ten strips together, end-to-end, then trim:  
 two 1-1/2" x 46-1/2" top/bottom Border 1 strips  
 two 1-1/2" x 54-1/2" side Border 1 strips  
 four 1-1/2" x 53-1/2" column sashing strips  
 From the remaining seven strips, cut:  
 twenty-five 1-1/2" x 8-1/2" block sashing strips

### From each of Fabrics Fabric B and K, cut:

one 6-1/2" square for the block centers

### From each of Fabrics C and J, cut:

one 6-1/2" x WOF strip. Subcut:  
 two 6-1/2" squares for the block centers

### From each of Fabrics D and I, cut:

one 6-1/2" x WOF strip. Subcut:  
 three 6-1/2" squares for the block centers

**From each of Fabrics E and H, cut:**

one 6-1/2" x WOF strip. Subcut:

four 6-1/2" squares for the block centers

**From Fabric F, cut:**

one 6-1/2" x WOF strip. Subcut:

five 6-1/2" squares for the block centers

**From Fabric G, cut:**

one 6-1/2" x WOF strip. Subcut:

five 6-1/2" squares for the block centers

six 5-1/2" x *length of fabric* strips. Sew together, end-to-end, then trim:

two 5-1/2" x 61-1/2" top/bottom Border 4 strips

two 5-1/2" x 60-1/2" side Border 4 strips

**From each of Fabrics L-P, cut:**

one 2" x WOF strip. Subcut:

ten 2" squares for the block border HSTs

four 1-1/2" x WOF strips. Subcut:

ten 1-1/2" x 6-1/2" rectangles for the block borders

ten 1-1/2" x 7-1/2" rectangles for the block borders

**From Fabric Q, cut**

one 2" x WOF strip. Subcut:

ten 2" squares for the block border HSTs

four 1-1/2" x WOF strips. Subcut:

ten 1-1/2" x 6-1/2" rectangles for the block borders

ten 1-1/2" x 7-1/2" rectangles for the block borders

five 1" x WOF strips. Sew together, end-to-end, then trim:

two 1" x 47-1/2" top/bottom Border 2 strips

two 1" x 55-1/2" side Border 2 strips

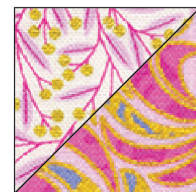
**From the Binding Fabric, cut:**

seven 2-1/2" x WOF strips

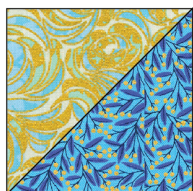


## Assemble the Half-Square Triangles

**Step 1:** Pair a 2" Fabric L square with a 2" Fabric M square, RST. Mark a diagonal line on the wrong side of one square. Sew  $\frac{1}{4}$ " away from both sides of the marked line. Cut on the marked line, creating two half-square triangles (HSTs). Press toward the darker fabric. Trim to  $1\frac{1}{2}$ " square. Repeat to make twenty L/M HSTs.



**Step 2:** Repeat Step 1 to make:



twenty N/O HSTs



twenty P/Q HSTs

## Assemble the Blocks



**Step 3:** Gather:

one  $6\frac{1}{2}$ " Fabric B square

two L/M HSTs

one  $1\frac{1}{2}$ " x  $6\frac{1}{2}$ " Fabric L strip

one  $1\frac{1}{2}$ " x  $7\frac{1}{2}$ " Fabric L strip

one  $1\frac{1}{2}$ " x  $6\frac{1}{2}$ " Fabric M strip

one  $1\frac{1}{2}$ " x  $7\frac{1}{2}$ " Fabric M strip

Arrange the units into three rows, as shown. Note the fabric placement and block orientation in the Block Assembly Diagram.

**Step 4:** Sew the units together to form the rows. Press the seams toward the  $1\frac{1}{2}$ " strips.

**Step 5:** Sew the rows together, nesting the seams and pressing the seams to one side to form the block.

The resulting block should measure  $8\frac{1}{2}$ " square.

**Step 6:** Repeat Steps 3-5 to make the remaining twenty-nine blocks. Refer to the Quilt Assembly Diagram for fabric pairings.



## Assemble the Quilt



**Step 7:** Arrange the Blocks together in columns as indicated in the Quilt Assembly Diagram. Sew each column together, using block sashing strips between each block. Press seams toward the sashing. Repeat to make five block columns.

**Step 8:** Sew the 1-1/2" x 53-1/2" sashing and block columns together. Press seams open or to the sashing.

**Step 9:** Sew the side Border 1 strips to the sides of the quilt center. Press toward the borders. Sew the top and bottom Border 1 strips to the quilt center. Press toward the borders.

**Step 10:** Sew the side Border 2 strips to the sides of the quilt center. Press toward the borders. Sew the top and bottom Border 2 strips to the quilt center. Press toward the borders.

**Step 11:** Sew the side Border 3 strips to the sides of the quilt center. Press toward the borders. Sew the top and bottom Border 3 strips to the quilt center. Press toward the borders.

**Step 12:** Sew the side Border 4 strips to the sides of the quilt center. Press toward the borders. Sew the top and bottom Border 4 strips to the quilt center. Press toward the borders.

Your quilt top is complete! Baste, quilt, bind and enjoy!

This pattern may be used for personal purposes only and may not be reproduced in any form without the express permission from Robert Kaufman Fabrics. This pattern is not for resale. All patterns, unless otherwise attributed, are © Robert Kaufman Co., Inc. 2005-2022. All rights reserved.