

Jungle Junction

designed by Toadusew Creative Concepts for Robert Kaufman Fabrics
Bright colorstory

featuring

WILD FRIENDS

lesley grainger designs



57" x 65"



ROBERT KAUFMAN
F A B R I C S
www.robertkaufman.com

Pattern available to download free from
Robert Kaufman Fabrics.

Jungle Junction

designed by Toadusew Creative Concepts for Robert Kaufman Fabrics
Earth colorstory

featuring

WILD FRIENDS

lesley-granger designs



57" x 65"



ROBERT KAUFMAN
F A B R I C S
www.robertkaufman.com

Pattern available to download free from
Robert Kaufman Fabrics.

"Jungle Junction"

by  toadusew

Fabric Requirements

This quilt was inspired and made using the "Wild Friends" collection from Robert Kaufman.

- Color 1** • 1 ¼ yard *alphabet print*
- Color 2** • ½ yard *solid color*
- Color 3** • ¾ yard *small polka dots*
- Color 4** • 1 yard *stripe*
- Color 5** • ¼ yard *animal print*
- Panel** • 1 Wild Friends Panel
- Backing** • 3 ½ yards
- Batting** • 72" x 90"* Fairfield Bamboo
*trimmed to 61" x 72" (actual size plus 4 inches)

General Instructions

- This pattern is suitable for quilters of all levels
- WOF = width of fabric, selvage to selvage
- HST = half square triangle
- RST = right sides together
- All seams are sewn RST using a ¼" seam
- Press as indicated by arrows in each step

Cutting Instructions

From Color 1 Cut:

- 5 strips 3 ¾" x WOF (*border 1*)
- 7 strips 2 ½" x WOF (*binding*)

From Color 2 Cut:

- 3 strips 4 ⅞" x WOF
- 22 squares 4 ⅞" (*border 2*)

From Color 3 Cut:

- 3 strips 4 ⅞" x WOF
- 22 squares 4 ⅞" (*border 2*)
- 4 squares 4 ½" (*cornerstones border 2*)

From Color 4 Cut:

- 6 strips 4 ½" x WOF (*border 3*)

From Color 5 Cut:

- 4 squares 4 ½" (*cornerstones border 3*)

Wild Friends Panel: Trim to 34" x 42"



toadtip

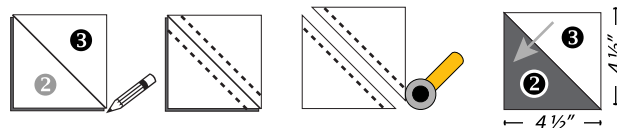
Checking for a Quarter Inch

Carefully cut 3 strips so they measure 1 ½" x 5". Adjust the machine for ¼" seam. Sew the strips together along the 5" edge. Press strips in either direction.

The sewn piece should now measure 1 ½" x 3".

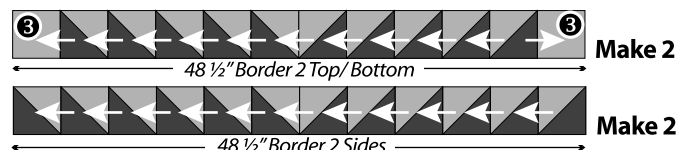
If it does not, adjust the machine accordingly and re-test until the desired result is achieved.

- ① Make the HST units for Border 2 by layering a 4 ⅞" color 3 square over a 4 ⅞" square color 2. Mark the color 3 square from corner to corner. Sew a scant ¼" seam on either side of the marked line. Cut the square in half along the marked line. Press as directed by arrows.



Make 44

- ② Join the half square triangles made in the previous step and 4 ½" color 3 squares into rows as illustrated.



- ③ Trim the panel to 34" x 42" before assembling the quilt. Assemble the quilt as illustrated, sewing the strips together, end to end if required to achieve the necessary length. Begin assembling the quilt by sewing the sides of Border 1 to the sides of the panel. For a perfectly square quilt and best results, mark the center points on the panel and borders and pin, RST, at this point. Match up ends and add additional pins as needed to distribute the fabric evenly. Sew and press as indicated. Next add the top and bottom borders using the same marking and pinning method. Sew and press as indicated. Add the remaining borders, starting with the sides first, following the same steps. *Finished size approximately size 57" x 65"*

