

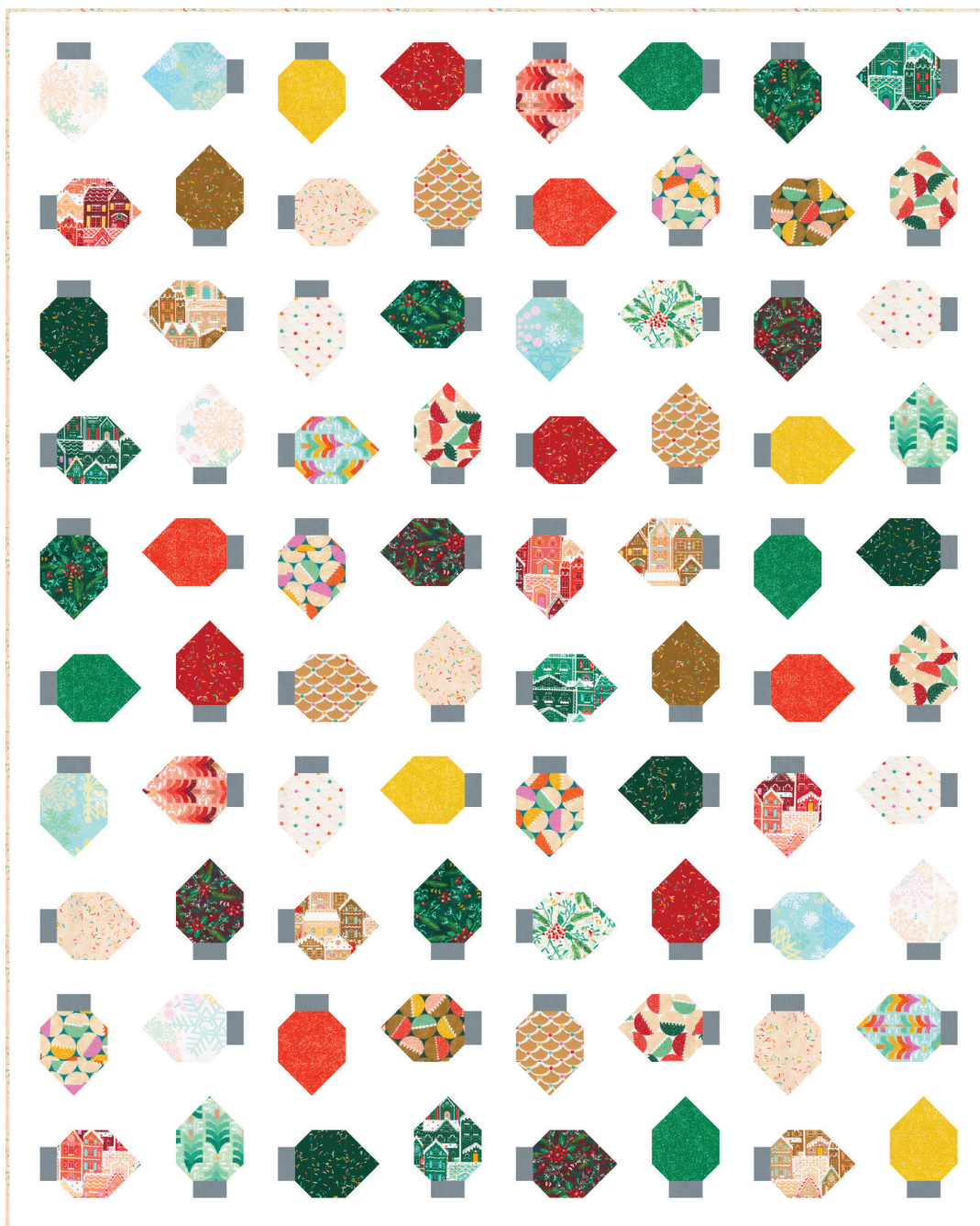
TWINKLE LIGHTS

Designed by Ariga Wilson for RK
www.robertkaufman.com

Featuring *Wishwell*

Tinsel Town

Vanessa Lillrose & Linda Fitch



Finished quilt measures: 58" x 72"





Difficulty Rating: **Intermediate**

ROBERT KAUFMAN
F A B R I C S

For questions about this pattern, please email Patterns@RobertKaufman.com.

Fabric and Supplies Needed

Fabric amounts based on yardage that is 42" wide.

Color	Fabric	Name/SKU	Yardage	Color	Fabric	Name/SKU	Yardage
		TEN-1079-42 TINSEL TOWN	One Ten Square Pack		B	K001-1854 SHARK	1/4 yard
	A	K001-1387 WHITE	3-1/2 yards		Binding	WELD-21018-467 SUGAR	1/2 yard
Copyright 2022, Robert Kaufman For individual use only - Not for resale				You will also need: 3-2/3 yards for backing			

Notes Before You Begin

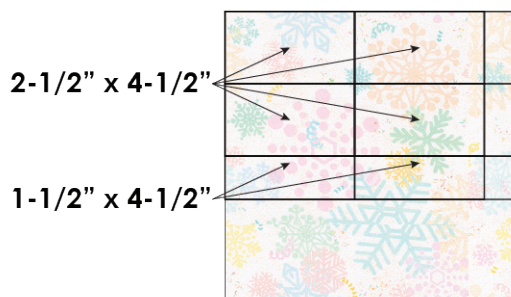
- Read through all of the instructions before beginning.
- All of the seam allowances are 1/4" unless otherwise noted.
- Press seam allowances open unless otherwise noted.
- Width of fabric (WOF) is equal to at least 42" wide.
- Right sides together has been abbreviated to RST.
- Remember to measure twice and cut once!

Cutting Instructions

From each of forty 10" squares, cut:

four 2-1/2" x 4-1/2" rectangles

two 1-1/2" x 4-1/2" rectangles



From Fabric A, cut:

forty-one 2-1/2" x WOF strips. Subcut:

eighty 2-1/2" x 6-1/2" rectangles

fifteen 2-1/2" x 12-1/2" block sashing strips

one hundred sixty 2-1/2" squares. Mark a diagonal line on the back of each square.

Sew the remaining fifteen strips together, end-to-end, then trim:

four 2-1/2" x 54-1/2" row sashing strips

two 2-1/2" x 68-1/2" side outer borders

two 2-1/2" x 58-1/2" top/bottom outer borders

twelve 1-1/2" x WOF strips. Subcut:

one hundred sixty 1-1/2" squares. Mark a diagonal line on the back of each square.

Set the remaining six strips aside for strip piecing.

From Fabric B, cut:

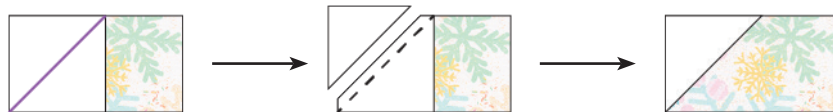
three 2-1/2" x WOF strips. Set aside for strip piecing.

From the Binding, cut:

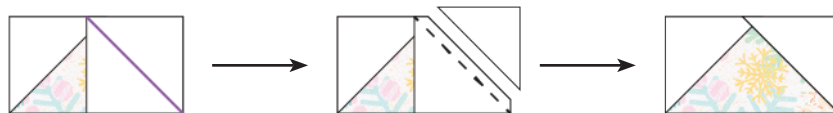
seven 2-1/2" x WOF strips.

Assemble the Light Blocks

Step 1: Place a 2-1/2" Fabric A square RST at one end of a 2-1/2" x 4-1/2" print rectangle. Sew on the marked line and trim away the excess fabric, leaving a 1/4" seam allowance. Press toward the triangle.



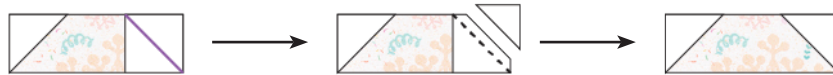
Step 2: Repeat Step 1 at the remaining end of the rectangle. The resulting flying geese unit should measure 2-1/2" x 4-1/2".



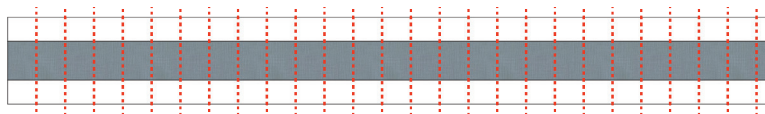
Step 3: Place a 1-1/2" Fabric A square RST at one end of a 1-1/2" x 4-1/2" matching print rectangle. Sew on the marked line and trim away the excess fabric, leaving a 1/4" seam allowance. Press toward the triangle.



Step 4: Repeat Step 3 at the remaining end of the rectangle. The resulting unit should measure 1-1/2" x 4-1/2".



Step 5: Sew a Fabric A strip to either long edge of a Fabric B strip. Press toward Fabric B. Repeat to make three strip sets like this. Subcut the strip sets into a total of eighty 1-1/2" x 4-1/2" units.



Step 6: Gather:



one completed Step 5 unit



the completed Step 2 unit



the completed Step 4 unit



a matching 2-1/2" x 4-1/2" print rectangle

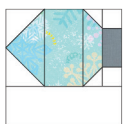
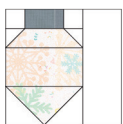
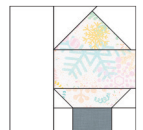
Arrange the units to form the lightbulb unit. Note the fabric placement and block orientation in the Assembly Diagram.

Step 7: Sew the units together to form the lightbulb. Press the seams in one direction. The resulting unit should measure 4-1/2" x 6-1/2".



Step 8: Repeat Steps 1-4 and 6-7 to make a total of eighty lightbulb units.

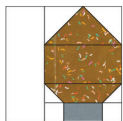
Step 9: Sew a 2-1/2" x 6-1/2" Fabric A rectangle to the left edge of each lightbulb unit. Press.



Step 10: Gather:

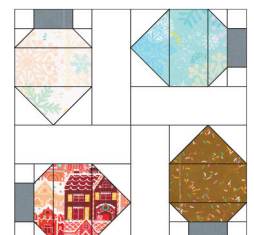
four assorted lightbulb units, in a variety of prints of our choosing

Arrange the units into two rows of two. Note the fabric placement and block orientation in the Block Assembly Diagram.

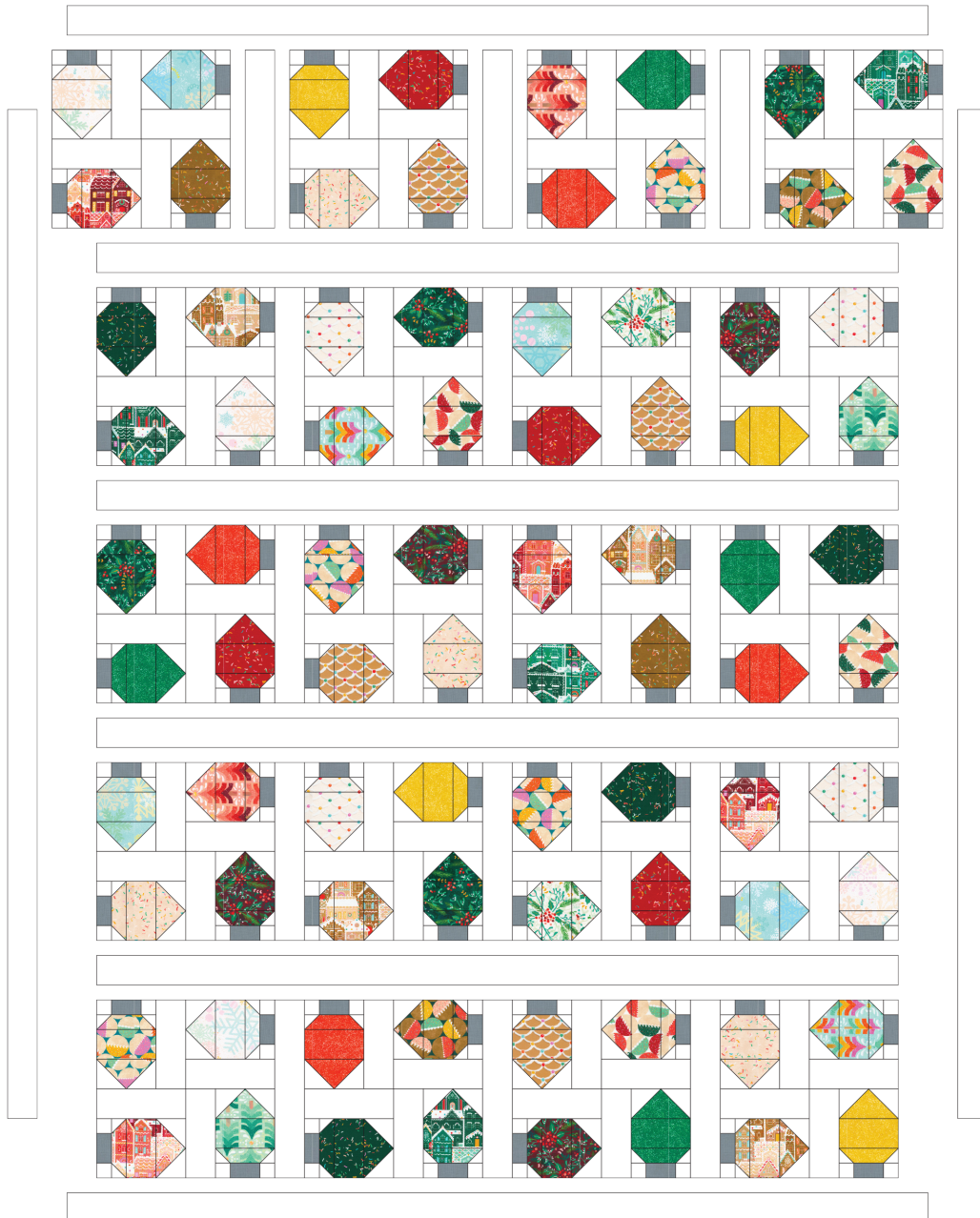


Step 11: Sew the units together to form the rows. Press the seams in opposite directions every other row.

Step 12: Sew the rows together, nesting the seams and pressing the seams to one side to form the block. Each Block should measure 12-1/2" square. Repeat to make a total of twenty Blocks.



Assemble the Quilt



Step 13: Arrange the Blocks together as indicated in the Quilt Assembly Diagram. Sew each row together, using sashing strips between each block. Press seams toward the sashing. Repeat to make five block rows.

Step 14: Sew the row sashing and block rows together. Press seams open or to the sashing.

Step 15: Sew the side outer borders to the sides of the quilt center. Press toward the borders. Sew the top and bottom outer borders to the quilt center. Press toward the borders.

Your quilt top is complete. Baste, quilt, bind and enjoy!

This pattern may be used for personal purposes only and may not be reproduced in any form without the express permission from Robert Kaufman Fabrics. This pattern is not for resale. All patterns, unless otherwise attributed, are © Robert Kaufman Co., Inc. 2005-2022. All rights reserved.