

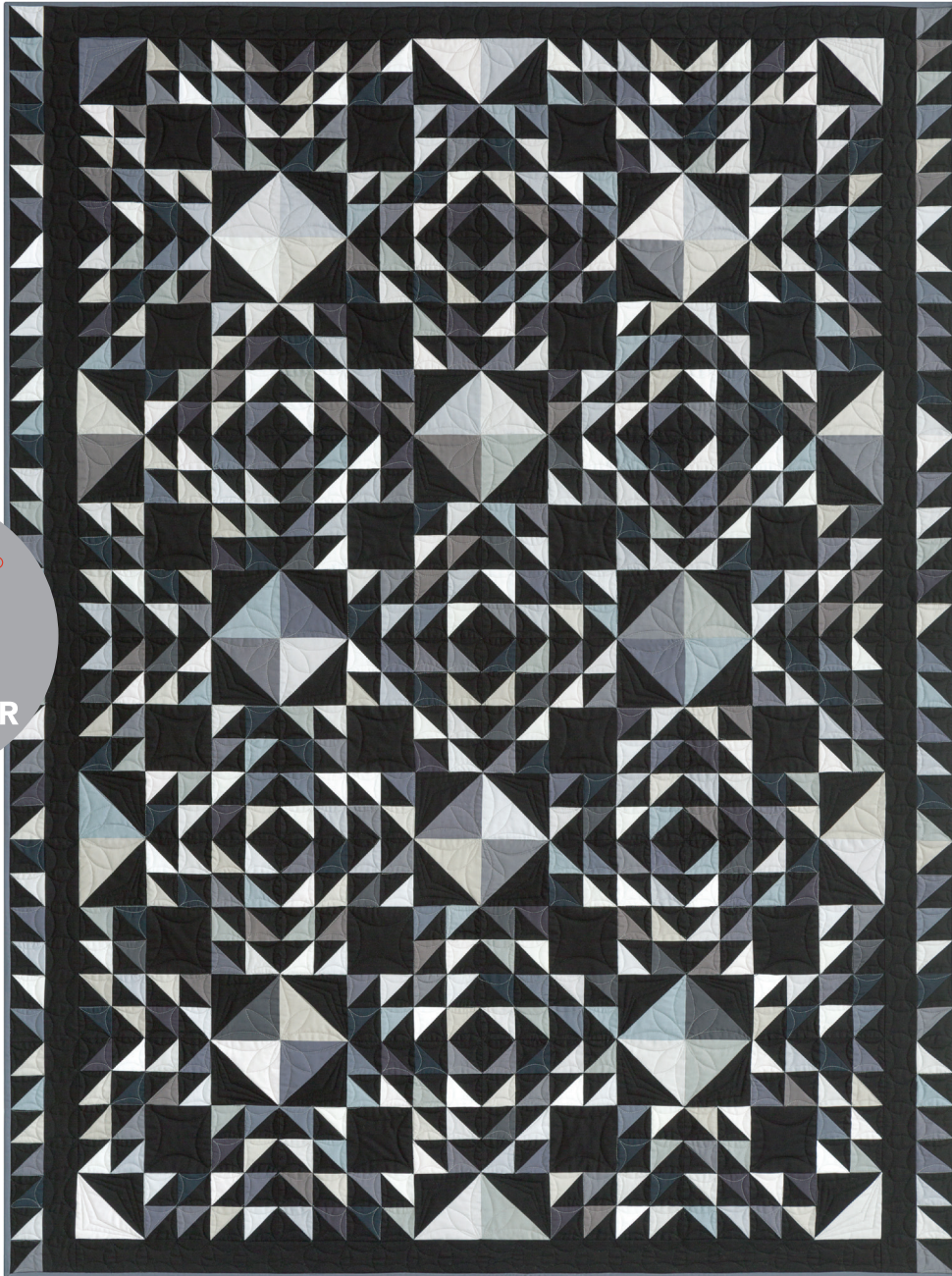
# TUTTI FRUTTI

Designed by Darlene Zimmerman

Featuring

**KONA**<sup>®</sup>  
cotton solids

2024  
**KONA**<sup>®</sup>  
cotton solids  
**365**  
CALENDAR  
QUILT



Finished quilt measures: 56" x 76"

Difficulty Rating: **Intermediate**

**ROBERT KAUFMAN**  
F A B R I C S

For questions about this pattern, please email [Patterns@RobertKaufman.com](mailto:Patterns@RobertKaufman.com).

## Fabric and Supplies Needed

*Fabric amounts based on yardage that is 42" wide.*

Color	Fabric	Name/SKU	Yardage	Color	Fabric	Name/SKU	Yardage
	A	K001-1019 BLACK	3-1/4 yards		J	K001-856 QUICKSILVER	1/2 yard
	B	K001-1071 CHARCOAL	1/2 yard		K	K001-1847 LIGHTHOUSE	1/2 yard
	C	K001-359 PEPPER	1/2 yard		L	K001-1007 ASH	1/2 yard
	D	K001-862 GOTHAM GREY	1/2 yard		M	K001-457 SHADOW	1/2 yard
	E	K001-106 METAL	1/2 yard		N	K001-1333 SILVER	1/2 yard
	F	K001-91 STEEL	1/2 yard		O	K001-839 DOVE	1/2 yard
	G	K001-500 TITANIUM	1/2 yard		P	K001-1387 WHITE	1/2 yard
	H	K001-854 OVERCAST	1/2 yard		Binding*	K001-106 METAL	5/8 yard
	I	K001-408 IRON	1/2 yard	<p><i>*Also used for Fabric E</i></p> <div style="background-color: #cccccc; padding: 5px; text-align: center;">                     You will also need:                      4 yards for backing                 </div> <p>Copyright 2023, Robert Kaufman                      For individual use only - Not for resale</p>			

## Notes Before You Begin

- Read through all of the instructions before beginning.
- All of the seam allowances are 1/4" unless otherwise noted.
- Press seam allowances open unless otherwise noted.
- Width of fabric (WOF) is equal to at least 42" wide.
- Right sides together has been abbreviated to RST.
- Remember to measure twice and cut once!

## Cutting Instructions

### From Fabric A, cut:

- three 5" x WOF strips. Subcut:
  - twenty-four 5" squares for HSTs.
- three 4-1/2" x WOF strips. Subcut:
  - twenty-four 4-1/2" squares.
- twenty-four 3" x WOF strips. Subcut:
  - three-hundred and twenty-six 3" squares for HSTs.
- six 2-1/2" x WOF strips. Set aside for the inner border.

### From each of Fabrics B-P, cut:

- one 5" x WOF (21") strip. Subcut:
  - one or two 5" squares for HSTs. Note: A total of twenty-four 5" squares are needed.
  - Trim the remainder of the strip to 3" and add it to the strips below.
- three 3" x WOF (21") strip. Subcut:
  - twenty-one or twenty-two 3" squares for HSTs.
  - Note: A total of three-hundred and twenty-four squares are needed.

### From the Binding Fabric, cut:

- seven 2-1/2" x WOF strips.

## Assemble the Half-Square Triangles (HSTs)

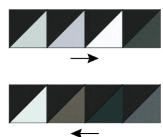
**Step 1** Pair a 5" Fabric A square with a 5" Fabric B square, RST. Mark a diagonal line on the wrong side of one square. Sew 1/4" away from both sides of the marked line. Cut on the marked line creating two half-square triangles (HSTs). Press toward the darker fabric. Trim to 4-1/2" square. Repeat to make a total of forty-eight HSTs using a Fabric A square paired with a Fabric B-P square.



**Step 2** Repeat Step 1 using 3" Fabric A squares each paired with 3" Fabric B-P squares. Trim each unit to 2-1/2" square. Repeat to make a total of six-hundred and forty-eight HSTs.

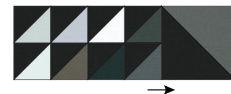


## Assembling the Blocks



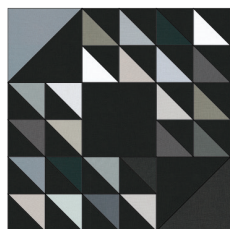
**Step 1** Assemble four 2-1/2" HSTs of random colors in a row as shown. Make a second row of four HSTs. Press the two rows in opposite directions. Join the two rows. Make forty-eight units. Press.

**Step 2** Sew a 4-1/2" HST on the end of the Step 1 unit. Press.



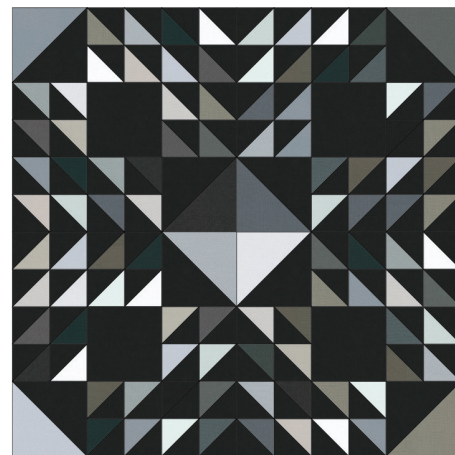
**Step 3** Assemble four 2-1/2" HSTs in random colors as shown. Press. Make forty-eight units.

**Step 4** Join the Step 3 units with a 4-1/2" Fabric A square. Press as shown. Make twenty-four.

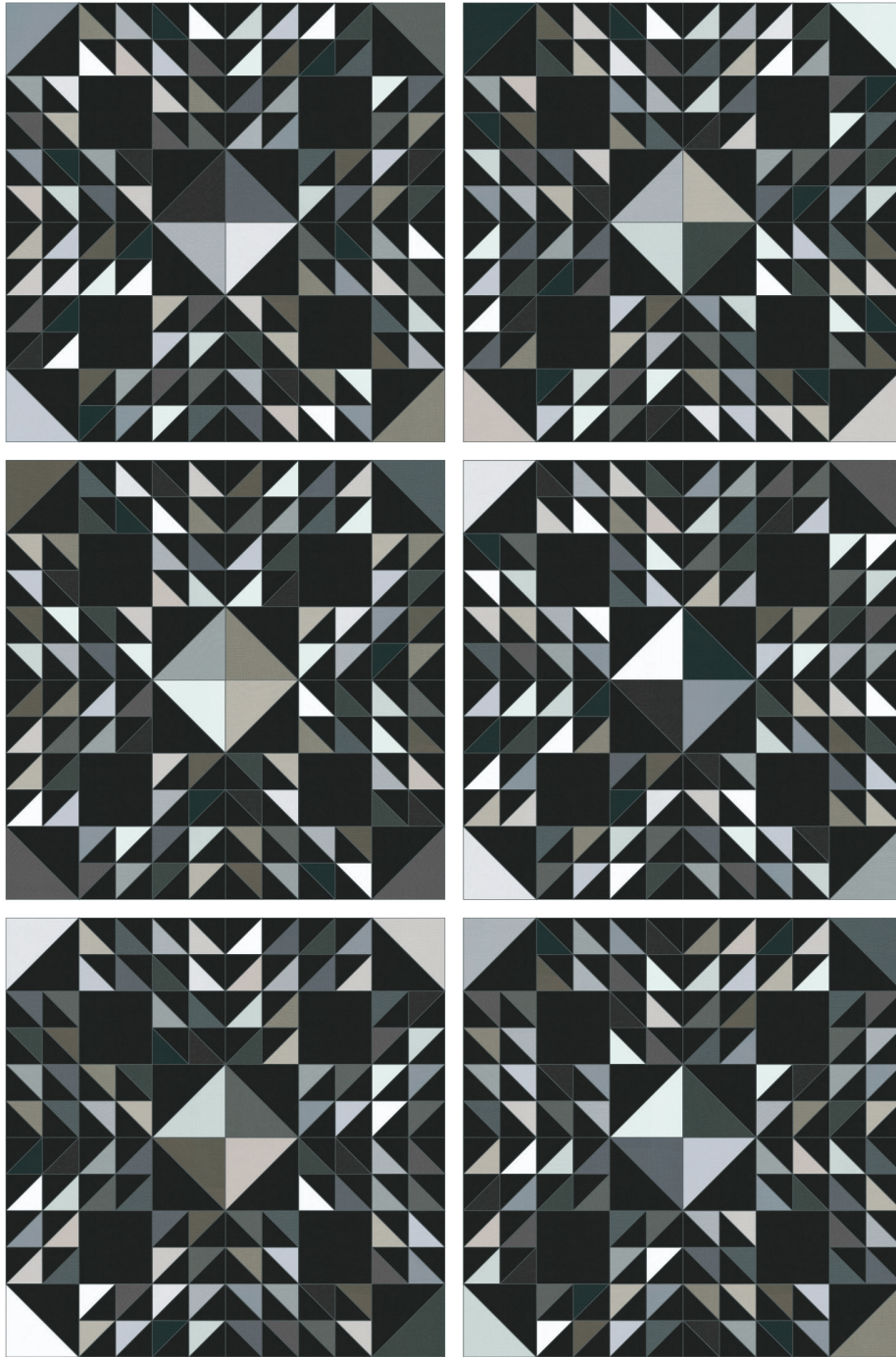


**Step 5** Sew the Step 2 and Step 4 units together to make a block. Press as shown. Make twenty-four blocks. At this point the blocks should measure 12-1/2" square.

**Step 6** Assemble four blocks from Step 5 into a larger block. Press the seams open. Make six large blocks.



## Assemble the Quilt Center and the Borders

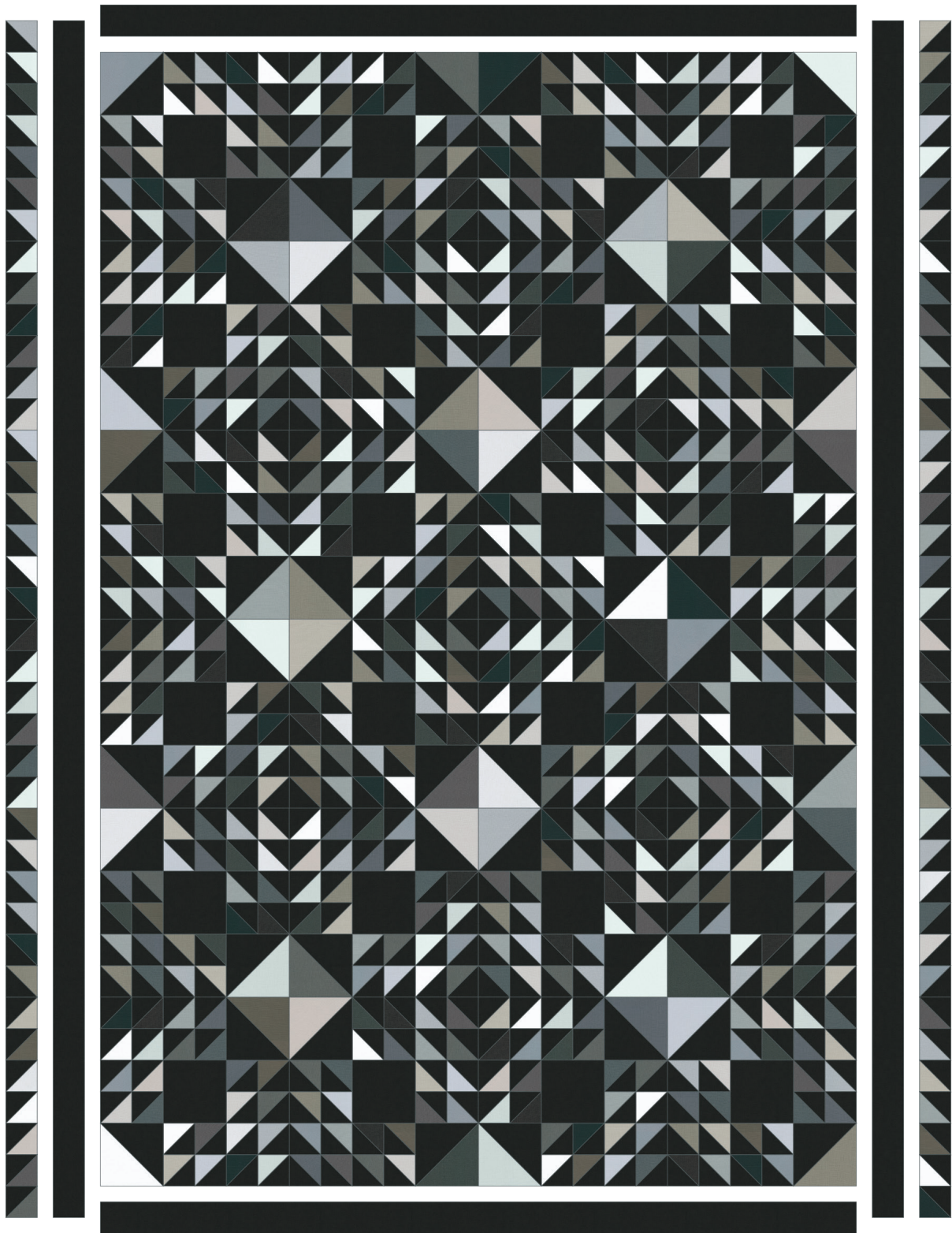


**Step 1** Join the large blocks in three rows of two blocks. Press the seams open.

**Step 2** Piece, measure and trim two Fabric A borders the width of the quilt. Sew to the top and bottom of the quilt. Repeat for the sides of the quilt. Press toward the borders.

**Step 3** Using thirty-six of the remaining 2-1/2" HSTs, sew together in sequences of six, following the photo of the quilt. Sew one additional HST to each end of the border.





Make two side pieced borders. Press, then sew to the sides of the quilt, matching the seams in the border to the seams in the quilt. Press toward the white borders.

Your quilt top is complete. Baste, quilt, bind and enjoy!

This pattern may be used for personal purposes only and may not be reproduced in any form without the express permission from Robert Kaufman Fabrics. This pattern is not for resale. All patterns, unless otherwise attributed, are © Robert Kaufman Co., Inc. 2005-2023. All rights reserved.