

# Travelogue Passport Wallet

Designed by Robert Kaufman Fabrics

Featuring

*dream vacation*




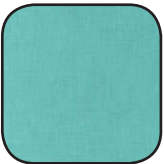


Finished project measures: 4" x 5"

Pattern Level: Confident Beginner

"I have basic block construction down  
and would like to learn a new trick!"

ROBERT KAUFMAN  
F A B R I C S

## Fabric and Supplies Needed

Color	Fabric	Name/SKU	Yardage	Color	Fabric	Name/SKU	Yardage
	A	AOR-14909-200 VINTAGE	1/4 yard		C	E014-1221 MED. AQUA	1/4 yard
	B	AOR-15154-200 VINTAGE	1/4 yard		D	E014-1265 ORANGE	1/4 yard

## Notes Before You Begin

- Please read through all of the instructions before beginning.
- All of the seam allowances are 1/4" unless otherwise noted.
- Press all seam allowances open after each seam is sewn, unless otherwise noted.
- Remember to measure twice and cut once!

### Preparing the Patterns

- Print pages 5 and 6 at 100%. Cut pattern pieces out and tape the two Lining pieces together along the red dashed line.

## Cutting Instructions

### Fabric A

- Fussycut a rectangle 4-1/4" x 5-3/4". You may be cutting into the black border around the image a bit.

### Fabric B

- Cut one from the Lining pattern.

### Fabric C

- Cut one from the Inner Flap pattern.

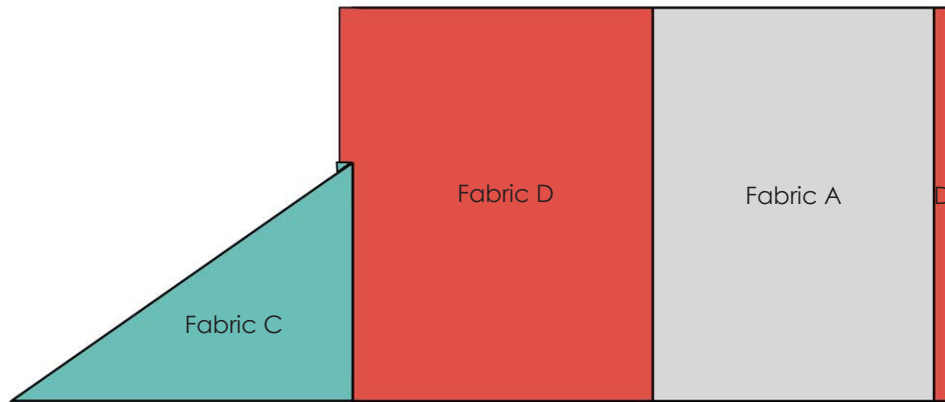
### Fabric D

- Cut one strip 3/4" x 5-3/4".
- Cut one rectangle 4-1/2" x 5-3/4".

## Assembly Instructions

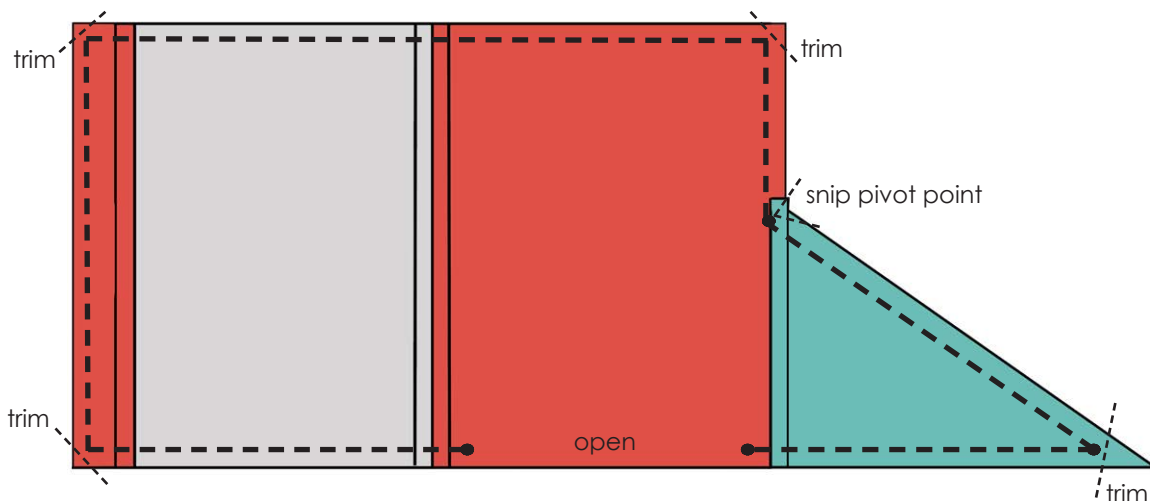
### Step 1: Assemble Outer Wallet

- Sew the Fabric D  $3/4"$  x  $5-3/4"$  strip to the right side of the Fabric A rectangle. Press seam allowance toward Fabric A.
- Sew the Fabric D  $4-1/2"$  x  $5-3/4"$  rectangle to the left side of the Fabric A rectangle. Press seam allowance open.
- Sew the Fabric C Inner Flap to the left side of the Fabric D rectangle, lining up the bottom edges (as pictured). Press seam allowance toward Fabric C.



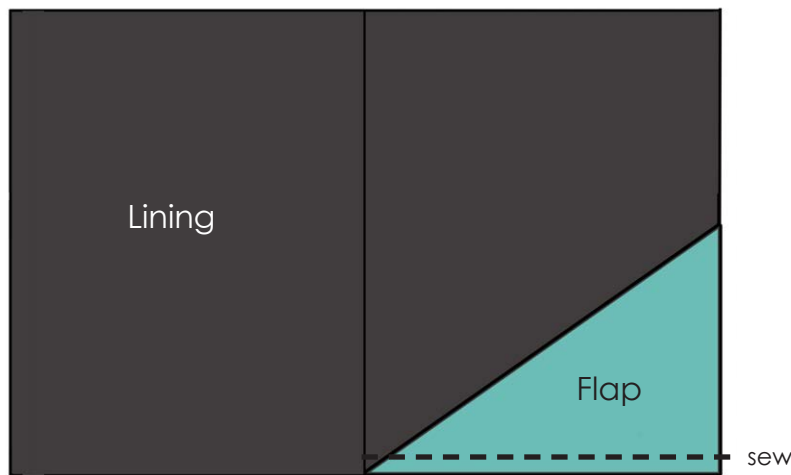
### Step 2: Sew Outer Wallet and Lining Together

- Lay the assembled Outer Wallet right sides together with the Lining. Pin and sew around the perimeter, leaving a 3" opening at the bottom. Snip corners and pivot point, as pictured.



### Step 3: Finishing

- Flip the wallet right side out through the opening (use a blunt pencil, or chopstick to push out the corners and edges). Fold the seam allowances at the opening to the inside and press the wallet flat, making sure the edges are crisp and pushed out entirely.
- Top-stitch around the entire perimeter of the wallet, an 1/8" away from the edge. The topstitching will close the opening, as you sew over it.
- Fold the Inner Flap to the inside, so it is on top of the Lining. Sew the Inner Flap to the Lining following the top-stitching line along the bottom. Be sure to backstitch at both ends.



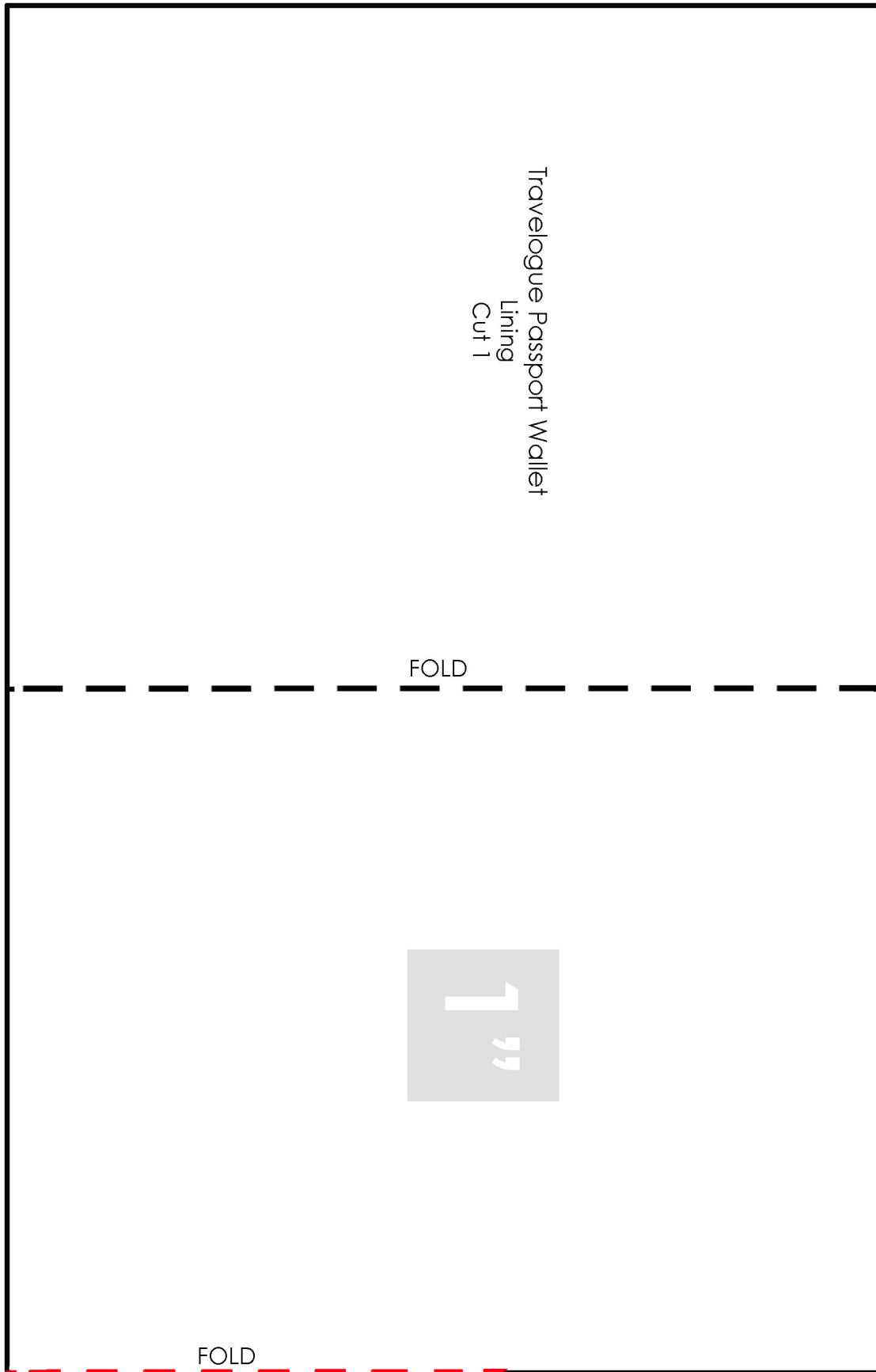
- Fold the wallet closed and lightly press to create a spine.

Your project is complete.  
Enjoy your passport wallet!



# Travelogue Passport Wallet

Tape together along red line  
Cut 1 Lining and 1 Flap Outer



## Travelogue Passport Wallet

Tape together along red line  
Cut 1 Lining and 1 Flap Outer

