

# TIDAL WAVE

Designed by Ariga Wilson for RK  
[www.robertkaufman.com](http://www.robertkaufman.com)

Featuring *Wishwell*

Neutral Dawn  
**Silverstone**  
Vanessa Lillrose & Linda Fitch

Fat Quarter  
Friendly



Finished quilt measures: 62" x 77-1/2"

Difficulty Rating: **Beginner**

**ROBERTKAUFMAN**  
F A B R I C S

For questions about this pattern, please email [Patterns@RobertKaufman.com](mailto:Patterns@RobertKaufman.com).

## Fabric and Supplies Needed

*Fabric amounts based on yardage that is 42" wide.*

Color	Fabric	Name/SKU	Yardage	Color	Fabric	Name/SKU	Yardage
		FQ-1927-21 SILVERSTONE NEUTRAL DAWN	One Fat Quarter Bundle		Binding*	WELM-21435-335 SHALE	5/8 yard
	A	WELM-19505-187 PLATINUM	5/8 yard	<p>You will also need: 4-3/4 yards for backing</p>			
<p>Copyright 2022, Robert Kaufman For individual use only - Not for resale</p>							

## Notes Before You Begin

- Read through all of the instructions before beginning.
- All of the seam allowances are 1/4" unless otherwise noted.
- Press seam allowances open unless otherwise noted.
- Width of fabric (WOF) is equal to at least 42" wide.
- Right sides together has been abbreviated to RST.
- Remember to measure twice and cut once!

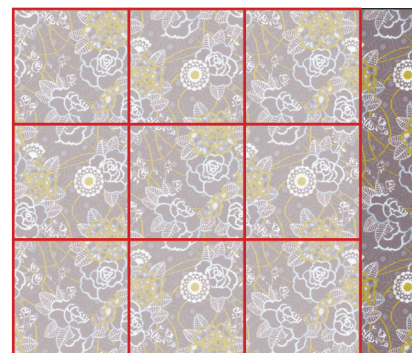
## Cutting Instructions

### From each Fat Quater, cut:

two-three 6" x WOF strips.

Subcut at least six 6" squares from each fabric.

A total of one-hundred and forty-two squares are needed.



### From Fabric A, cut:

three 6" x WOF strips.

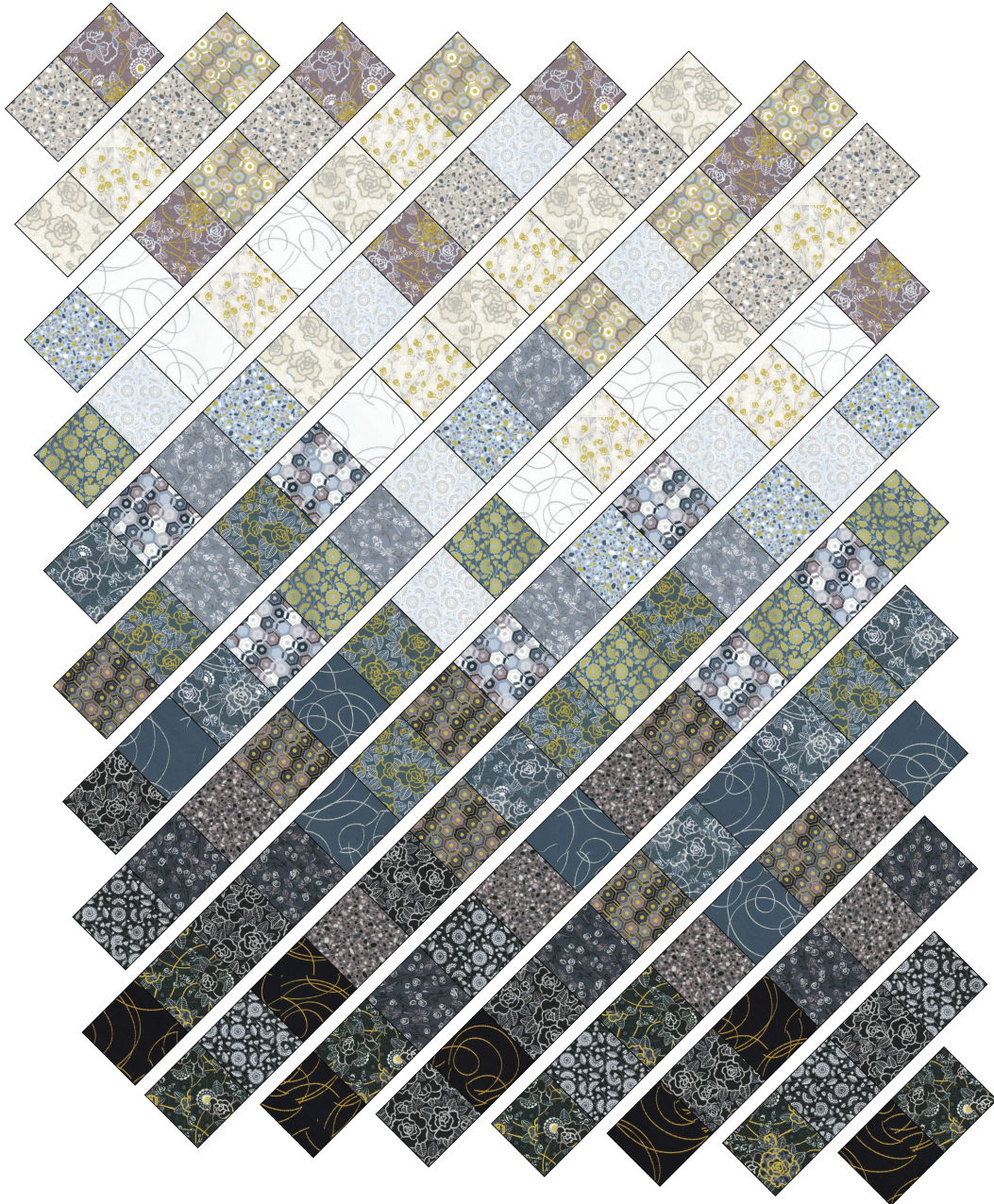
Subcut eighteen 6" squares.

Subcut each square once on the diagonal to yield a total of thirty-six triangles.

### From the Binding Fabric, cut:

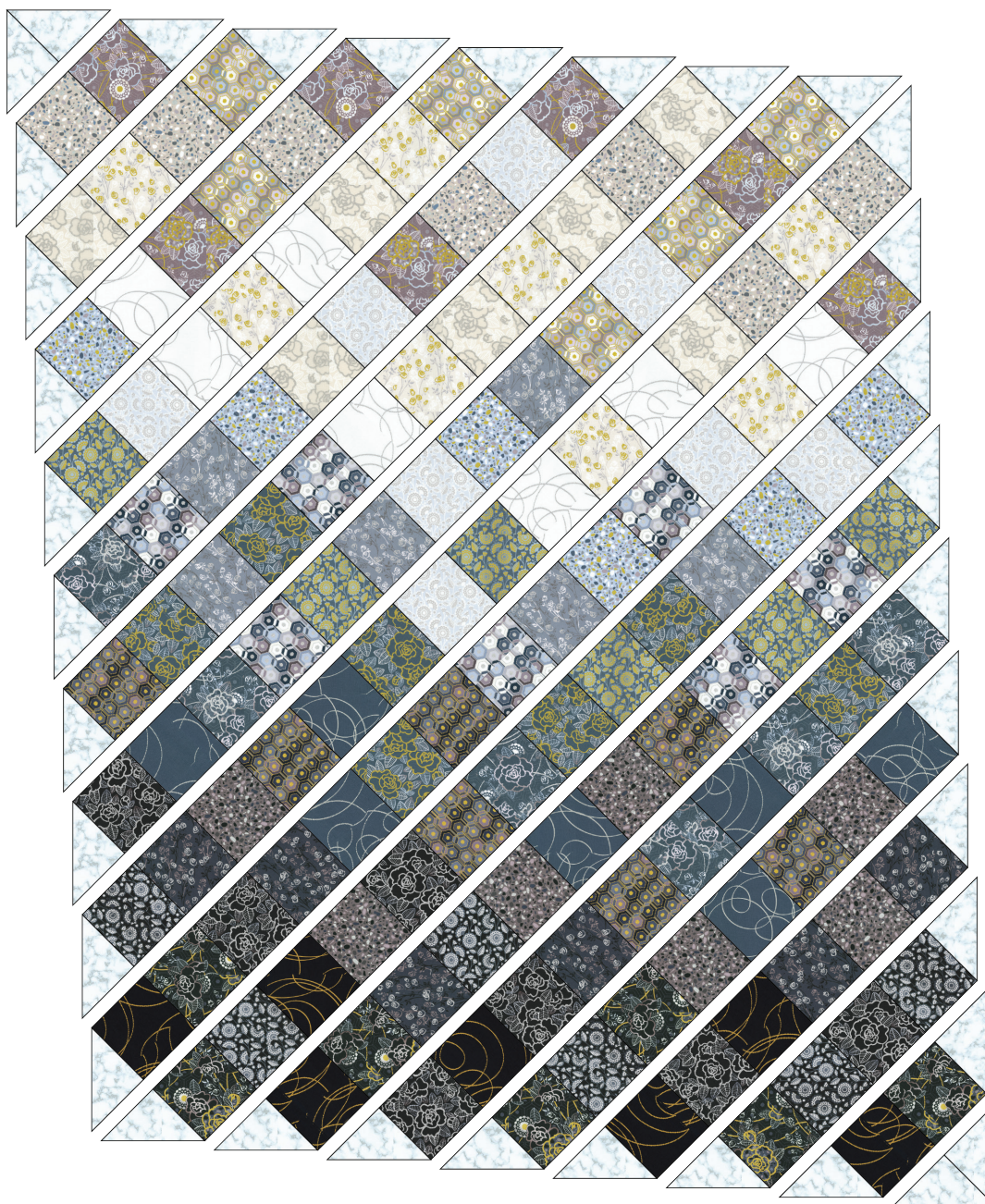
eight 2-1/2" x WOF strips.





**Step 1:** Arrange the blocks into sixteen *diagonal* rows. Note the fabric placement and block orientation in the Quilt Assembly Diagram.

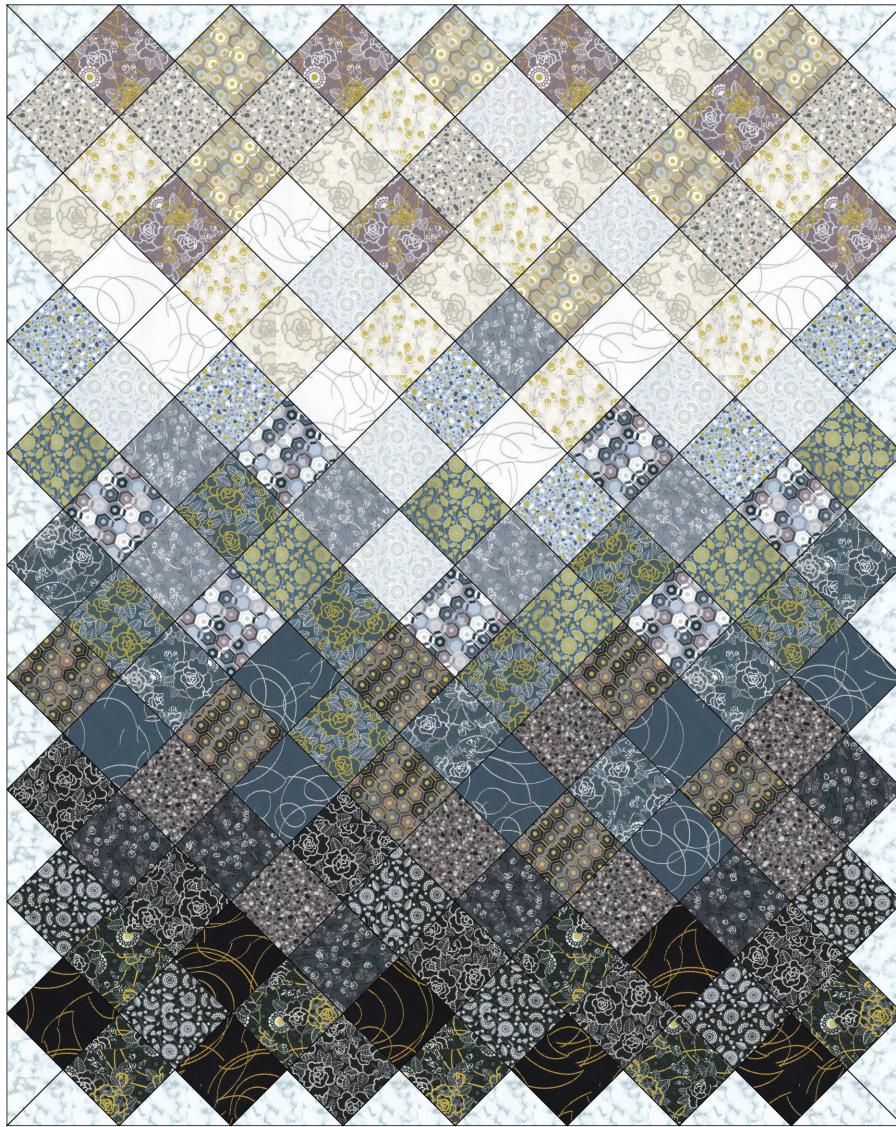




**Step 2:** Place a Fabric A triangle on both ends of each row. Arrange two Fabric A triangles to form an additional row in the top-left corner of the quilt arrangement. Arrange the last two Fabric A triangles to form an additional row in the bottom-right corner of the quilt arrangement.

**Step 3:** Sew the blocks together to form the diagonal rows. Press the seams to the left in the odd-numbered rows and to the right in the even-numbered rows.





**Step 4:** Sew the diagonal rows together to form the quilt center. Press the row seams open.

Your quilt top is complete! Baste, quilt, bind, and enjoy!