

THE WOMAN IN GOLD

Designed by Robert Kaufman Fabrics
www.robertkaufman.com

Featuring **GUSTAV KLIMT**



Finished quilt measures: 64" x 84"

Pattern Level: Confident Beginner


*"I have basic block construction down
and would like to learn a new trick!"*

ROBERT KAUFMAN
F A B R I C S

For questions about this pattern, please email Patterns@RobertKaufman.com.

Fabric and Supplies Needed

Fabric amounts based on yardage that is 42" wide.

Color	Fabric	Name/SKU	Yardage	Color	Fabric	Name/SKU	Yardage
	A	SRKM-17179-133 GOLD	2/3 yard (one panel)		E	SRKM-17181-184 CHARCOAL	5/8 yard
	B	SRKM-17182-2 BLACK	1 yard		F	SRKM-17182-12 GREY	1/4 yard
	C	SRKM-17181-4 BLUE	3/4 yard		G	SRKM-17183-72 COBALT	1 yard
	D	SRKM-17181-13 TAN	1-7/8 yards		Binding*	SRKM-17182-2 BLACK <i>*Also used for Fabric B</i>	5/8 yard
<p>Copyright 2017, Robert Kaufman For individual use only - Not for resale</p>				<p>You will also need: 5-1/8 yards for backing</p>			

Notes Before You Begin

- Read through all of the instructions before beginning.
- All of the seam allowances are 1/4" unless otherwise noted.
- Press seam allowances open unless otherwise noted.
- Width of fabric (WOF) is equal to at least 42" wide.
- Right sides together has been abbreviated to RST.
- Remember to measure twice and cut once!

Cutting Instructions

From Fabric A, fussy cut:

one 20-1/2" x 38-1/2" center panel

From Fabric B, cut:

one 5" x WOF strip. Subcut:

four 5" squares for the HSTs

three 2-3/4" x WOF strips. Subcut:

two 2-3/4" x 20-1/2" center panel top/bottom borders

two 2-3/4" x 43" center panel side borders

three 3-3/4" x WOF strips. Subcut:

eight 3-3/4" x 5-1/2" rectangles for the B Blocks

eight 3-3/4" x 6" rectangles for the B Blocks

three 2-1/2" x WOF strips. Subcut:

eight 2-1/2" x 6" rectangles for the A Blocks

eight 2-1/2" x 5-1/2" rectangles for the A Blocks

From Fabric C, cut:

two 5-1/4" x WOF strips. Trim to yield:

two 5-1/4" x 25" top/bottom inner borders

three 4-1/4" x WOF strips. Sew together, end-to-end, then trim to yield:

two 4-1/4" x 52-1/2" side inner borders

From Fabric D, cut:

six 4-3/4" x WOF strips*. Sew together, end-to-end, then trim to yield:

two 4-3/4" x 48-1/2" top/bottom middle borders

two 4-3/4" x 77" side middle borders

one 5" x WOF strip. Subcut:

eight 5" squares for the HSTs

four 3-3/4" x WOF strips. Subcut:

eight 3-3/4" x 3-1/2" rectangles for the B Blocks

eight 3-3/4" x 2" rectangles for the B Blocks

eight 3-3/4" x 3" rectangles for the B Blocks

eight 3-3/4" x 4-1/2" rectangles for the B Blocks

three 2-1/2" x WOF strips. Subcut:

eight 2-1/2" x 4-1/2" rectangles for the A Blocks

eight 2-1/2" x 3" rectangles for the A Blocks

eight 2-1/2" x 2-1/2" rectangles for the A Blocks

eight 2-1/2" x 3-1/2" rectangles for the A Blocks

*Trim the selvages sparingly in order to avoid the need for another WOF strip.

From Fabric E, cut:

three 3-3/4" x WOF strips. Subcut:

eight 3-3/4" x 7" rectangles for the B Blocks

eight 3-3/4" x 4-1/2" rectangles for the B Blocks

three 2-1/2" x WOF strips. Subcut:

eight 2-1/2" x 4-1/2" rectangles for the A Blocks

eight 2-1/2" x 6-1/2" rectangles for the A Blocks

From Fabric F, cut:

one 5" x WOF strip. Subcut:
four 5" squares for the HSTs

From Fabric G, cut:

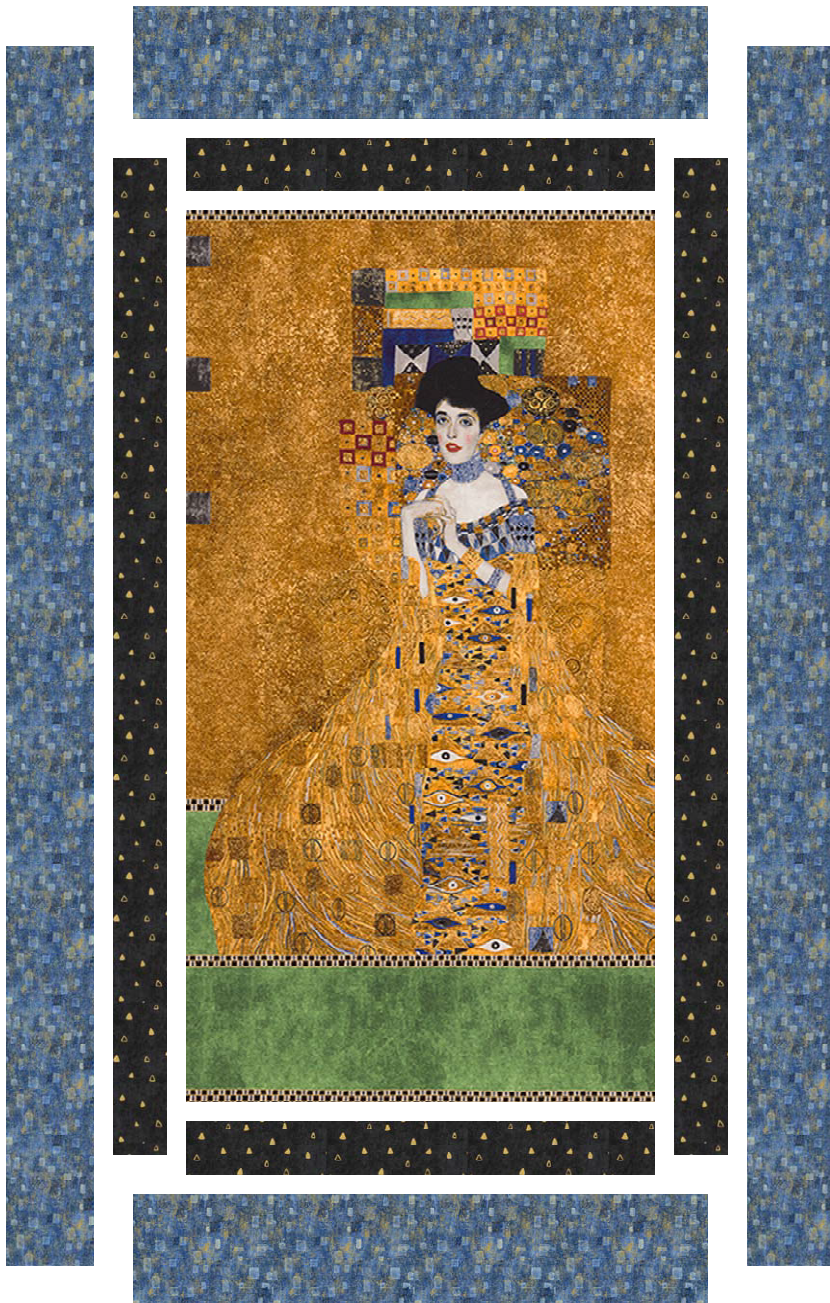
seven 4-1/4" x WOF strips*. Sew together, end-to-end, then trim to yield:
two 4-1/4" x 57" top/bottom outer borders
two 4-1/4" x 84-1/2" side outer borders

*Trim the selvages sparingly in order to avoid the need for another WOF strip.

From the Binding Fabric, cut:

eight 2-1/2" x WOF strips

Assemble the Quilt Center



Step 1: Sew the Fabric B center panel top/bottom borders to the quilt center. Press toward the borders. Sew the Fabric B center panel side borders to the sides of the quilt center. Press toward the borders.

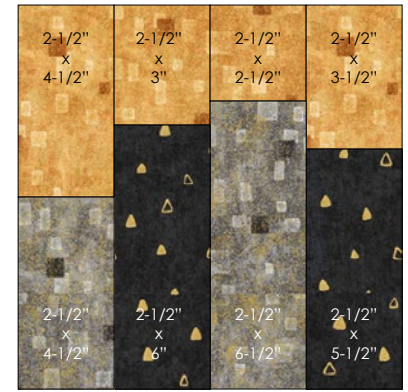
Step 2: Sew Fabric C the top and bottom inner borders to the quilt center. Press toward the borders. Sew the Fabric C side inner borders to the sides of the quilt center. Press toward the borders.

Assemble the A Blocks

Step 3: Gather:

- one 2-1/2" x 4-1/2" Fabric D rectangle
- one 2-1/2" x 3" Fabric D rectangle
- one 2-1/2" x 2-1/2" Fabric D rectangle
- one 2-1/2" x 3-1/2" Fabric D rectangle
- one 2-1/2" x 4-1/2" Fabric E rectangle
- one 2-1/2" x 6-1/2" Fabric E rectangle
- one 2-1/2" x 6" Fabric B rectangle
- one 2-1/2" x 5-1/2" Fabric B rectangle

Arrange as shown in the Block Assembly Diagram.



Step 4: Sew the rectangles together to form four columns. Press the seams toward the darker fabric. Sew the columns together to form the A Block. Press. The block will measure 8-1/2" square.

Repeat Steps 3 and 4 to make a total of eight A Blocks.

Assemble the B Blocks

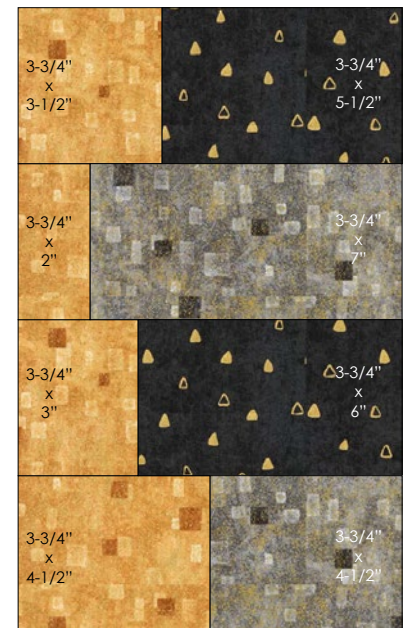
Step 5: Gather:

- one 3-3/4" x 4-1/2" Fabric D rectangle
- one 3-3/4" x 3" Fabric D rectangle
- one 3-3/4" x 2" Fabric D rectangle
- one 3-3/4" x 3-1/2" Fabric D rectangle
- one 3-3/4" x 4-1/2" Fabric E rectangle
- one 3-3/4" x 7" Fabric E rectangle
- one 3-3/4" x 6" Fabric B rectangle
- one 3-3/4" x 5-1/2" Fabric B rectangle

Arrange as shown in the Block Assembly Diagram.

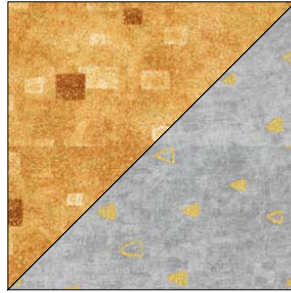
Step 6: Sew the rectangles together to form four rows. Press the seams toward the darker fabric. Sew the rows together to form the B Block. Press. The block will measure 8-1/2" x 13-1/2".

Repeat Steps 5 and 6 to make a total of eight B Blocks.



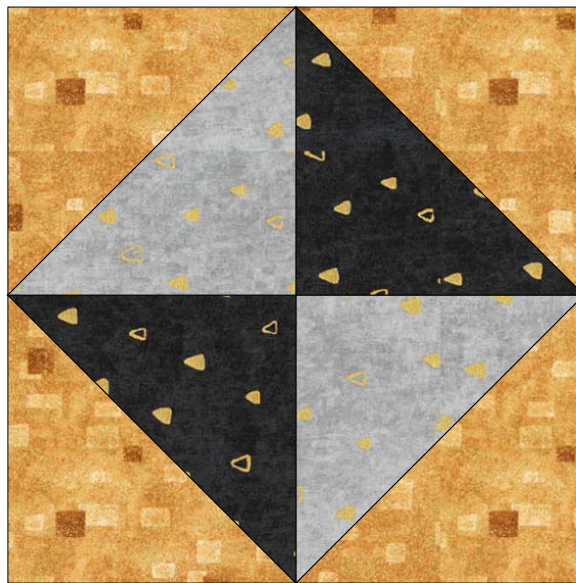
Assemble the Half-Square Triangles (HSTs)

Step 7: Pair a 5" Fabric D square with a 5" Fabric F square, RST. Mark a diagonal line on the wrong side of one square. Sew $\frac{1}{4}$ " away from both sides of the marked line. Cut on the marked line, creating two half-square triangles (HSTs). Press toward the darker fabric. Trim to $4\frac{1}{2}$ " square. Repeat to make eight D/F HSTs.



Repeat Step 7 to make a total of eight D/B HSTs.

Step 8: Gather two D/B and two D/F HSTs. Arrange in two rows of two, as shown. Sew the HSTs together to form rows, pressing toward the D/F HSTs. Sew the rows together to form an $8\frac{1}{2}$ " square block. Press. Repeat to make a total of four blocks.



Assemble the Quilt



Step 9: Sew four completed B Blocks together to form a side border. Press. Repeat to make a second side border. Sew to the left and right edges of the quilt center, noting the orientation of the border and pressing toward the quilt center.

Step 10: Sew four completed A Blocks together to form the top border. Press. Repeat to make the bottom border.

Step 11: Sew one completed Step 8 block to the left and right edges of the top border, noting the orientation of the blocks. Press toward the HST blocks. Repeat with the bottom border.

Step 12: Sew the top and bottom borders to the quilt center, pressing toward the quilt center.

Step 13: Sew the Fabric D top and bottom middle borders to the quilt center. Press toward the borders. Sew the Fabric D side middle borders to the sides of the quilt center. Press toward the borders.

Step 14: Sew the Fabric G top and bottom outer borders to the quilt center. Press toward the borders. Sew the Fabric G side outer borders to the sides of the quilt center. Press toward the borders.

Your quilt top is complete! Baste, quilt, bind and enjoy!