

THE MONA LISA

Designed by Ariga Mahmoudlou for RK
www.robertkaufman.com

Featuring **LEONARDO
DA VINCI** STUDIO
RK



Finished quilt measures: 41-1/2" x 50-1/2"

Difficulty Rating: **Beginner**

ROBERTKAUFMAN
F A B R I C S

For questions about this pattern, please email Patterns@RobertKaufman.com.

Fabric and Supplies Needed

Fabric amounts based on yardage that is 42" wide.

Color	Fabric	Name/SKU	Yardage	Color	Fabric	Name/SKU	Yardage
	A	SRKD-20096-199 ANTIQUE	1 yard (one full panel)		D	SRKD-20100-169 EARTH	1/3 yard
	B	SRKD-20100-142 AMBER	1/4 yard		Binding	SRKD-20101-184 CHARCOAL	3/8 yard
	C	SRKD-20098-199 ANTIQUE	1/2 yard	<div>You will also need: 2-3/4 yard for backing</div>			
Copyright 2020, Robert Kaufman For individual use only - Not for resale							

Notes Before You Begin

- Read through all of the instructions before beginning.
- All of the seam allowances are 1/4" unless otherwise noted.
- Press seam allowances open unless otherwise noted.
- Width of fabric (WOF) is equal to at least 42" wide.
- Right sides together has been abbreviated to RST.
- Remember to measure twice and cut once!

Cutting Instructions

From Fabric A, fussy cut:

one 31" x 40" center panel

From Fabric B, cut:

four 1-1/2" x WOF strips. Subcut:

two 1-1/2" x 40" side inner borders

two 1-1/2" x 33" top/bottom inner borders

From Fabric C, cut:

four 3-1/2" x WOF strips. Subcut:

two 3-1/2" x 42" side middle borders

two 3-1/2" x 39" top/bottom middle borders

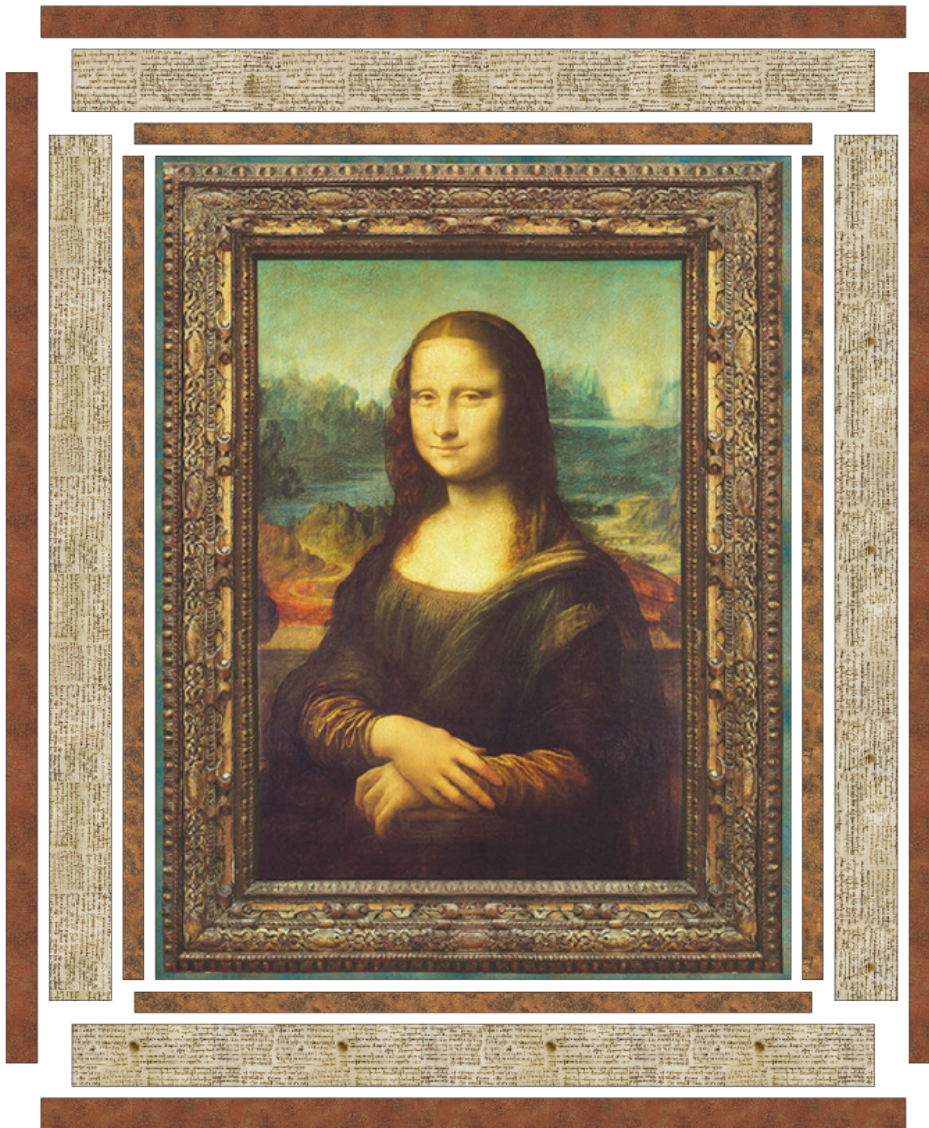
From Fabric D, cut:

five 2" x WOF strips. Sew together, end-to-end, then trim:
two 2" x 48" side outer borders
two 2" x 42" top/bottom outer borders

From the Binding Fabric, cut:

five 2-1/2" x WOF strips

Assemble the Quilt



Step 1: Sew the side inner borders to the sides of the quilt center. Press toward the borders. Sew the top and bottom inner borders to the quilt center. Press toward the borders.

Step 2: Sew the side middle borders to the sides of the quilt center. Press toward the borders. Sew the top and bottom middle borders to the quilt center. Press toward the borders.

Step 3: Sew the side outer borders to the sides of the quilt center. Press toward the borders. Sew the top and bottom outer borders to the quilt center. Press toward the borders.

Your quilt top is complete!
Baste, quilt, bind and enjoy!