

# TEA PARTY TERRACE

Designed by Wishwell for RK  
[www.robertkaufman.com](http://www.robertkaufman.com)

Featuring **Daisy Made**  
*Wishwell*  
fabric for daydreamers



Finished quilt measures: 54" x 72"

Quilt shown in "WARM" colorstory.

For alternate "COOL" colorstory see pages 8-9.

Difficulty Rating: **Intermediate**

**ROBERTKAUFMAN**  
F A B R I C S

For questions about this pattern, please email [Patterns@RobertKaufman.com](mailto:Patterns@RobertKaufman.com).

## Fabric and Supplies Needed

*Fabric amounts based on yardage that is 42" wide.*

Color	Fabric	Name/SKU	Yardage	Color	Fabric	Name/SKU	Yardage
	A	WEL-19424-412 DOVE	1-1/8 yards		J	WEL-19424-165 COPPER	2/3 yard
	B	WEL-19427-130 SUNSHINE	3/4 yard		K	WEL-19425-73 LAKE	2/3 yard
	C	WEL-19427-62 INDIGO	1/2 yard		L	WEL-19426-165 COPPER	2/3 yard
	D	WEL-19425-21 LILAC	5/8 yard		M	WEL-19424-70 AQUA	1/2 yard
	E	WEL-19427-119 MAUVE	3/8 yard		N	WEL-19425-97 ROSE	1/2 yard
	F	WEL-19427-213 TEAL	1 yard		O	WEL-19422-32 MINT	1/2 yard
	G	WEL-19424-418 BALLERINA	1/4 yard		P	WEL-19426-119 MAUVE	1/4 yard
	H	WEL-19422-165 COPPER	1/2 yard		Binding*	WEL-19427-119 MAUVE <i>*Also used for Fabric E</i>	5/8 yard
	I	WEL-19426-67 DENIM	1/2 yard				

Copyright 2020, Robert Kaufman  
For individual use only - Not for resale

You will also need:  
3-1/2 yards for backing  
4 yards of fusible web

## Notes Before You Begin

- Read through all of the instructions before beginning.
- All of the seam allowances are 1/4" unless otherwise noted.
- Press seam allowances open unless otherwise noted.
- Width of fabric (WOF) is equal to at least 42" wide.
- Right sides together has been abbreviated to RST.
- Remember to measure twice and cut once!

## Prepare the Templates

**Step 1:** Copy all templates at 100%.

**Step 2:** On the fusible web, trace the indicated number of each Template, as instructed on the Template sheets. Be sure to note the quantity and if the template should be traced in reverse. *Tip: Include the letter shown on the Template. This will help you to ensure you are fusing it to the correct fabric.*

**Step 3:** Cut out each traced shape, leaving 1/4"-1/2" of excess fusible web outside the marked lines. You will NOT cut on the marked/traced lines at this point.

**Step 4:** Follow in the cutting steps below to fuse each piece to the appropriate fabric. Fuse, following the manufacturer's instructions, then cut out each shape on the marked line.

## Cutting Instructions

### **From Fabric A, cut:**

two of Template 1  
two of Template 1-Reversed  
two of Template 13  
two of Template 13-Reversed

### **From Fabric B, cut:**

one 5-1/2" x WOF strip. Subcut:  
    four 5-1/2" squares for the HSTs  
two each of Templates 2-11  
two each of Template 2-11-Reversed  
two each of Template 14-24  
two each of Template 14-24-Reversed

### **From Fabric C, cut:**

two 5-1/2" x WOF strips. Subcut:  
    fourteen 5-1/2" squares for the HSTs  
two each of Template 12  
two each of Template 12-Reversed  
two each of Template 25  
two each of Template 25-Reversed



**From Fabric D, cut:**

one 5-1/2" x WOF strip. Subcut:

two 5-1/2" squares for the HSTs

four of Template 26

four of Template 26-Reversed

**From Fabric E, cut:**

four each of Template 27-37

four each of Template 27-37-Reversed

**From Fabric F, cut:**

two each of Template 38

two each of Template 38-Reversed

two each of Template 39

two each of Template 39-Reversed

two each of Template 43

two each of Template 43-Reversed

two each of Template 44

two each of Template 44-Reversed

four each of Template 40

four each of Template 40-Reversed

six each of Template 41

six each of Template 41-Reversed

six each of Template 42

six each of Template 42-Reversed

**From each of Fabrics G and P, cut:**

one 5-1/2" x WOF strip. Subcut:

six 5-1/2" squares for the HSTs

**From each of Fabrics H and N, cut:**

three 5-1/2" x WOF strips. Subcut:

sixteen 5-1/2" squares for the HSTs

**From each of Fabrics I and M, cut:**

three 5-1/2" x WOF strips. Subcut:

eighteen 5-1/2" squares for the HSTs

**From each of Fabrics J, K and L, cut:**

four 5-1/2" x WOF strips. Subcut:

twenty-four 5-1/2" squares for the HSTs

**From Fabric O, cut:**

three 5-1/2" x WOF strips. Subcut:

twenty 5-1/2" squares for the HSTs

**From the Binding Fabric, cut:**

seven 2-1/2" x WOF strips



## Assemble the Half-Square Triangles (HSTs)

**Step 1:** Pair a 5-1/2" Fabric B square with a 5-1/2" Fabric D square, RST. Mark a diagonal line on the wrong side of one square. Sew 1/4" away from both sides of the marked line. Cut on the marked line, creating two half-square triangles (HSTs). Press toward the darker fabric. Trim to 5" square. Repeat to make four B/D HSTs.



**Step 2:** Repeat Step 1 to make:



four B/O HSTs



four H/I HSTs



twelve N/O HSTs



twelve O/P HSTs



twelve O/G HSTs



sixteen K/J HSTs



sixteen M/L HSTs



twenty M/N HSTs



twenty-eight C/H HSTs



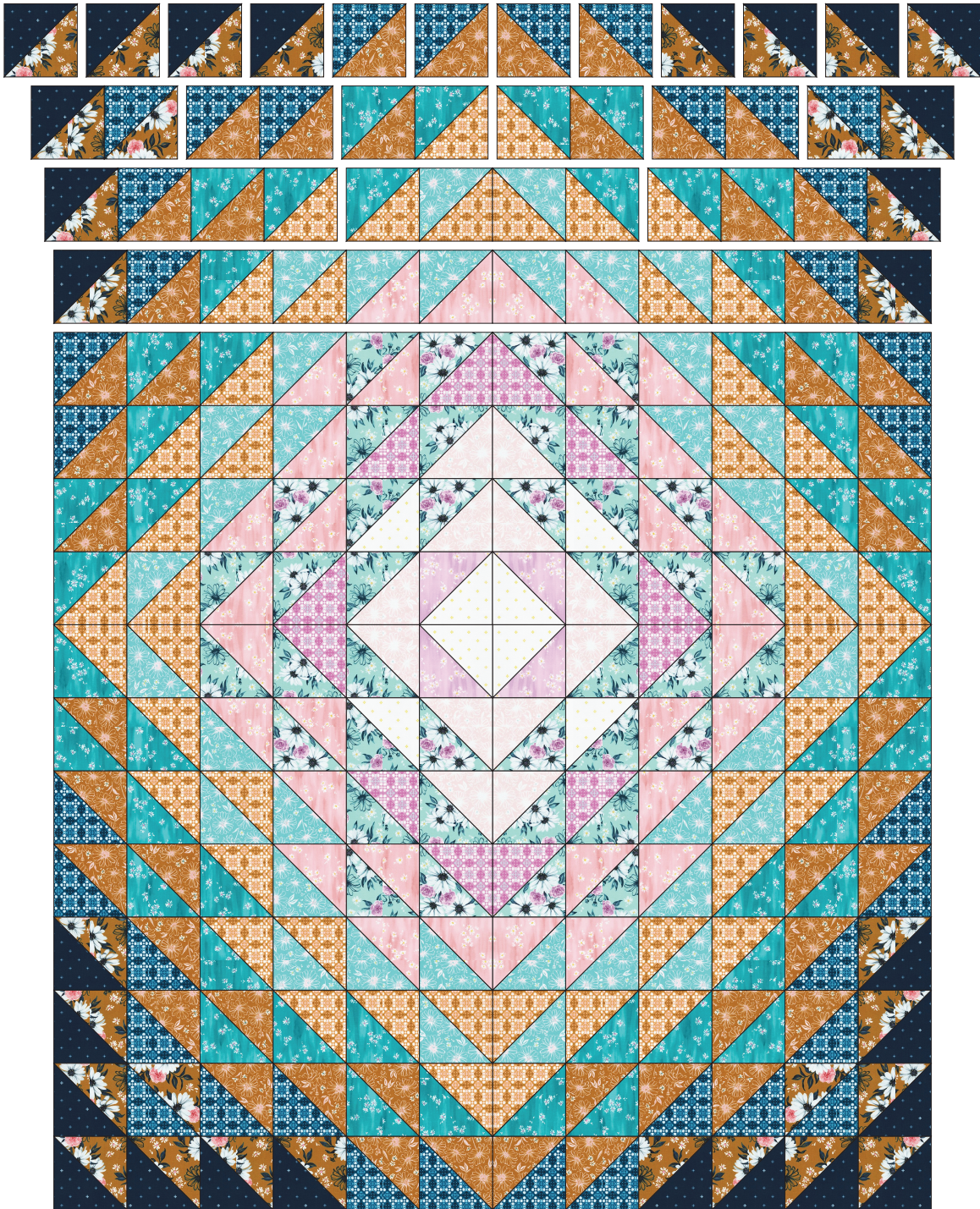
thirty-two K/L HSTs



thirty-two I/J HSTs



## Assemble the Quilt



**Step 3:** Arrange the blocks into sixteen rows of twelve blocks. Note the fabric placement and block orientation in the Quilt Assembly Diagram. *Tip: If you prefer, arrange and sew the quilt top together in four quadrants, each eight rows of six blocks.*

**Step 4:** Sew the blocks together to form rows. Press the rows to the left in the odd numbered rows and to the right in the even numbered rows.

**Step 5:** Sew the rows together to form the quilt center. Press the row seams open.





**Step 6:** Using the Appliqué Placement diagram as a guide, place the assorted template pieces on the quilt top. Pin in place. One piece at a time, peel the paper backing and fuse to the quilt top. Continue adding appliqué pieces to the quilt until all templates are in place. Edge stitch the templates prior to quilting.

Your quilt top is complete! Baste, quilt, bind and enjoy!







# TEA PARTY TERRACE - Cool Colorstory

## Fabric and Supplies Needed

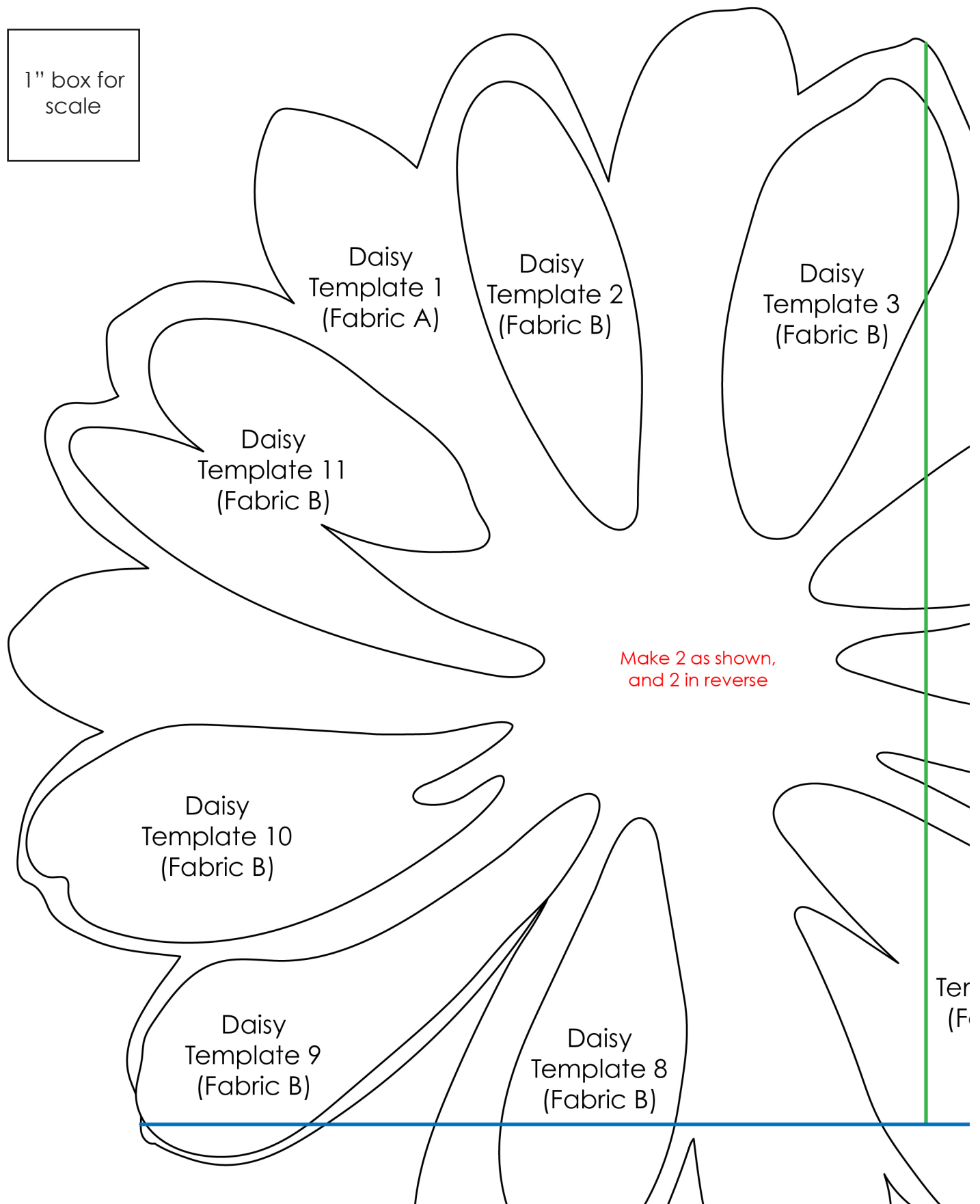
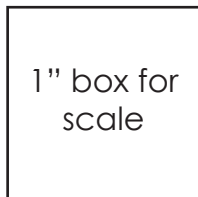
*Fabric amounts based on yardage that is 42" wide.*

Color	Fabric	Name/SKU	Yardage	Color	Fabric	Name/SKU	Yardage
	A	WEL-19424-412 DOVE	3/4 yard		J	WEL-19422-63 SKY	2/3 yard
	B	WEL-19427-130 SUNSHINE	3/4 yard		K	WEL-19424-70 AQUA	2/3 yard
	C	WEL-19427-62 INDIGO	1/2 yard		L	WEL-19423-112 RASPBERRY	2/3 yard
	D	WEL-19425-21 LILAC	5/8 yard	M	Use Fabric D where the cutting and instructions call for this fabric.		
	E	WEL-19427-119 MAUVE	3/8 yard	N	Use Fabric A where the cutting and instructions call for this fabric.		
	F	WEL-19427-213 TEAL	1 yard		O	WEL-19422-32 MINT	1/2 yard
	G	WEL-19424-418 BALLERINA	1/4 yard		P	WEL-19426-119 MAUVE	1/4 yard
	H	WEL-19425-73 LAKE	1/2 yard		Binding*	WEL-19427-119 MAUVE <i>*Also used for Fabric E</i>	5/8 yard
	I	WEL-19426-67 DENIM	1/2 yard	<p>You will also need: 3-1/2 yards for backing 4 yards of fusible web</p>			

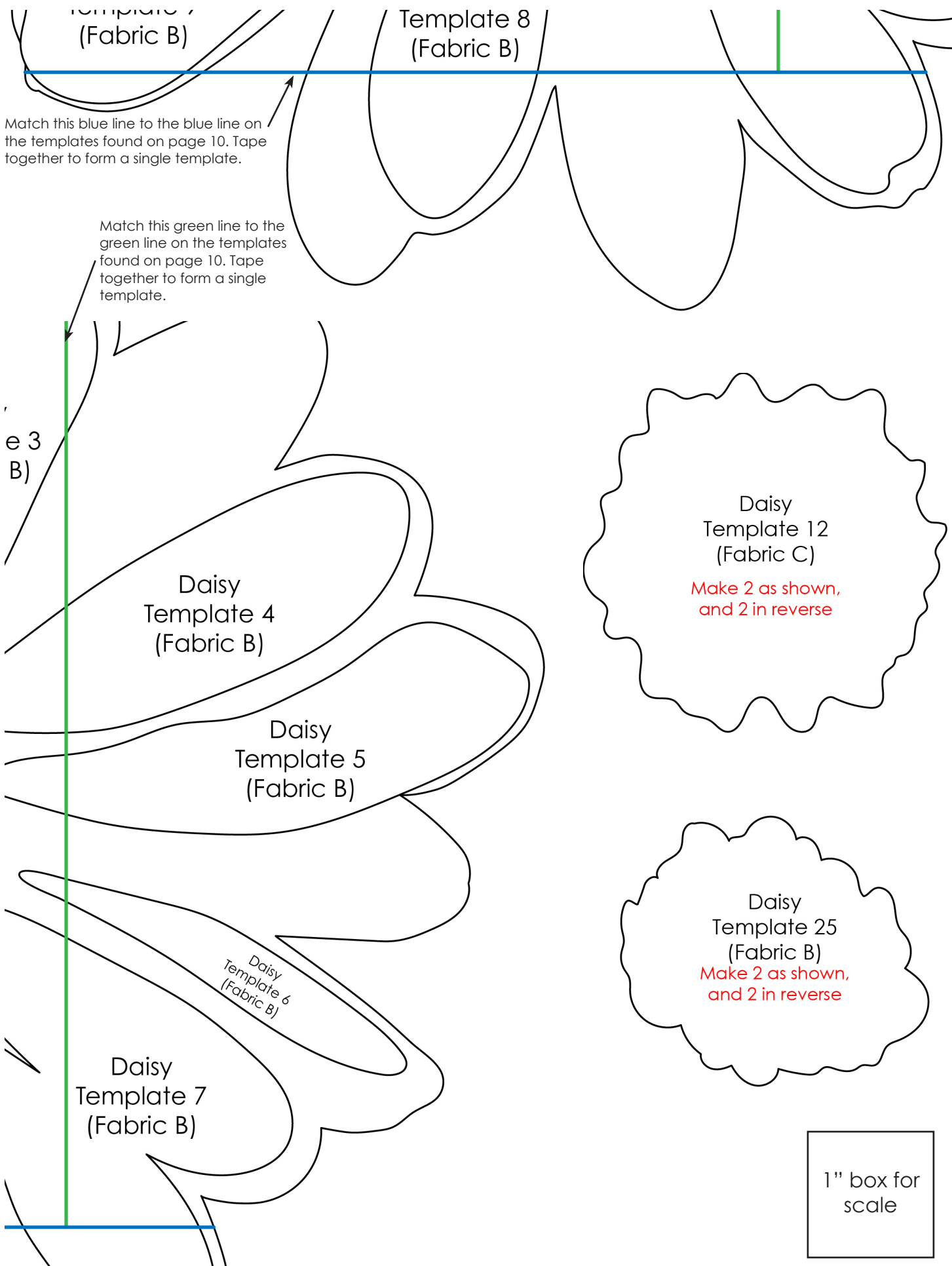
## Templates

Print at 100%.

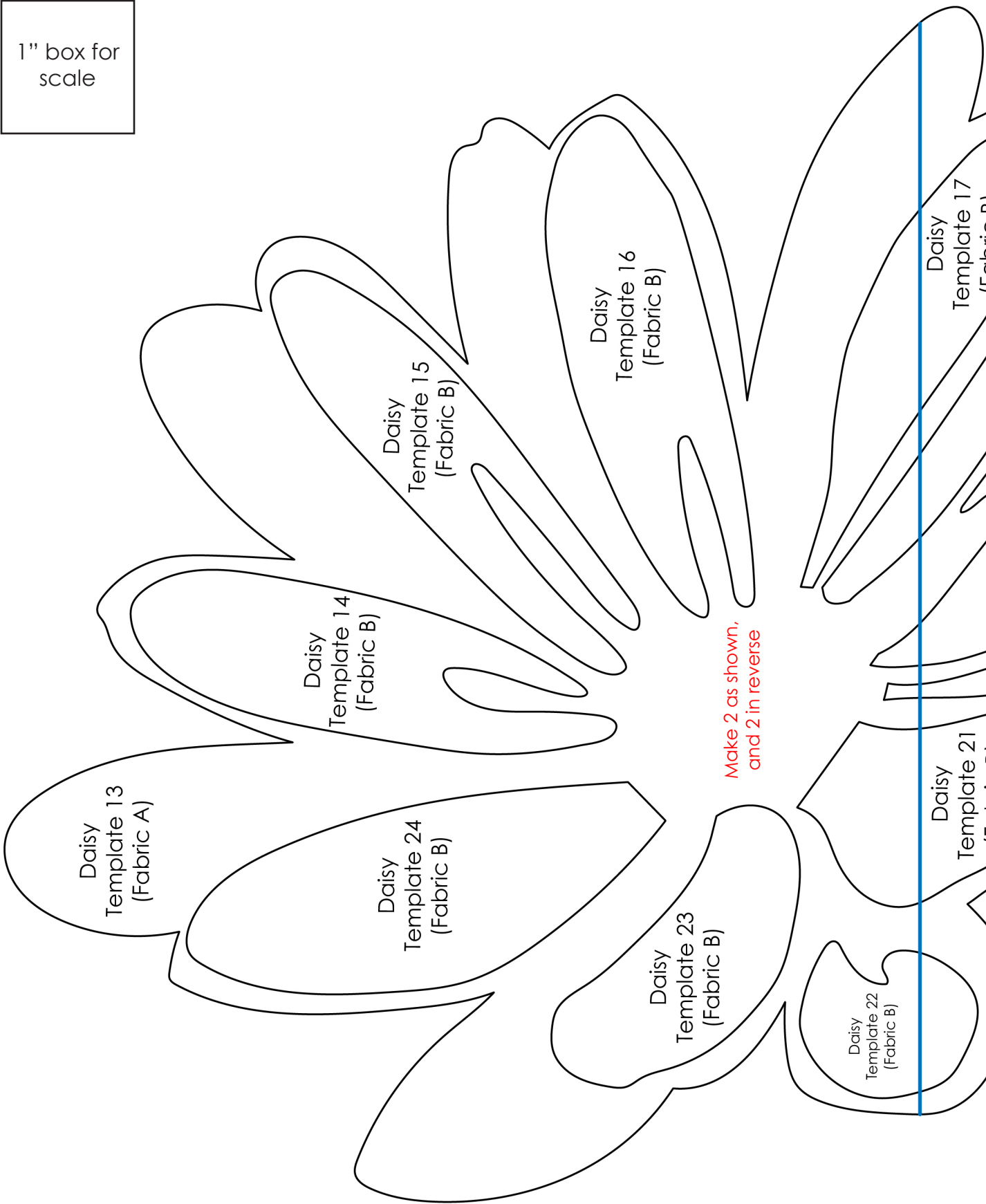
Check size printed correctly using 1" box for scale prior to cutting fabric.

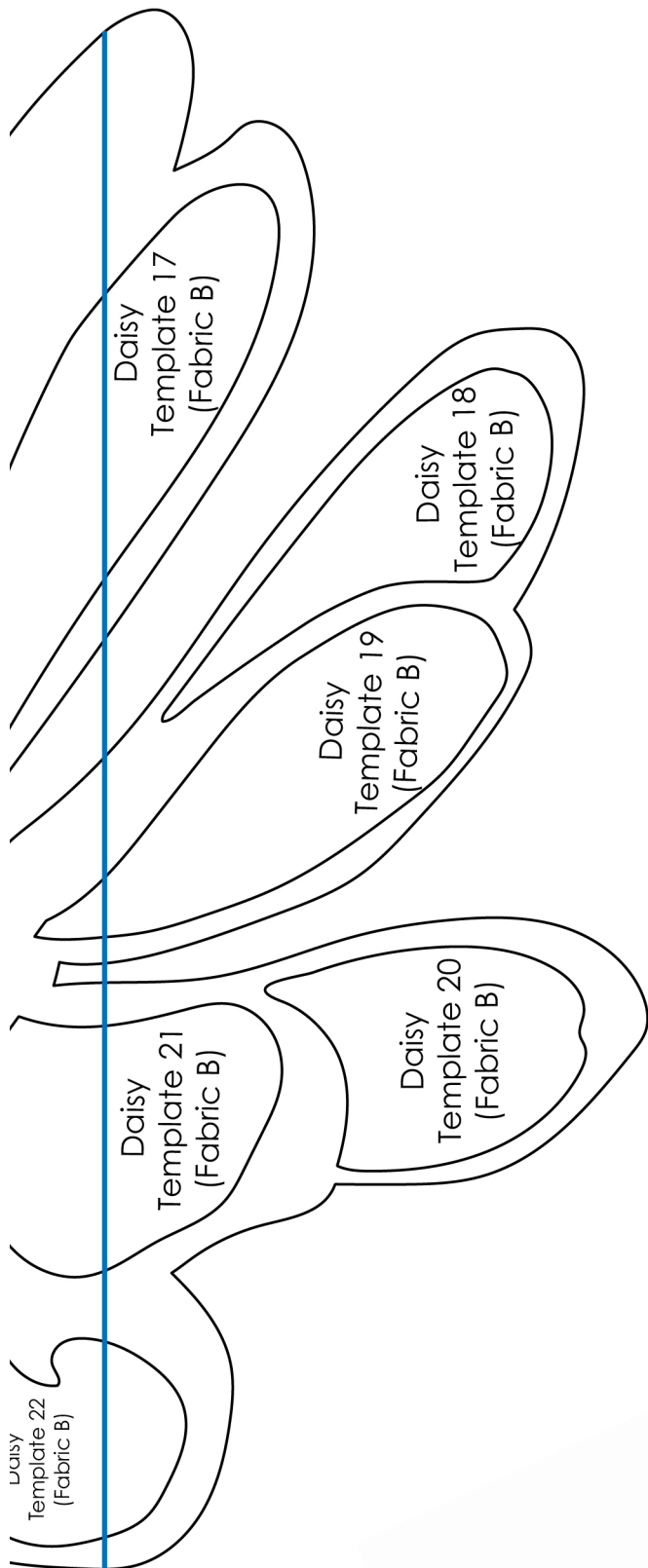






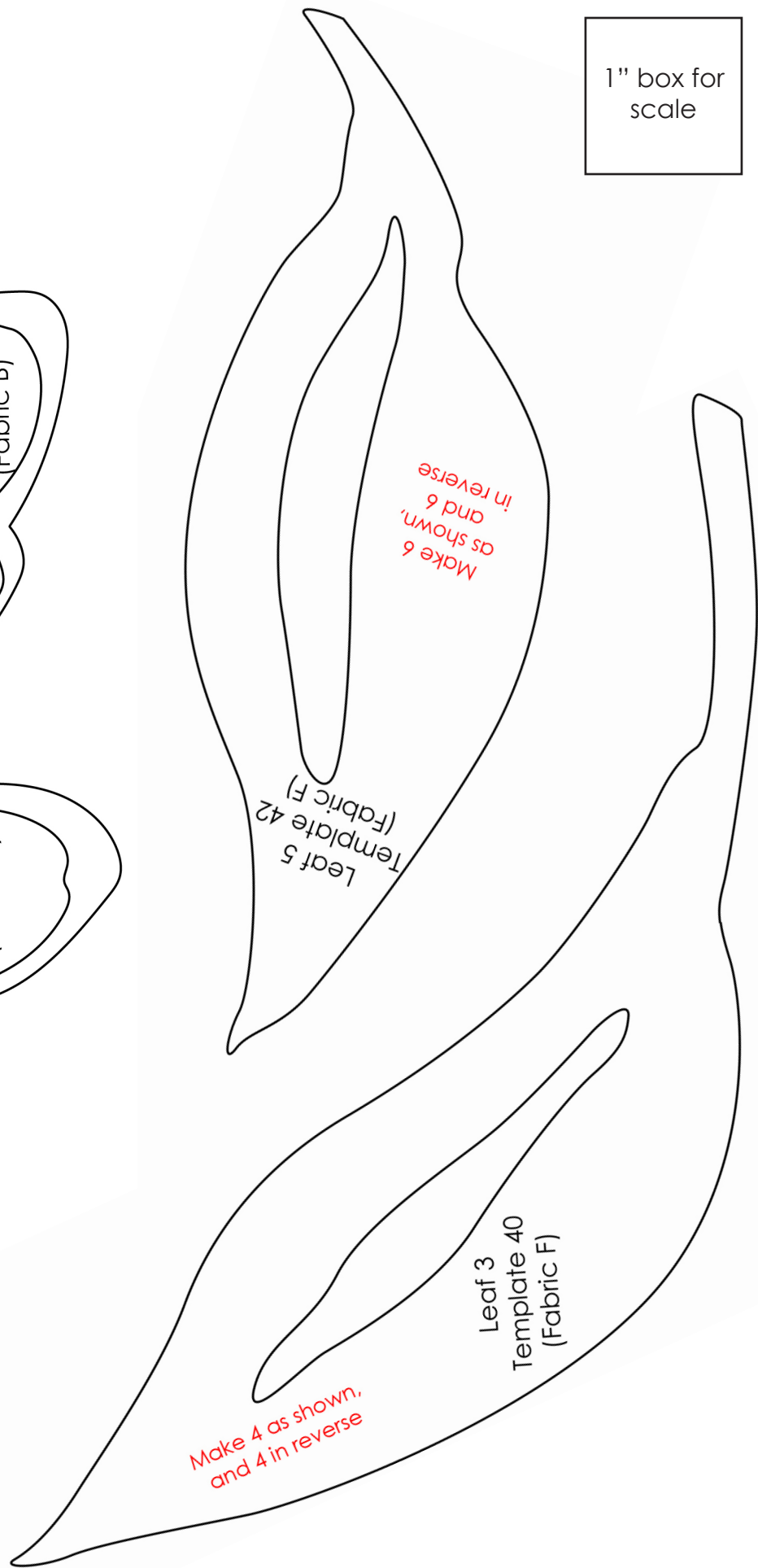
1" box for  
scale





Match this blue line to the template four together to form a

1" box for scale

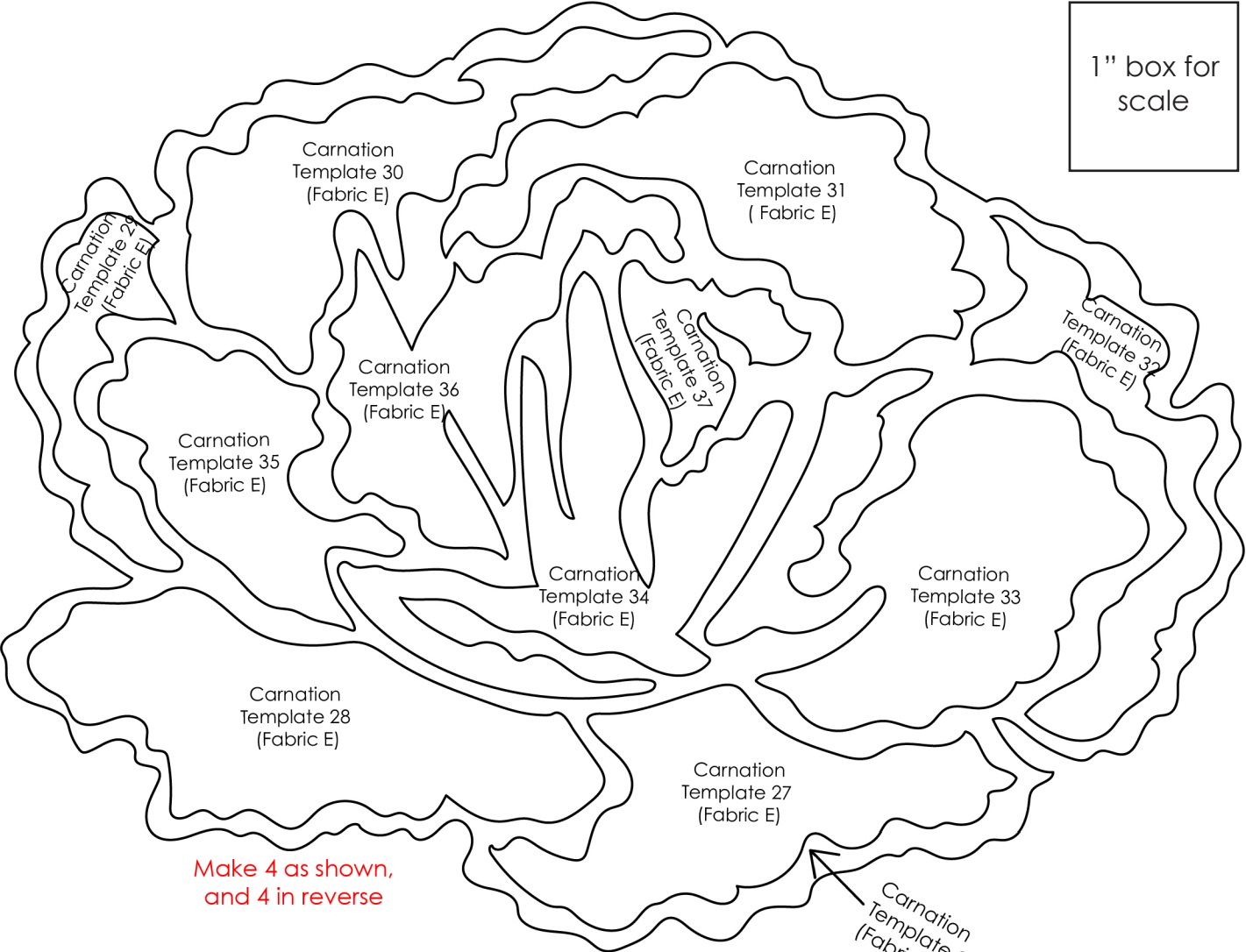


Make 4 as shown, and 4 in reverse

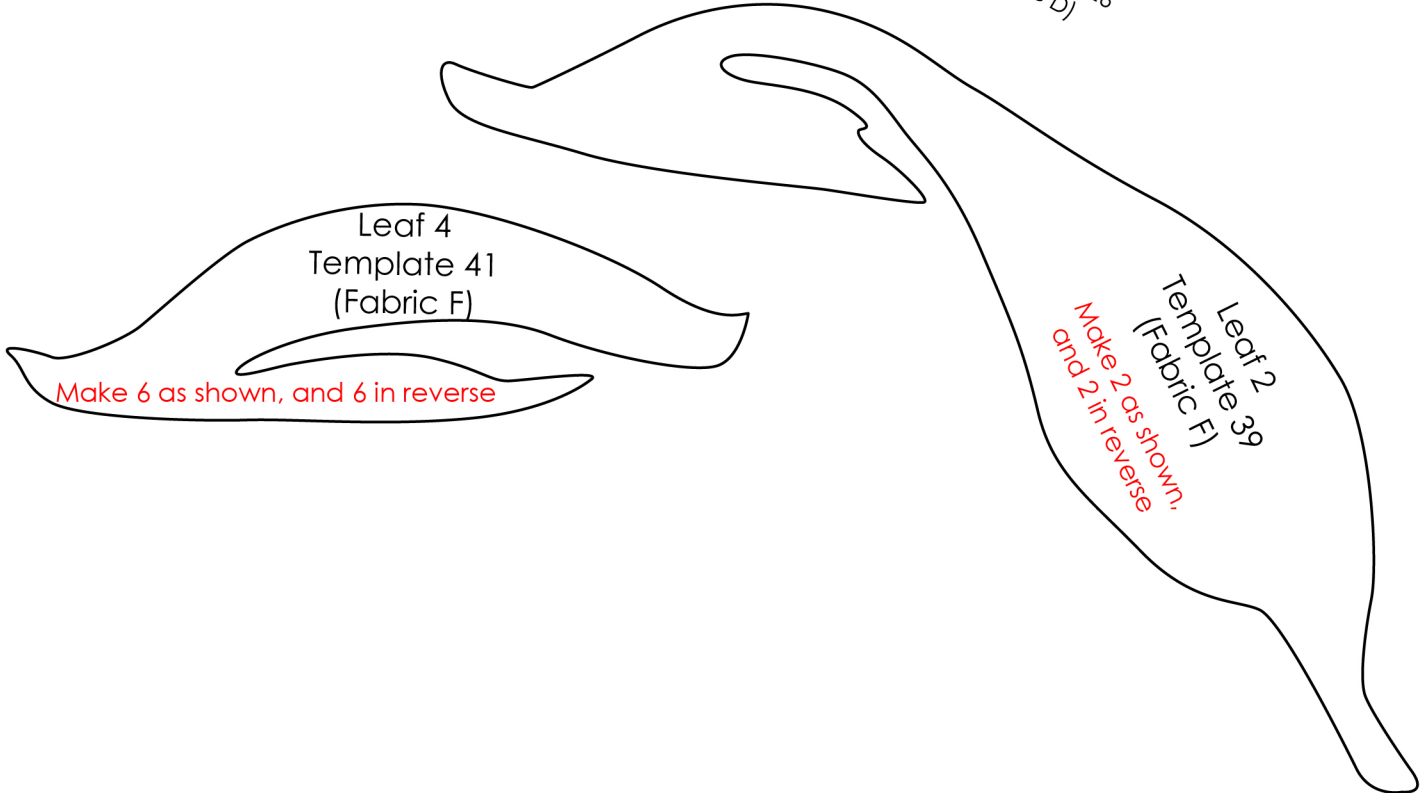
Make 6 as shown, and 6 in reverse

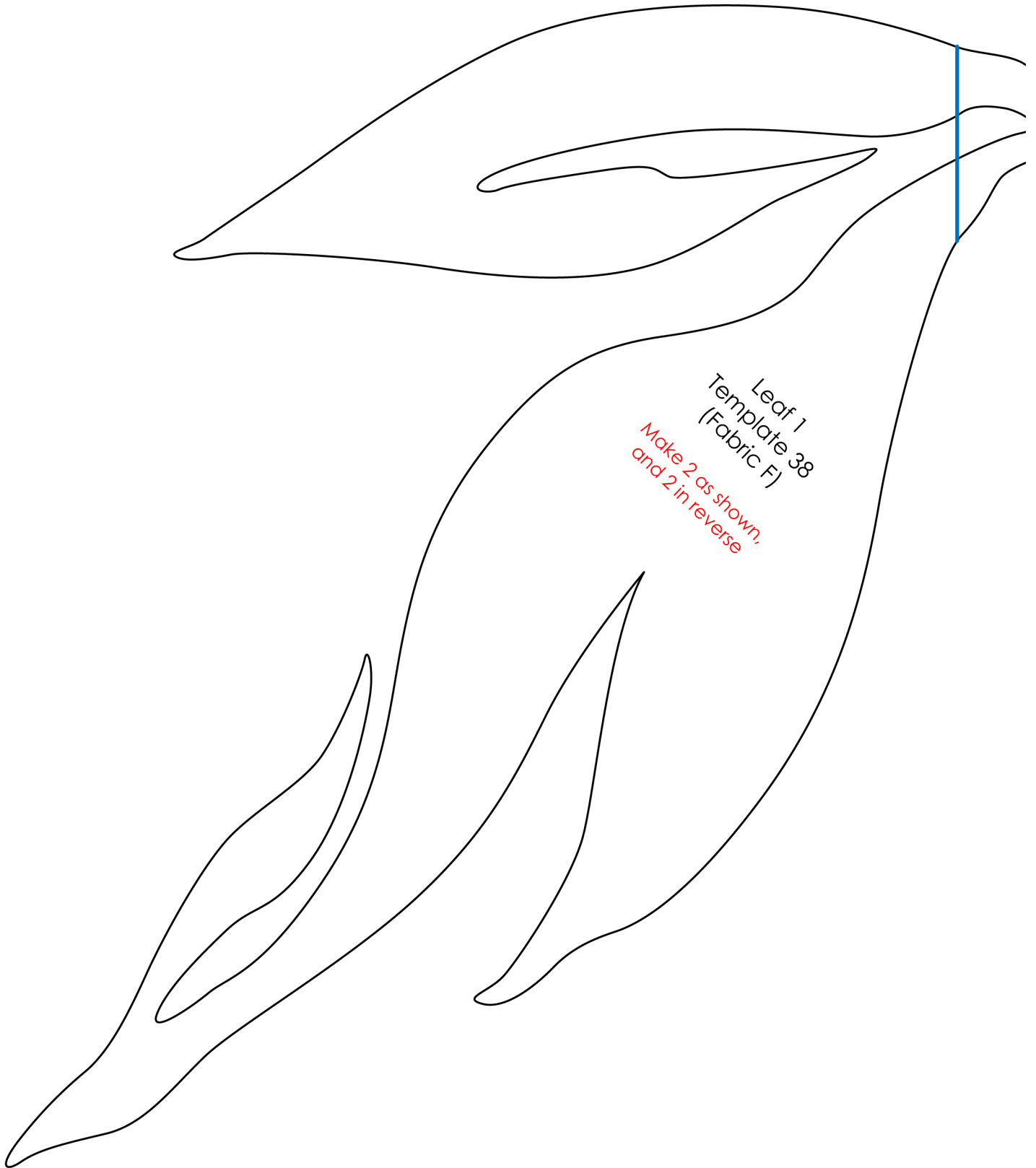


1" box for  
scale



Make 4 as shown,  
and 4 in reverse





1" box for  
scale

Match this blue line to the blue line on the template found on page 15. Tape together to form a single template.

1" box for  
scale

Template 38

*Make 2 as shown, and 2 in reverse*

Leaf 7 Template 44 (Fabric F)

Match this green line to the green line on the other portion of Template 44 found on this page. Tape together to form a single template.



