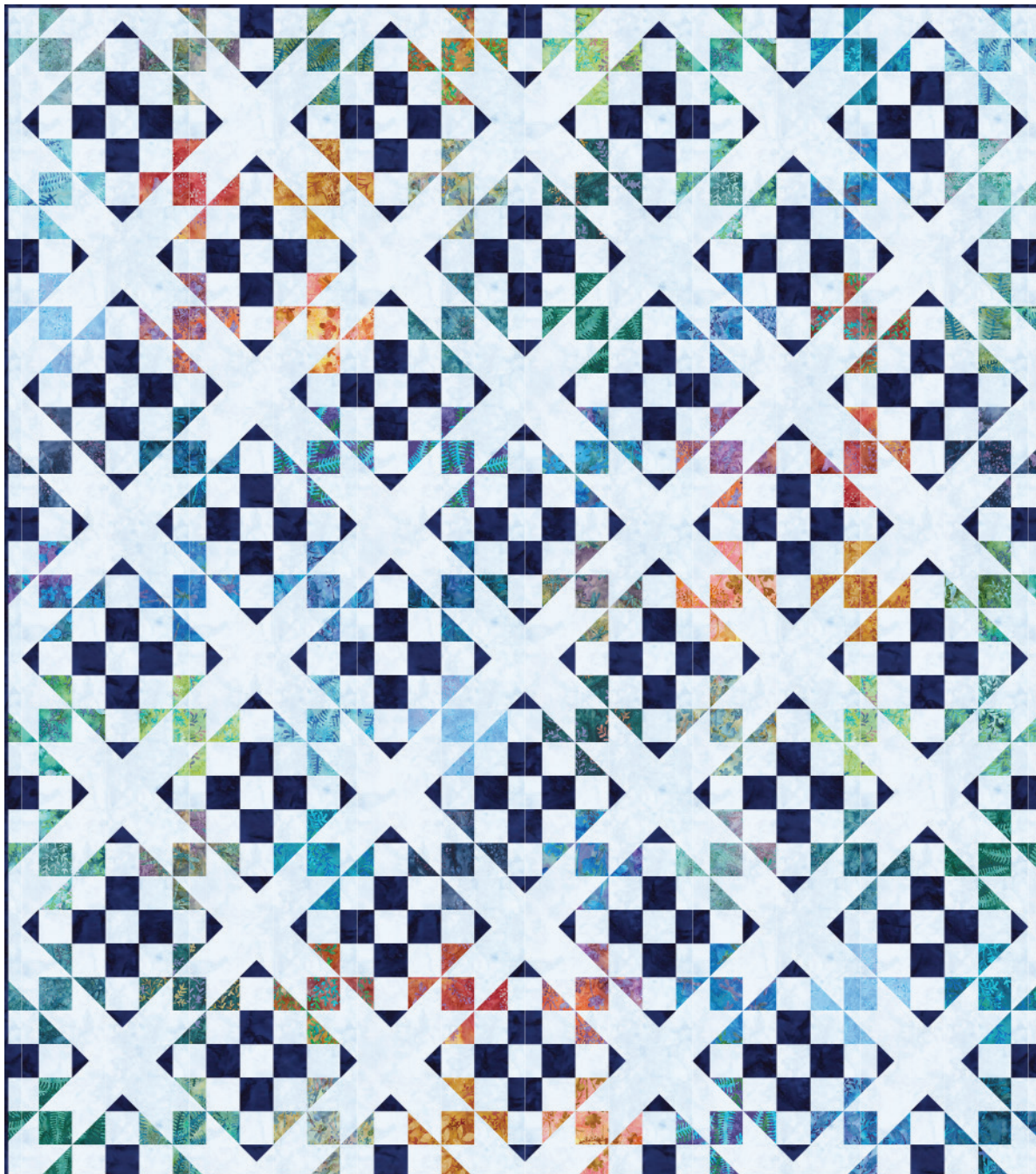


# SUNRISE LOOKOUT

Designed by Elise Lea for RK  
[www.robertkaufman.com](http://www.robertkaufman.com)

Featuring ARTISAN  
BATIKS

Sunrise Vista 



Finished quilt measures: 62" x 72"





Difficulty Rating: **Intermediate**

**ROBERT KAUFMAN**  
F A B R I C S

For questions about this pattern, please email [Patterns@RobertKaufman.com](mailto:Patterns@RobertKaufman.com).

## Fabric and Supplies Needed

*Fabric amounts based on yardage that is 42" wide.*

Color	Fabric	Name/SKU	Yardage	Color	Fabric	Name/SKU	Yardage
		TEN-823-42 SUNRISE VISTA	one Ten Square Pack		B	AMD-7000-72 COBALT	1 yard
	A	AMD-7000-65 POWDER	3-2/3 yards		Binding*	AMD-7000-72 COBALT <small>*Also used for Fabric B</small>	5/8 yard
Copyright 2020, Robert Kaufman For individual use only - Not for resale				You will also need: 4 yards for backing			

## Notes Before You Begin

- Read through all of the instructions before beginning.
- All of the seam allowances are 1/4" unless otherwise noted.
- Press seam allowances open unless otherwise noted.
- Width of fabric (WOF) is equal to at least 42" wide.
- Right sides together has been abbreviated to RST.
- Remember to measure twice and cut once!

## Cutting Instructions

### From thirty of the Ten Square squares, cut:

four 3" squares for the HSTs  
two 2-1/2" squares

### From the remaining twelve Ten Square squares, cut:

two 3" squares for the HSTs  
one 2-1/2" square

### From Fabric A, cut:

three 3-1/2" x WOF strips. Subcut:  
     thirty-one 3-1/2" squares for the Half-QSTs  
 fifteen 3" x WOF strips. Subcut:  
     two hundred six 3" squares for the HSTs and Half-QSTs  
 thirty 2-1/2" x WOF strips. Subcut:  
     four hundred seventy-one 2-1/2" squares

**From Fabric B, cut:**

three 3-1/2" x WOF strips. Subcut:

thirty-one 3-1/2" squares for the Half-QSTs

eight 2-1/2" x WOF strips. Subcut:

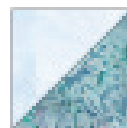
one hundred twenty-seven 2-1/2" squares

**From the Binding Fabric, cut:**

seven 2-1/2" x WOF strips

## Assemble the Half-Square Triangles (HSTs)

**Step 1:** Pair a 3" Fabric A square with a 3" square from one of the Ten Square prints, RST. Mark a diagonal line on the wrong side of one square. Sew 1/4" away from both sides of the marked line. Cut on the marked line, creating two half-square triangles (HSTs). Press toward the darker fabric. Trim to 2-1/2" square. Repeat with all remaining 3" print squares from the Ten Square pack to make a total of two hundred eighty-eight HSTs.



## Assemble the Half Quarter-Square Triangles (Half-QSTs)

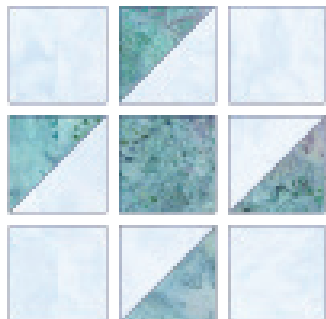
**Step 2:** Pair a 3-1/2" Fabric A square with a 3-1/2" square Fabric B, RST. Mark a diagonal line on the wrong side of one square. Sew 1/4" away from both sides of the marked line. Cut on the marked line, creating two half-square triangles (HSTs). Press toward the darker fabric. Trim to 3" square. Repeat with all remaining 3-1/2" Fabric A and Fabric B squares to make a total of sixty-two A/B HSTs.



**Step 3:** Pair one Step 2 HSTs with a 3" Fabric A square, RST. Mark a diagonal line perpendicular to the HST's seam line on the wrong side of the Fabric A square. Sew 1/4" away from both sides of the marked line. Cut on the marked line, creating two Half Quarter-Square Triangles (Half-QSTs). Press toward the seam open or to one side. Trim to 2-1/2" square. Repeat with all of the Step 2 HSTs to make a total of one hundred twenty-four Half-QSTs. Note: one unit will not be used in the quilt.



## Assemble the Block Units

**Step 4:** Gather:

four Fabric A squares

one 2-1/2" print square

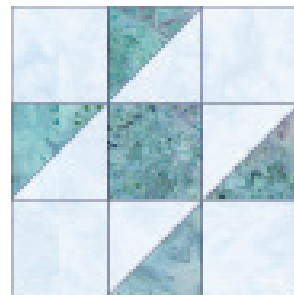
four HSTs that match the fabric in the 2-1/2" print square

Arrange the units into three rows of three. Note the fabric placement and block orientation in the Block Assembly Diagram.

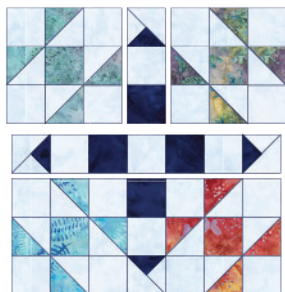
**Step 5:** Sew the units together to form the rows. Press the seams away from the HSTs.

**Step 6:** Sew the rows together, nesting the seams and pressing the seams to one side to form the block unit.

The unit should measure 6-1/2" square. Repeat to make a total of seventy-two Block Units, each from a matching set of prints.



## Assemble the Blocks and Partial Blocks



**Step 7:** Gather:

- four Block Units from Step 6 (in four different prints)
- four Half-QSTs
- five Fabric A squares
- four Fabric B squares

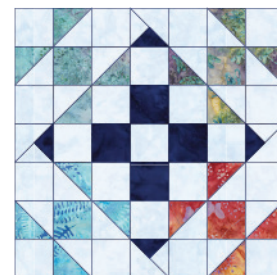
Arrange the units as shown. Note the fabric placement and block orientation in the Block Assembly Diagram.

**Step 8:** Sew the 2-1/2" Squares and Half-QSTs together as shown. Press the seams toward the darker fabric.

**Step 9:** Sew the squares together to form the rows and columns as shown. Press the seams to one side. Sew the upper section together to form a row and press. Sew the lower section together to form a row and press.

**Step 10:** Sew the three rows together, nesting the seams and pressing the seams to one side to form the Block.

The Block should measure 14-1/2" square. Repeat to make a total of sixteen Blocks.



**Step 11:** Gather:

- two Block Units from Step 6 (in two different prints)
- one Half-QST
- one Fabric A square
- one Fabric B square

Sew together to form the Partial Block, as shown. Press. The Partial Block should measure 6-1/2" x 14-1/2". Repeat to make a total of four Partial Blocks.





## Assemble the Sashing Units



### Step 12: Gather:

two Fabric B squares  
three Fabric A squares  
two Half-QSTs

Arrange the units into one row to form the Sashing Unit. Note the fabric placement and block orientation in the Block Assembly Diagram.

**Step 13:** Sew the squares together to form the row. Press the seams to one side.

Repeat to make a total of twenty-eight Sashing Units.



### Step 14: Gather:

one Fabric B square  
one Fabric A square  
one Half-QST

Arrange the units into one row to form the Partial Sashing Unit. Note the fabric placement and block orientation in the Block Assembly Diagram.

**Step 15:** Sew the squares together to form the row. Press the seams to one side.

Repeat to make a total of three Partial Sashing Units.

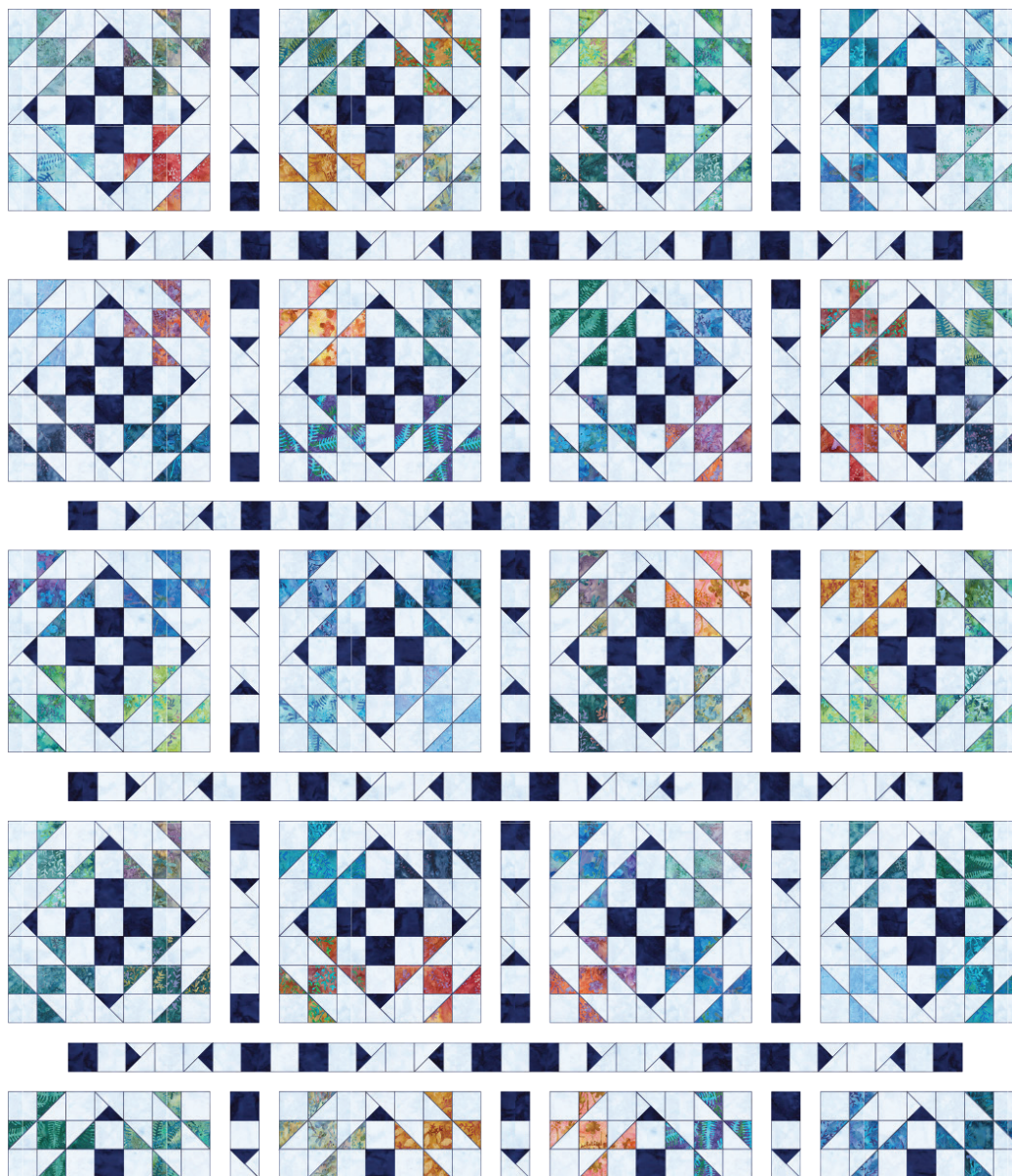
### Step 16: Gather:

four Sashing Units from Step 14  
three Fabric A squares

Arrange the units into one row to form the Row Sashing Unit. Sew together and press. Repeat to make four Row Sashing Units like this.



## Assemble the Quilt



**Step 17:** Arrange the Blocks together as indicated in the Quilt Assembly Diagram. Sew each row together, using Sashing Units between each block. Press seams toward the sashing. Repeat to make four block rows.

**Step 18:** Arrange the Partial Blocks together as indicated in the Quilt Assembly Diagram. Sew each row together, using Partial Sashing Units between each block. Press seams toward the sashing. Repeat to make one Partial Block row.

**Step 19:** Sew the sashing and block rows together, pinning and nesting the seams. Press seams open or to the sashing.

Your quilt top is complete! Baste, quilt, bind and enjoy!

This pattern may be used for personal purposes only and may not be reproduced in any form without the express permission from Robert Kaufman Fabrics. This pattern is not for resale. All patterns, unless otherwise attributed, are © Robert Kaufman Co., Inc. 2005-2020. All rights reserved.