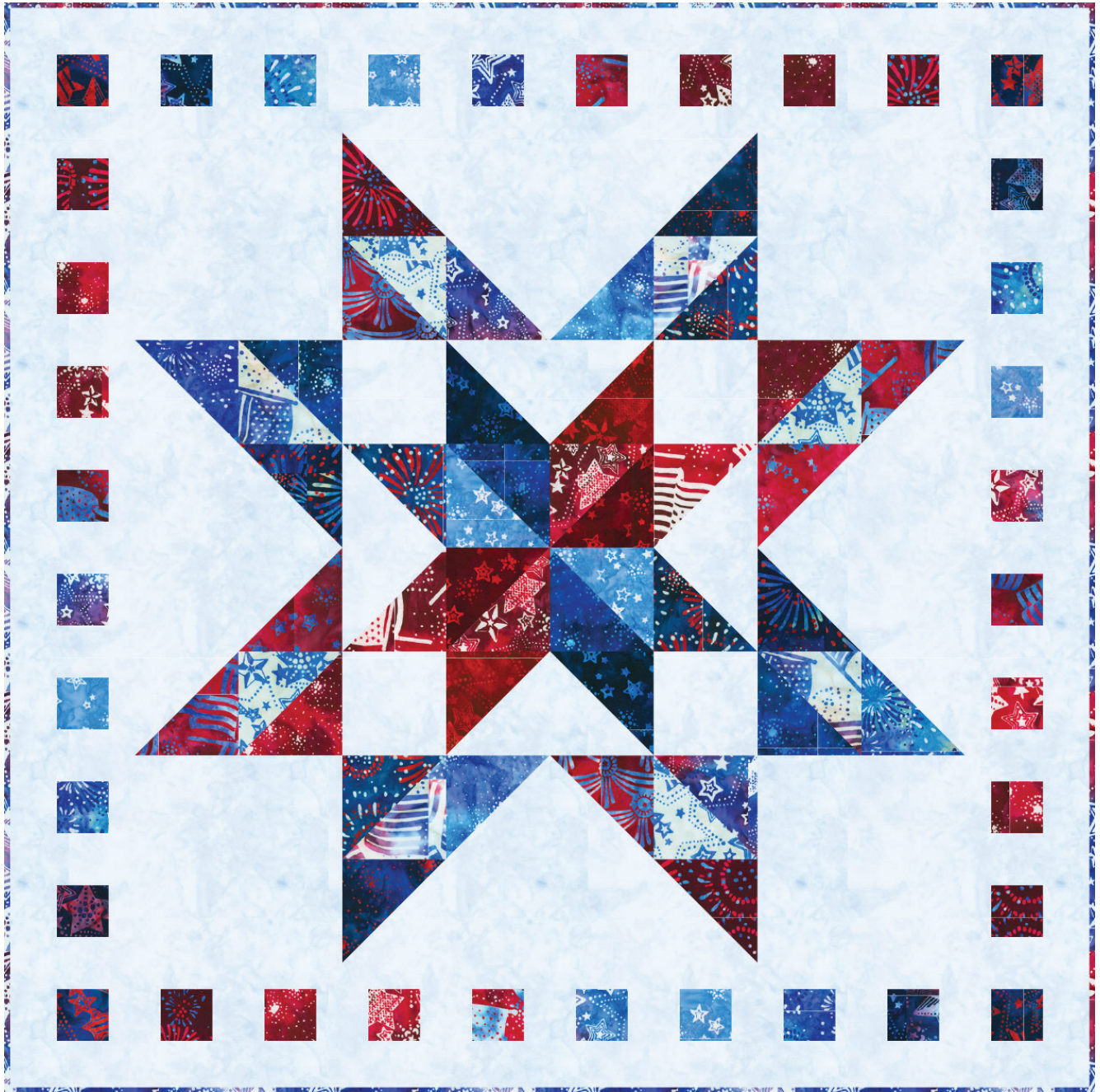


SPARKLING STAR

Designed by Elise Lea for RK
www.robertkaufman.com

Featuring ARTISAN
BATIKS

Liberty 



Finished quilt measures: 42" x 42"




Difficulty Rating: **Intermediate**

ROBERTKAUFMAN
F A B R I C S

For questions about this pattern, please email Patterns@RobertKaufman.com.

Fabric and Supplies Needed

Fabric amounts based on yardage that is 42" wide.

Color	Fabric	Name/SKU	Yardage	Color	Fabric	Name/SKU	Yardage
		CHS-1116-42 LIBERTY	one charm pack		Binding*	SRK-21906-202 AMERICANA <small>*Also included in the charm pack</small>	3/8 yard
		AMD-7000-65 POWDER	1-3/4 yards	<p>You will also need: 2-5/6 yards for backing</p>			
<p>Copyright 2023, Robert Kaufman For individual use only - Not for resale</p>							

Notes Before You Begin

- Read through all of the instructions before beginning.
- All of the seam allowances are 1/4" unless otherwise noted.
- Press seam allowances open unless otherwise noted.
- Width of fabric (WOF) is equal to at least 42" wide.
- Right sides together has been abbreviated to RST.
- Remember to measure twice and cut once!

Cutting Instructions

From the Charm Pack:

Select twenty-four squares for the HSTs.

Select seven squares for the pieced border. *Note: More can be used for greater variety.*

Cut each selected square in half vertically and horizontally to yield 2-1/2" squares.

A total of twenty-six 2-1/2" squares are needed to complete the pieced border.

From Fabric A, cut:

one 8-1/2" x WOF strip. Subcut:

four 8-1/2" squares.

three 5" x WOF strips. Subcut:

twenty-four 5" squares.

two 4-1/2" x WOF strips. Subcut:

four 4-1/2" x 8-1/2" rectangles.

four 4-1/2" squares.

seven 2-1/2" x WOF strips. Subcut:

two 2-1/2" x 42-1/2" outer top/bottom borders.

Note: If your fabric is less than 42-1/2" of usable width, piece four strips together before cutting the outer border strips.

two 2-1/2" x 38-1/2" outer side borders.

thirty-six 2-1/2" squares for the pieced border.

four 1-1/2" x WOF strips.

two 1-1/2" x 32-1/2" inner side borders.

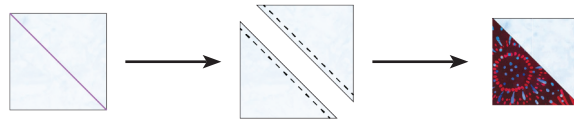
two 1-1/2" x 34-1/2" inner top/bottom borders.

From the Binding Fabric, cut:

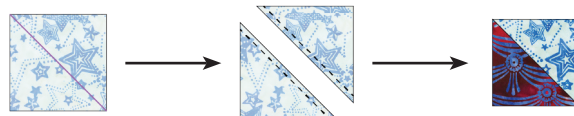
five 2-1/2" x WOF strips.

Assemble the Half-Square Triangles (HSTs)

Step 1: Pair a 5" Fabric A square with a 5" charm square, RST. Mark a diagonal line on the wrong side of one square. Sew 1/4" away from both sides of the marked line. Cut on the marked line creating two half-square triangles (HSTs). Press toward the darker fabric. Trim to 4-1/2" square. Repeat to make twenty-four HSTs with Fabric A on one half.



Step 2: Pair two 5" charm squares, RST. Mark a diagonal line on the wrong side of one square. Sew 1/4" away from both sides of the marked line. Cut on the marked line creating two half-square triangles (HSTs). Press toward the darker fabric. Trim to 4-1/2" square. Repeat to make twelve HSTs with fabrics from charm squares on both halves.



Assemble the Center Pinwheel Unit

Step 3: Gather four HSTs from Step 2. Arrange the HSTs in two rows of two to form a pinwheel. Sew the HSTs together to form rows and press the seams in opposite directions. Nest the seams and sew the rows together. Press.



Assemble the Side Center Units

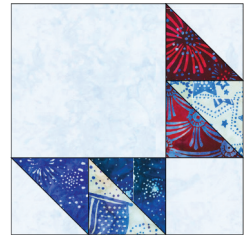
Step 4: Gather four HSTs from Step 1 and one 4-1/2" x 8-1/2" Fabric A rectangle. Arrange the HSTs in two rows of two to form flying geese. Sew the HSTs together to form the flying geese, then press the seams in opposite directions. Sew the two flying geese together, then add the Fabric A rectangle to the top of the unit. Press. Make four Side Center Units.



Assemble the Corner Units

Step 5: Gather two HSTs from Step 1, two HSTs from Step 2, one 4-1/2" Fabric A square, and one 8-1/2" Fabric A square.

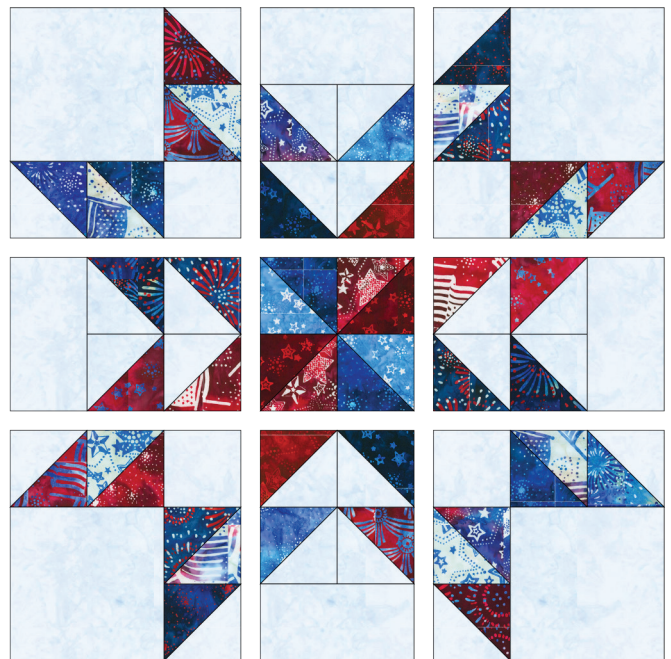
Refer to the diagram to the right to sew a Step 1 HST to the top of a Step 2 HST together to create a unit, then press. Refer to the diagram again and sew a Step 1 HST to the left edge of a Step 2 HST, then press.



Arrange the two units you created and the two Fabric A squares in two rows of two. Sew the units together to form rows, then press towards the Fabric A squares. Nest the seams and sew the rows together. Press. Make four Corner Units.

Assemble the Quilt Center

Step 6: Gather the Center Pinwheel Unit, four Side Center Units, and four Corner Units. Arrange the units in three rows of three to form the center star. Sew the units together to form rows. Press the seams of each row towards the Side Center Units. Nest the seams and sew the rows together. Press.



Assemble the Pieced Borders

Step 7: Gather nine 2-1/2" Fabric A squares and eight 2-1/2" squares cut from charm squares. Alternate between Fabric A squares and charm squares to form a row. Sew the squares together to form the row, then press the seams away from the Fabric A squares. Make two Side Pieced Borders.



Step 8: Gather nine 2-1/2" Fabric A squares and ten 2-1/2" squares cut from charm squares. Alternate between charm squares and Fabric A squares to form a row. Sew the squares together to form the row, then press the seams away from the Fabric A squares. Make two Top/Bottom Pieced Borders.



Add the Borders to the Quilt Top

Step 9: Sew the side inner borders to the sides of the quilt center. Press toward the borders. Sew the top and bottom inner borders to the quilt center. Press toward the borders.

Step 10: Sew the side pieced borders to the sides of the quilt center. Press toward the inner borders. Sew the top and bottom pieced borders to the quilt center. Press toward the inner borders.

Step 11: Sew the side outer borders to the sides of the quilt center. Press toward the borders. Sew the top and bottom outer borders to the quilt center. Press toward the borders.



Your quilt top is complete!
Baste, quilt, bind, and enjoy!

This pattern may be used for personal purposes only and may not be reproduced in any form without the express permission from Robert Kaufman Fabrics. This pattern is not for resale. All patterns, unless otherwise attributed, are © Robert Kaufman Co., Inc. 2005-2023. All rights reserved.