

SNOW PALS

Designed by Ariga Mahmoudlou for RK Featuring
www.robertkaufman.com

Snow Pals



Finished quilt measures: 56" x 73-1/2"









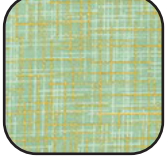

Difficulty Rating: **Beginner**

ROBERTKAUFMAN
F A B R I C S

For questions about this pattern, please email Patterns@RobertKaufman.com.

Fabric and Supplies Needed

Fabric amounts based on yardage that is 42" wide.

| Color | Fabric | Name/SKU | Yardage | Color | Fabric | Name/SKU | Yardage |
|-------------------------------------------------------------------------------------|--------|---------------------------|------------------------------|-------------------------------------------------------------------------------------|-------------------------------------------------------------------------|---------------------------|----------|
|  | A | AZND-19489-223 HOLIDAY | 2/3 yard (one full panel) |  | F | ETJ-9864-47 GRASS | 1/4 yard |
|  | B | SRKM-14476-91 CRIMSON | 1/4 yard |  | G | SRKM-14476-29 HUNTER | 1/4 yard |
|  | C | AZND-19498-223 HOLIDAY | 1/3 yard |  | H | ETJ-9864-167 CHOCOLATE | 1/8 yard |
|  | D | ETJ-9864-87 SNOW | 2 yards |  | I | AZND-19497-223 HOLIDAY | 5/8 yard |
|  | E | SRKM-14476-44 FOREST | 1/4 yard |  | Binding* AZND-19498-223 HOLIDAY <i>*Also used for Fabric C</i> | 1/2 yard | |

Copyright 2020, Robert Kaufman
For individual use only - Not for resale

You will also need:
3-5/8 yards for backing

Notes Before You Begin

- Read through all of the instructions before beginning.
- All of the seam allowances are 1/4" unless otherwise noted.
- Press seam allowances open unless otherwise noted.
- Width of fabric (WOF) is equal to at least 42" wide.
- Right sides together has been abbreviated to RST.
- Remember to measure twice and cut once!

Cutting Instructions

From Fabric A, fussy cut:

one 24-1/2" x 42" center panel

From Fabric B, cut:

four 1-1/2" x WOF strips. Sew together, end-to-end, then cut:

two 1-1/2" x 26-1/2" top/bottom Border 1 strips

two 1-1/2" x 42" side Border 1 strips

From Fabric C, cut:

four 2-1/2" x WOF strips. Sew together, end-to-end, then cut:

two 2-1/2" x 30-1/2" top/bottom Border 2 strips

two 2-1/2" x 44" side Border 2 strips

From Fabric D, cut:

one 4" x WOF strip. Subcut

two 4" x 6-1/2" rectangles for Border 4

thirteen 2-1/2" x WOF strips. Sew together, end-to-end, then cut:

two 2-1/2" x 34-1/2" top/bottom Border 3 strips

two 2-1/2" x 48" side Border 3 strips

two 2-1/2" x 50-1/2" top/bottom Border 5 strips

two 2-1/2" x 64" side Border 5 strips

twenty-two 2-1/2" x 6-1/2" rectangles for Border 4

fifteen 2" x WOF strips. Subcut:

one hundred ninety-two 2" squares for the Tree Blocks

forty-eight 2" x 1-1/4" rectangles for the Tree Blocks

forty-eight 2" x 2-3/4" rectangles for the Tree Blocks

From Fabric E, cut:

three 2" x WOF strips. Subcut:

twelve 2" x 6-1/2" rectangles for the Tree Blocks

twelve 2" x 3-1/2" rectangles for the Tree Blocks

From Fabric F, cut:

three 2" x WOF strips. Subcut:

twenty-four 2" x 5" rectangles for the Tree Blocks

From Fabric G, cut:

three 2" x WOF strips. Subcut:

twelve 2" x 6-1/2" rectangles for the Tree Blocks

twelve 2" x 3-1/2" rectangles for the Tree Blocks

From Fabric H, cut:

two 2" x WOF strips. Subcut:

twenty-four 2" squares for the Tree Blocks

From Fabric I, cut:

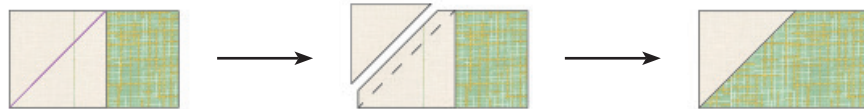
six 3-1/2" x WOF strips. Sew together, end-to-end, then cut:
two 3-1/2" x 56-1/2" top/bottom Border 6 strips
two 3-1/2" x 68" side Border 6 strips

From the Binding Fabric, cut:

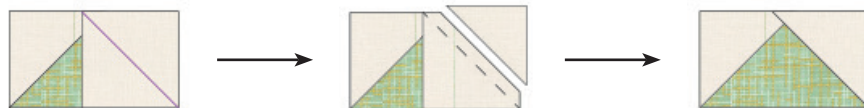
seven 2-1/2" x WOF strips

Assemble the Tree Blocks

Step 1: Place a 2" Fabric D square RST at one end of a 2" x 3-1/2" Fabric E rectangle. Mark a diagonal line on the wrong side of the square, as shown. Sew on the marked line and trim away the excess fabric, leaving a 1/4" seam allowance. Press toward the triangle.



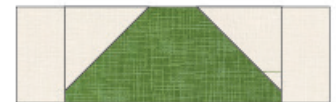
Step 2: Repeat Step 1 at the remaining end of the rectangle. The resulting flying geese block should measure 2" x 3-1/2".



Step 3: Repeat with all remaining 2" x 3-1/2" Fabric E and Fabric G rectangles. Sew a 2" x 2" square to each short end of the units and press.



Step 4: Repeat the process from Steps 1 and 2 with all 2" x 5" Fabric F rectangles. Sew a 2" x 1-1/4" Fabric D rectangle to each short end of the units and press.

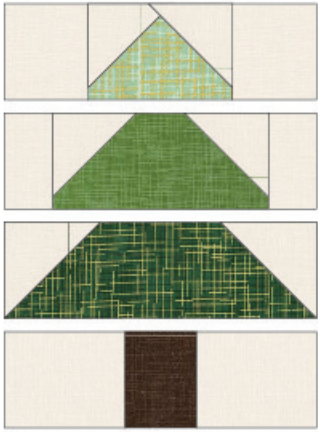


Step 5: Repeat the process from Steps 1 and 2 with all 2" x 6-1/2" Fabric E and Fabric F rectangles.



Step 6: Sew a 2" x 2-3/4" Fabric D rectangle top opposite edges of a Fabric H square. Press. Repeat to make twenty-four units like this.





Step 7: Gather:

- one completed Step 3 unit, From Fabric E
- one completed Step 4 unit
- one completed Step 5 unit, From Fabric G
- one completed Step 6 unit

Arrange the units into four rows. Note the fabric placement and block orientation in the Block Assembly Diagram.

Step 8: Sew the rows together, pressing the seams to one side to form the block. The Block should measure 6-1/2" square. Repeat to make twelve Tree Blocks with this fabric placement.



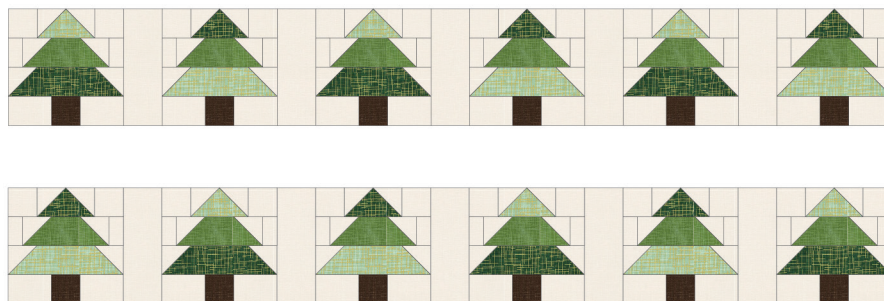
Step 9: Repeat Steps 7 and 8 to make twelve Tree Blocks with the remaining units, in this fabric placement.

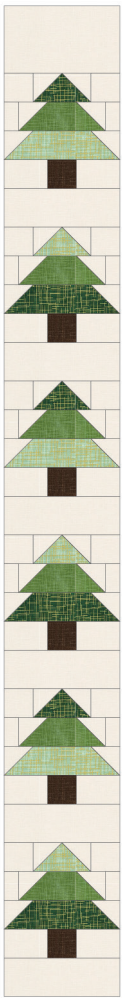


Step 10: Gather:

- three completed Tree Blocks from Step 8
- three completed Tree Blocks from Step 9
- five 2-1/2" x 6-1/2" Fabric D rectangles

Sew together, as shown, to form the top Border 4 unit. Press. Repeat to make the bottom Border 4 unit.

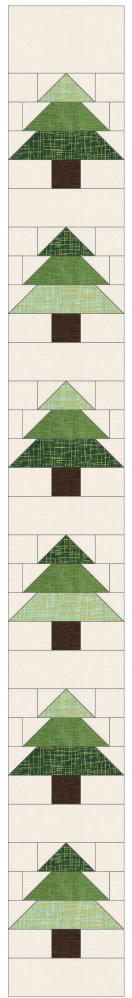




Step 11: Gather:

- three completed Tree Blocks from Step 8
- three completed Tree Blocks from Step 9
- six 2-1/2" x 6-1/2" Fabric D rectangles
- one 4" x 6-1/2" Fabric D rectangle

Sew together, as shown, to form the left Border 4 unit. Press. Repeat to make the right Border 4 unit, noting the differences in the tree placement shown in the diagram.



Assemble the Quilt

Step 12: Sew the side Border 1 pieces to the sides of the Fabric A quilt center. Press toward the borders. Sew the top and bottom Border 1 pieces to the quilt center. Press toward the borders.

Step 13: Sew the side Border 2 pieces to the sides of the quilt center. Press toward the borders. Sew the top and bottom Border 2 pieces to the quilt center. Press toward the borders.

Step 14: Sew the side Border 3 pieces to the sides of the quilt center. Press toward the borders. Sew the top and bottom Border 3 pieces to the quilt center. Press toward the borders.

Step 15: Sew the side Border 4 pieces to the sides of the quilt center. Press toward the borders. Sew the top and bottom Border 4 pieces to the quilt center. Press toward the borders.

Step 16: Sew the side Border 5 pieces to the sides of the quilt center. Press toward the borders. Sew the top and bottom Border 5 pieces to the quilt center. Press toward the borders.



Step 17: Sew the side Border 6 pieces to the sides of the quilt center. Press toward the borders. Sew the top and bottom Border 6 pieces to the quilt center. Press toward the borders.

Your quilt top is complete! Baste, quilt, bind and enjoy!

This pattern may be used for personal purposes only and may not be reproduced in any form without the express permission from Robert Kaufman Fabrics. This pattern is not for resale. All patterns, unless otherwise attributed, are © Robert Kaufman Co., Inc. 2005-2020. All rights reserved.