

Snappy Mani Pouch

Designed by Noodlehead

www.noodle-head.com

Featuring

RE MIX
BY Ann Kelle




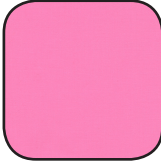


Finished project measures: 8" x 5" x 1"

Pattern Level: Experienced Intermediate

"I know the ropes and would like to test my skills!"

ROBERT KAUFMAN
F A B R I C S

Fabric Needed

Color	Fabric	Name/SKU	Yardage	Color	Fabric	Name/SKU	Yardage
	A	AAK-10395-3 RED	1 FQ		C	K001-1062 CANDY PINK	1 FQ
	B	AAK-12136-96 BLUSH	1 FQ		D	E064-1019 BLACK	1 FQ
1 FQ (Fat Quarter) = 18" tall x 22" wide				For individual use only - Not for resale Copyright 2014, Robert Kaufman			

Supplies Needed

- 9" x 14" interfacing for exterior (Annie's Soft & Stable/fusible fleece/cotton canvas)**
- 1/2 yard woven fusible interfacing for lining (Pellon SF101)
- One 10" plastic coil zipper or longer
- 13" piece of 1/4" elastic
- Two (size 24) snaps (a 5" length of 3/4" wide hook & loop tape could be substituted)

****For the interfacing on the exterior piece I recommend a few options:**

I used primarily Annie's Soft & Stable, I had some scrap pieces on hand and found it to give the wallet a nice cushion and stability. If you don't have any, I also used fusible fleece as a substitute with similar results. You could also try fusing on a piece of SF101 to the wrong side of the exterior piece, then baste a layer of cotton canvas.

Feel free to make the exterior patchwork or even quilt the exterior, lots of fun options!

Notes Before You Begin

- Please read through all of the instructions before beginning.
- Print one copy of Lining A pattern piece at 100%.
- All of the seam allowances are 1/2" unless otherwise noted.
- Press all seam allowances open after each seam is sewn, unless otherwise noted.
- RST= Right Sides Together and WST= Wrong Sides Together.
- Remember to measure twice and cut once!

Cutting Instructions

Fabric A

- Cut one rectangle 9" x 14" for Exterior (see diagram at right for directional fabrics).
 - Use the Lining A pattern piece to round the top edge.
- Cut one rectangle 2" x 9" for Binder Piece.

Fabric B

- Cut one rectangle 6" x 15" for Nail Polish Divider.

Fabric C

- Cut two rectangles 1-1/2" x 9" for Zipper Top.
- Cut two rectangles 4-1/2" x 9" for Zipper Bottom.

Fabric D

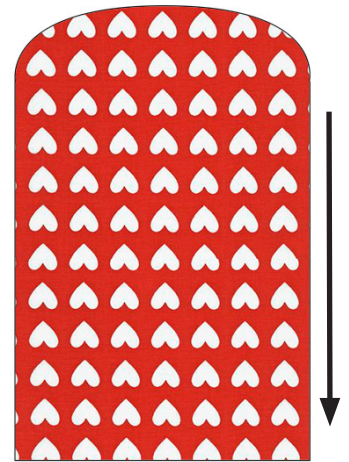
- Cut one using the Lining A pattern piece for Lining A.
- Cut one rectangle 5-1/2" x 9" for Lining B.

Exterior Interfacing

- Cut one rectangle 9" x 14" for Exterior Interfacing
 - Use the Lining A pattern piece to round the top (9") edge.

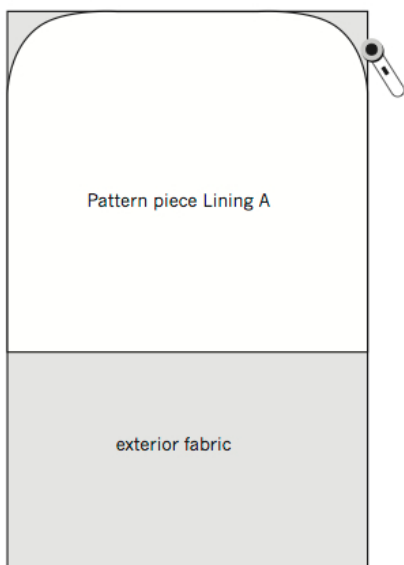
Lining Interfacing

- Cut one using the Lining A pattern piece for Lining A Interfacing.
- Cut one rectangle 5-1/2" x 9" for Lining B Interfacing.



If using a directional print for the Fabric A exterior, print direction will be facing down.

Prepping Instructions

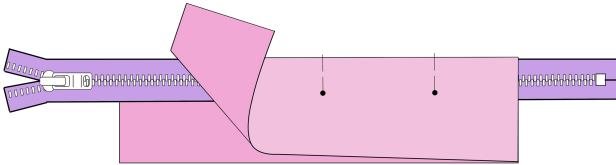


- Apply interfacing to lining pieces and binding piece.
- Cut exterior pieces using Lining A pattern piece and measurements from cutting list.
- Baste or fuse interfacing to wrong side of exterior

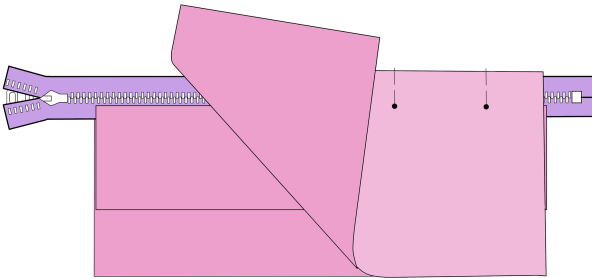
Assembly Instructions

Step 1: Assemble Zipper Pocket

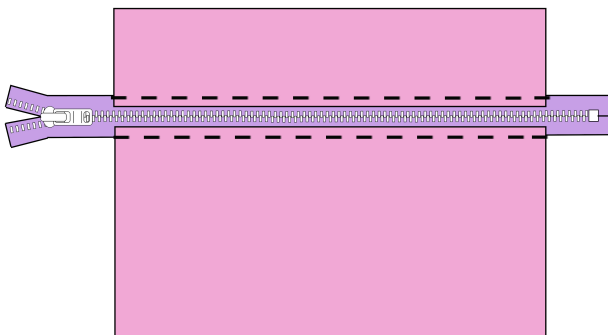
1. Place one Zipper Top right side up.
Lay zipper facing up with pull on left,
aligning edges of zipper tape with long
edge of Zipper Top.
Place remaining Zipper Top right side down
on top. Pin.
Sew using a 1/4" seam allowance.
Flip so the strips are WST. Press.



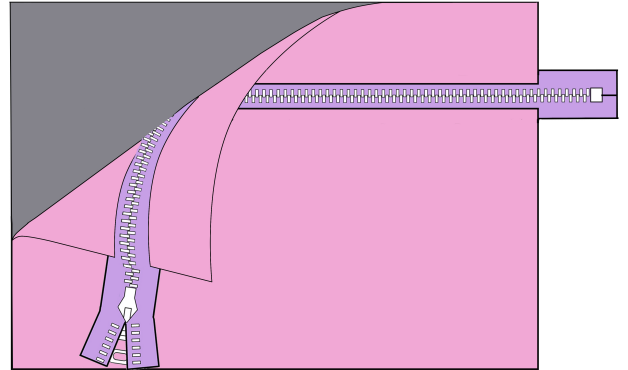
2. Topstitch along the folded edge.
3. Place a Zipper Bottom right side up.
Place zipper (teeth facing down) with pull on
right.
Align to edge of zipper tape.
Place remaining Zipper Bottom right
side down on top, aligned with zipper tape.
Pin. Sew using 1/4" seam allowance.
Flip so the pieces are WST. Press.



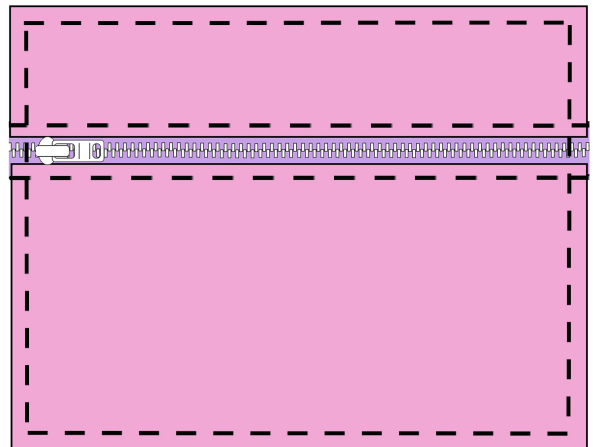
4. Topstitch along folded edge next to zipper
teeth, on both sides of zipper.
Open zipper halfway.



5. Trim assembled zipper panel to size of
Lining B piece as necessary.
With Lining B piece right side up, baste
assembled zipper panel on top along all
edges using a 1/4" seam allowance.



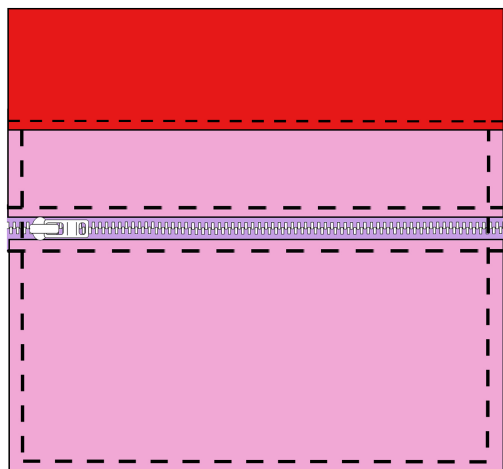
6. Trim off any excess zipper tape at sides.



7. Sew Binder Piece piece to top long edge.
Press.



8. Topstitch along Binder Piece.

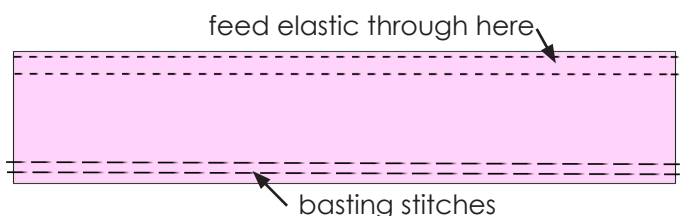


Step 2: Assemble Nail Polish Divider

1. Fold Divider in half lengthwise, WST.
Press.
Topstitch along folded edge and sew again 1/2" from folded edge.
This will make the elastic casing.

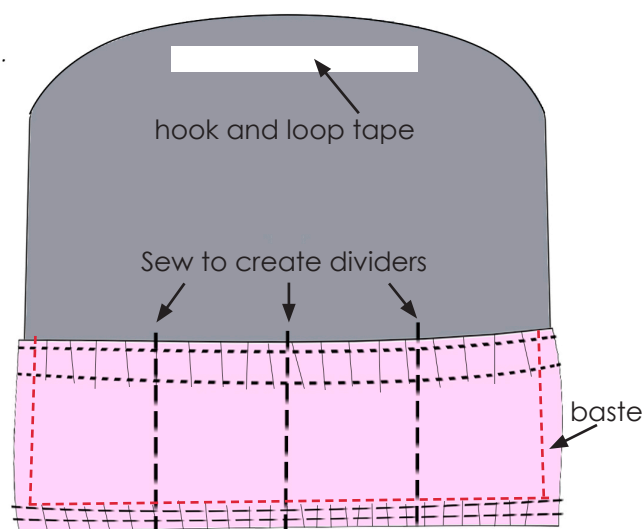


2. Baste two rows of stitching along bottom raw edge 1/4" and 3/8" away from edge.
Feed elastic through casing using safety pin.
When the elastic is pulled through, secure edge to divider by sewing through all layers.
Stretch elastic through to opposite side and pull so that the length of the divider is about 9".
Secure this side of elastic by sewing through all layers at edge.
Trim excess elastic.
3. Pull bobbin thread of basting stitches to gather bottom of divider.
Gather until it reaches 9" in length.



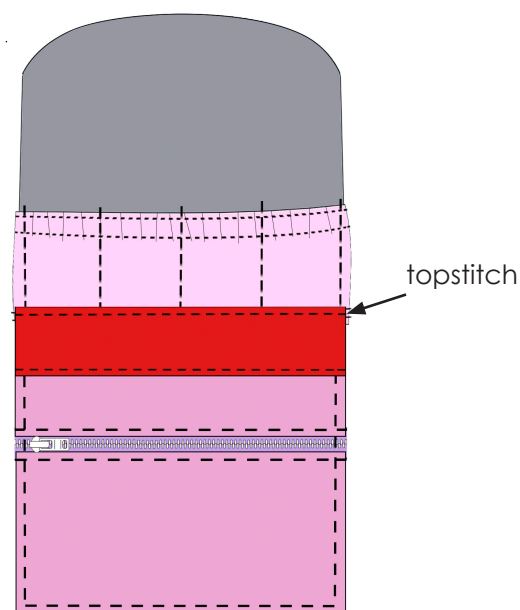
4. Align bottom edge and sides of the Divider with bottom edge and sides of Lining A.
Baste along sides and bottom edge to secure.
With a water soluble pen mark a vertical line 4-1/2" from side to mark center.
Mark vertical lines 2-1/2" from each side.
Stitch along marked lines being sure to backstitch at top of nail polish Divider.

If you're using a hook & loop tape closure place loop side centered and 1" down from raw edge and sew along all four edges.

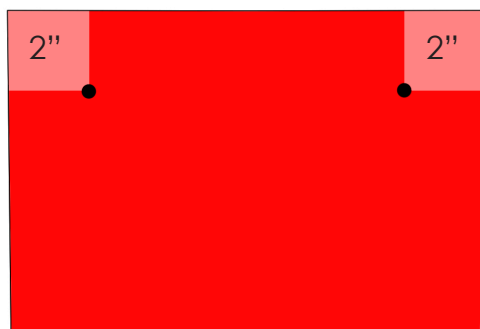


Step 3: Assemble Lining

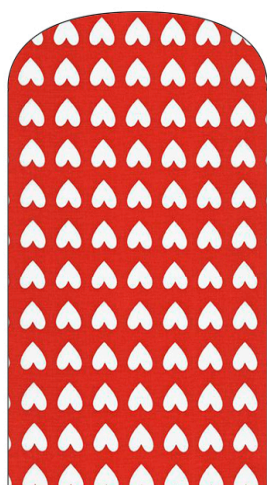
1. Sew Binder Piece to assembled Lining A piece as shown.
Topstitch along binding piece.



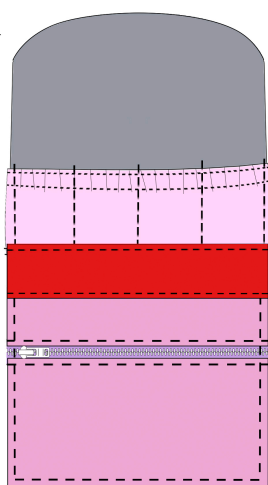
2. Attach snap to exterior: Measure 2" from each bottom corner and mark. Attach male side of snap using marking for placement.
(If you're using hook & loop tape place fuzzy side approximately 1" from raw edge and sew along all four edges.)



You will now have an assembled exterior and lining.



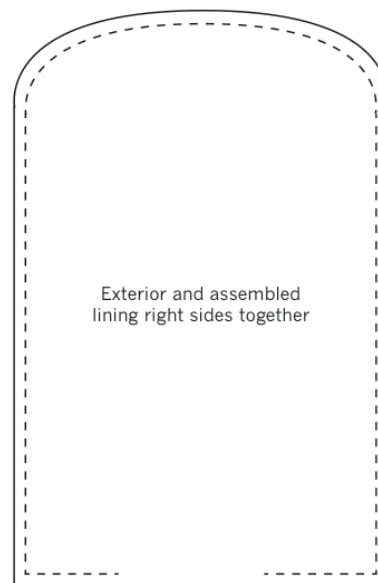
Exterior



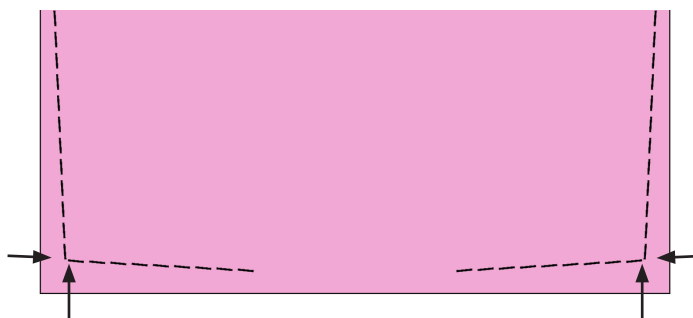
Lining

Step 4: Complete Wallet

1. Place Exterior and Lining RST. Sew along all edges, leaving a 4" opening at the flat bottom.



It helps to use a slightly larger seam allowance as you get to each bottom corner. This will prevent the corners from getting distorted.



2. Clip corners and curves. Turn right side out. Press well. Tuck in raw edges of opening. Slip stitch opening closed by hand with a blind stitch if desired.
3. Topstitch along all edges. You will be sewing over the plastic zipper coils, so go slowly.
4. Fold into wallet. If using snaps, attach cap side of snap to exterior aligning with previously placed snaps.

You're finished!

1 inch test
square

When printed at
100% this box will
measure 1" square

Tape pattern pieces together before
cutting fabric: A to A

A

noodlehead

Snappy Manicure Wallet

Designed by Anna Graham
www.noodle-head.com
for Robert Kaufman Fabrics
All rights reserved. 2014

