

*The* **SLEIGH BELLS**  
**STOCKINGS**

**PDF**  
PATTERN



**EMPTY BOBBIN**  
sewing studio

Craft a new family heirloom this holiday season. Choose just the right style for each member of the family! Pattern includes full size template sheet and color, illustrated instructions.

## Materials:

Based on 44" wide quilting cotton.

	Simple Style	Pieced Style	Polka Dot Style
Main body	½ yard	½ yard	½ yard
Cuff & hanging loop	¼ yard	¼ yard*	¼ yard
Lining & trim	½ yard	½ yard*	½ yard
Assorted 8" x 8" scraps for dots	n/a	n/a	3-5 different fabrics

\* These fabrics are also used for part of the pieced front.

**Other materials:** 20" x 12" piece of batting or fusible fleece. For Polka Dot Style only: ¼ yard of fusible web (such as Heat N Bond Lite- purple package) and one bottle of Fray Check (optional).

**Finished size:** 18" long, 9" wide



Simple Style

Pieced Style

Polka Dot Style

**Making more than one? See chart on page five for fabric requirements for multiple stockings.**

Shea Henderson  
shea@emptybobbinsewing.com  
118 N Conistor Ln, Ste B #267  
Liberty, MO 64068

EmptyBobbinsSewing.com



© 2011 Shea Henderson. All rights reserved. No part of this pattern may be reproduced without written consent of Empty Bobbin Sewing Studio.

# The Sleigh Bells Stockings

Creating family traditions is one of my favorite things about the holidays. Wanting to replace the store bought stockings at our home with something handmade, I created this pattern. My hope is that your holiday mantle shows off your own handmade heirloom stockings this Christmas season.

With three different styles and the ability to change up fabrics, you can easily create a set of stockings your family will treasure for years. Mix and match the fabrics to suit the individual, or use a color theme for the entire set. Just be sure to select fabrics that ward off lumps of coal!

Although this pattern comes with three style options, there is no limit to the number of styles you can create. For example, any favorite quilt block made at 3½" can be used to create the pieced style.

Please consider adding a photo of your finished Stockings to the Empty Bobbin Sewing Studio photo pool on Flickr: <http://www.flickr.com/groups/emptybobbinsewing> or by using the hashtag #sleighbellsstockings on social media sites.

It is wonderful seeing different color choices from the same pattern!

All the best,

Shea Henderson  
shea@emptybobbinsewing.com

*Fabrics used on cover- Left: main body in Green Blue, cuff in Green Yellow, trim in Wasabi. Middle: main body in Green Yellow, cuff in Wasabi, trim in Apple. Right: main body in Green Yellow, cuff in Apple, trim in Green Blue. Additional fabric for dots: Wasabi. All Moda Cross Weave fabrics.*

## General Instructions:

Width of fabric yardage has been abbreviated to WOF. Right sides together has been abbreviated to RST. Pay close attention to seam allowance directions throughout. Set all seams by pressing flat, then pressing open.

## Cutting Instructions:

### For all styles:

- Cut (2) cuffs 5" x 16½" and (1) hanging loop 1½" x 5½" from cuff fabric.
- Cut (1) 1½" x 16½" piece from trim/lining fabric.
- Trace and cut two lining pieces with template. *One should be reversed!*

### For Simple Style:

- select the main color fat quarter (or any 18" x 22" piece) and skip to the middle of page 3.

### For Polka Dot Style:

- select the main color fat quarter (or any 18" x 22" piece) and skip to the top of page 3.

### For Pieced Style:

- cut (1) 1" x WOF strip from cuff fabric
- cut (1) 1" x WOF strip from trim fabric
- cut (4) 1¾" x WOF strips and (1) 12½" x 5" piece from main body fabric.



## The Pieced Style:

1. Sew each 1" strip of cuff fabric between (2) 1¾" strips of main body fabric. Use ¼" seam allowance. Set seams and press open. Repeat with 1" strip of trim fabric. [Figure 1]



Fig. 1

2. Cut each pieced strip into (10) 3½" x 3½" blocks to yield 10 blocks each and a total of 20 blocks. [Figure 2]



Fig. 2

3. Sew blocks together, alternating directions and center fabrics. Make 5 rows of 4 blocks each. Set and press seams open.

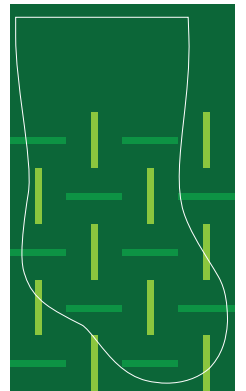


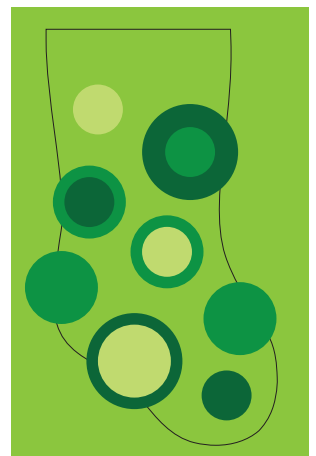
Fig. 3

4. Sew rows together, pinning at each seam. Set seams and press open. Sew 12½" x 5" piece of main body fabric to top of pieced panel. [Figure 3]

5. Move on to Stocking Assembly, middle of page 3. Do not cut out stocking shape yet!

## The Polka Dot Style:

6. Pin or fuse batting to main body fabric. Do not cut out shape yet! Trace stocking template on main stocking fabric. Quilt as desired.
7. Trace dots onto paper side of fusible web from templates as instructed. *Optional: use a circle rotary cutter and cut 2", 3" and 4" circles.*
8. Cut out just outside the lines and iron to fabric scraps selected for dots, following manufacturer's instructions.



9. Cut out circles.
10. Place dots on stocking as illustrated. When pleased with layout, peel paper backing and iron in place.
11. Stitch in place at outermost edge using straight stitch or zig zag. Use Fray Check on all raw edges if desired. Skip to Stocking Assembly, Step 4.

Consider adding embroidery/hand stitching to give extra texture and dimension to the polka dots!

## Stocking Assembly:

12. Trace stocking template onto stocking front using fabric pen. **Do NOT cut out stocking yet.**
13. Baste stocking front to batting (or fuse to fusible fleece). *This is the only piece that will have batting/fusible fleece and quilting.*
14. Quilt as desired.
15. Cut out stocking. Trace and cut stocking back and both lining pieces, paying close attention to when the template should be reversed.
16. Sew stocking front to stocking back, RST, using a  $\frac{1}{2}$ " seam. *Use a seam guide if your machine has one!* Pin liberally. Do not sew the top closed. Clip seam allowance at curves, taking care to not clip into seam. [Figure 4] Trim seam allowance to  $\frac{1}{4}$ ".
17. Repeat Step 5, using lining. Pin liberally. Leave a 3-4" opening on one side for turning later. Back stitch at both ends of this opening. [Figure 5]



Opening left  
for turning

Fig. 4

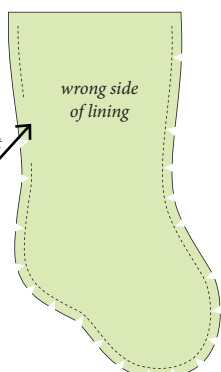


Fig. 5

## Cuff, Trim and Hanging Loop:

18. Sew trim piece between two cuff pieces, using  $\frac{1}{4}$ " seam. Set seams and press open. [Figure 6]
19. Fold in half, long sides together and **RIGHT** sides out. Press a crease along trim. *This crease will come in handy later!* Open and fold in half, short sides together and **WRONG** sides out. [Figure 7] Pin at seams. Sew short end closed with  $\frac{1}{4}$ " seam. Set seam and press open.
20. Bring all raw edges together to form a tube. All seams will be enclosed inside. Press. *The crease from step 4 will help you here!* [Figure 8]
21. Fold  $1\frac{1}{2}$ " x  $5\frac{1}{2}$ " hanging loop fabric in half, long sides and RST. Sew long side closed with  $\frac{1}{4}$ " seam. Use safety pin to turn loop right side out. Press flat, then in half, short sides together.



Fig. 6

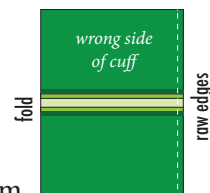


Fig. 7

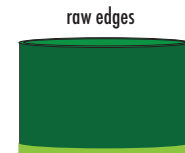
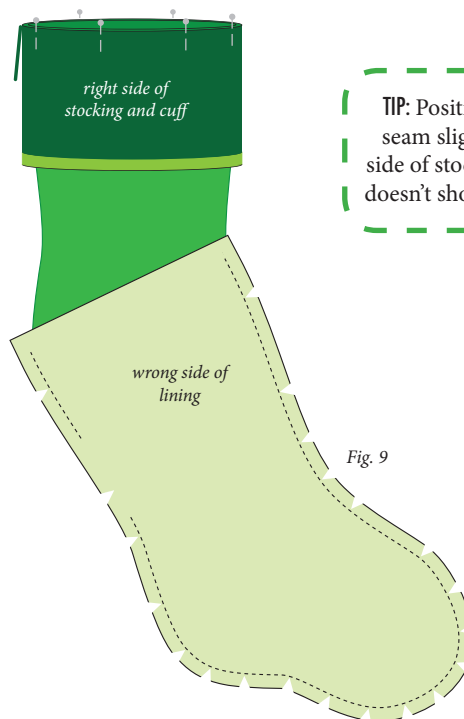


Fig. 8

## Attaching the Cuff:

22. Turn main body of stocking **RIGHT** side out. Press edges flat, working the seams with thumb and forefingers.
23. Place cuff around main body of stocking, raw edges aligned and **RIGHT** sides out. Pin in place with 5-6 pins.
24. Pin loop in place at left side, aligned with stocking seam. Sew in place, using  $\frac{1}{4}$ " seam.
25. With lining **WRONG** side out, place main stocking/cuff/loop *inside* the lining. **RIGHT** sides of lining and main stocking should be facing. [Figure 9] Carefully reposition pins to include the lining. Lining will completely cover the cuff, loop and main body.
26. Stitch slowly around entire opening, using  $\frac{1}{2}$ " seam. A consistent  $\frac{1}{2}$ " seam is important to a professional look, so take your time.



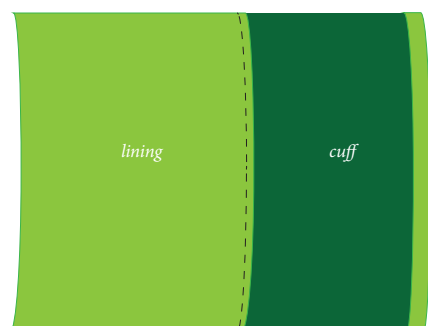
**TIP:** Position the cuff side seam slightly to the back side of stocking so the seam doesn't show from the front.

Fig. 9



## Final Touches:

27. Pull stocking body and cuff through opening in lining.
28. Tuck seam allowance in lining opening inside and edge stitch opening closed, using  $\frac{1}{8}$ " seam.
29. Push lining down into stocking.
30. Flip cuff straight up. Stitch all around inside of the stocking,  $\frac{1}{8}$ " inside of the top opening. [Figure 10] Go slowly, especially at side seams. You should be stitching on the lining and not the cuff. This understitching adds a stiffness to the cuff opening.
31. Fold cuff back down and press edge.
32. Hang your stocking by the chimney with care!



inside view of stocking Fig. 10

### YARDAGE REQUIREMENTS FOR A FAMILY OF STOCKINGS!

# of stockings:	2	3	4	5
Main body	1 yd	1½ yds	2 yds	2½ yds
Cuff & hanging loop	⅓ yd	⅓ yd	⅓ yd	⅓ yd
Lining & trim	1 yd	1½ yds	2 ys	2½ yds
Assorted 8" x 8" scraps for dots	5-7 pieces	7-9 pieces	9-11 pieces	11-13 pieces

(table works if using same style or assorted styles)

Are you a fat quarter fan? Two fat quarters may be substituted for yardage on the stocking fronts and backs, per stocking. Example: one fat quarter will make the front and another will make the back. Mix and match fabrics between stockings to give them the same feel without being identical. Have fun personalizing them to fit your family!

Continue the holiday sewing...



Find these patterns and more at:

[EmptyBobbinSewing.com](http://EmptyBobbinSewing.com)





Photography by Sarah Sorell  
Melissa, a pattern tester, used a #5 Perle cotton in Blanc and a crewel needle to embellish the Polka Dot stocking at top right.

## PRINTING INSTRUCTIONS:

Pages 8-11 may be printed on 8½" x 11" or A4 paper.

For all template sheets, print at 100%. Select "Do not scale" or "100%" in printer settings, if necessary.

Check 1" test square after printing to ensure accuracy.

For pages 8-11, trim at solid line around grid and tape pages together, matching letters.

# A

## STYLE TWO

TRACE 5  
ON FUSIBLE WEB

*Sleigh Bells Stockings*  
EMPTY BOBBIN  
sewing studio

# B

## STYLE TWO

TRACE 2  
ON FUSIBLE WEB

*Sleigh Bells Stockings*  
EMPTY BOBBIN  
sewing studio

# C

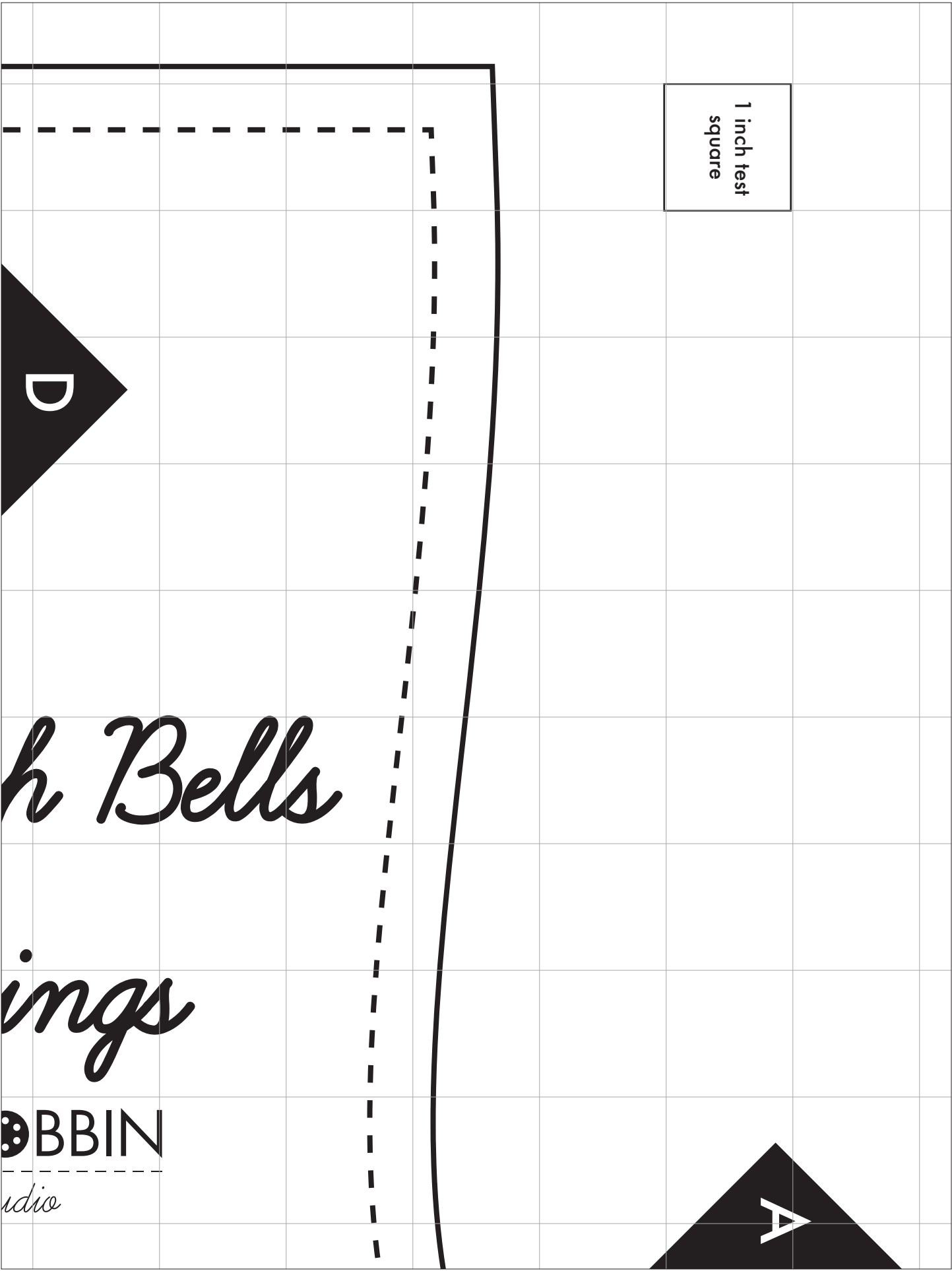
## STYLE TWO

TRACE 5 or 6  
ON FUSIBLE WEB

*Sleigh Bells Stockings*  
EMPTY BOBBIN  
sewing studio

1 inch test  
square

EmptyBobbinSewing.com



1 inch test  
square

D

h Bells

ings

BBIN

udio

A



# OUT PLATE

A

B

DOTTED LINE INDICATES  
FINISHED SIZE

TRACE ONE EACH FOR  
LINING AND MAIN BODY

TRACE ONE REVERSE EACH  
FOR LINING AND  
MAIN BODY BACK



*The Sleigh*

*Stock*

EMPTY B

*sewing sta*

© 2011

# CUT TEMP

C

B

