

# SIMPLE BURP CLOTH

Designed by Robert Kaufman Fabrics  
[www.robertkaufman.com](http://www.robertkaufman.com)



Finished project measures approximately: 10" x 14-1/2"

Difficulty Rating: **Beginner**

**ROBERTKAUFMAN**  
F A B R I C S

*For questions about this pattern, please email [Patterns@RobertKaufman.com](mailto:Patterns@RobertKaufman.com).*

## Fabric and Supplies Needed

*Fabric amounts based on yardage that is 42" wide.*

Fabric	Yardage	Fabric	Yardage
Fabric A	one fat quarter	Fabric B	one fat quarter

You will also need:  
Batting or flannel scrap, large enough for the template

Copyright 2018, Robert Kaufman  
For individual use only - Not for resale

## Notes Before You Begin

- Read through all of the instructions before beginning.
- All of the seam allowances are 1/4" unless otherwise noted.
- Press seam allowances open unless otherwise noted.
- Width of fabric (WOF) is equal to at least 42" wide.
- Right sides together has been abbreviated to RST.
- Remember to measure twice and cut once!

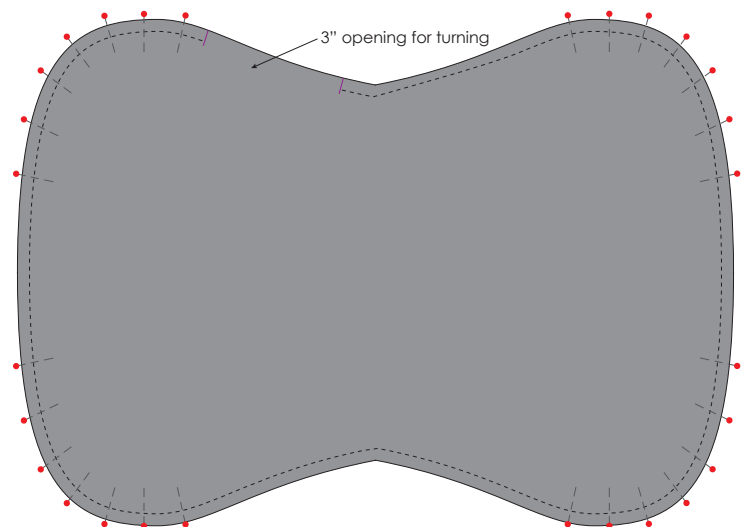
## Cutting Instructions

**From each of Fabrics A, B and the batting/flannel scrap, cut:**  
one from Template A, along the fold

## Assemble the Burp Cloth

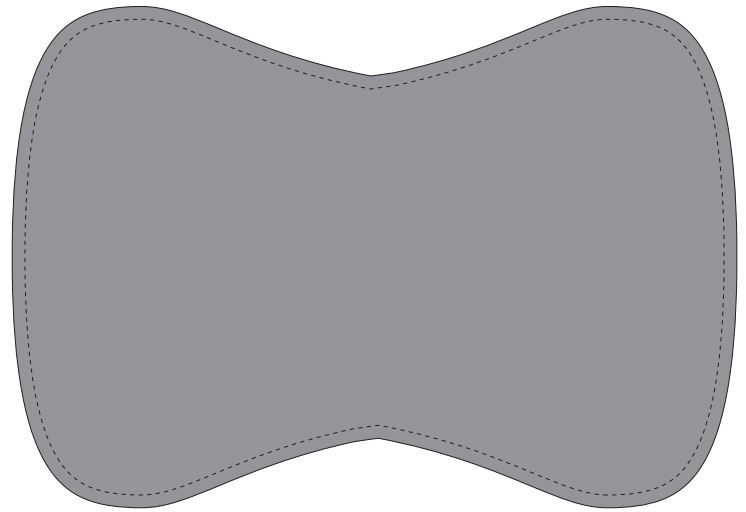
**Step 1:** Layer the fabrics in this order:  
Fabric A right side up  
Fabric B right side down  
Batting/Flannel

**Step 2:** Pin carefully around the edges, taking care to match the curves. Mark a 3" opening along one edge. Sew around the edge, using a 1/4" seam, backstitching at each edge of the opening.



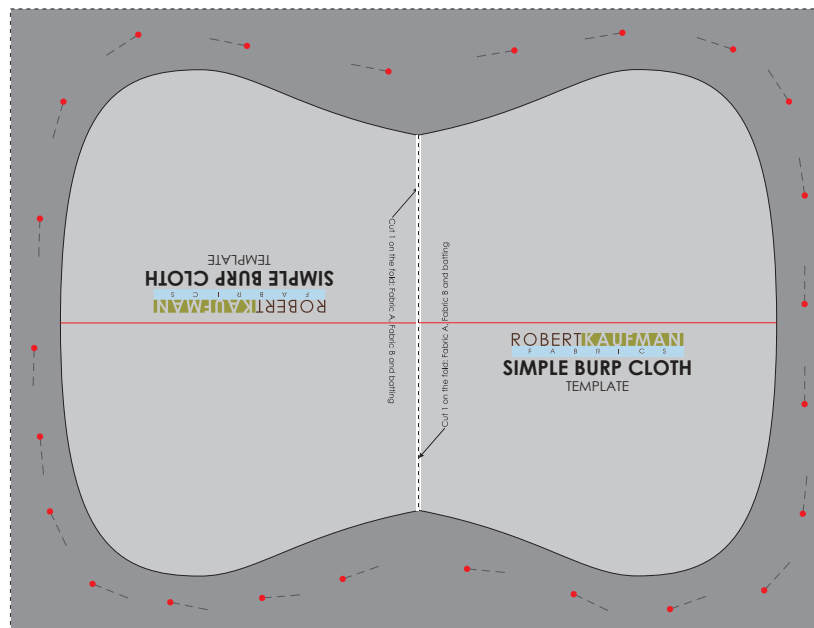
**Step 3:** Turn the burp cloth right side out through the opening. Tuck the edges of the opening in and press all around the edge of the burp cloth, pinning the raw edges in at the opening.

**Step 4:** Edgestitch around the entire burp cloth using a 1/8" seam, closing the opening as you sew.



### Alternate construction method

If sewing curves is new to you, do not cut the fabric first. Instead, layer the fabrics as in Step 1. Then using the Template and a fabric marker, mark the burp cloth shape on the batting/flannel. Then pin outside this shape (adding a few pins in the center of the burp cloth to prevent any shifting). Sew on your marked line, leaving a 3-4" opening. Cut out the burp cloth, 1/4" from your stitching line, then proceed with Step 3.

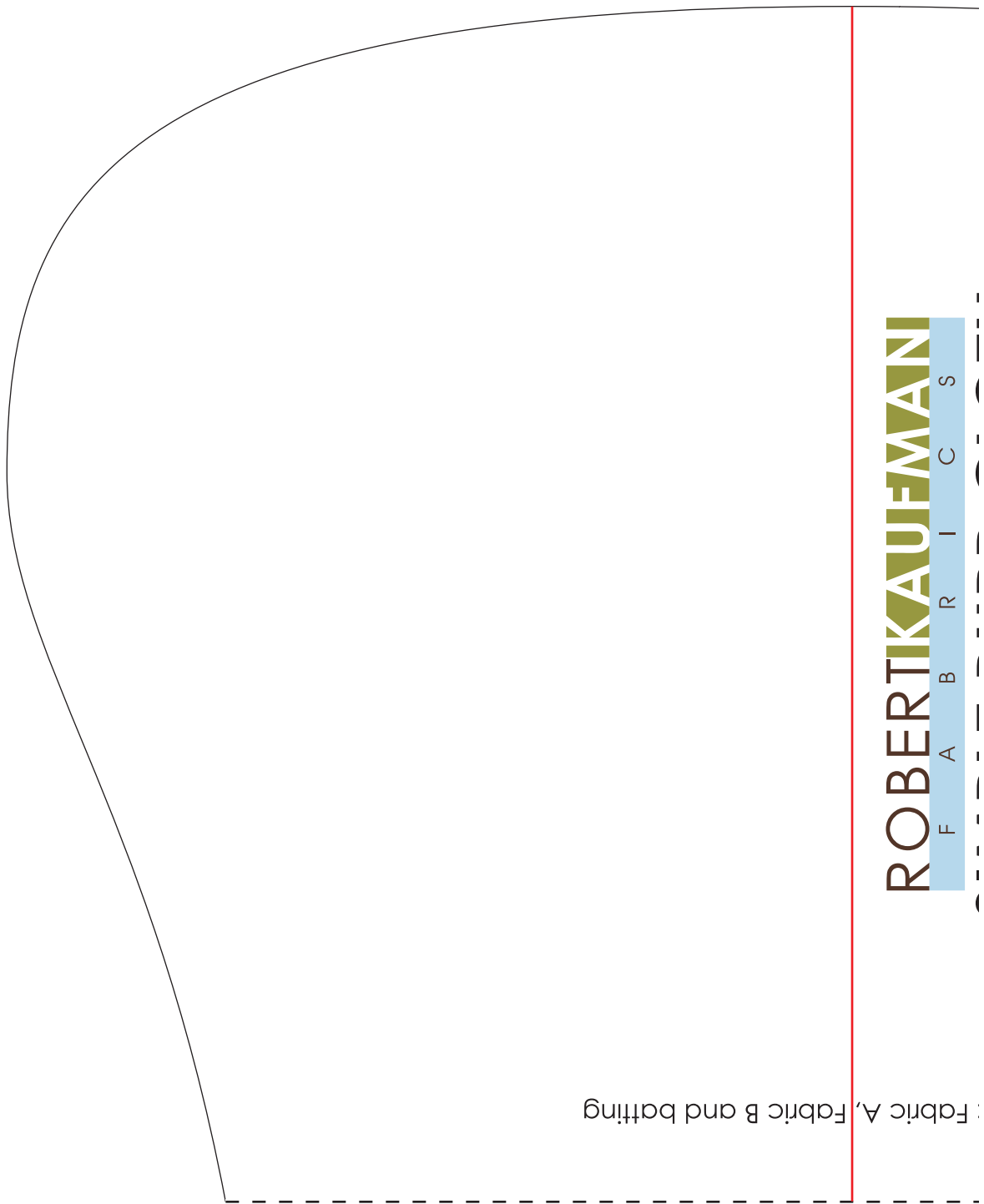


## Templates

Print at 100%.

Check size printed correctly using 1" box for scale prior to cutting fabric.

Align two parts of template along red line. Tape together to create one large template.



1" box for  
scale

1" box for  
scale

