

SIMPLE BIB

Designed by Robert Kaufman Fabrics
www.robertkaufman.com



Finished project measures approximately: 8" x 12"

Difficulty Rating: **Beginner**

ROBERTKAUFMAN
F A B R I C S

For questions about this pattern, please email Patterns@RobertKaufman.com.

Fabric and Supplies Needed

Fabric amounts based on yardage that is 42" wide.

Fabric	Yardage	Fabric	Yardage
Fabric A	one fat quarter	Fabric B	one fat quarter

You will also need:

Batting or flannel scrap, large enough for the template, 1" square of sewable hook and loop tape.

Copyright 2018, Robert Kaufman

For individual use only - Not for resale

Notes Before You Begin

- Read through all of the instructions before beginning.
- All of the seam allowances are 1/4" unless otherwise noted.
- Press seam allowances open unless otherwise noted.
- Width of fabric (WOF) is equal to at least 42" wide.
- Right sides together has been abbreviated to RST.
- Remember to measure twice and cut once!

Cutting Instructions

From each of Fabrics A, B and the batting/flannel scrap, cut:
one from Template A, along the fold

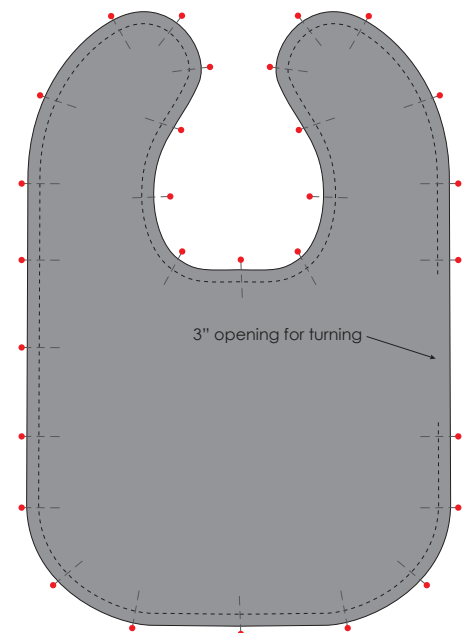
Assembly Instructions

Step 1: Layer the fabrics in this order:

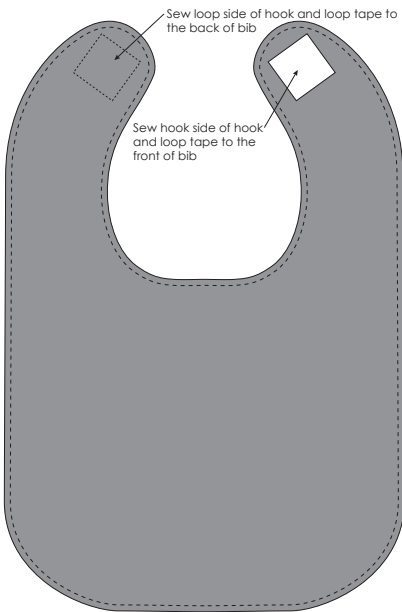
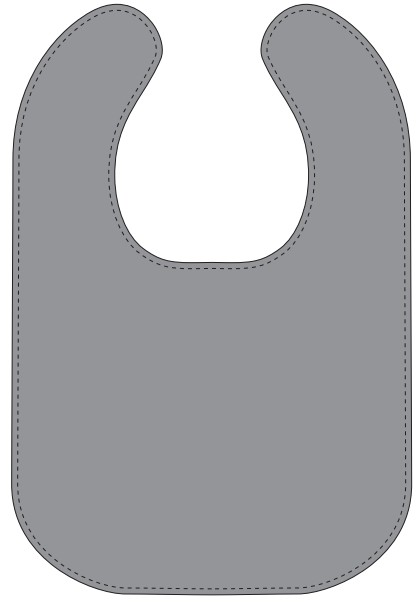
Fabric A right side up
Fabric B right side down
Batting/Flannel

Step 2: Pin carefully around the edges, taking care to match the curves. Mark a 3" opening along one edge. Sew around the edge, using a 1/4" seam, backstitching at each edge of the opening.

Step 3: Turn the bib right side out through the opening. Tuck the edges of the opening in and press all around the edge of the bib, pinning the raw edges in at the opening.

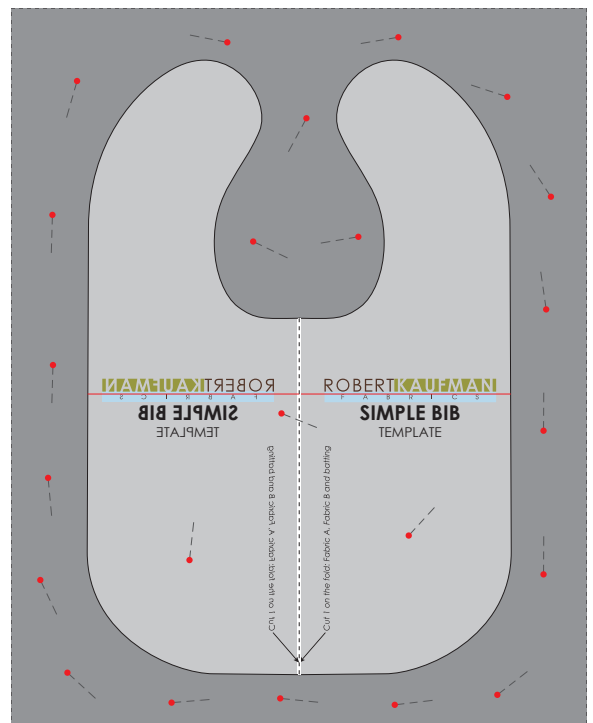


Step 4: Edgestitch around the entire bib using a 1/8" seam, closing the opening as you sew.



Step 5: Pin the 1" squares of sewable hook and loop tape to the ends of each of the bib tabs. Be sure that they will meet up to secure the bib once the bib is on the child. Sew around each square of hook and loop tape, backstitching to secure.

Alternate construction method: If sewing curves is new to you, do not cut the fabric first. Instead, layer the fabrics as in Step 1. Then using the Template and a fabric marker, mark the bib shape on the batting/flannel. Then pin outside this shape (adding a few pins in the center of the bib to prevent any shifting). Sew on your marked line, leaving a 3-4" opening. Cut out the bib, 1/4" from your stitching line, then proceed with Step 3.



Print at 100%.

Check size printed correctly using 1" box for scale prior to cutting fabric.

Align two parts of template along red line. Tape together to create one large template.

1" box for scale

