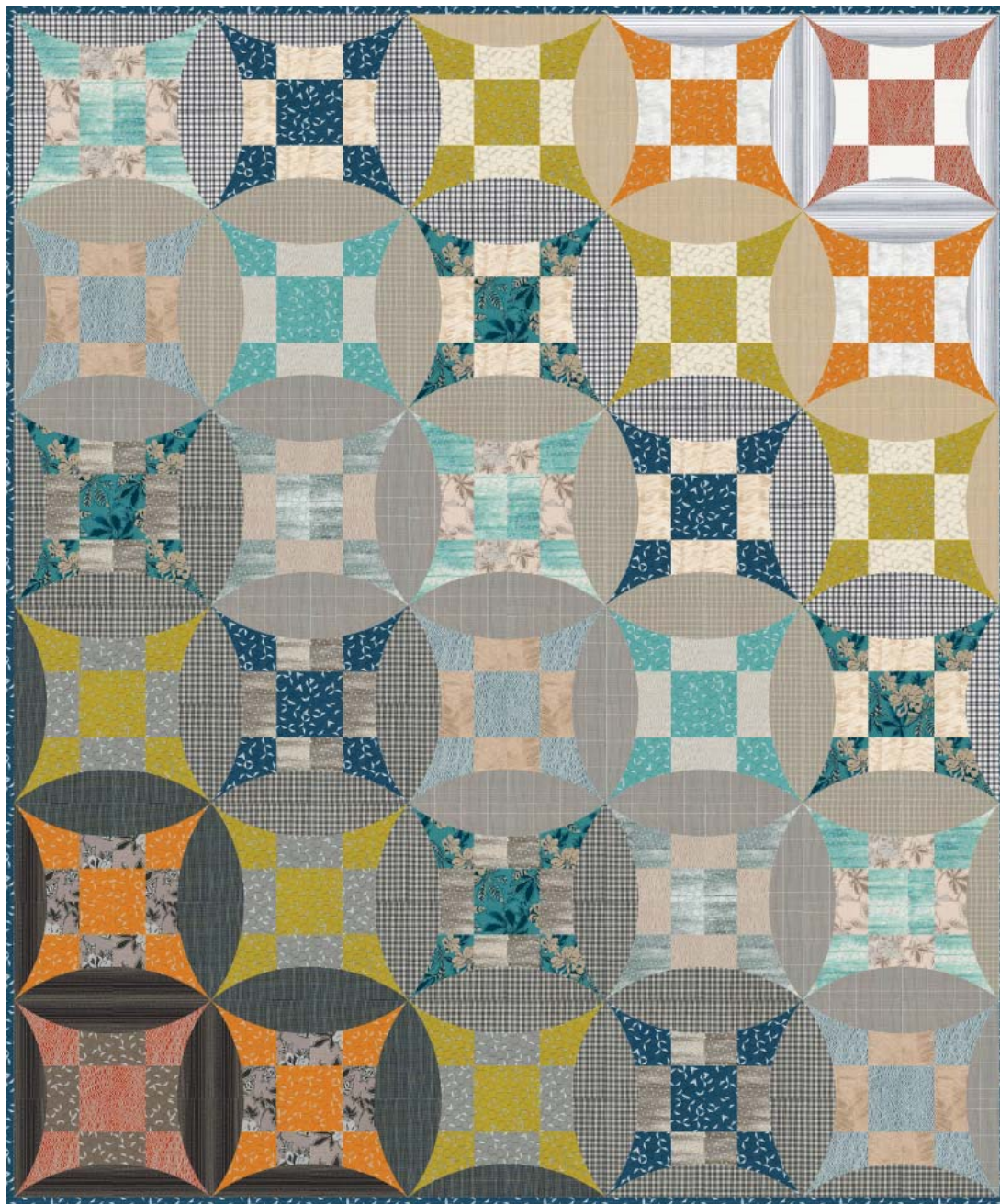


SHIMMERING SNOWBALL

Designed by Janice Ryan
www.betteroffthread.com

Featuring

Shimmer On
Jennifer Simpson



Finished quilt measures: 60" x 72"

Pattern Level: Experienced Intermediate

"I know the ropes and would like to test my skills!"

ROBERT KAUFMAN
F A B R I C S

For questions about this pattern, please email Patterns@RobertKaufman.com.


Fabric and Supplies Needed

Fabric amounts based on yardage that is 42" wide.

Color	Fabric	Name/SKU	Yardage	Color	Fabric	Name/SKU	Yardage
	A	AJSP-17024-59 OCEAN	1/2 yard		J	AJSP-17026-141 SAFFRON	1/2 yard
	B	AJSP-17024-90 PEARL	1/3 yard		K	AJSP-17026-183 PEWTER	1/3 yard
	C	AJSP-17024-183 PEWTER	1/4 yard		L	AJSP-17026-213 TEAL	1/3 yard
	D	AJSP-17025-59 OCEAN	1/3 yard		M	AJSP-17026-293 SMOKE	1/4 yard
	E	AJSP-17025-155 STONE	1/3 yard		N	AJSP-17027-59 OCEAN	1/3 yard
	F	AJSP-17025-183 PEWTER	1/3 yard		O	AJSP-17027-183 PEWTER	1/4 yard
	G	AJSP-17026-49 OLIVE	5/8 yard		P	AJSP-17027-254 FROST	1/4 yard
	H	AJSP-17026-59 OCEAN	1/2 yard		Q	AJSP-17027-293 SMOKE	1/4 yard
	I	AJSP-17026-90 PEARL	1/3 yard		R	AJSP-17027-359 CHINESE RED	1/3 yard

Fabric and Supplies Needed

Fabric amounts based on yardage that is 42" wide.

Color	Fabric	Name/SKU	Yardage	Color	Fabric	Name/SKU	Yardage
	S	AJSP-17028-90 PEARL	1/3 yard		Y	AJSM-17067-14 NATURAL	1/2 yard
	T	AJSP-17028-254 FROST	1/4 yard		Z	AJSM-17067-184 CHARCOAL	1/2 yard
	U	AJSP-17028-304 SHADOW	1/3 yard		AA	AJSM-17068-14 NATURAL	7/8 yard
	V	AJSM-17066-184 CHARCOAL	1/2 yard		BB	AJSM-17068-184 CHARCOAL	7/8 yard
	W	AJSM-17066-304 SHADOW	1/2 yard		CC	AJSM-17068-188 PEPPER	7/8 yard
	X	AJSM-17067-12 GREY	7/8 yard		Binding*	AJSP-17026-59 OCEAN <i>*Also used for Fabric H</i>	5/8 yard

Copyright 2017, Robert Kaufman
For individual use only - Not for resale

You will also need:
4 yards for backing
Template plastic
6-1/2 yards of Lightweight Interfacing

Notes Before You Begin

- Read through all of the instructions before beginning.
- All of the seam allowances are 1/4" unless otherwise noted.
- Press seam allowances open unless otherwise noted.
- Width of fabric (WOF) is equal to at least 42" wide.
- Right sides together has been abbreviated to RST.
- Remember to measure twice and cut once!

Cutting Instructions

From Fabrics A, H and J, cut:
three 4-1/2" x WOF strips. Subcut:
twenty 4-1/2" squares

From Fabrics B, I, K and U, cut:
two 4-1/2" x WOF strips. Subcut:
twelve 4-1/2" squares

From Fabrics C, O, Q and T, cut:
one 4-1/2" x WOF strip. Subcut:
eight 4-1/2" squares

From Fabrics D and N, cut:
two 4-1/2" x WOF strips. Subcut:
fifteen 4-1/2" squares

From Fabrics E and S, cut:
two 4-1/2" x WOF strips. Subcut:
sixteen 4-1/2" squares

From Fabrics F, L and R, cut:
two 4-1/2" x WOF strips. Subcut:
ten 4-1/2" squares

From Fabric G, cut:
four 4-1/2" x WOF strips. Subcut:
thirty 4-1/2" squares

From Fabrics M and P, cut:
one 4-1/2" x WOF strip. Subcut:
eight 4-1/2" squares

From Fabrics V, W, Y and Z, cut:
one 13" x WOF strip. Subcut:
six 5" x 13" rectangles

From Fabric X, cut:
two 13" x WOF strips. Subcut:
twelve 5" x 13" rectangles

From Fabric AA, cut:
two 13" x WOF strips. Subcut:
ten 5" x 13" rectangles

From Fabric BB, cut:
two 13" x WOF strips. Subcut:
fourteen 5" x 13" rectangles

From Fabric CC, cut:

two 13" x WOF strips. Subcut:
eleven 5" x 13" rectangles

From the Binding Fabric, cut:

seven 2-1/2" x WOF strips

From the Lightweight Interfacing, cut:

seventy-one 5" x 13" rectangles

Assemble the Blocks

Step 1: Sew 4-1/2" squares into 9-patch blocks, as pictured. Press seams toward the darker fabric in each row and press the row seams open when sewing the block together. Each block will measure 12-1/2" square.

Make the following number of each block:



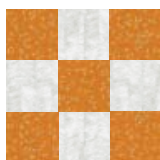
1

Fabrics R & P



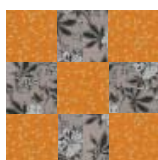
1

Fabrics R & M



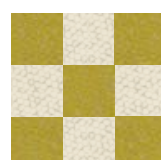
2

Fabrics J & T



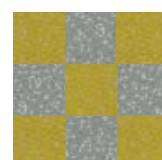
2

Fabrics J & C



3

Fabrics G & I



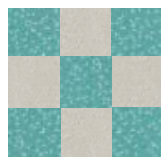
3

Fabrics G & K



3

Fabrics D & B



2

Fabrics L & O



3

Fabrics N & S



2

Fabrics F & Q



2

Fabrics A & S



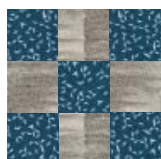
2

Fabrics A & E



2

Fabrics H & S



2

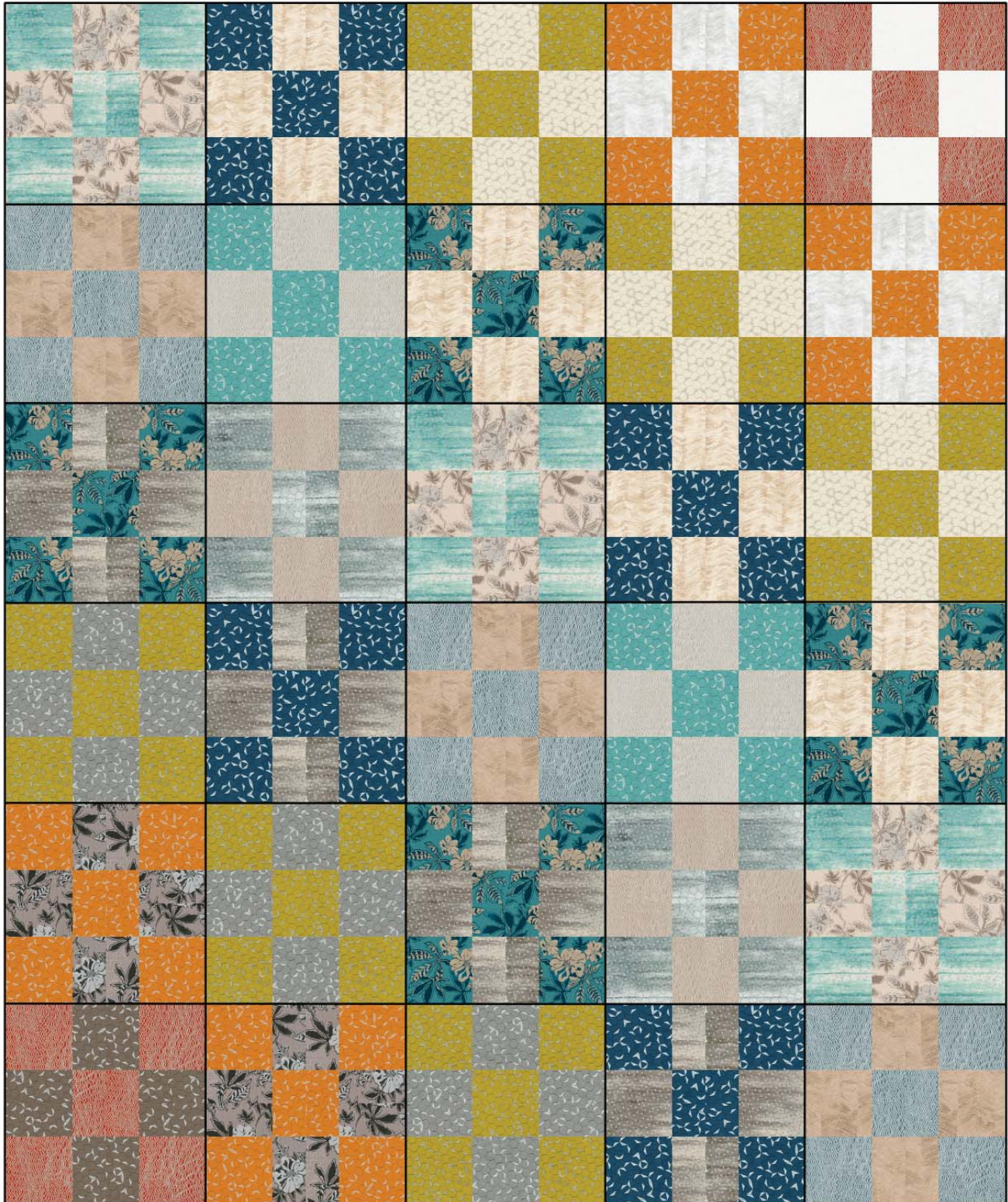
Fabrics H & E

Assemble Quilt Top

Step 2: Arrange the blocks together, as pictured, into six rows of five blocks each.

Step 3: Sew the blocks together to form rows. Press the rows to the left in the odd numbered rows and to the right in the even numbered rows.

Step 4: Sew the rows together to form the quilt. Press the row seams open.



Make the Template A Pieces

Step 5: Place Template A on the non-fusible side of an interfacing rectangle and trace around the edge using a fine-tipped fabric marking pen or pencil. Be sure there is at least a 1/4" of fabric around all edges and points. Repeat to all seventy-one interfacing rectangles.

Step 6: Place an interfacing rectangle on a fabric rectangle. The fusible side of the interfacing will be facing the right side of the fabric. Do not fuse together.

Step 7: Sew on the drawn line, pivoting at the points and ending a few stitches over the beginning stitches.

Step 8: Trim seam allowances of fabric and interfacing to 1/8" and trim at the points.

Step 9: Cut a 2"-3" opening in the center of the interfacing (being careful not to clip the fabric) and flip fabric right-side-out gently, so as to not tear the interfacing. Push points out using a pencil or knitting needle. Finger press the edges.

Step 10: Repeat to make all seventy-one Template A pieces.

Apply Template Pieces to Quilt Top



Quilt Assembly Diagram

Step 11: Arrange the finished Template A pieces on the quilt top according to the Assembly Diagram and pin to quilt top. Press pieces one by one with a hot iron to fuse to quilt top.

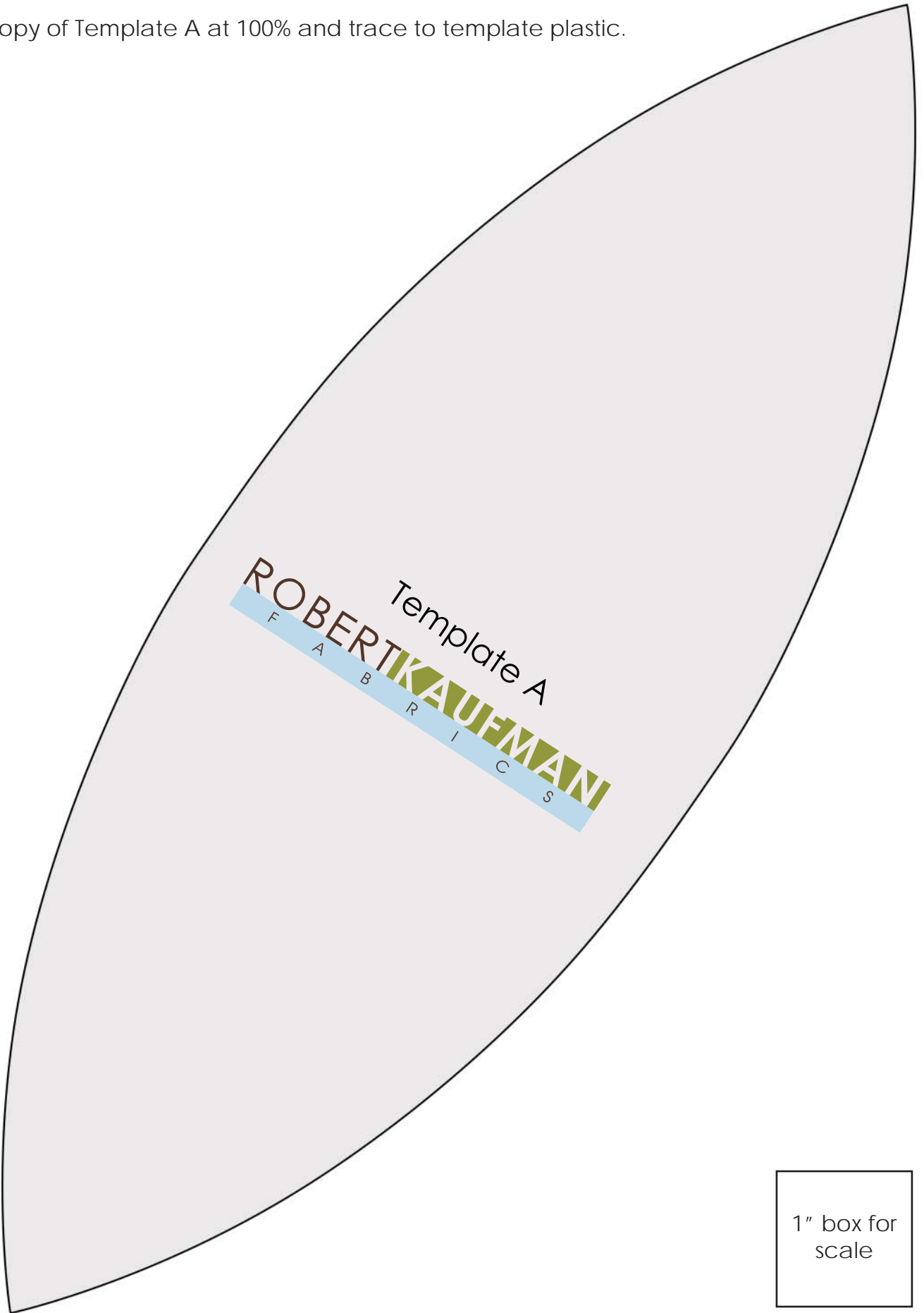
Step 12: Machine edge stitch around each piece.

Step 13: Trim excess curves from the outermost edge of the quilt top to give the quilt straight edges. *Tip: Trim with the wrong side of the quilt facing up and cut along the blocks, to aid in keeping the trimming cuts straight.*

Your Quilt top is Complete!

Templates

Print 1 copy of Template A at 100% and trace to template plastic.



1" box for
scale