

SEWING SET

Designed by Elise Lea for RK
www.robertkaufman.com

Featuring **FRIENDLY FACES**




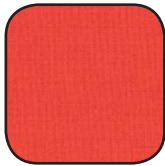

Difficulty Rating: **Beginner**

ROBERTKAUFMAN
F A B R I C S

For questions about this pattern, please email Patterns@RobertKaufman.com.

Fabric and Supplies Needed

Fabric amounts based on yardage that is 42" wide.

Color	Fabric	Name/SKU	Yardage	Color	Fabric	Name/SKU	Yardage
	A	AIKD-18101-195 BRIGHT	1 yard		Binding	K001-1087 CORAL	3/8 yard
	B	K001-455 RIVIERA	1 yard	<p>You will also need: 1/4" wide elastic 30" x 36" of batting (approximately) walnut shells</p>			

Copyright 2018, Robert Kaufman
For individual use only - Not for resale

Notes Before You Begin

- Read through all of the instructions before beginning.
- All of the seam allowances are 1/4" unless otherwise noted.
- Press seam allowances open unless otherwise noted.
- Width of fabric (WOF) is equal to at least 42" wide.
- Right sides together has been abbreviated to RST.
- Remember to measure twice and cut once!

Machine Cover



1. Measure the height and width of your machine and fussy cut two Fabric A panels to that approximate size. You want the panels to be slightly wider than your machine, and either the same height or a little shorter. *Our sample was made with two rectangles, 5 blocks tall by 8 blocks wide.*

2. Sew the two rectangles together along the top edge of both rectangles so that when the cover is draped over the machine, the print on both sides is right side up.
3. Cut a rectangle of Fabric B backing 2" wider and 2" taller than the size of our your piece sewn in Step 2. *Our example backing was cut approximately 25" x 31"*.
4. Sandwich the backing, batting and top and quilt as desired. Trim away the excess batting and backing.
5. Cut five 2-1/4" x WOF strips from the binding fabric. Sew three strips together, end to end, and set aside.
6. Cut the remaining two strips of binding into four 2-1/4" x 20" strips. Fold in half along the length, then fold the long raw edges in to meet at the center fold, encasing all raw edges. Fold the short raw edges in, then edge stitch along the folds to secure, creating ties.
7. Sew the binding to the cover. When attaching binding to back of cover, put the raw end of the tie under the binding and machine stitch the binding in place to secure both binding and ties in place. Each tie is placed halfway between the lower edge and the top/center of the cover up on each edge of the panel. Repeat for all four ties as you stitch the binding down.

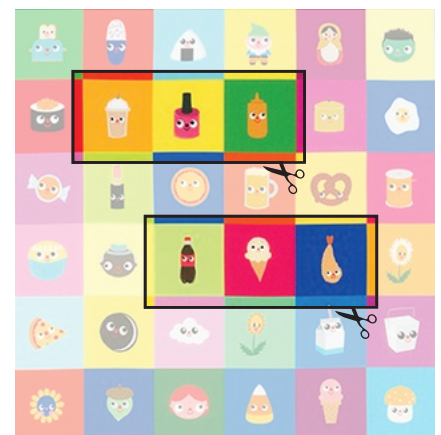
Pin Cushion #1

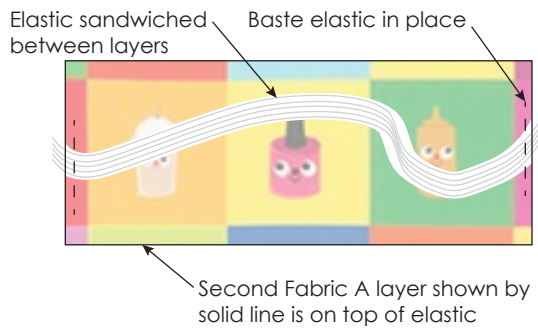


1. Fussy cut six squares from the remainder of Fabric A. *Tip: these can be cut from six individual squares, OR as two rectangles, each 1x3 (Skip Step 2 if using this option) and cut 1/4" outside of the squares.*



OR



2. Sew into two blocks, 1 x 3
3. Measure around the three sides of your machine, where the neck of the machine meets the base, omitting the throat section. Cut a piece of 1/4" wide elastic 1" shorter than this measurement.
4. Pin one end of the elastic at the center of one short edge of a Fabric A piece from Step 2, aligning the raw edges. Place the second Fabric A piece on top, right sides together. The elastic will be sandwiched between and will extend out beyond the other short end. At the end of the fabric where the raw edge of the elastic is aligned with the fabric, baste the elastic in place.
 
5. Place the remaining raw edge of the elastic between the opposite short ends of the Fabric A pieces. Ensure that the elastic is not twisted. The excess elastic will be between the two Fabric A layers. Baste in place.
6. Sew around all edges of the pin cushion, back stitching over the edges of elastic to secure it and leaving a 1-1/2" opening in the middle of a long side for turning.
7. Turn the pincushion right side out and fill with walnut shells or filling of your choice. Stitch the opening closed.

Pin Cushion #2



1. Cut two Fabric A squares from the remaining fabric. *Tip: to make your pin cushion slightly larger, cut 1/4" outside of the square.*
2. Place right sides together and stitch around the edges leaving a 1" opening on one side.
3. Fill with walnut shells and stitch the opening closed.

This pattern may be used for personal purposes only and may not be reproduced in any form without the express permission from Robert Kaufman Fabrics. This pattern is not for resale. All patterns, unless otherwise attributed, are © Robert Kaufman Co., Inc. 2005-2018. All rights reserved.