

# ROUND REVERSIBLE PLACEMATS

Designed by Elise Lea for RK  
[www.robertkaufman.com](http://www.robertkaufman.com)

Featuring *Wishwell*

*Sweetness*

Vanessa Lillrose & Linda Fitch



Finished size 15" x 15", makes four placemats




Difficulty Rating: **Beginner**

**ROBERTKAUFMAN**  
F A B R I C S

For questions about this pattern, please email [Patterns@RobertKaufman.com](mailto:Patterns@RobertKaufman.com).

## Fabric and Supplies Needed

*Fabric amounts based on yardage that is 42" wide.*

Color	Fabric	Name/SKU	Yardage	Color	Fabric	Name/SKU	Yardage
	A	WEL-21259-32 MINT	1-1/8 yard		Binding	WEL-21263-50 LIME	1/2 yard
	B	WEL-21260-32 MINT	1-1/8 yard	<p>You will also need: four 18" squares of batting fabric marking pen</p>			

Copyright 2022, Robert Kaufman  
For individual use only - Not for resale

## Notes Before You Begin

- Read through all of the instructions before beginning.
- All of the seam allowances are 1/4" unless otherwise noted.
- Press seam allowances open unless otherwise noted.
- Width of fabric (WOF) is equal to at least 42" wide.
- Right sides together has been abbreviated to RST.
- Remember to measure twice and cut once!

## Cutting Instructions

### From each of Fabrics A and B, cut:

two 18" x WOF strips. Subcut:

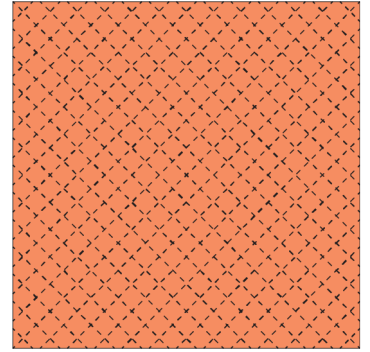
four 18" squares, Fabric A for the Side 1 and Fabric B for Side 2

### From the Binding fabric:

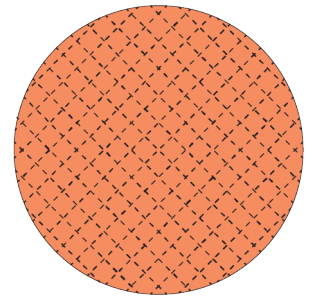
cut the fabric into 2-1/2" wide bias strips, and sew together, end-to-end, until you have approximately 228" of bias binding.

## Assemble the Placemats

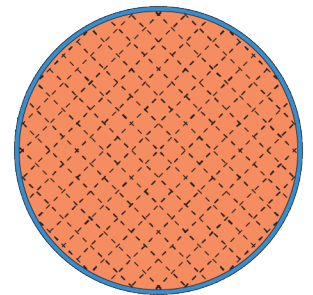
**Step 1:** Layer the Fabric A and B pieces right side out, with the batting sandwiched between. Baste and quilt as desired. Repeat for all four placemats.



**Step 2:** Place the Template 1 circle on top of one placemat "sandwich." Mark around the template shape with a fabric marking pen. Cut the placemat on the marked line. Repeat to make four.



**Step 3:** Bind each placemat with bias binding using your preferred method. Your placemat set is complete. Enjoy!



## Templates

Print four copies of Template 1 at 100%. Cut out on the lines and tape together to form a 15" circle.

Check size printed correctly using 1" box for scale prior to cutting fabric.

1" box for  
scale

ROBERTKAUFMAN  
F A B R I C S

**ROUND REVERSIBLE PLACEMATS**

Template 1

This pattern may be used for personal purposes only and may not be reproduced in any form without the express permission from Robert Kaufman Fabrics. This pattern is not for resale. All patterns, unless otherwise attributed, are © Robert Kaufman Co., Inc. 2005-2022. All rights reserved.