

ROSE GARDEN

Designed by Debbie Beaves for RK
www.robertkaufman.com

Featuring FLOWERHOUSE

Bouquet of Roses
A FLOWERHOUSE COLLECTION
by Debbie Beaves



Finished quilt measures: 60" x 74"

Difficulty Rating: **Intermediate**

ROBERT KAUFMAN
F A B R I C S

For questions about this pattern, please email Patterns@RobertKaufman.com.

Fabric and Supplies Needed

Fabric amounts based on yardage that is 42" wide.

Color	Fabric	Name/SKU	Yardage	Color	Fabric	Name/SKU	Yardage
	A	FLH-21364-83 VINTAGE WHITE	1-1/2 yards		D	FLH-21369-83 VINTAGE WHITE	1-5/8 yards
	B	FLH-21368-404 WOODROSE	1 yard		E	FLH-21368-43 LEAF	1/2 yard
	C	FLH-21370-34 SAGE	1/2 yard		Binding*	FLH-21368-404 WOODROSE <small>*Also used for Fabric B</small>	5/8 yard
Copyright 2023, Robert Kaufman For individual use only - Not for resale				You will also need: 3-5/6 yards for backing			

Notes Before You Begin

- Read through all of the instructions before beginning.
- All of the seam allowances are 1/4" unless otherwise noted.
- Press seam allowances open unless otherwise noted.
- Width of fabric (WOF) is equal to at least 42" wide.
- Right sides together has been abbreviated to RST.
- Remember to measure twice and cut once!

Cutting Instructions

From Fabric A, cut:

eight 6-1/2" x WOF strips.

From two strips, subcut:

twelve 6-1/2" squares.

Sew the six remaining strips together end-to-end, then subcut:

two 6-1/2" x 62-1/2" outer side borders.

two 6-1/2" x 60-1/2" outer top/bottom borders.

From Fabric B, cut:

six 2-1/2" x WOF strips. Sew the strips together end-to-end, then subcut:

two 2-1/2" x 58-1/2" middle side borders.

two 2-1/2" x 48-1/2" middle top/bottom borders.

nine 1-1/2" x WOF strips. Subcut:

twenty-four 1-1/2" x 6-1/2" rectangles.

twenty-four 1-1/2" x 8-1/2" rectangles.

From Fabric C, cut:

six 2-1/2" x WOF strips. Subcut:

forty-eight 2-1/2" x 4-1/2" rectangles.

six 2-1/2" cornerstone squares.

From Fabric D, cut:

twenty-two 2-1/2" x WOF strips.

From seventeen strips, subcut:

seventeen 2-1/2" x 12-1/2" sashing rectangles.

ninety-six 2-1/2" x 4-1/2" rectangles.

Sew the five remaining strips together end-to-end, then subcut:

two 2-1/2" x 54-1/2" inner side borders.

two 2-1/2" x 44-1/2" inner top/bottom borders.

From Fabric E, cut:

three 4-1/2" x WOF strips. Subcut:

twenty-four 4-1/2" squares, then subcut each square once diagonally to yield:

forty-eight 4-1/2" triangles.

From the Binding Fabric, cut:

eight 2-1/2" x WOF strips.

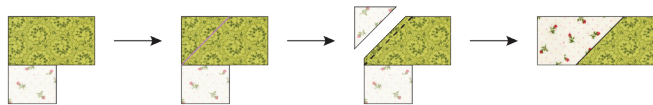
Assemble the Blocks

Step 1: Gather:

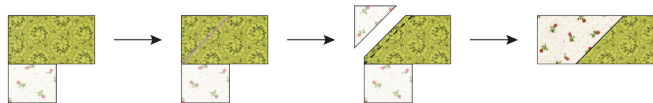
one 6-1/2" Fabric A square
 two 1-1/2" x 6-1/2" Fabric B rectangles
 two 1-1/2" x 8-1/2" Fabric B rectangles
 four 2-1/2" x 4-1/2" Fabric C rectangles
 eight 2-1/2" x 4-1/2" Fabric D rectangles
 four 4-1/2" Fabric E triangles



Step 2: Place a 2-1/2" x 4-1/2" Fabric D rectangles on top of the 2-1/2" x 4-1/2" Fabric C rectangle aligned as shown. Mark a diagonal line across the Fabric D rectangle as shown. Sew on the marked lines, then trim the excess fabric 1/4" away from the sewn seams. Press.

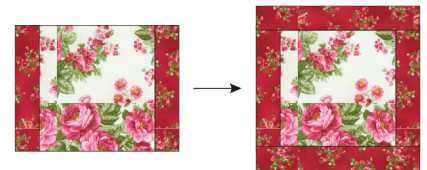


Step 3: Repeat Step 2 using the second 2-1/2" x 4-1/2" Fabric D rectangle on the other end of the unit.

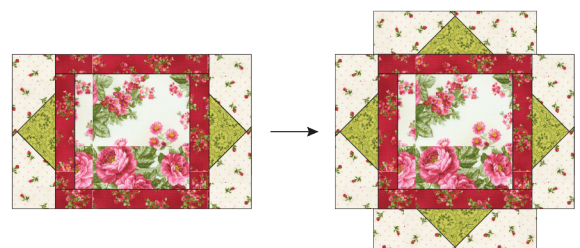


Step 4: Repeat Steps 1-3 to make four outer side units.

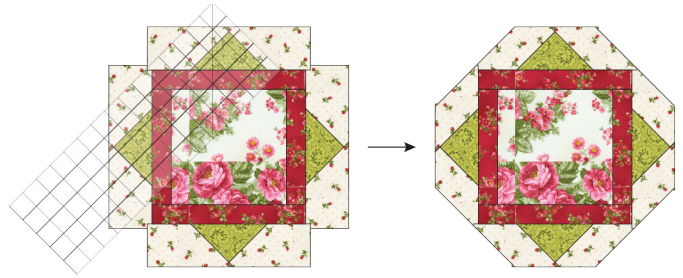
Step 5: Sew the two 1-1/2" x 6-1/2" Fabric B rectangles to opposite edges of the 6-1/2" Fabric A square, then press. Sew the two 1-1/2" x 8-1/2" Fabric B rectangles to the two remaining edges of the unit, then press.



Step 6: Sew two outer side units on opposite sides of the unit, then press. Center and sew the two remaining outer side units to the remaining edges of the unit, then press.



Step 7: Measure and cut $\frac{1}{4}$ " past the intersection of the outer side units.



Step 8: Sew a $4\frac{1}{2}$ " Fabric E triangle to each corner of the block, then press.

Step 9: Repeat Steps 1-8 to make twelve blocks.



Assemble the Horizontal Sashing Strips

Step 10: Gather:
three $2\frac{1}{2}$ " x $12\frac{1}{2}$ " Fabric D sashing rectangles
two $2\frac{1}{2}$ " Fabric C cornerstone squares

Step 11: Sew the squares and rectangles together in a long row as shown. Press.



Step 12: Repeat Steps 10-11 to make three horizontal sashing strips.

Assemble the Quilt

Step 13: Arrange the blocks into four rows of three blocks. Place a $2\frac{1}{2}$ " x $12\frac{1}{2}$ " Fabric D sashing rectangle in between each of the blocks.

Step 14: Sew the blocks and sashing rectangles together to form rows. Press the seams towards the sashing rectangles.

Step 15: Place a horizontal sashing strip in between each of the block rows. Sew the rows and horizontal sashing strips together to form the quilt center. Press the seams towards the horizontal sashing rows.

Step 16: Sew the inner side borders to the sides of the quilt center. Press toward the borders. Sew the inner top and bottom borders to the quilt center. Press toward the borders.

Step 17: Sew the middle side borders to the sides of the quilt center. Press toward the borders. Sew the middle top and bottom borders to the quilt center. Press toward the borders.



Step 18: Sew the outer side borders to the sides of the quilt center. Press toward the borders. Sew the outer top and bottom borders to the quilt center. Press toward the borders.

Your quilt top is complete! Baste, quilt, bind and enjoy!

This pattern may be used for personal purposes only and may not be reproduced in any form without the express permission from Robert Kaufman Fabrics. This pattern is not for resale. All patterns, unless otherwise attributed, are © Robert Kaufman Co., Inc. 2005-2023. All rights reserved.