

# ROSE

Designed by Ariga Mahmoudlou for RK Featuring  
[www.robertkaufman.com](http://www.robertkaufman.com)

ALPHONSE MUCHA 



Finished quilt measures: 54" x 73"

Difficulty Rating: **Intermediate**

**ROBERTKAUFMAN**  
F A B R I C S

For questions about this pattern, please email [Patterns@RobertKaufman.com](mailto:Patterns@RobertKaufman.com).

## Fabric and Supplies Needed

*Fabric amounts based on yardage that is 42" wide.*

Color	Fabric	Name/SKU	Yardage	Color	Fabric	Name/SKU	Yardage
	A	SRKD-18190-238 GARDEN	2/3 yard (one full panel)		I	SRKD-18194-4 BLUE	1/8 yard
	B	SRKD-18194-15 IVORY	1/4 yard		J	SRKD-18191-4 BLUE	1/8 yard
	C	SRKD-18191-238 GARDEN	3/8 yard		K	SRKD-18191-10 PINK	1/8 yard
	D	SRKD-18191-15 IVORY	1-1/4 yard		L	SRKD-18193-10 PINK	1/8 yard
	E	SRKD-18194-10 PINK	1/4 yard		M	SRKD-18194-130 SUNSHINE	1/8 yard
	F	SRKD-18194-144 PEACH	1/8 yard		N	SRKD-18194-55 SWEET PEA	1/8 yard
	G	SRKD-18193-15 IVORY	1/8 yard		O	SRKD-18191-268 NATURE	1-1/8 yard
	H	SRKD-18192-4 BLUE	1/4 yard		Binding*	SRKD-18194-10 PINK <i>*Also used for Fabric E</i>	5/8 yard
<p>Copyright 2018, Robert Kaufman For individual use only - Not for resale</p>				<p>You will also need: 3-1/2 yards for backing</p>			

## Notes Before You Begin

- Read through all of the instructions before beginning.
- All of the seam allowances are 1/4" unless otherwise noted.
- Press seam allowances open unless otherwise noted.
- Width of fabric (WOF) is equal to at least 42" wide.
- Right sides together has been abbreviated to RST.
- Remember to measure twice and cut once!

## Cutting Instructions

### **From Fabric A, fussy cut:**

one 22-1/2" x 41-1/2" center panel

### **From Fabric B, cut:**

four 1-1/2" x WOF strips. Subcut:

two 1-1/2" x 24-1/2" top/bottom border 1 pieces

two 1-1/2" x 41-1/2" side border 1 pieces

### **From Fabric C, cut:**

four 3" x WOF strips. Sew together, end-to-end, then subcut:

two 3" x 24-1/2" top/bottom border 2 pieces

two 3" x 48-1/2" side border 2 pieces

### **From Fabric D, cut:**

two 8-1/2" x WOF strips. Subcut

two 8-1/2" x 30-1/2" rectangles

two 8-1/2" x 11-1/2" rectangles

Tip: Cut one of each length from each WOF strip to maximize yardage.

three 3" x WOF strips. Subcut

forty 3" squares for the HSTs

four 2-1/2" x WOF strips. Subcut

fifty 2-1/2" squares

two 2-1/2" x 8-1/2" rectangles

two 2-1/2" x 6-1/2" rectangles

two 2" x WOF strips. Subcut

twenty-four 2" squares for the HSTs

one 1-1/2" x WOF strip. Subcut

twenty-four 2" squares

### **From Fabric E, cut:**

one 3" x WOF strip. Subcut

eight 3" squares for the HSTs

two 2" x WOF strips. Subcut

twenty-four 2" squares for the HSTs

### **From Fabric F, cut:**

one 3" x WOF strip. Subcut

eight 3" squares for the HSTs

**From Fabric G, cut:**

one 3" x WOF strip. Subcut  
eight 3" squares for the HSTs

**From Fabric H, cut:**

two 3" x WOF strips. Subcut  
sixteen 3" squares for the HSTs

**From Fabric I, cut:**

one 3" x WOF strip. Subcut  
eight 3" squares for the HSTs

**From Fabric J, cut:**

one 3" x WOF strip. Subcut  
eight 3" squares for the HSTs  
Trim the remainder of the strip to 2" wide, then subcut:  
eight 2" squares for the HSTs

**From Fabric K, cut:**

one 3" x WOF strip. Subcut  
eight 3" squares for the HSTs

**From Fabric L, cut:**

one 3" x WOF strip. Subcut  
eight 3" squares for the HSTs

**From Fabric M, cut:**

one 2" x WOF strip. Subcut  
eight 2" squares for the HSTs

**From Fabric N, cut:**

one 2" x WOF strip. Subcut  
eight 2" squares for the HSTs

**From Fabric O, cut:**

six 5" x WOF strips. Sew together, end-to-end, then trim:  
two 5" x 45-1/2" top/bottom border 3 pieces  
two 5" x 73-1/2" side border 3 pieces  
one 3" x WOF strip. Subcut  
eight 3" squares for the HSTs

**From the Binding Fabric, cut:**

seven 2-1/2" x WOF strips

## Assemble the Half-Square Triangle (HST) Units

**Step 1:** Pair a 3" Fabric D square with a 3" Fabric E square, RST. Mark a diagonal line on the wrong side of one square. Sew  $\frac{1}{4}$ " away from both sides of the marked line. Cut on the marked line, creating two half-square triangles (HSTs). Press toward the darker fabric. Trim to 2-1/2" square. Repeat to make eight D/E HSTs.



**Step 2:** Repeat Step 1 with remaining 3" squares to make the following:



eight  
D/O HSTs



eight  
D/F HSTs



eight  
D/G HSTs



sixteen  
D/H HSTs



eight  
D/I HSTs



eight  
D/J HSTs



eight  
D/K HSTs



eight  
D/L HSTs



eight  
E/O HSTs



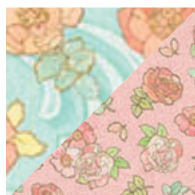
eight  
F/G HSTs



eight  
H/I HSTs



eight  
J/K HSTs



eight  
H/L HSTs

**Step 3:** Repeat Step 1, but this time with the 2" squares, trimming the HSTs to 1-1/2" square to make the following:



twenty-four  
D/E HSTs



eight  
D/J HSTs



eight  
D/M HSTs



eight  
D/N HSTs



eight  
E/J HSTs



eight  
E/M HSTs

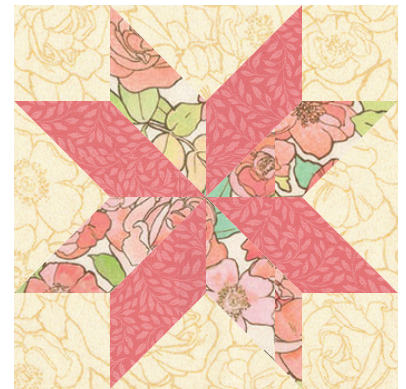


eight  
E/N HSTs

## Assemble the Blocks

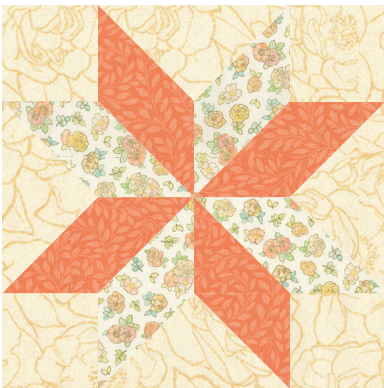
**Step 4:** Gather:  
four Fabric D squares  
four D/E HSTs  
four D/O HSTs  
four E/O HSTs

Arrange in four rows of four, noting the fabric placement and HST orientation in the Block Assembly Diagram. Sew the squares together to form rows, pressing the rows in opposite directions every other row. Sew the rows together to form the block, pressing the seams open. The resulting block should measure 8-1/2" square.



Make one

**Step 5:** Repeat Step 4 to make the following



Make two



Make one



Make two



Make two

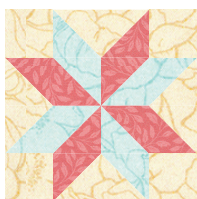


Make one

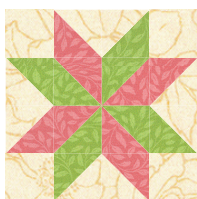


Make one

**Step 6:** Repeat Step 4, but this time with the 1-1/2" squares and HSTs to make two blocks from Fabrics E and N, as shown, and also from Fabrics E and J:



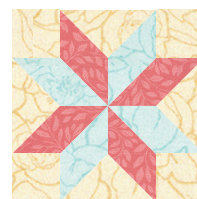
Make one



Make one



Make one



Make one

**Step 7:** For the remaining star blocks, make half-blocks, as shown:



Make two



Make two

## Assemble the Quilt

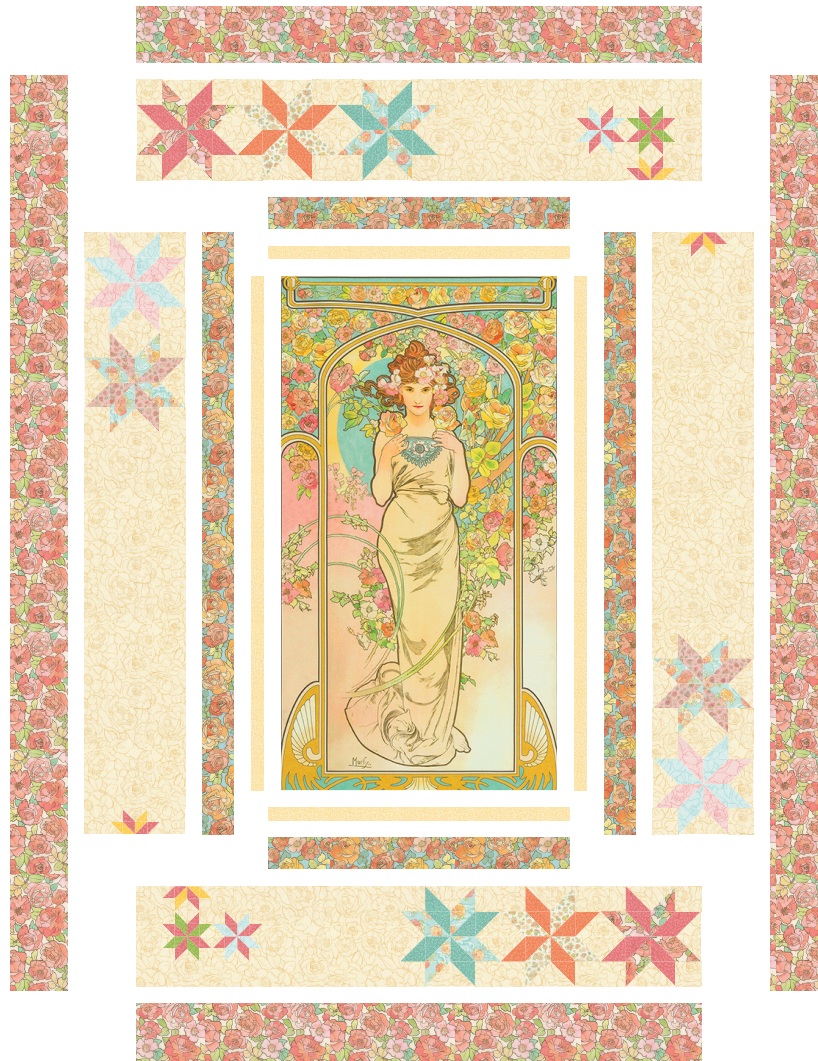
**Step 8:** Sew the Fabric B side border 1 pieces to the sides of the quilt center. Press toward the borders. Sew the Fabric B top and bottom border 1 pieces to the quilt center. Press toward the borders.

**Step 9:** Sew the Fabric C top and bottom border 2 pieces to the quilt center. Press toward the borders. Sew the Fabric C side border 2 pieces to the sides of the quilt center. Press toward the borders.

**Step 10:** Gather:

two large star blocks (from Fabrics J/K and from Fabrics H/L)  
one 8-1/2" x 30-1/2" Fabric D rectangle  
one yellow half-star block  
two 2-1/2" Fabric D squares

Sew together to form the left pieced border. Repeat to make the right pieced border. Sew to the left and right edges of the quilt center, noting the orientation of the borders.



**Step 11:** Gather:

- three large star blocks (from Fabrics E/O, Fabrics F/G and from Fabrics H/I)
- one 8-1/2" x 11-1/2" Fabric D rectangle
- one blue small star block
- one green small star block
- one yellow half-star block
- three 2-1/2" Fabric D squares
- one 2-1/2" x 6-1/2" Fabric D rectangle
- one 2-1/2" x 8-1/2" Fabric D rectangle

Sew together to form the top pieced border. Repeat to make the bottom pieced border. Sew to the top and bottom edges of the quilt center, noting the orientation of the borders.

**Step 12:** Sew the Fabric O top and bottom border 3 pieces to the quilt center. Press toward the borders. Sew the Fabric O side border 3 pieces to the sides of the quilt center. Press toward the borders.

Your quilt top is complete. Baste, quilt, bind and enjoy!

This pattern may be used for personal purposes only and may not be reproduced in any form without the express permission from Robert Kaufman Fabrics. This pattern is not for resale. All patterns, unless otherwise attributed, are © Robert Kaufman Co., Inc. 2005-2018. All rights reserved.