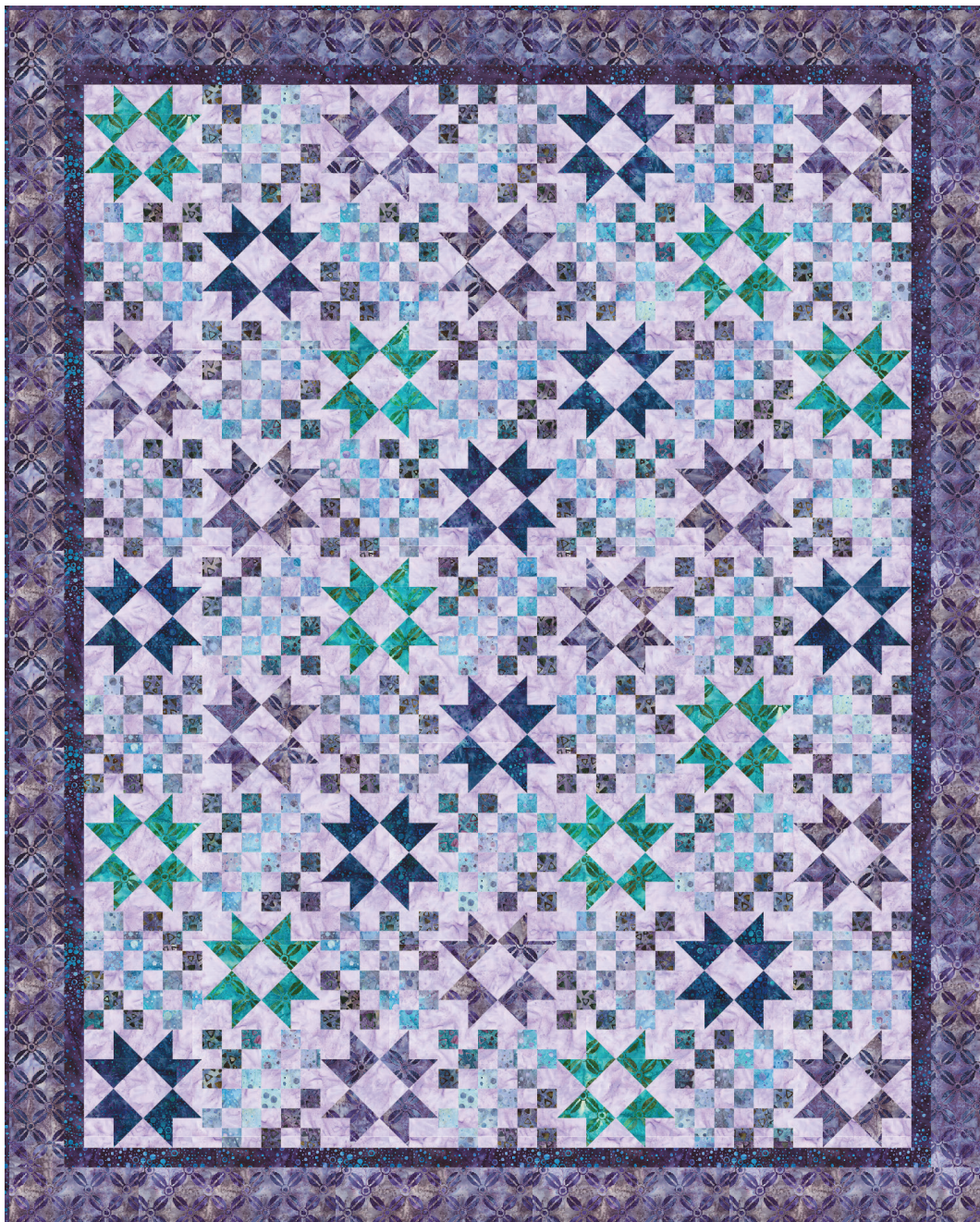


# RINGING BELLS

Designed by Ariga Mahmoudcloud for RK  
[www.robertkaufman.com](http://www.robertkaufman.com)

Featuring ARTISAN  
CUTS

Modern Twist by 



Finished quilt measures: 50" x 62"

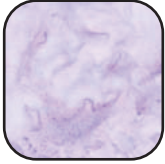


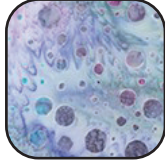




Difficulty Rating: **Intermediate**

**ROBERTKAUFMAN**  
F A B R I C S

For questions about this pattern, please email [Patterns@RobertKaufman.com](mailto:Patterns@RobertKaufman.com).

## Fabric and Supplies Needed

*Fabric amounts based on yardage that is 42" wide.*

Color	Fabric	Name/SKU	Yardage	Color	Fabric	Name/SKU	Yardage
	A	AMD-7000-23 LAVENDER	2-1/8 yards		E	AMD-19756-6 PURPLE	1/2 yard
	B	AMD-19755-213 TEAL	1/3 yard		F	AMD-19759-6 PURPLE	5/8 yard
	C	AMD-19755-6 PURPLE	1 yard		G	AMD-19760-6 PURPLE	1/4 yard
	D	AMD-19760-253 BOYSENBERRY	1/3 yard		Binding*	AMD-19760-6 PURPLE <i>*Also used for Fabric G</i>	1/2 yard
Copyright 2020, Robert Kaufman For individual use only - Not for resale				You will also need: 3-1/4 yards for backing			

## Notes Before You Begin

- Read through all of the instructions before beginning.
- All of the seam allowances are 1/4" unless otherwise noted.
- Press seam allowances open unless otherwise noted.
- Width of fabric (WOF) is equal to at least 42" wide.
- Right sides together has been abbreviated to RST.
- Remember to measure twice and cut once!

## Cutting Instructions

### **From Fabric A, cut:**

twelve 2-1/2" x WOF strips. Subcut:

one hundred ninety-two 2-1/2" squares for the A Block HSTs

seven 2" x WOF strips. Subcut:

one hundred twenty-eight 2" squares for the A Blocks

twenty-one 1-1/2" x WOF strips. Set eighteen aside for strip piecing the B Blocks. From the remaining strips, cut:

nine 1-1/2" x 10" rectangles

### **From each of Fabrics B and D, cut:**

four 2-1/2" x WOF strips. Subcut:

sixty 2-1/2" squares for the A Block HSTs

### **From Fabric C, cut:**

six 3-1/2" x WOF strips. Sew together, end-to-end, then trim:

two 3-1/2" x 56-1/2" side Border 2 strips

two 3-1/2" x 50-1/2" top/bottom Border 2 strips

four 2-1/2" x WOF strips. Subcut:

seventy-two 2-1/2" squares for the A Block HSTs

### **From Fabric E, cut:**

nine 1-1/2" x WOF strips. Set eight aside for strip piecing the B Blocks.

From the remaining strip, cut:

four 1-1/2" x 10" rectangles

### **From Fabric F, cut:**

twelve 1-1/2" x WOF strips. Set ten aside for strip piecing the B Blocks.

From the remaining strips, cut:

five 1-1/2" x 10" rectangles

### **From Fabric G, cut:**

five 1-1/2" x WOF strips. Sew together, end-to-end, then trim:

two 1-1/2" x 54-1/2" side Border 1 strips

two 1-1/2" x 44-1/2" top/bottom Border 1 strips

### **From the Binding Fabric, cut:**

six 2-1/2" x WOF strips

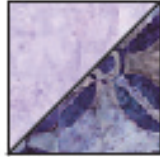


## Assemble the A Blocks

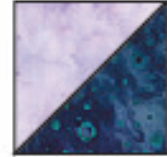
**Step 1:** Pair a 2-1/2" Fabric A square with a 2-1/2" Fabric B square, RST. Mark a diagonal line on the wrong side of one square. Sew 1/4" away from both sides of the marked line. Cut on the marked line, creating two half-square triangles (HSTs). Press toward the darker fabric. Trim to 2" square. Repeat to make one hundred twenty A/B HSTs.



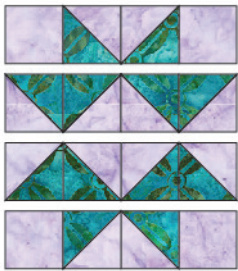
**Step 2:** Repeat Step 1 to make:



one hundred forty-four A/C HSTs



one hundred twenty A/D HSTs



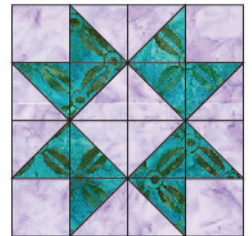
**Step 3:** Gather:  
four 2" Fabric A squares  
twelve A/B HSTs

Arrange the units into four rows of four. Note the fabric placement and block orientation in the Block Assembly Diagram.

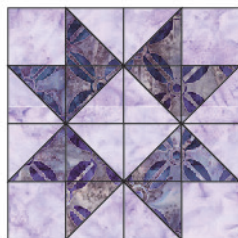
**Step 4:** Sew the squares together to form the rows. Press the seams in opposite directions every other row.

**Step 5:** Sew the rows together, nesting the seams and pressing the seams to one side to form the block.

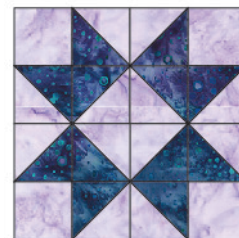
The Block should measure 6-1/2" square. Repeat Steps 3-5 to make a total of ten A Blocks from Fabric B.



**Step 6:** Repeat Steps 3-5 to make:



twelve A Blocks from Fabric C

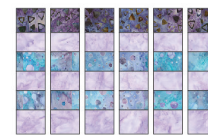
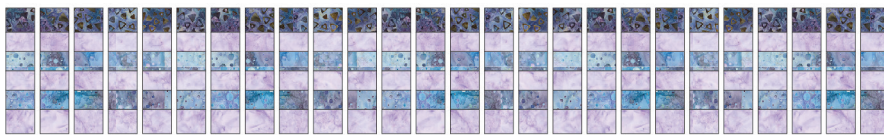


ten A Blocks from Fabric D

## Assemble the B Blocks

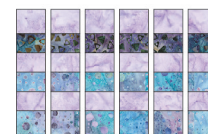
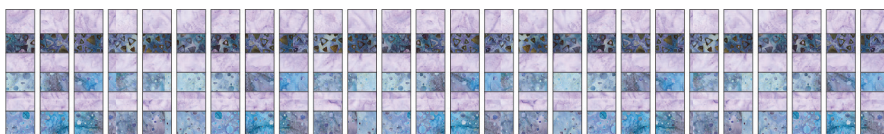
**Step 7:** Sew 1-1/2" x WOF strips together, along the longest edge, in the following order:  
Fabric E - Fabric A - Fabric F - Fabric A - Fabric F - Fabric A  
Press the seams away from Fabric A.

Repeat to make two full strip sets and one 10" long strip set like this. Cut the strip sets into 1-1/2" wide units, for a total of sixty-two units.



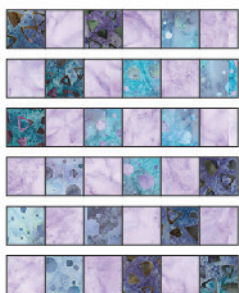
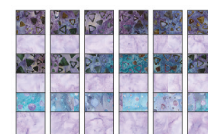
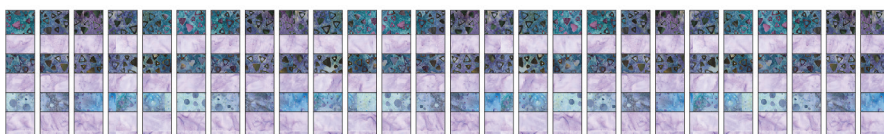
**Step 8:** Sew 1-1/2" x WOF strips together, along the longest edge, in the following order:  
Fabric A - Fabric E - Fabric A - Fabric F - Fabric A - Fabric F  
Press the seams away from Fabric A.

Repeat to make two full strip sets and one 10" long strip set like this. Cut the strip sets into 1-1/2" wide units, for a total of sixty-two units.



**Step 9:** Sew 1-1/2" x WOF strips together, along the longest edge, in the following order:  
Fabric E - Fabric A - Fabric E - Fabric A - Fabric F - Fabric A  
Press the seams away from Fabric A.

Repeat to make two full strip sets and one 10" long strip set like this. Cut the strip sets into 1-1/2" wide units, for a total of sixty-two units.

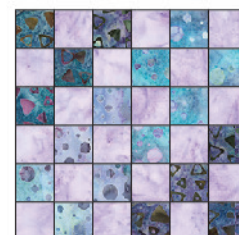


**Step 10:** Gather:  
two units from Step 7  
two units from Step 8  
two units from Step 9

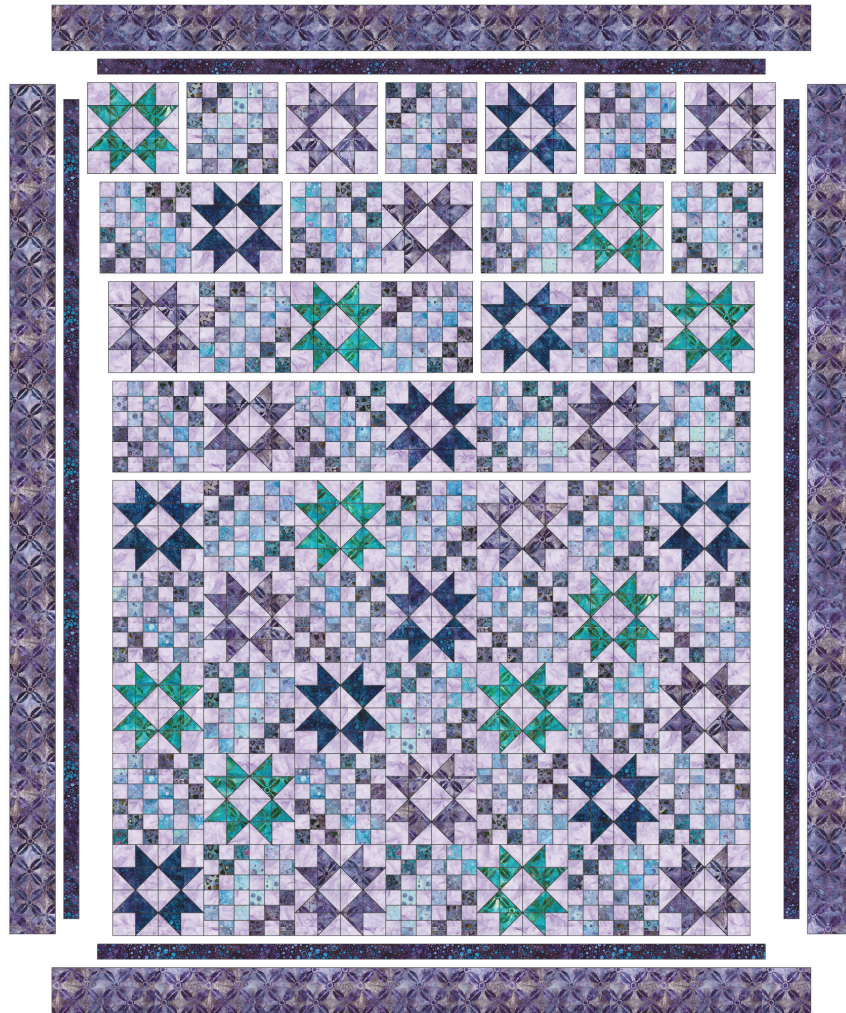
Arrange the units into six rows. Note the fabric placement and block orientation in the Block Assembly Diagram.

**Step 11:** Sew the strips together, nesting the seams, to form the B Block.  
Press the seams to one side.

The B Block should measure 6-1/2" square. Repeat Steps 10 and 11 to make a total of thirty-one B Blocks.



## Assemble the Quilt



**Step 12:** Arrange the A and B Blocks into nine rows of seven blocks. Note the fabric placement and block orientation in the Quilt Assembly Diagram.

**Step 13:** Sew the blocks together to form rows. Press the rows to the left in the odd numbered rows and to the right in the even numbered rows.

**Step 14:** Sew the rows together to form the quilt center. Press the row seams open.

**Step 15:** Sew the side Border 1 pieces to the sides of the quilt center. Press toward the borders. Sew the top and bottom Border 1 pieces to the quilt center. Press toward the borders.

**Step 16:** Sew the side Border 2 pieces to the sides of the quilt center. Press toward the borders. Sew the top and bottom Border 2 pieces to the quilt center. Press toward the borders.

Your quilt top is complete! Baste, quilt, bind and enjoy!

This pattern may be used for personal purposes only and may not be reproduced in any form without the express permission from Robert Kaufman Fabrics. This pattern is not for resale. All patterns, unless otherwise attributed, are © Robert Kaufman Co., Inc. 2005-2020. All rights reserved.