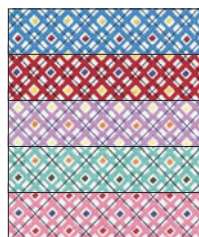
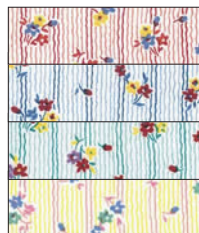


LITTLE DARLINGS and CLOTHESLINE PRINTS

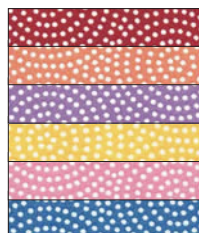
by Darlene Zimmerman



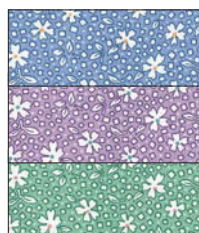
ADZ-5107-2,3,4,6,7



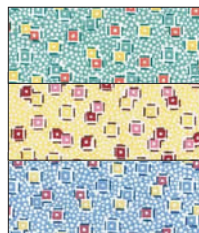
ADZ-5108-1,2,3,4



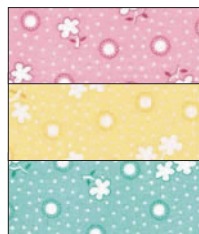
ADZ-5109-1,3,4,5,6,7



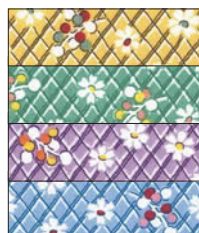
ADZ-5110-1,3,5



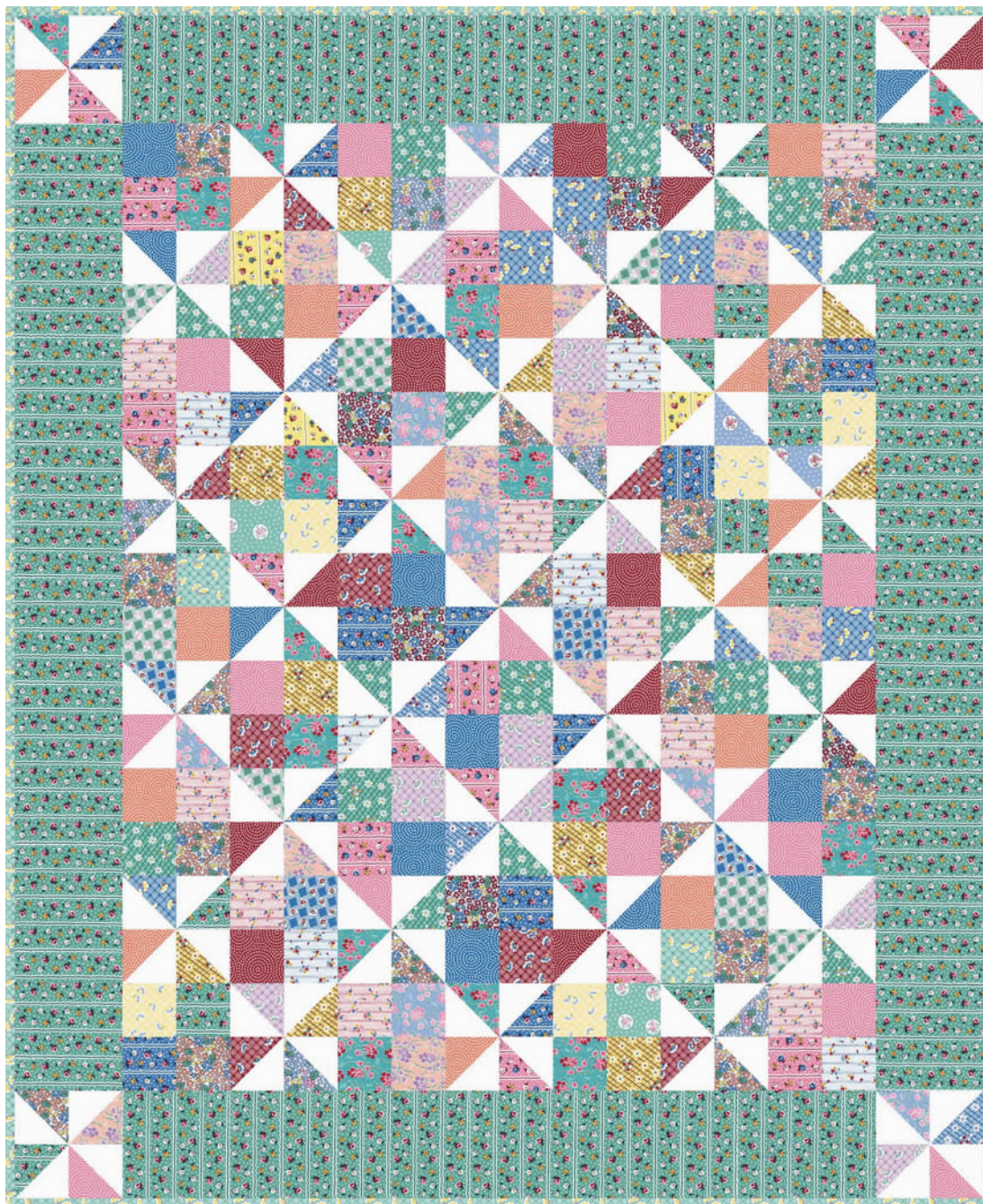
ADZ-5111-2,3,4



ADZ-5112-2,3,7



ADZ-5113-1,2,3,4



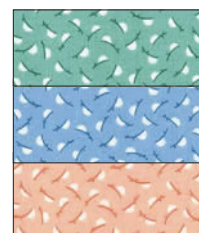
ADZ-5114-1,2,4



ADZ-5115-1,3,4,5,6,7



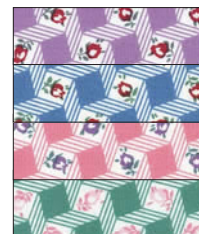
ADZ-5116-1,2,3,4



ADZ-5117-3,4,7



ADZ-5118-1,2,3,4



ADZ-5119-1,3,4,6



ADZ-5120-1,2,5,6



Seven Little Darlings patterns and seven Clothesline Prints, plus 26 1930's solid colors. All on 100% Prima Cotton®. All patterns are shown approx. 1/3 actual size.

ROBERT KAUFMAN
F A B R I C S

Pinwheel Fancy

Quilt design and instructions by Darlene Zimmerman

FINISHED QUILT SIZE: approx. 54" x 66"

FABRIC REQUIREMENTS:

Prima Cotton® Vintage White: $\frac{7}{8}$ yd.

Little Darlings and Clothesline Prints of your choice: 11 or more fat quarters

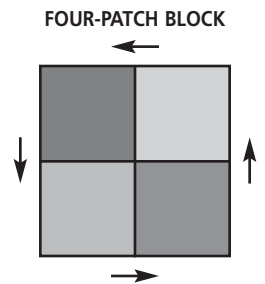
Border: 1 yd. (Darlene used Clothesline Print #ADZ-5116-1 Parsley)

Binding: $\frac{3}{4}$ yd. (Darlene used Clothesline Print #ADZ-5115-1 Aloe)

SUGGESTED TOOL: Easy Angle, EZ Quilting by Wrights

FOUR-PATCH BLOCKS:

1. From fat quarter prints, cut a total of 22 strips $3\frac{1}{2}$ " x 21". Cut into 128 squares $3\frac{1}{2}$ " x $3\frac{1}{2}$ ".
2. Sew a variety of squares together into 64 pairs. Press. Sew two pairs together to make 32 four-patch blocks. Twist the center to open a few stitches at the intersection. Press all seams in a clockwise direction. At this point, the blocks should measure $6\frac{1}{2}$ " square.



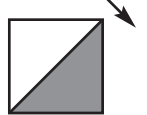
PINWHEEL BLOCKS:

1. From Vintage White, cut seven strips $3\frac{1}{2}$ " x 42". From print fat quarters cut a total of 14 strips $3\frac{1}{2}$ " x 21". Layer the white and print strips right sides together, and cut with Easy Angle to make 140 triangle pairs.

OPTIONAL: If you are not using Easy Angle, cut 70 squares $3\frac{1}{2}$ " x $3\frac{1}{2}$ " from both Vintage White and fat quarter prints. Cut all squares once on the diagonal to make triangles. Layer one white triangle with each print triangle, right sides together.

2. Sew the diagonal seams, press toward the print, and trim the dog ears. At this point, the units should measure $3\frac{1}{2}$ " square.
3. Sew the triangles together in 70 pairs as shown. Press the seams toward the print. Sew the pairs together to make 35 pinwheel blocks. Twist the center to open a few stitches at the intersection. Press all straight seams in a clockwise direction (toward the prints). At this point, the blocks should measure $6\frac{1}{2}$ " square.

PINWHEEL BLOCK
STEP 2

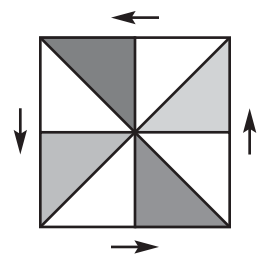


STEP 3



QUILT ASSEMBLY:

1. Sew four-patch blocks and pinwheel blocks together in nine rows of seven blocks, alternating the blocks as shown in the photo. Press the seams toward the four-patch blocks. Sew the nine rows together, and press all row seams in one direction. **NOTE:** You will have four pinwheel blocks left over.
2. Measure the quilt width. Cut two top and bottom borders $6\frac{1}{2}$ " wide by this measurement. Measure the quilt length. Cut and piece two side borders $6\frac{1}{2}$ " wide by this measurement.
3. Sew top and bottom borders to the quilt, and press the seams toward the borders. Sew one remaining pinwheel block to each end of the side borders, and press the seams toward the borders. Sew side borders to the quilt, and press the seams toward the borders.



FINISHING:

1. Layer quilt top, batting, and backing. Quilt in the ditch between blocks, through the centers of all blocks, and on the diagonals of pinwheel blocks. Quilt the border along the lines in the print. Before binding, hand-baste a scant $\frac{1}{4}$ " from the edges to keep the layers from shifting.
2. For binding, cut bias strips $2\frac{1}{4}$ " wide and totaling at least 245" in length. Join ends of the bias strips in $\frac{1}{4}$ " seams, and press in half lengthwise, right sides out. Sew binding to the quilt using a $\frac{1}{4}$ " seam. Trim excess batting and backing. Turn binding to the back of the quilt, and stitch down by hand with matching thread.