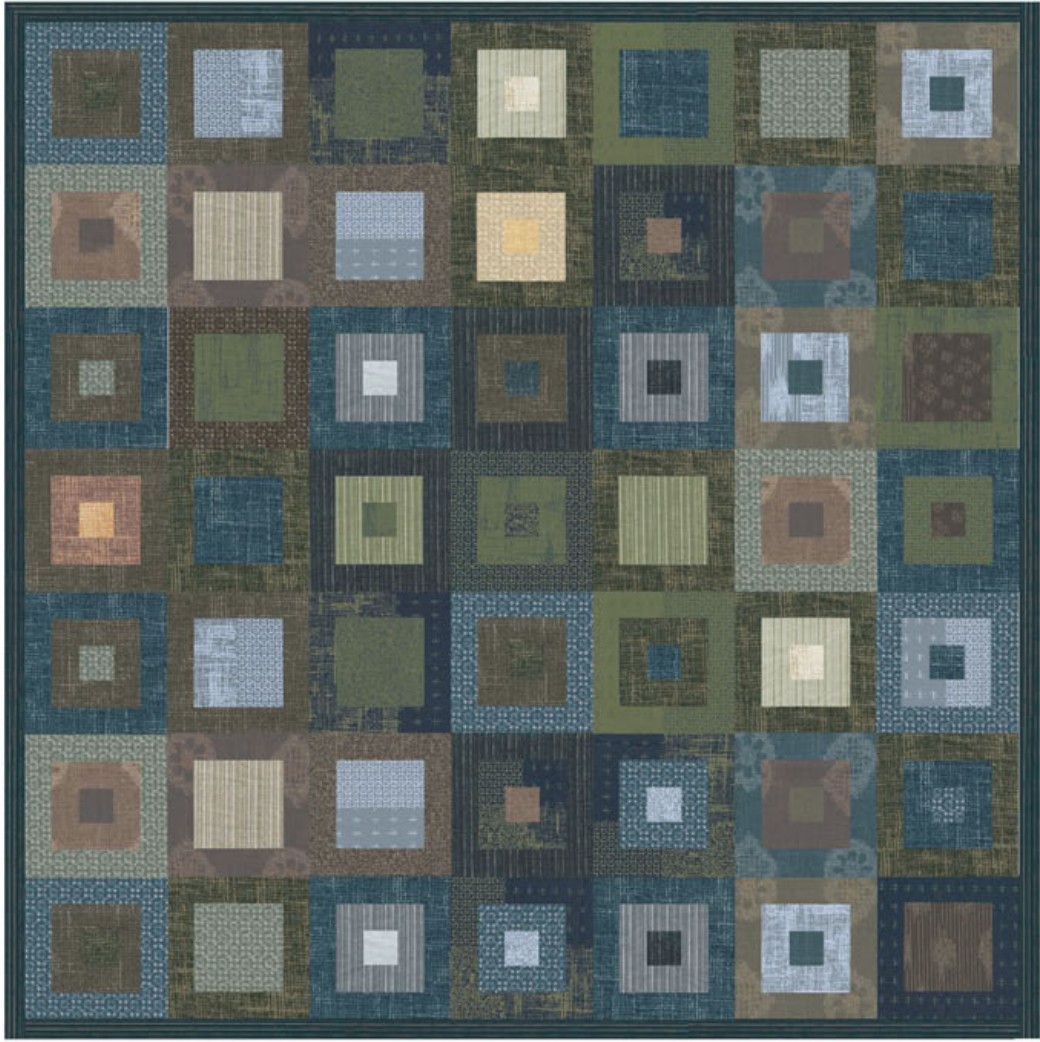
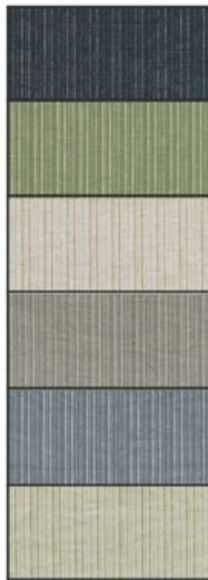


KASURIGESHIKI

「絣 景 色」



KGT 751109RK:
1,3,4,5,6,7,8,9



KGT 751102RK:
3,5,8,9,10,11



KGT 751101 RK:
1,3,4,6



KGT 751108 RK:
1,3,8,9,10



KGT751107 RK:
1,2,4,6,7

ROBERT KAUFMAN
F A B R I C S

KASURI GESIKI
LOG CABIN QUILT
 Finished Size 38" x 38"
 Finished Block 5" x 5"

Fabric Requirements

Logs and Block Center – 1/4 yard of 9 or more Kasuri Gesiki fabrics of your choice. Cut 4 - 5 strips 1 1/2" wide from each of the fabrics. Cut the center square and different log lengths from each of the fabric strips. There should be a variety log lengths cut from each of the nine fabrics. See photo as a guide.

Border – 3/8 yard extra of one of the 9 fabrics. Cut 4 strips 2" wide.

Binding – 1/2 yard. Cut 5 strips 2 1/4" wide.

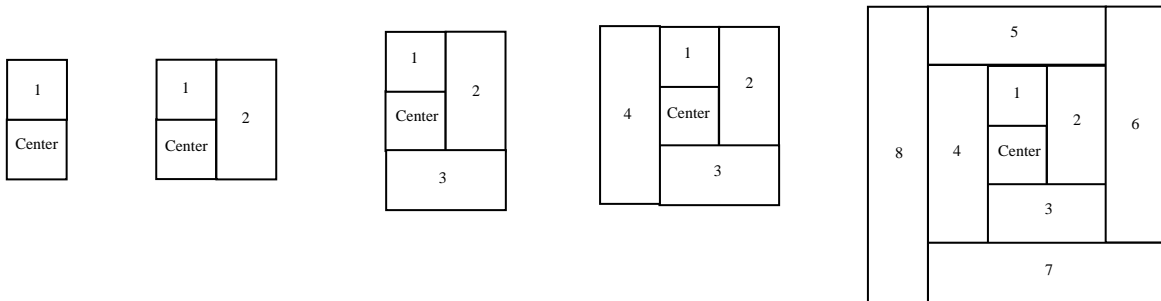
Backing – 1 1/4 yard.

Ctr. Sq.	Cut 49 squares 1 1/2" x 1 1/2"
Log # 1	Cut 49 squares 1 1/2" x 1 1/2"
Log # 2	Cut 49 squares 1 1/2" x 2 1/2"
Log # 3	Cut 49 squares 1 1/2" x 2 1/2"
Log # 4	Cut 49 squares 1 1/2" x 3 1/2"

Log # 5	Cut 49 squares 1 1/2" x 3 1/2"
Log # 6	Cut 49 squares 1 1/2" x 4 1/2"
Log # 7	Cut 49 squares 1 1/2" x 4 1/2"
Log # 8	Cut 49 squares 1 1/2" x 5 1/2"

Log Cabin Construction

Press the seams away from the center of the block. With right sides together sew log #1 to the center square. Turning the block in a clockwise direction sew on the remaining logs in sequence as illustrated. Make 49 blocks. See photo for fabric placement.



Quilt Assembly

Sew blocks into 7 rows consisting of 7 blocks per row.

Join rows together.

Border (If your measurements are different, cut to you measurements)

Cut 2 of the 2" wide border strips down to measure 2" x 35 1/2" and sew to the top and bottom of the quilt. Cut the 2 remaining border strips down to measure 2" x 38 1/2" and sew to the sides of the quilt.

Finishing

Layer and baste quilt top. Quilt as desired. Bind.