

PYRAMID CROSSING

Designed by Jody Leonardo for RK
www.robertkaufman.com

Featuring ARTISAN
BATIKS

Marshland Lynn

Fat Quarter
Friendly



Finished quilt measures: 70" x 84"





Difficulty Rating: **Intermediate**

ROBERTKAUFMAN
F A B R I C S

For questions about this pattern, please email Patterns@RobertKaufman.com.

Fabric and Supplies Needed

Fabric amounts based on yardage that is 42" wide.

Color	Fabric	Name/SKU	Yardage	Color	Fabric	Name/SKU	Yardage
		FQ-1984-22 MARSHLAND	One Fat Quarter Bundle		B	AMD-7000-78 PEACOCK	2-1/4 yards
	A	AMD-21723-14 NATURAL	1-7/8 yards		Binding*	AMD-21718-59 OCEAN <i>*Also included in the Fat Quarter Bundle</i>	5/8 yard
Copyright 2023, Robert Kaufman For individual use only - Not for resale				You will also need: 5-1/8 yards for backing			

Notes Before You Begin

- Read through all of the instructions before beginning.
- All of the seam allowances are 1/4" unless otherwise noted.
- Press seam allowances open unless otherwise noted.
- Width of fabric (WOF) is equal to at least 42" wide.
- Right sides together has been abbreviated to RST.
- Remember to measure twice and cut once!

Cutting Instructions

From each Fat Quarter in your bundle, cut:

four or five 2-1/2" x WOF strips for a total of ninety strips.

From each of sixty strips, subcut:

one 2-1/2" x 6-1/2" rectangles and one 2-1/2" x 14-1/2" rectangle
for a total of sixty rectangles of each size.

From each of thirty strips, subcut:

two 2-1/2" x 10-1/2" rectangles for a total of sixty.

From Fabric A, cut:

twenty-five 2-1/2" x WOF strips. Subcut:

three-hundred and ninety 2-1/2" squares.

From Fabric B, cut:

thirty 2-1/2" x WOF strips. Subcut:

sixty 2-1/2" squares.

sixty 2-1/2" x 6-1/2" rectangles.

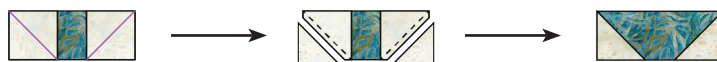
sixty 2-1/2" x 10-1/2" rectangles.

From the Binding Fabric, cut:

nine 2-1/2" x WOF strips.

Assemble the Flip and Stitch Units

Step 1: Gather one 2-1/2" x 6-1/2" rectangle cut from a fat quarter and two 2-1/2" Fabric A squares. Place the squares on each end of the rectangle, then mark a diagonal line across each square as shown. Sew on the marked lines, then trim the excess fabric 1/4" away from the sewn seams. Press the seams towards the darker fabric. Make sixty 2-1/2" x 6-1/2" units.



Step 2: Gather one 2-1/2" x 10-1/2" rectangle cut from a fat quarter and two 2-1/2" Fabric A squares. Place the squares on each end of the rectangle, then mark a diagonal line across each square as shown. Sew on the marked lines, then trim the excess fabric 1/4" away from the sewn seams. Press the seams towards the darker fabric. Make sixty 2-1/2" x 10-1/2" units.



Step 3: Gather one 2-1/2" x 14-1/2" rectangle cut from a fat quarter and two 2-1/2" Fabric A squares. Place the squares on each end of the rectangle, then mark a diagonal line across each square as shown. Sew on the marked lines, then trim the excess fabric 1/4" away from the sewn seams. Press the seams towards the darker fabric. Make sixty 2-1/2" x 14-1/2" units.



Assemble the Blocks

Note: See the Quilt Assembly Diagram on page 5 for specific fabric combinations when making your blocks.

Step 4: Gather:

one 2-1/2" Fabric A square

two 2-1/2" Fabric B squares

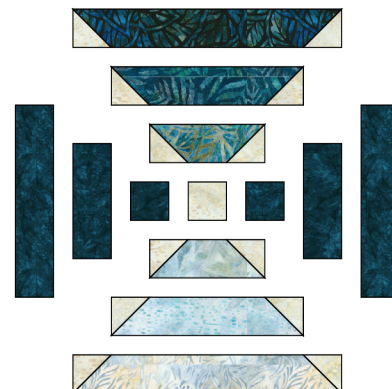
two 2-1/2" x 6-1/2" Fabric B rectangles

two 2-1/2" x 10-1/2" Fabric B rectangles

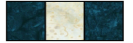
two Step 1 units

two Step 2 units

two Step 3 units



Step 5: Sew the Fabric A square between the two Fabric B squares, then press the seams towards the Fabric B squares.



Step 6: Sew the two Step 1 units to the top and bottom edges of the unit. Press the seams towards the Step 1 units.



Step 7: Sew the two 2-1/2" x 6-1/2" Fabric B rectangles to the left and right edges of the unit. Press the seams towards the rectangles.



Step 8: Sew the two Step 2 units to the top and bottom edges of the unit. Press the seams towards the Step 2 units.



Step 9: Sew the two 2-1/2" x 10-1/2" Fabric B rectangles to the left and right edges of the unit. Press the seams towards the rectangles.

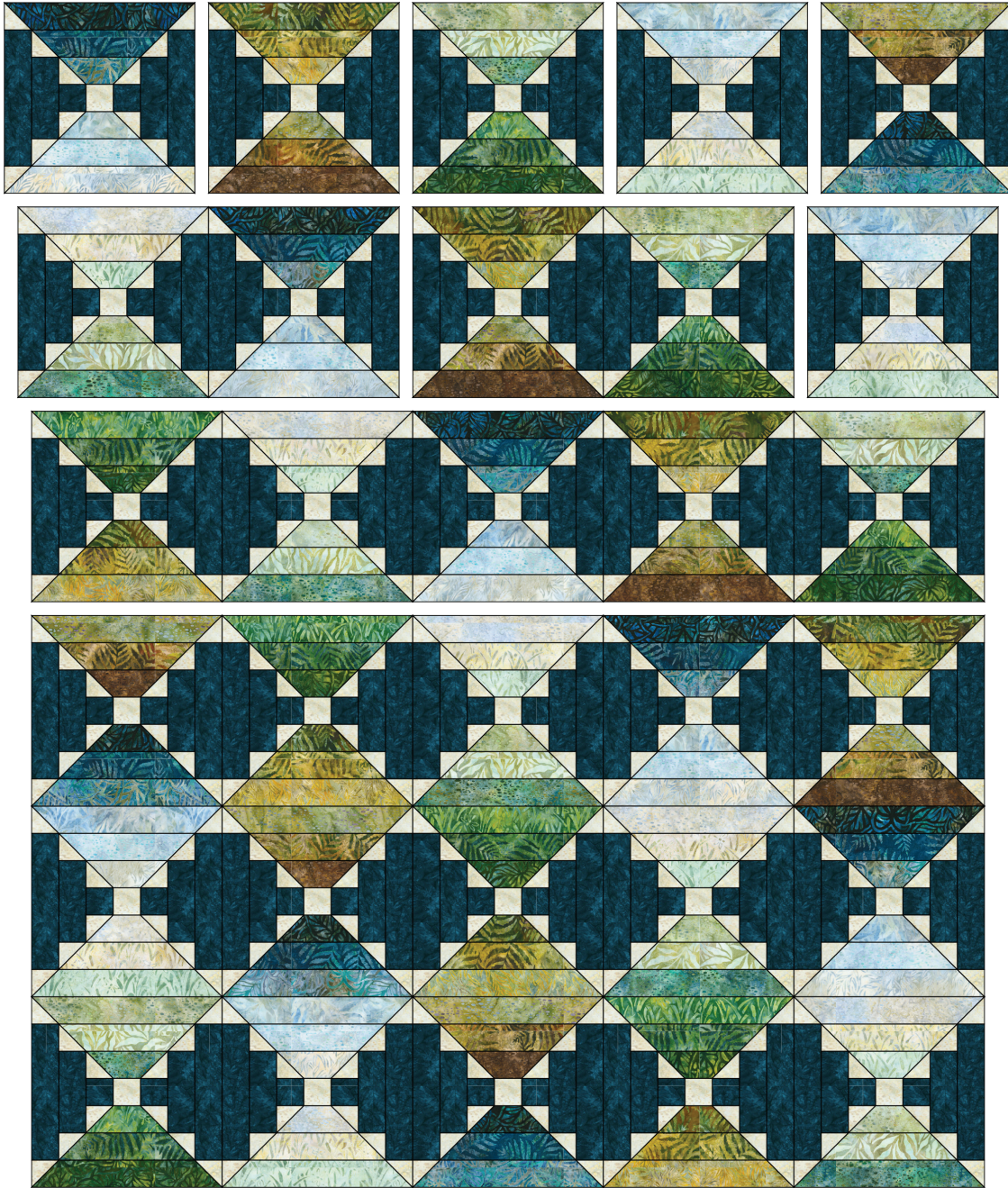


Step 10: Sew the Step 3 units to the top and bottom edges of the unit. Press the seams towards the Step 3 units.



Step 11: Repeat Steps 4-10 to make thirty blocks. Consult the Quilt Assembly Diagram on page 5 for the specific fabric pairings used to create the sample quilt.

Assemble the Quilt



Step 12: Arrange the blocks into six rows of five blocks. Note the fabric placement and block orientation in the Quilt Assembly Diagram.

Step 13: Sew the blocks together to form rows. Press the seams to the left in the odd-numbered rows and to the right in the even-numbered rows.

Step 14: Sew the rows together to form the quilt center. Press the row seams open.

Your quilt top is complete! Baste, quilt, bind, and enjoy!

This pattern may be used for personal purposes only and may not be reproduced in any form without the express permission from Robert Kaufman Fabrics. This pattern is not for resale. All patterns, unless otherwise attributed, are © Robert Kaufman Co., Inc. 2005-2023. All rights reserved.