

POM POM PILLOWS

Designed by Robert Kaufman Fabrics

Featuring

girl friends
Ann Kelle



Finished project measures: 10" x 10"



Pattern Level: Enthusiastic Novice

"I am a total beginner and want to learn more!"

ROBERT KAUFMAN
F A B R I C S

Fabric and Supplies Needed

Fabric amounts based on yardage that is 40" wide.

Color	Fabric	Name/SKU	Yardage	Color	Fabric	Name/SKU	Yardage
	A	AAK-15435-195 BRIGHT	1 panel		B	AAK-10394-147 TANGERINE	2/3 yard
Copyright 2015, Robert Kaufman For individual use only - Not for resale				You will also need: Pom pom trim (option 1) 10" square pillow form			

Notes Before You Begin

- Read through all of the instructions before beginning.
- All of the seam allowances are 1/4" unless otherwise noted.
- Press seam allowances open unless otherwise noted.
- Width of fabric (WOF) is equal to at least 40" wide.
- Right sides together has been abbreviated to RST
- Remember to measure twice and cut once!

Cutting Instructions

WOF = width of fabric

Fabric A

11" x 11", fussy cut centered around each figure.

Fabric B (for each pillow)

Cut two 7" x 11" rectangles

Pom Pom Trim (for each pillow)

Cut one 45" length of trim

Assemble the Pillows

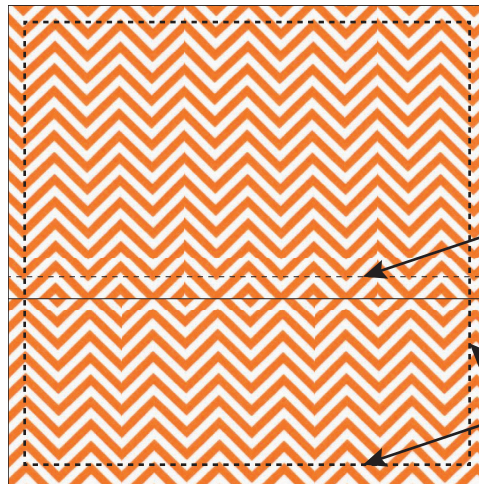
Fold and press one long edge of each Fabric B piece 1/2" to the wrong side of the fabric. Repeat, folding another 1/2". Sew along the inner edge of the fold.



Place Fabric A piece right side up on work surface. Starting at center of bottom edge and leaving a 2" tail, pin trim to the right side of Fabric A. Pom poms should be placed so that they fall to the center of the pillow. Both trim tails should be positioned to fall outside the edge of the pillow. Baste the trim in place with a 1/4" seam.

Place one Fabric B piece on top, RST with the panel and aligned with the top and side edges. Pin in place. Repeat with remaining Fabric B piece, aligning with the bottom and side edges. Pin in place. Fabric B pieces will overlap through the center of the pillow. The pom poms should be sandwiched between Fabrics A and B.

Sew around entire pillow, using 1/2" seam allowance. The bulk of the trim will make this a bit tricky, so a zipper foot is recommended.



Seam from first step

1/2" seam allowance

Turn pillow right side out and stuff with a 10" square pillow form.

Optional Finish

Use piping instead of pom poms for an alternate look.

