

PARTY GIRLS

Designed by Robert Kaufman Fabrics Featuring
www.robertkaufman.com

girl friends
Ann Kelle



Finished quilt measures: 55" x 75"

Pattern Level: Experienced Intermediate





"I know the ropes and would like to test my skills!"

ROBERT KAUFMAN
F A B R I C S

For questions about this pattern, please email Patterns@RobertKaufman.com.

Fabric and Supplies Needed

Fabric amounts based on yardage that is 43" wide.

Color	Fabric	Name/SKU	Yardage	Color	Fabric	Name/SKU	Yardage
	A	AAK-16982-203 CELEBRATION	2/3 yard (one panel)		G	AAK-16984-10 PINK	1/2 yard
	B	AAK-16981-110 HOT PINK	1/3 yard		H	AAK-16983-205 MULTI	1/4 yard
	C	AAK-16981-195 BRIGHT	2 yards		I	AAK-16981-263 RAINBOW	1/4 yard
	D	AAK-16985-10 PINK	1/2 yard		J	AAKM-16983-2 BLACK	1/8 yard
	E	AAK-16984-4 BLUE	1/2 yard		K	AAKM-16981-2 BLACK	1/8 yard
	F	AAK-16985-4 BLUE	1/2 yard		Binding*	AAK-16981-110 HOT PINK <i>*Also used for Fabric B</i>	5/8 yards
<p>Copyright 2017, Robert Kaufman For individual use only - Not for resale</p>				<p>You will also need: 3-1/2 yards for backing</p>			

Notes Before You Begin

- Read through all of the instructions before beginning.
- All of the seam allowances are 1/4" unless otherwise noted.
- Press seam allowances open unless otherwise noted.
- Width of fabric (WOF) is equal to at least 43" wide.
- Right sides together has been abbreviated to RST.
- Remember to measure twice and cut once!

Cutting Instructions

From Fabric A, fussy cut:

one 20-1/2" x 40-1/2" center panel

From Fabric B, cut:

four 2-1/2" x WOF strips. Sew together, end-to-end, then trim to yield:

two 2-1/2" x 20-1/2" top and bottom inner borders

two 2-1/2" x 44-1/2" side inner borders

From Fabric C, cut:

five 3-1/2" x WOF strips. Sew four strips together, end-to-end, then trim to yield:

two 3-1/2" x 24-1/2" top and bottom outer borders

two 3-1/2" x 50-1/2" side outer borders

from the remaining strip, subcut:

twelve 3-1/2" squares. Cut each square in half along one diagonal.

one 3-1/8" x WOF strip. Subcut:

twelve 3-1/8" squares

three 7-1/8" x WOF strips. Subcut:

eighteen 7-1/8" squares. Cut each square in half along one diagonal.

twelve of Template 2

From each of Fabrics D and E, cut:

one 9-3/8" x WOF strip. Subcut:

eight 4-1/8" x 9-3/8" rectangles.

two of Template 1

From each of Fabrics F and G, cut:

one 9-3/8" x WOF strip. Subcut:

four 4-1/8" x 9-3/8" rectangles.

four of Template 1

From Fabric H, cut:

two 2" x WOF strips. Subcut:

five 2" x 9-3/8" rectangles.

Trim the remainder of the second strip to 1-7/8" wide, then cut:

three 1-7/8" squares. Cut each square in half along one diagonal. (Discard one triangle)

one 1-1/2" x WOF strip. Subcut:

ten 1-1/2" x 3-1/8" rectangles

From Fabric I, cut:

one 2" x WOF strip. Subcut:

three 2" x 9-3/8" rectangles.

Trim the remainder of the strip to 1-7/8" wide, then cut:

two 1-7/8" squares. Cut each square in half along one diagonal. (Discard one triangle)

one 1-1/2" x WOF strip. Subcut:

six 1-1/2" x 3-1/8" rectangles

From each of Fabrics J and K, cut:

one 2" x WOF strip. Subcut:

two 2" x 9-3/8" rectangles.

Trim the remainder of the strip to 1-7/8" wide, then cut:

one 1-7/8" square. Cut the square in half along one diagonal.

Trim the remainder of the strip to 1-1/2" wide, then cut:

four 1-1/2" x 3-1/8" rectangles

From the Binding Fabric, cut:

seven 2-1/2" x WOF strips

Assemble the Gift Blocks

Note: The following instructions are specific to Block 1. Construction is the same process for the remaining blocks. Refer to the Quilt Assembly Diagram for fabric placement.

Step 1: Sew a 4-1/8" x 9-3/8" Fabric D rectangle to either edge of a 2" x 9-3/8" Fabric H rectangle.



Step 2: Sew a 1-7/8" Fabric H triangle to the right end of one 1-1/2" x 3-1/8" Fabric H rectangle. Press.



Step 3: Sew one 1-1/2" x 3-1/8" Fabric H rectangle to the right edge of a 3-1/8" Fabric C square. Press.



Step 4: Sew the completed Step 2 unit to the bottom edge of the Step 3 unit, noting the placement and orientation in the illustration. Press.



Step 5: Sew two 3-1/2" Fabric C triangles to the right and bottom edges of the unit, noting the placement and orientation in the illustration. Press.



Step 6: Sew the completed Step 5 unit to the top edge of the completed Step 1 unit, noting the orientation of the block. Press.



Step 7: Sew one 7-1/8" Fabric C triangle to each of the remaining edges of the unit. Press.



Trim the block to 13" square, if needed.

Repeat Steps 1-7 to complete each of the remaining gift blocks, referring to the Quilt Assembly Diagram for fabric pairings.

Assemble the Hourglass Blocks

Note: The following instructions are specific to Block 1. Construction is the same process for the remaining blocks. Refer to the Quilt Assembly Diagram for fabric placement.

Step 8: Gather:

- two Fabric C/Template 1 pieces
- one Fabric F/Template 2 piece
- one Fabric G/Template 2 piece

Arrange following the diagram shown.



Step 9: Sew one Template 1 to an adjacent Template 2. Repeat for the remaining two pieces. Press both pairs toward Fabric C. Sew the two halves together, pressing the seam open. Trim to 10-1/2" x 13", if necessary.

Repeat Steps 8 and 9 for the remaining hourglass blocks, referring to the Quilt Assembly Diagram (QAD) for fabric pairings.

Assemble the Quilt



Step 10: Sew the Fabric B top and bottom inner borders to the Fabric A panel. Press toward the borders. Sew the Fabric B side inner borders to the sides of the quilt center. Press toward the borders.

Step 11: Sew the Fabric C top and bottom outer borders to the quilt center. Press toward the borders. Sew the Fabric C side outer borders to the sides of the quilt center. Press toward the borders.

Step 12: Sew three hourglass blocks together to form the top border, as shown in the QAD. Press the seams open. Repeat to make the bottom hourglass border. Sew to the top and bottom of the quilt center, pressing toward the quilt center.

Step 13: Sew six gift blocks together to form the left border, as shown in the QAD. Note the orientation of each block. Press. Repeat to make the right border. Sew to the sides of the quilt center, pressing toward the quilt center.

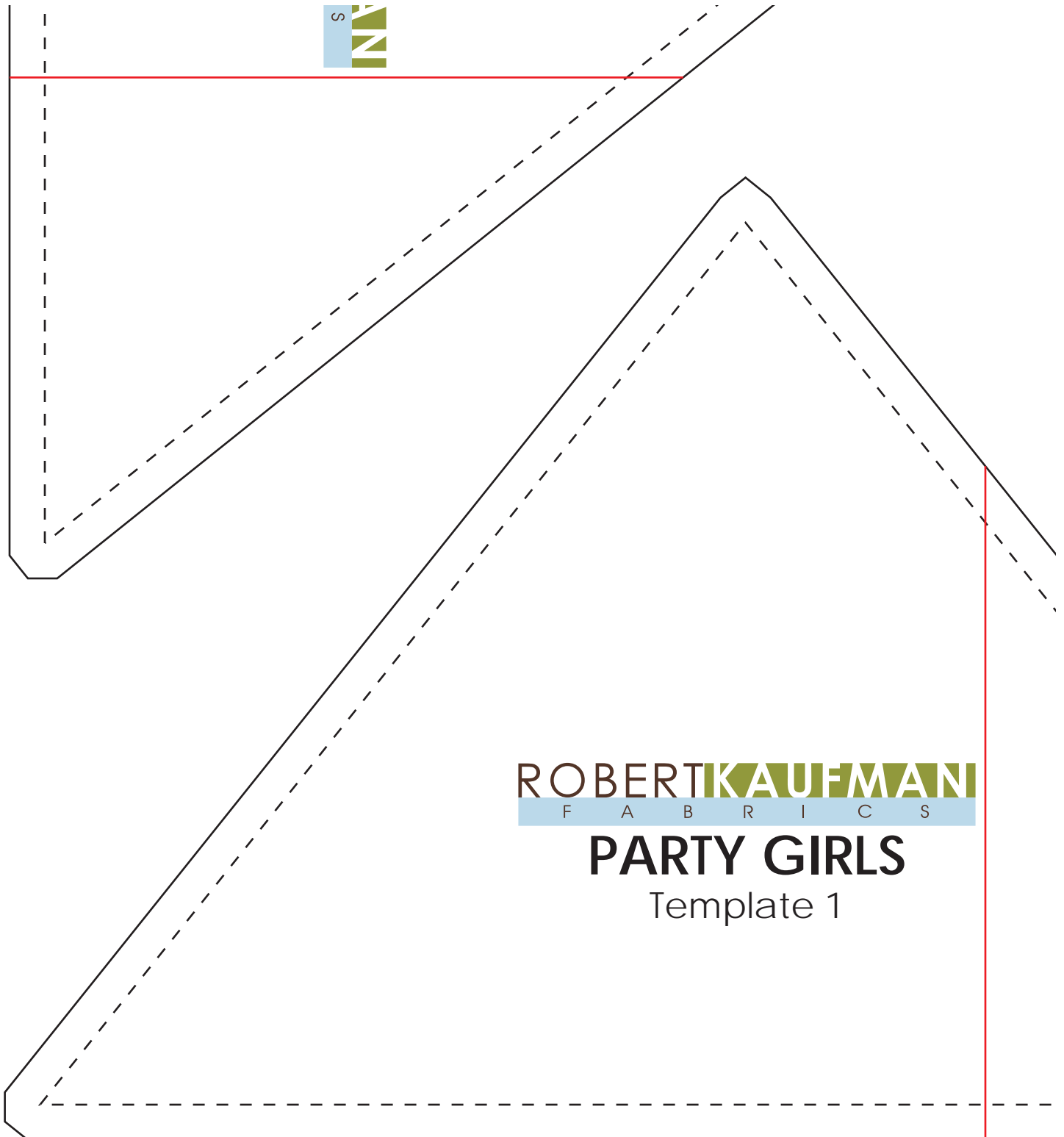
Your quilt top is complete! Baste, quilt, bind and enjoy!

Templates

Print at 100%. Check 1" test square for accuracy.

Align two pieces of each template along red line. Tape together.

1" box for
scale



ROBERT KAUFMAN
F A B R I C S

PARTY GIRLS

Template 1

1" box for
scale

ROBERT KAUFMAN
F A B R C

PARTY GIRLS
Template 2

ROBERT KAUFMAN
F A B R C

PARTY GIRL
Template 2