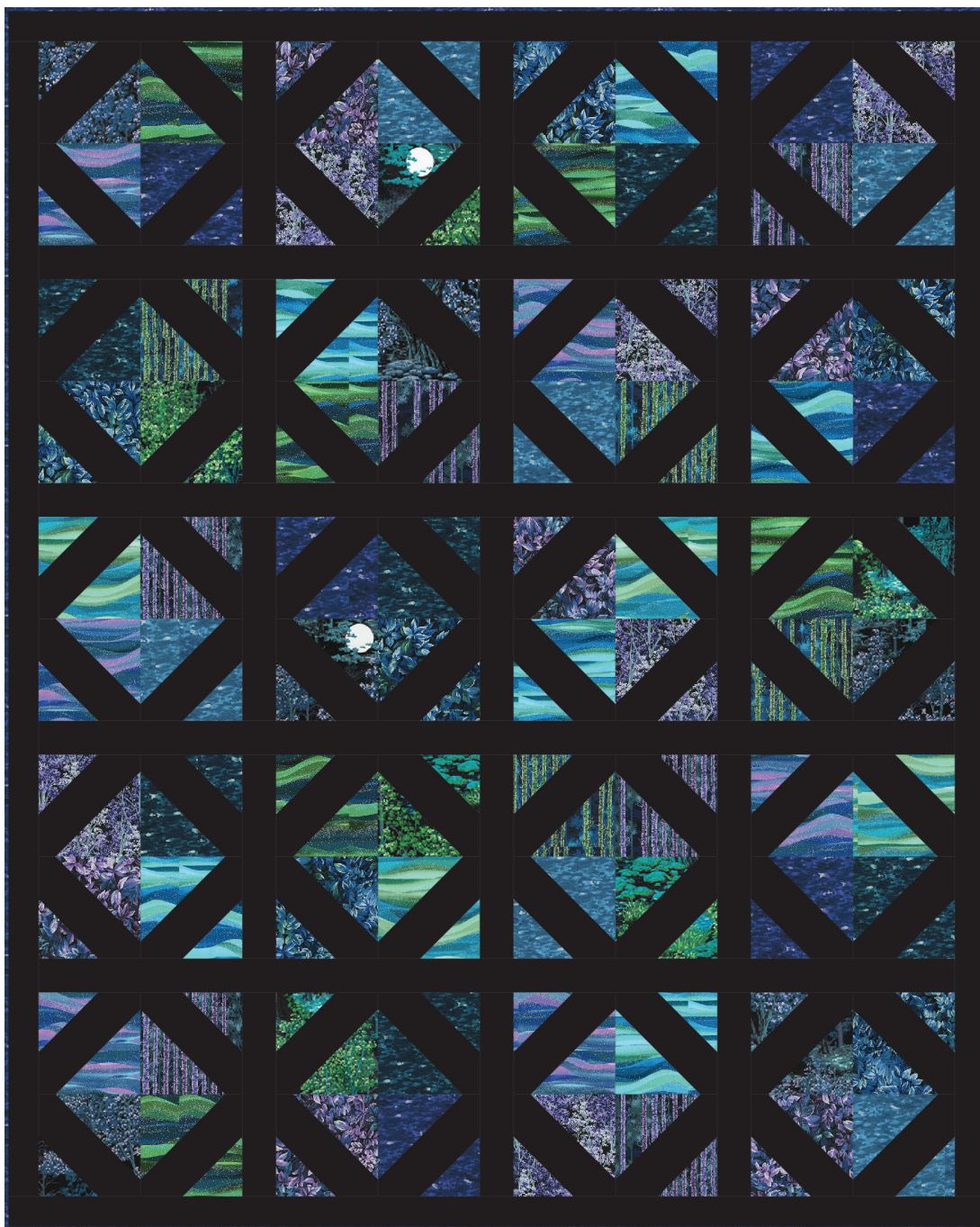


OVERVIEW

Designed by Ariga Mahmoudlou for RK
www.robertkaufman.com

Featuring *In the Moonlight* 



Finished quilt measures: 58" x 72"


Difficulty Rating: **Beginner**

ROBERTKAUFMAN
F A B R I C S

For questions about this pattern, please email Patterns@RobertKaufman.com.

Fabric and Supplies Needed

Fabric amounts based on yardage that is 42" wide.

Color	Fabric	Name/SKU	Yardage	Color	Fabric	Name/SKU	Yardage
	A	K001-1019 BLACK	3-3/4 yards		I	SRKM-20021-403 TEAL BLUE	1/3 yard
	B	SRKM-20016-312 STARRY NIGHT	1/3 yard		J	SRKM-20016-80 EVENING	1/3 yard
	C	SRKM-20021-80 EVENING	1/3 yard		K	SRKM-20020-80 EVENING	1/3 yard
	D	SRKM-20020-44 FOREST	1/3 yard		L	SRKM-20018-63 SKY	1/3 yard
	E	SRKM-20019-80 EVENING	1/3 yard		M	SRKM-20018-71 LAGOON	1/3 yard
	F	SRKM-20018-21 LILAC	1/3 yard		N	SRKM-20021-44 FOREST	1/3 yard
	G	SRKM-20017-80 EVENING	1/3 yard		O	SRKM-20017-44 FOREST	1/3 yard
	H	SRKM-20018-44 FOREST	1/3 yard		Binding* *Also used for Fabric C	SRKM-20021-80 EVENING	1/2 yard
<p>Copyright 2021, Robert Kaufman For individual use only - Not for resale</p>				<p>You will also need: 3-2/3 yards for backing</p>			

Notes Before You Begin

- Read through all of the instructions before beginning.
- All of the seam allowances are 1/4" unless otherwise noted.
- Press seam allowances open unless otherwise noted.
- Width of fabric (WOF) is equal to at least 42" wide.
- Right sides together has been abbreviated to RST.
- Remember to measure twice and cut once!

Cutting Instructions

Note: If you wish to mimic the look of the cover image exactly, cut all of Fabrics B-O using the instructions below for Fabrics F-O. This will give you extra pieces to be able to match the cover exactly. Additionally, you will want to cut four extra Fabric A squares. Doing this method, you will have four extra Step 2 units to use when laying out your quilt. No extra yardage is needed for this option.

From Fabric A, cut:

fourteen 6-1/2" x WOF strips. Subcut:
 eighty 6-1/2" squares for the block units
sixteen 2-1/2" x WOF strips. Sew together, end-to-end, then trim:
 fifteen 2-1/2" x 12-1/2" block sashing strips
 four 2-1/2" x 54-1/2" row sashing strips
 two 2-1/2" x 68-1/2" side outer borders
 two 2-1/2" x 58-1/2" top/bottom outer borders

From each of Fabrics B-E, cut:

one 5-1/2" x WOF strip. Subcut:
 five 5-1/2" squares
one 4" x WOF strip. Subcut:
 five 4" squares

From each of Fabrics F-O, cut:

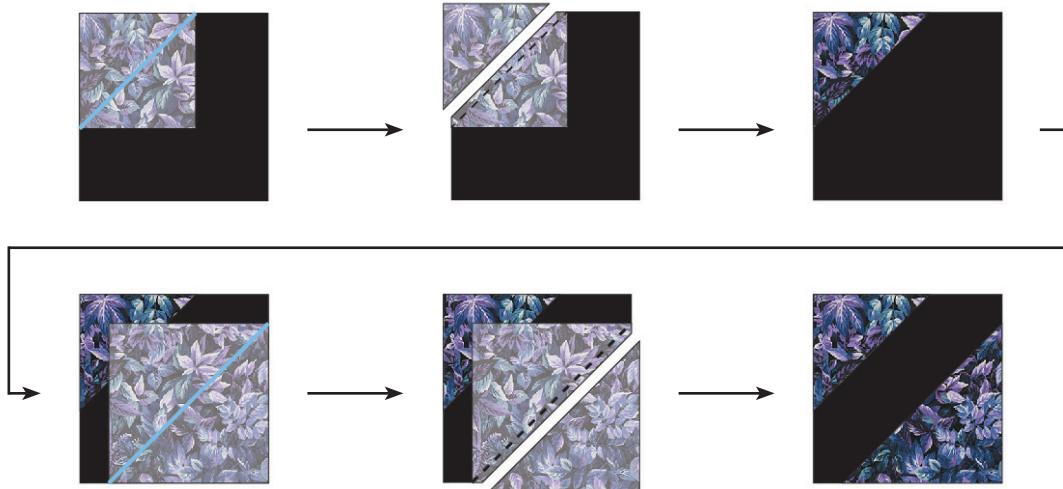
one 5-1/2" x WOF strip. Subcut:
 six 5-1/2" squares
one 4" x WOF strip. Subcut:
 six 4" squares

From the Binding Fabric, cut:

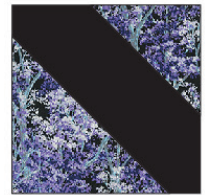
seven 2-1/2" x WOF strips

Assemble the Blocks

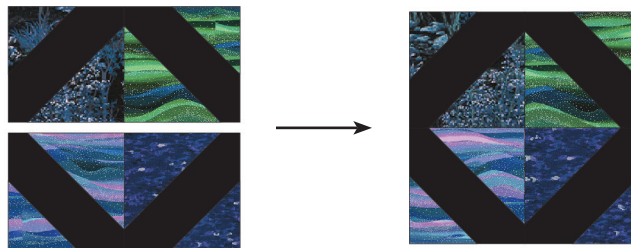
Step 1: Place a 4" Fabric B square in the upper left corner of a Fabric A square, right sides together. Mark a diagonal line on the smaller square, as shown. Sew on the marked line, then trim away the excess fabric, leaving a 1/4" seam allowance. Press. Repeat on the lower left corner with a 5-1/2" Fabric B square, noting the orientation of the marked line.



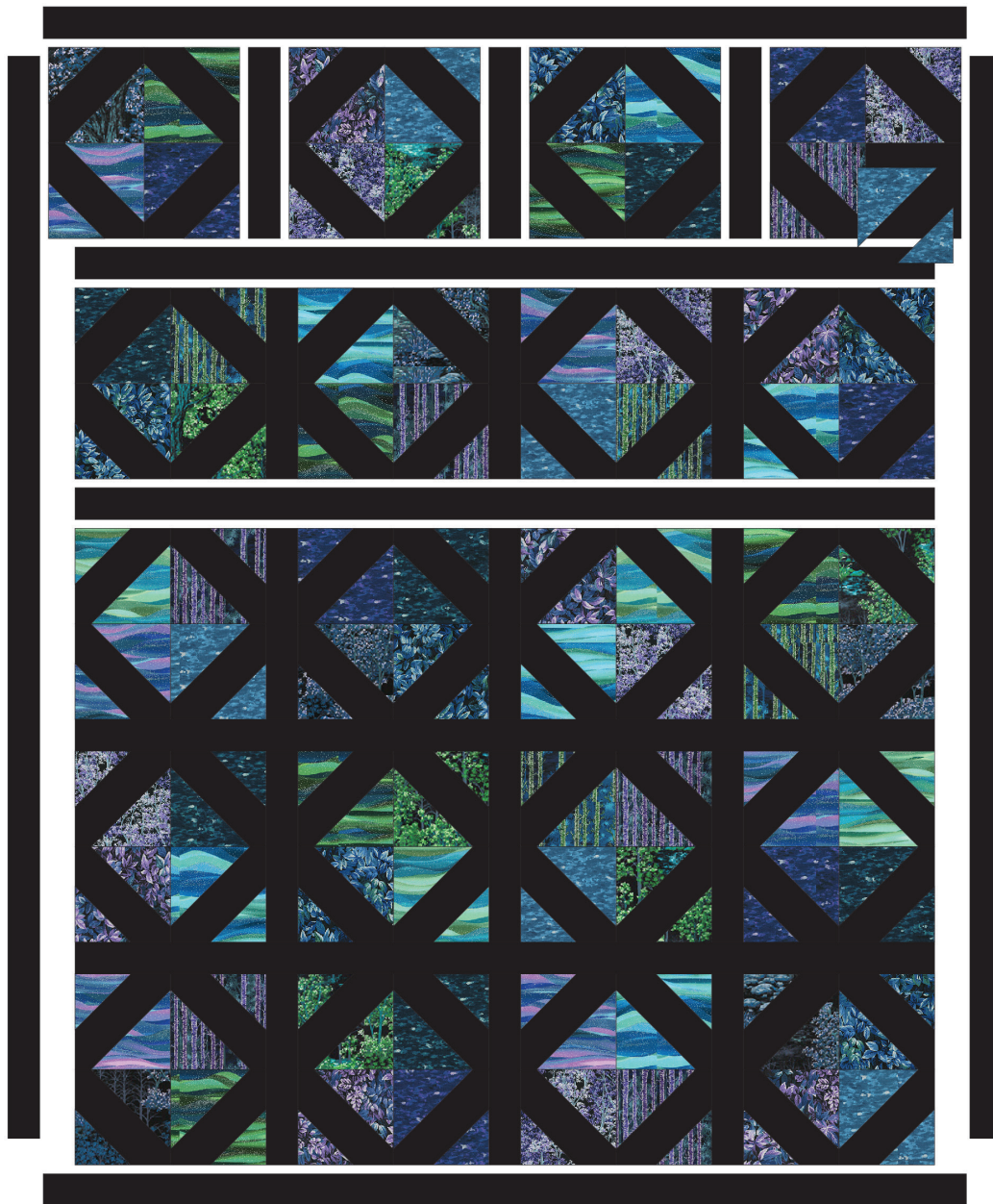
Step 2: Repeat Step 1 with all remaining Fabric A squares, to make a total of eighty 6-1/2" square units.



Step 3: Gather four completed Step 2 units and arrange in a two by two layout, as shown. Sew together to form rows, pressing the seams in opposite directions. Sew the rows together and press. The resulting block will measure 12-1/2" square.



Assemble the Quilt



Step 4: Arrange the Blocks together as indicated in the Quilt Assembly Diagram. Sew each row together, using sashing strips between each block. Press seams toward the sashing. Repeat to make five block rows.

Step 5: Sew the sashing and block rows together, pinning and nesting the seams. Press seams open or to the sashing.

Step 6: Sew the side outer borders to the sides of the quilt center. Press toward the borders. Sew the top and bottom outer borders to the quilt center. Press toward the borders.

Your quilt top is complete! Baste, quilt, bind and enjoy!

This pattern may be used for personal purposes only and may not be reproduced in any form without the express permission from Robert Kaufman Fabrics. This pattern is not for resale. All patterns, unless otherwise attributed, are © Robert Kaufman Co., Inc. 2005-2020. All rights reserved.