

OCEANIC SANCTUARY

Designed by Robert Kaufman Fabrics
www.robertkaufman.com

Featuring Wilderness Expressions



Finished quilt measures: 43" x 47-1/2"

Pattern Level: Confident Beginner


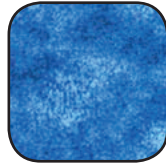

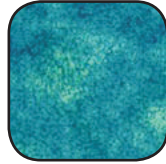
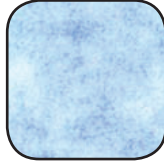

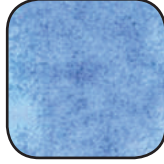
*"I have basic block construction down
and would like to learn a new trick!"*

ROBERT KAUFMAN
F A B R I C S

For questions about this pattern, please email Patterns@RobertKaufman.com.

Fabric and Supplies Needed

Fabric amounts based on yardage that is 44" wide.

Color	Fabric	Name/SKU	Yardage	Color	Fabric	Name/SKU	Yardage
	A	AQM-15950-59 OCEAN	2/3 yard (one panel)		E	AQM-15949-59 OCEAN *includes binding	3/4 yard
	B	AQM-15949-13 TAN	2/3 yard		F	AQM-15949-60 PACIFIC	1/4 yard
	C	AQM-15949-245 MIST	1/4 yard		G	AQM-15951-59 OCEAN	5/8 yard
	D	AQM-15949-61 PERIWINKLE	1/4 yard	<div>You will also need: 3 yards for backing</div>			
Copyright 2016, Robert Kaufman For individual use only - Not for resale							

Notes Before You Begin

- Read through all of the instructions before beginning.
- All of the seam allowances are 1/4" unless otherwise noted.
- Press seam allowances open unless otherwise noted.
- Width of fabric (WOF) is equal to at least 44" wide.
- Right sides together has been abbreviated to RST.
- Remember to measure twice and cut once!

Cutting Instructions

Fabric A

Fussy cut six smaller blocks to 9-1/2" x 11"

Fussy cut one bigger block to 20-1/2" x 11"

Fabric B

Cut ten strips 1-1/4" x WOF

sub cut three strips into twelve 1-1/4" x 9-1/2" strips

sub cut five strips into fourteen 1-1/4" x 12-1/2" strips

sub cut one strip into two 1-1/4" x 20-1/2" strips
sub cut one strip into two 1-1/4" x 6-1/4" strips and
two 1-1/4" x 13-1/4" strips

Cut four strips 1-1/2" x WOF

sub cut two strips into two 1-1/2" x 38" strips
sub cut two strips into two 1-1/2" x 41" strips

Fabric C

Cut one strip 3-1/2" x WOF

Cut one strip 2" x WOF

sub cut into two 2" x 4" strips

Fabric D

Cut one strip 3-1/2" x WOF

Cut one strip 2" x WOF

sub cut into two 2" x 3-1/2" strips

Fabric E

Cut one strip 3-1/2" x WOF

Cut one strip 2" x WOF

sub cut into two 2" x 3-1/2" strips

Cut five strips 2-1/4" x WOF - set aside for binding

Fabric F

Cut one strip 3-1/2" x WOF

Cut one strip 2" x WOF

sub cut into one 2" x 6" strips

Fabric G

Cut four strips 3" x WOF

Trim two strips down to 3" x 43"

Trim two strips down to 3" x 42-1/2"

Cut one strip 5-1/2" x WOF

sub cut into two 5-1/2" x 13-1/4" strips

Making the Strip Sets

Step 1 Sew together the 3-1/2" x WOF strips of Fabrics C, D, E and F in the order shown in fig. 1. Press all seams in the same direction.

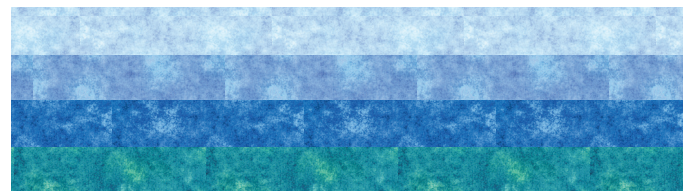


fig. 1

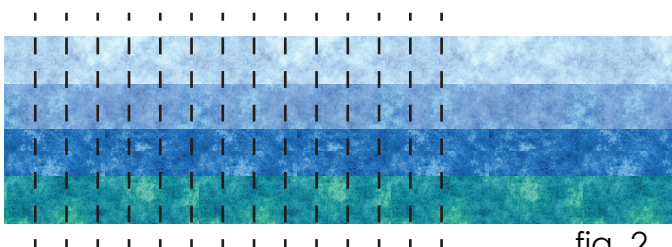


fig. 2

Step 2 Cut the strip set from Step 1 into fourteen 2" x 12-1/2" (see fig. 2). Label as SPU, set aside. There will be some extra left over.

Step 3 Take three SPU's from Step 2 and sew them together end to end to create a border strip (BSPU). See diagram to the right. Repeat to make two. Press all seams in same direction.



Adding Borders to the Blocks

Step 4 Sew a 1-1/4" x 9-1/2" Fabric B strip to the top and bottom of each small panel block. Press towards Fabric B.

Step 5 Sew a 1-1/4" x 20-1/2" Fabric B strip to the top and bottom of the large panel block. Press towards Fabric B.

Step 6 Sew a 1-1/4" x 12-1/2" Fabric B strip to the left and right sides of all panel blocks. Press towards Fabric B.

Step 7 Sew a 1-1/4" x 13-1/4" Fabric B strip to the left side of one 5-1/2" x 13-1/4" Fabric G piece, and a 1-1/4" x 13-1/4" Fabric B strip to the right side of the other 5-1/2" x 13-1/4" Fabric G piece.

Step 8 Sew a 1-1/4" x 6-1/4" Fabric B strip to the top of each of the blocks made in Step 7. Press towards Fabric B.

Step 9 Sew a SPU from Step 2 to the right side of three of your small panel blocks, making two that look like fig.3 (but with two different panel images - label as A1) and one that looks like fig. 4 (label as A2). Repeat with the remaining three panel blocks making two that look like fig. 5 (but with two different panel images label as A3) and one that looks like fig. 6 (label as A4). Press all seams toward Fabric B.



fig. 3 - A1

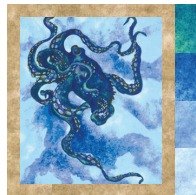


fig. 4 - A2

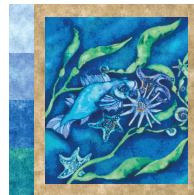


fig. 5 - A3



fig. 6 - A4

Step 10 Add a SPU to either side of the large panel block. (Fig. 7) Press seams towards fabric B.



fig. 7

Step 11 Sew a Fabric E 2" x 3-1/2" strip to either side of a 2" x 6" Fabric F strip. Press seams towards center.

Step 12 Sew a Fabric D 2" x 3-1/2" strip, followed by a Fabric C 2" x 4" to either side of the fabric strip from Step 10. Press seams towards center. Resulting strip should look like Fig. 8.



fig. 8

Step 13 Sew the strip created in Step 12 to the bottom of the large panel block. Press toward Fabric B

Assemble the Quilt Top



Step 14 Sew an A1 block to either side of an A2 block. Press seams towards Fabric B. Label as B1.

Step 15 Sew an A3 block to either side of an A4 block. Press seams towards Fabric B. Label as B2.

Step 16 Sew a BSPU strip to the top of B1. Press toward B1.

Step 17 Sew a BSPU strip to the Bottom of B2. Press toward B2.

Step 18 Sew B1 and B2 together. Press toward B2.

Step 19 Sew the blocks from Step 8 to either side of the large panel block. See fig. 9

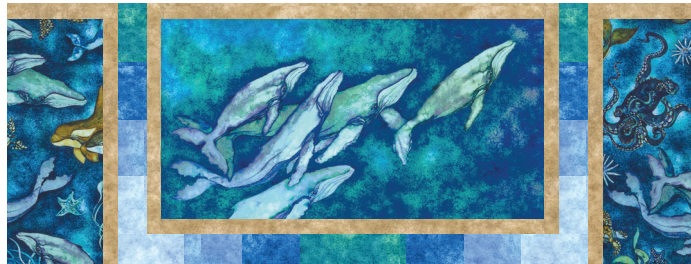


fig. 9

Step 20 Sew the row from Step 19 to the bottom of B2. Press toward B2.

Adding the Borders

Step 21 Sew the two 1-1/4" x 41" Fabric B strips to the left and right side of the quilt top.

Step 22 Sew the two 1-1/4" x 38" Fabric B strips to the top and bottom of the quilt top. Press towards the strips.

Step 23 Sew the two 3" x 42-1/2" Fabric G strips to the left and right side of the quilt top.

Step 24 Sew the two 3" x 43" Fabric G strips to the top and bottom of the quilt top.

Finishing Quilt

Step 25 Cut backing fabric into two pieces 1-3/4yds x WOF. Sew together along salvage edge, press seam, and trim as desired.

Step 26 Layer your backing face down, then batting, then your quilt top face up.

Step 27 Baste through all layers, then quilt as desired. Bind using Fabric E.