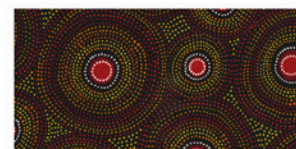


Native Arts

Quilt by:
Margrit Hall



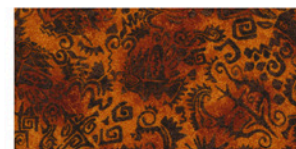
ETJ-6354-205 MULTI



ETJ-6357-3 RED



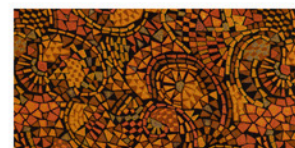
EKJ-6353-169 EARTH



EYJ-6364-206 SUNSET



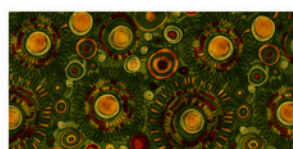
EKJ-6355-16 BROWN



ETJ-6369-169 EARTH



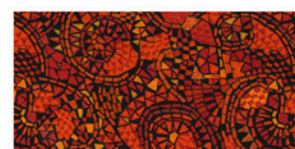
*KONA COTTON-BLACK



ETJ-6358-48 JUNGLE



EZJ-6362-169 EARTH

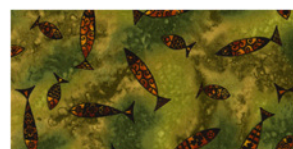


ETJ-6369-3 RED

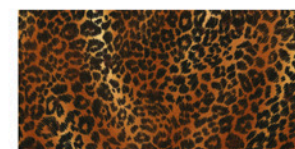
FOR MORE QUILT PATTERNS VISIT OUR WEBSITE

ROBERT KAUFMAN
F A B R I C S

www.robertkaufman.com



EUJ-6359-48 JUNGLE



EKJ-6356-176 BRONZE

SAFARI QUILT

DESIGNED BY: MARGRIT HALL

Finished Quilt Size 47" x 62"

Finished Block 7 1/2"




Template C
Full Size
Includes Seam

Template B
Full Size
Includes Seam
Allowance

All strips are to be cut on crosswise grain of the fabric (width of the fabric).
All strips are based on 42" long strips. Carefully trim off all selvages.

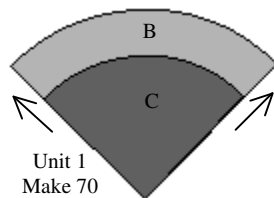
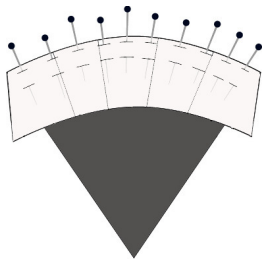
PLEASE READ THE PATTERN CAREFULLY BEFORE YOU BEGIN.

FABRIC REQUIREMENTS AND CUTTING DIRECTIONS

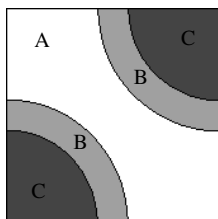
| Fabric Color | Fabric Amount | Cutting Directions |
|--|-------------------------------|---|
| EYJ6364-206 Sunset ETJ6357-3 Red ETJ6358-48 Jungle EKJ6356-176 Bronze EKJ6355-16 Brown EKJ6353-169 Earth EUJ6359-48 Jungle | 3/8 yard each of 7 fabrics | Cut 1 strip 8" wide from each color. Cut 5 of Template A from each strip placing each cut as close to the previous cut as possible  |
| ETJ6369-3 Red | 1-1/2 yards | Cut 14 strips 3-1/4" wide. Cut 70 of Template B from the strips.  |
| Kona Cotton Black | 3/4 yard | Cut 6 strips 3-3/4" wide. Cut 70 of Template C from the strips.  |
| ETJ6354-205 Multi | 1 yard | Cut 6 strips 5-1/4" wide for the border. |
| ETJ6369-169 Earth | 1/2 yard | Cut 6 strips 2-1/4" wide for the binding. |
| EZJ6362-169 Earth | 3 yards | Back |

Block Construction

1. Fold a Template B and Template C in half to find the centers and finger press to make a center crease. Place a Template B and C right sides together with B (concave curve) on the top and C (convex curve) on the bottom. Match the centers and pin. Then match and pin the outer edges of the curve. Continue to pin across the seam clipping the concave edge of B as necessary to ease across the convex curve of C. Sew edge carefully. Open and press toward arrow.



2. Creasing to find the centers and pinning as described in step 1, sew a Unit 1 to both sides of a Template A. Make sure A is on top of Unit 1. Make 35 blocks (7 of each Template A color). Open and press toward arrows.



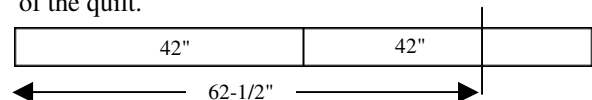
Completed Block

Quilt Assembly

1. Using the photo as a guide layout the quilt into 7 rows of 5 blocks each. Sew block into rows and sew the rows together to make the body of the quilt.

Borders (If your measurements are different cut to your measurements)

1. Cut 2 the 5-1/4" border strips down to measure 38". Sew to the top and bottom of the quilt.
2. Sew 2 of the 5-1/4" border strips together end to end. Make 2.
3. Cut each long strip down to measure 62-1/2". Sew to the sides of the quilt.



Template A
Includes Seam
Allowance
Increase 200 %

