

MOSAIC GARDEN

Designed by Ariga Mahmoudlou for RK Featuring
www.robertkaufman.com

Moonlight Garden STUDIO RK



Finished quilt measures: 58" x 70"

Quilt shown in "CHARCOAL" colorstory.

For alternate "INDIGO" and "MULTI" colorstories see pages 6-9.


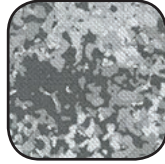


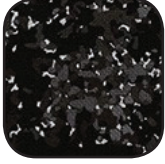




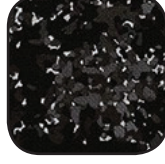
Difficulty Rating: **Intermediate**

ROBERTKAUFMAN
F A B R I C S

For questions about this pattern, please email Patterns@RobertKaufman.com.

Fabric and Supplies Needed

Fabric amounts based on yardage that is 42" wide.

Color	Fabric	Name/SKU	Yardage	Color	Fabric	Name/SKU	Yardage
	A	SRKM-19005-15 IVORY	3/4 yard		F	SRKM-19005-12 GREY	1/4 yard
	B	SRKM-19004-184 CHARCOAL	1/2 yard		G	SRKM-19004-186 SILVER	1-1/2 yard
	C	SRKM-19005-2 BLACK	7/8 yard		H	SRKM-19002-2 BLACK	1/3 yard
	D	SRKM-19005-16 BROWN	1/4 yard		I	SRKM-19000-184 CHARCOAL	3/4 yard
	E	SRKM-19002-12 GREY	7/8 yard		Binding*	SRKM-19005-2 BLACK <i>*Also used for Fabric C</i>	1/2 yard
<p>Copyright 2019, Robert Kaufman For individual use only - Not for resale</p>				<p>You will also need: 3-2/3 yards for backing</p>			

Notes Before You Begin

- Read through all of the instructions before beginning.
- All of the seam allowances are 1/4" unless otherwise noted.
- Press seam allowances open unless otherwise noted.
- Width of fabric (WOF) is equal to at least 42" wide.
- Right sides together has been abbreviated to RST.
- Remember to measure twice and cut once!

From Fabric A, cut:

eight 3" x WOF strips. Subcut:
one hundred 3" squares for the HSTs

From Fabric B, cut:

five 3" x WOF strips. Subcut:
sixty 3" squares for the HSTs

From Fabric C, cut:

five 3" x WOF strips. Subcut:
sixty 3" squares for the HSTs
six 2" x WOF strips. Sew together, end-to-end, then trim:
two 2" x 51-1/2" top/bottom inner borders
two 2" x 60-1/2" side inner borders

From Fabric D, cut:

three 2-1/2" x WOF strips. Subcut:
forty 2-1/2" squares

From Fabric E, cut:

six 3" x WOF strips. Subcut:
eighty 3" squares for the HSTs
three 2-1/2" x WOF strips. Subcut:
forty 2-1/2" squares

From Fabric F, cut:

two 3" x WOF strips. Subcut:
twenty 3" squares for the HSTs

From Fabric G, cut:

nine 3" x WOF strips. Subcut:
one hundred twenty 3" squares for the HSTs
ten 2-1/2" x WOF strips. Subcut:
one hundred sixty 2-1/2" squares

From Fabric H, cut:

three 3" x WOF strips. Subcut:
forty 3" squares for the HSTs

From Fabric I, cut:

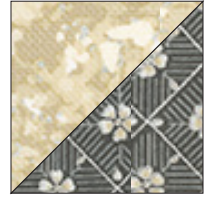
six 4" x WOF strips. Sew together, end-to-end, then trim:
two 4" x 58-1/2" top/bottom outer borders
two 4" x 63-1/2" side outer borders

From the Binding Fabric, cut:

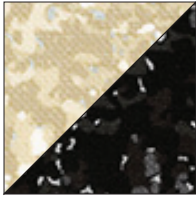
seven 2-1/2" x WOF strips

Assemble the Half-Square Triangles (HSTs)

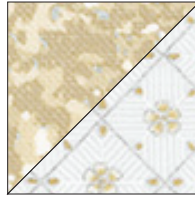
Step 1: Pair a 3" Fabric A square with a 3" Fabric B square, RST. Mark a diagonal line on the wrong side of one square. Sew 1/4" away from both sides of the marked line. Cut on the marked line, creating two half-square triangles (HSTs). Press toward the darker fabric. Trim to 2-1/2" square. Repeat to make forty A/B HSTs.



Step 2: Repeat Step 1 to make:



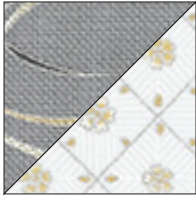
eighty A/C HSTs



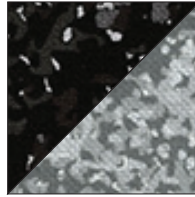
eighty A/G HSTs



eighty B/E HSTs



eighty E/G HSTs

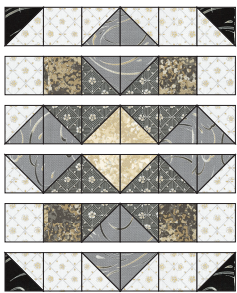


forty C/F HSTs



eighty G/H HSTs

Assemble the A Blocks



Step 3: Gather:

- four G/H HSTs
- eight 2-1/2" Fabric G squares
- eight E/G HSTs
- four 2-1/2" Fabric D squares
- eight B/E HSTs
- four A/B HSTs

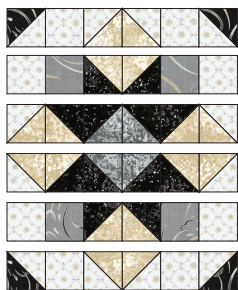
Arrange the units into six rows of six. Note the fabric placement and block orientation in the Block Assembly Diagram.

Step 4: Sew the units together to form the rows. Press the seams to the left in odd numbered rows and to the right in even numbered rows.

Step 5: Sew the rows together, nesting the seams and pressing the seams to one side to form the block.

Step 6: Repeat Steps 3-5 to make a total of ten A Blocks.

Assemble the B Blocks



Step 7: Gather:
four G/H HSTs
eight 2-1/2" Fabric G squares
eight A/G HSTs
four 2-1/2" Fabric E squares
eight C/A HSTs
four C/F HSTs

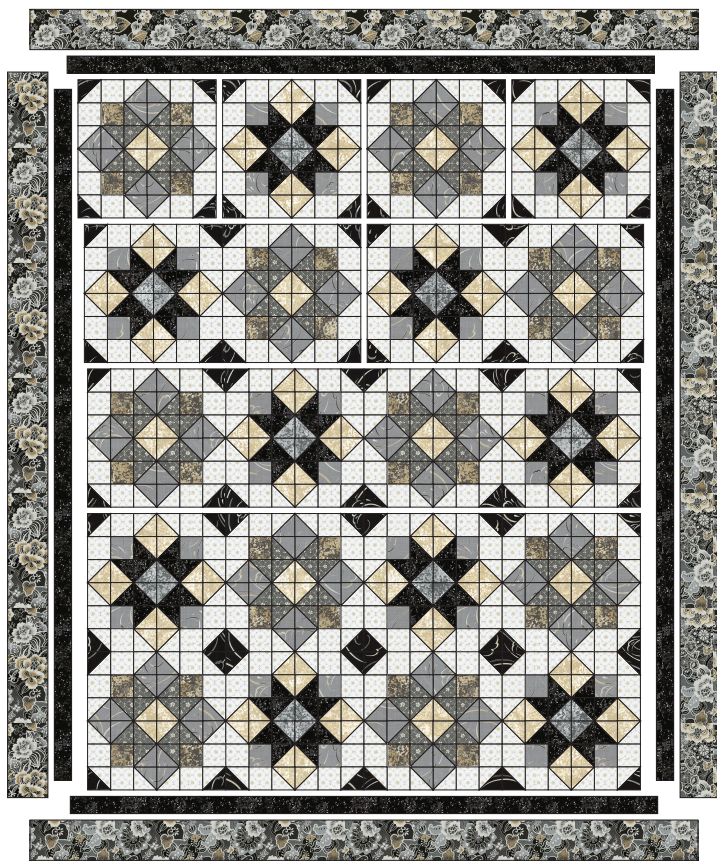
Arrange the units into six rows of six. Note the fabric placement and block orientation in the Block Assembly Diagram.

Step 8: Sew the units together to form the rows. Press the seams to the right in odd numbered rows and to the left in even numbered rows.

Step 9: Sew the rows together, nesting the seams and pressing the seams to one side to form the block.

Step 10: Repeat Steps 7-9 to make a total of ten B Blocks.

Assemble the Quilt



Step 11: Arrange the blocks into five rows of four blocks. Note the fabric placement and block orientation in the Quilt Assembly Diagram.

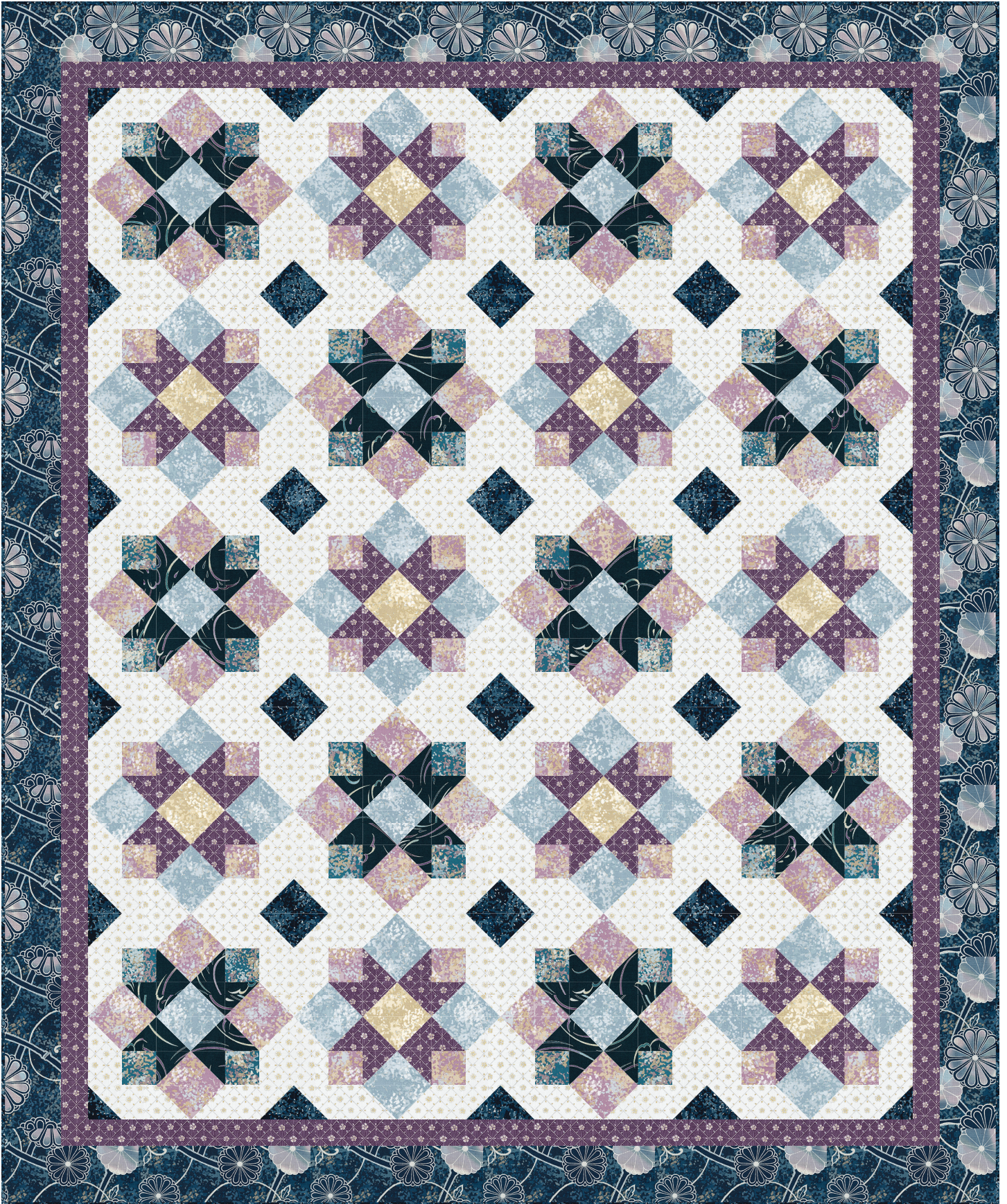
Step 12: Sew the blocks together to form rows. Press the rows to the left in the odd numbered rows and to the right in the even numbered rows.

Step 13: Sew the rows together to form the quilt center. Press the row seams open.

Step 14: Sew the side inner borders to the sides of the quilt center. Press toward the borders. Sew the top and bottom inner borders to the quilt center. Press toward the borders.

Step 15: Sew the side outer borders to the sides of the quilt center. Press toward the borders. Sew the top and bottom outer borders to the quilt center. Press toward the borders.






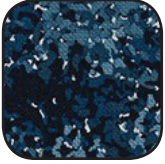



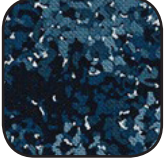
Your quilt top is complete! Baste, quilt, bind and enjoy!



MOSAIC GARDEN - Indigo Colorstory

Fabric and Supplies Needed

Fabric amounts based on yardage that is 42" wide.

Color	Fabric	Name/SKU	Yardage	Color	Fabric	Name/SKU	Yardage
	A	SRKM-19005-63 SKY	3/4 yard		F	SRKM-19005-15 IVORY	1/4 yard
	B	SRKM-19002-62 INDIGO	1/2 yard		G	SRKM-19004-15 IVORY	1-1/2 yard
	C	SRKM-19004-24 PLUM	7/8 yard		H	SRKM-19005-62 INDIGO	1/3 yard
	D	SRKM-19005-213 TEAL	1/4 yard		I	SRKM-19001-62 INDIGO	3/4 yard
	E	SRKM-19005-24 PLUM	7/8 yard		Binding*	SRKM-19005-62 INDIGO <i>*Also used for Fabric C</i>	1/2 yard
<p>Copyright 2019, Robert Kaufman For individual use only - Not for resale</p>				<p>You will also need: 3-2/3 yards for backing</p>			



MOSAIC GARDEN - Multi Colorstory

Fabric and Supplies Needed

Fabric amounts based on yardage that is 42" wide.

Color	Fabric	Name/SKU	Yardage	Color	Fabric	Name/SKU	Yardage
	A	SRKM-19005-205 MULTI	3/4 yard		F	SRKM-19005-15 IVORY	1/4 yard
	B	SRKM-19004-205 MULTI	1/2 yard		G	SRKM-19004-186 SILVER	1-1/2 yard
	C	SRKM-19005-4 BLUE	7/8 yard		H	SRKM-19005-278 ATMOSPHERE	1/3 yard
	D	SRKM-19000-238 GARDEN	1/4 yard		I	SRKM-19001-205 MULTI	3/4 yard
	E	SRKM-19002-238 GARDEN	7/8 yard		Binding*	SRKM-19004-205 MULTI <i>*Also used for Fabric B</i>	1/2 yard
<p>Copyright 2019, Robert Kaufman For individual use only - Not for resale</p>				<p>You will also need: 3-2/3 yards for backing</p>			