

# ONCE UPON A TIME

Designed by Robert Kaufman  
Fabrics [www.robertkaufman.com](http://www.robertkaufman.com)

Featuring **Moon Spell**



Finished quilt measures: 49" x 62"

For questions about this pattern, please email [Patterns@RobertKaufman.com](mailto:Patterns@RobertKaufman.com).

Difficulty Rating: Beginner

**ROBERTKAUFMAN**  
F A B R I C S

## Fabric and Supplies Needed

Fabric amounts based on yardage that is 42" wide.

Color	Fabric	Name/SKU	Yardage	Color	Fabric	Name/SKU	Yardage
	A	APYD-23691-282 SPOOKY	2/3 yard (one complete panel)		E	APYD-23693-460 MIDNIGHT PURPLE	1/4 yard
	B	APYD-23693-80 EVENING	1/3 yard		F	K001-1019 BLACK	5/8 yard
	C	APYD-23690-438 NIGHT	2/3 yard (one complete panel)		G	APYD-23692-169 EARTH	1-5/8 yards
	D	APYD-23694-148 PUMPKINS	1/4 yard		Binding*	K001-1019 BLACK	1/2 yard
				*Also used for Fabric F			
Copyright 2026, Robert Kaufman For individual use only - Not for resale				You will also need: 3-1/4 yards for backing			

### Notes Before You Begin

- Read through all of the instructions before beginning.
- All of the seam allowances are 1/4" unless otherwise noted.
- Press seam allowances open unless otherwise noted.
- Width of fabric (WOF) is equal to at least 42" wide.
- Length of fabric is abbreviated to LOF.
- Right sides together has been abbreviated to RST.
- Remember to measure twice and cut once!

## Cutting Instructions

### **From Fabric A**, fussy cut:

one 22-1/2" x 35-1/2" rectangle centered on the motif

### **From Fabric B**, cut:

four 1-1/2" x WOF strips. Subcut:

two 1-1/2" x 35-1/2" rectangles

two 1-1/2" x 24-1/2" rectangles

three 1" x WOF strips. Subcut:

four 1" x 11-1/2" rectangles

four 1" x 10-1/2" rectangles

### **From Fabric C**, fussy cut:

six 10-1/2" squares centered on the motifs

### **From each of Fabrics D and E**, cut:

three 1" x WOF strips of each fabric. Subcut:

four 1" x 11-1/2" rectangles of each fabric

four 1" x 10-1/2" rectangles of each fabric

### **From Fabric F**, cut:

seven 2-1/2" x WOF strips. Subcut:

two 2-1/2" x 41-1/2" top/ bottom inner borders

one 2-1/2" x 24-1/2" horizontal sashing strip

three 2-1/2" x 11-1/2" horizontal sashing strips

one 2-1/2" x 11-1/2" vertical sashing strip

Sew the remaining three strips together, then subcut:

two 2-1/2" x 50-1/2" side inner borders

one 2-1/2" x 50-1/2" vertical sashing strip

### **From Fabric G**, cut:

four 4-1/2" x **LOF** strips. Subcut:

two 4-1/2" x 54-1/2" side outer borders

two 4-1/2" x 49-1/2" top/ bottom outer borders

### **From the Binding Fabric**, cut:

six 2-1/2" x WOF strips

## Assemble the Blocks

**Step 1:** Sew the Fabric A rectangle between the two 1-1/2" x 35-1/2" Fabric B rectangles. Press the seams toward the rectangles. Sew a 1-1/2" x 24-1/2" Fabric B rectangle to the top and bottom edges of the unit. Press the seams toward the rectangles to complete the large block.

**Note:** See the Quilt Assembly Diagram for exact fabric pairings for the small blocks below if you would like your quilt to match the cover quilt.



**Step 2:** Sew a Fabric C square between two 1" x 10-1/2" Fabric D rectangles. Press the seams toward the rectangles. Sew a 1" x 11-1/2" Fabric D rectangles to the top and bottom edges of the unit. Press the seams toward the rectangles.

Repeat to make two small blocks with Fabric D rectangles.



**Step 3:** Sew a Fabric C square between two 1" x 10-1/2" Fabric B rectangles. Press the seams toward the rectangles. Sew a 1" x 11-1/2" Fabric B rectangles to the top and bottom edges of the unit. Press the seams toward the rectangles.

Repeat to make two small blocks with Fabric B rectangles.



**Step 4:** Sew a Fabric C square between two 1" x 10-1/2" Fabric E rectangles. Press the seams toward the rectangles. Sew a 1" x 11-1/2" Fabric E rectangles to the top and bottom edges of the unit. Press the seams toward the rectangles.

Repeat to make two small blocks with Fabric E rectangles.



## Assemble the Blocks

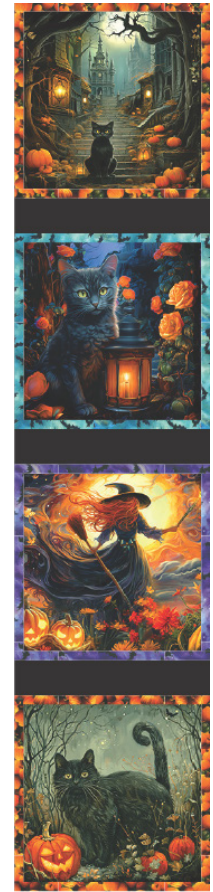
**Step 5:** Sew the 2-1/2"x 11-1/2" vertical sashing strip between two small blocks. Press the seams towards the sashing strip.



**Step 6:** Sew the 2-1/2" x 24-1/2" horizontal sashing strip between the large block and the unit from the previous step as shown. Press the seams towards the sashing strip.



**Step 7:** Sew the four remaining small blocks and three 2-1/2" x 11-1/2" horizontal sashing strips together in a column as shown. Press the seams towards the sashing strips.



**Step 8:** Sew the 2-1/2" x 50-1/2" vertical sashing strip between the Step 6 unit and Step 7 unit as shown. Press the seams toward the sashing strip to complete the quilt center.





**Step 9:** Sew the side inner borders to the sides of the quilt center. Press toward the borders. Sew the top and bottom inner borders to the quilt center. Press toward the borders.

**Step 10:** Sew the side outer borders to the sides of the quilt center. Press toward the borders. Sew the top and bottom outer borders to the quilt center. Press toward the borders.

Your quilt top is complete! Baste, quilt, bind, and enjoy!

This pattern may be used for personal purposes only and may not be reproduced in any form without the express permission from Robert Kaufman Fabrics. This pattern is not for resale. All patterns, unless otherwise attributed, are © Robert Kaufman Co., Inc. 2005-2025. All rights reserved.