

MIRRORED STARS

Designed by Ariga Mahmoudlou for RK Featuring ARTISAN
BATIKS
www.robertkaufman.com

WILDLIFE SANCTUARY

by LENNY



Finished quilt measures: 45" x 57"














Difficulty Rating: **Beginner**

ROBERTKAUFMAN
F A B R I C S

For questions about this pattern, please email Patterns@RobertKaufman.com.

Fabric and Supplies Needed

Fabric amounts based on yardage that is 42" wide.

Color	Fabric	Name/SKU	Yardage	Color	Fabric	Name/SKU	Yardage
	A	AMD-7000-153 SAND	3/4 yard		H	AMD-17778-169 EARTH	1/4 yard
	B	AMD-7000-62 INDIGO	3/4 yard		I	AMD-17780-9 NAVY	7/8 yard
	C	AMD-17776-73 LAKE	1/4 yard		J	AMD-17779-9 NAVY	1/4 yard
	D	AMD-17778-184 CHARCOAL	1/4 yard		K	AMD-17780-47 GRASS	1/4 yard
	E	AMD-17775-169 EARTH	1/4 yard		L	AMD-17780-169 EARTH	1/2 yard
	F	AMD-17776-246 WATER	1/4 yard		Binding*	AMD-7000-62 INDIGO <i>*Also used for Fabric B</i>	1/2 yard
	G	AMD-17779-179 RUST	1/4 yard	<div>You will also need: 3 yards for backing</div>			
Copyright 2018, Robert Kaufman For individual use only - Not for resale							

Notes Before You Begin

- Read through all of the instructions before beginning.
- All of the seam allowances are 1/4" unless otherwise noted.
- Press seam allowances open unless otherwise noted.
- Width of fabric (WOF) is equal to at least 42" wide.
- Right sides together has been abbreviated to RST.
- Remember to measure twice and cut once!

Cutting Instructions

From each of Fabrics A and B, cut:

one 7" x WOF strip. Subcut:
three 7" squares for the large HSTs
three 4" x WOF strips. Subcut:
thirty 4" squares for the small HSTs
one 3-1/2" x WOF strip. Subcut:
six 3-1/2" squares

From each of Fabrics C, D and F-H, cut:

one 7" x WOF strip. Subcut:
one 7" square. Cut the square in half along one diagonal, creating two triangles.
From the remainder of the strip, cut:
four 4" squares for the small HSTs

From each of Fabrics E, J and K, cut:

one 7" x WOF strip. Subcut:
two 7" squares. Cut the squares in half along one diagonal, creating four triangles. Set one triangle aside for another project.
From the remainder of the strip, cut:
six 4" squares for the small HSTs

From Fabric I, cut:

one 7" x WOF strip. Subcut:
two 7" squares. Cut the squares in half along one diagonal, creating four triangles. Set one triangle aside for another project.
From the remainder of the strip, cut:
six 4" squares for the small HSTs
five 4" x WOF strips. Sew together, end-to-end, then trim:
two 4" x 57-1/2" side outer borders
two 4" x 38-1/2" side outer borders

From Fabric L, cut:

one 7" x WOF strip. Subcut:

one 7" square. Cut the square in half along one diagonal, creating two triangles.

From the remainder of the strip, cut:

four 4" squares for the small HSTs

five 1-1/2" x WOF strips. Sew together, end-to-end, then trim:

two 1-1/2" x 50-1/2" side inner borders

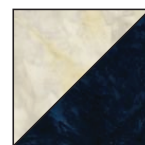
two 1-1/2" x 36-1/2" side inner borders

From the Binding Fabric, cut:

six 2-1/2" x WOF strips

Assemble the Small Half-Square Triangles (HSTs)

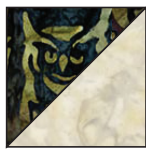
Step 1: Pair a 4" Fabric A square with a 4" Fabric B square, RST. Mark a diagonal line on the wrong side of one square. Sew 1/4" away from both sides of the marked line. Cut on the marked line, creating two half-square triangles (HSTs). Press toward the darker fabric. Trim to 3-1/2" square. Repeat to make twelve A/B HSTs.



Step 2: Repeat Step 1 with the remaining 4" squares to make:



eight C/B HSTs



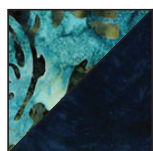
eight D/A HSTs



eight E/B HSTs



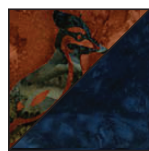
four E/A HSTs



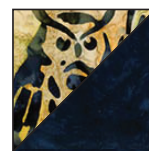
eight F/B HSTs



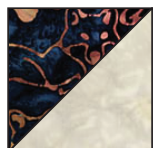
four G/A HSTs



four G/B HSTs



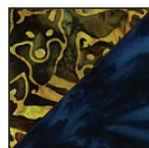
eight H/B HSTs



twelve I/A HSTs



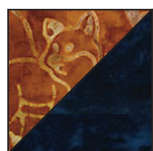
twelve J/A HSTs



four K/B HSTs



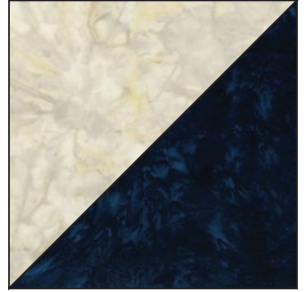
eight K/A HSTs



eight L/B HSTs

Assemble the Large Half-Square Triangles (HSTs)

Step 3: Pair a 7" Fabric A square with a 7" Fabric B square, RST. Mark a diagonal line on the wrong side of one square. Sew 1/4" away from both sides of the marked line. Cut on the marked line, creating two half-square triangles (HSTs). Press toward the darker fabric. Trim to 6-1/2" square. Repeat to make six large A/B HSTs.



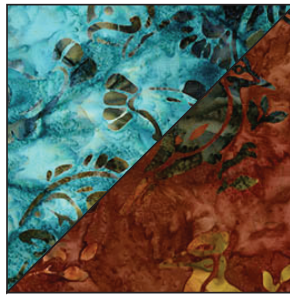
Step 4: Sew a Fabric C triangle to a Fabric D triangle, along the longest edge. Take care not to stretch the bias edges of the triangle. Press. Trim to 6-1/2" square, if needed.



Step 5: Repeat Step 4 with the remaining triangles to make one large HST of each of the following fabric combinations:



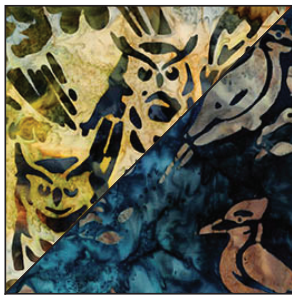
J/E HST



F/G HST



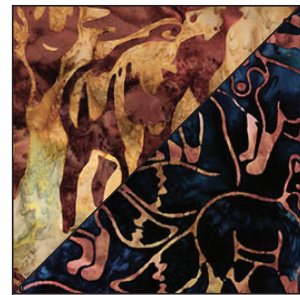
J/L HST



H/J HST



E/K HST



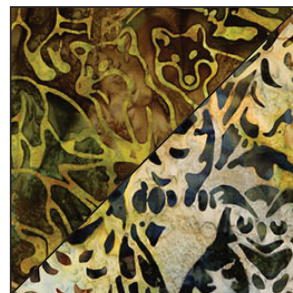
E/I HST



K/G HST



C/J HST



K/H HST



E/D HST



I/L HST

Assemble the Quilt



Step 6: Arrange the large and small HSTs into rows and sections, as shown. Note where sections of the row are made by sewing small HSTs together. Note the fabric placement and block orientation in the Quilt Assembly Diagram.

Step 7: Sew the blocks together to form rows. Press the seams toward the large HSTs.

Step 8: Sew the rows together to form the quilt center. Press the row seams open.

Step 9: Sew the top and bottom inner borders to the quilt center. Press toward the borders. Sew the side inner borders to the sides of the quilt center. Press toward the borders.

Step 10: Sew the top and bottom outer borders to the quilt center. Press toward the borders. Sew the side outer borders to the sides of the quilt center. Press toward the borders.

Your quilt top is complete. Baste, quilt, bind and enjoy!

This pattern may be used for personal purposes only and may not be reproduced in any form without the express permission from Robert Kaufman Fabrics. This pattern is not for resale. All patterns, unless otherwise attributed, are © Robert Kaufman Co., Inc. 2005-2018. All rights reserved.