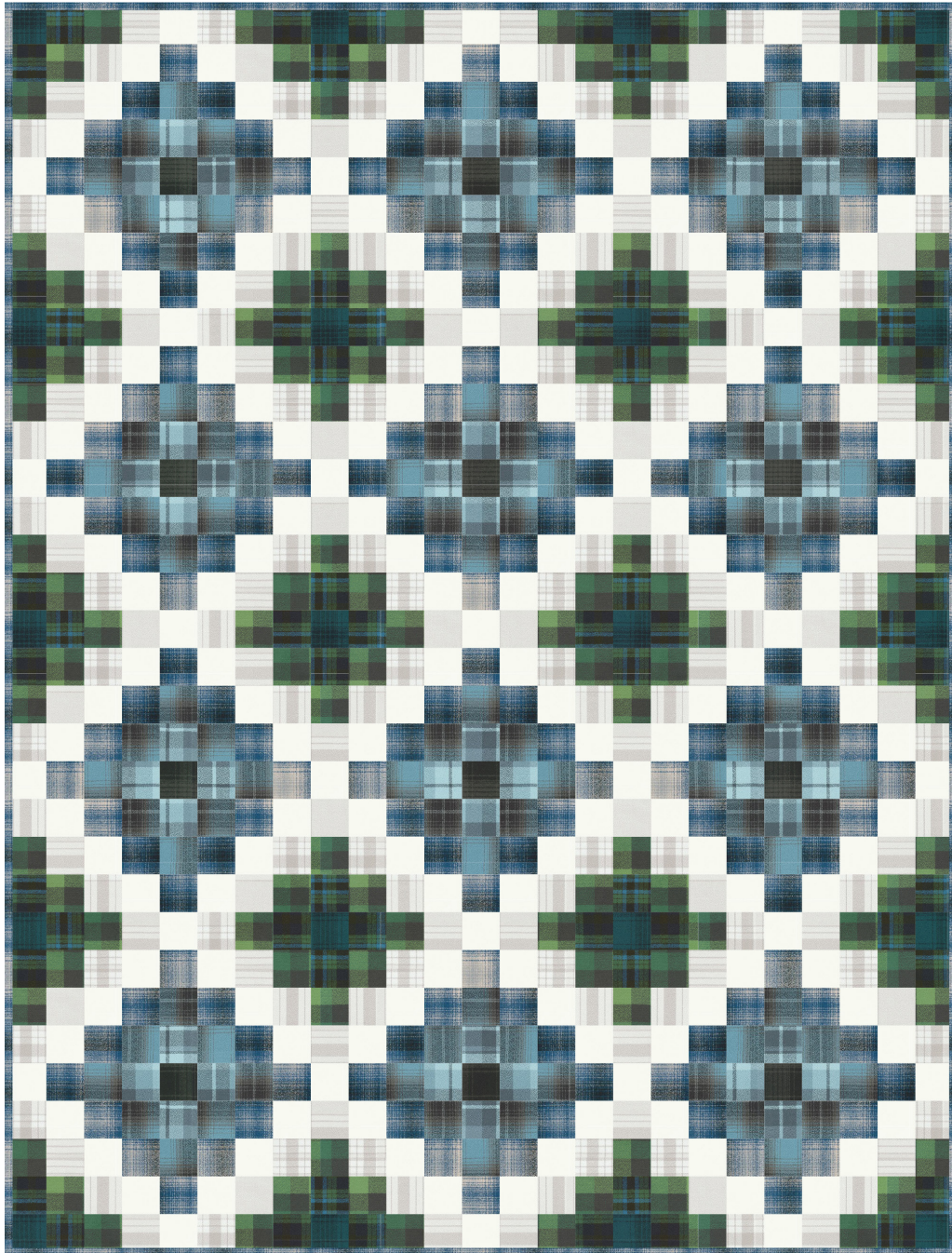


BUDDING BLOSSOMS

Designed by Robert Kaufman Fabrics
www.robertkaufman.com

Featuring

**MAMMOTH
FLANNEL** STUDIO
RK



Finished quilt measures: 50" x 66"







Difficulty Rating: **Beginner**

ROBERTKAUFMAN
F A B R I C S

For questions about this pattern, please email Patterns@RobertKaufman.com.

Fabric and Supplies Needed

Fabric amounts based on yardage that is 42" wide.

| Color | Fabric | Name/SKU | Yardage | Color | Fabric | Name/SKU | Yardage |
|---|--------|-------------------------------|-------------|--|----------|--|-------------|
|  | A | SRKF-23226-304 SHADOW | 1/8 yard |  | F | SRKF-19669-284 BONE | 1-1/8 yards |
|  | B | SRKF-19667-279 RAIN | 1/3 yard |  | G | SRKF-23224-34 SAGE | 3/4 yard |
|  | C | SRKF-19665-316 COASTAL FOG | 2/3 yard |  | H | SRKF-23223-59 OCEAN | 1/2 yard |
|  | D | SRKF-15595-4 BLUE | 1 yard |  | I | SRKF-23226-60 PACIFIC | 1/4 yard |
|  | E | F019-1339 SNOW | 1-1/8 yards |  | Binding* | SRKF-15595-4 BLUE <small>*Also used for Fabric D</small> | 1/2 yard |

Copyright 2026, Robert Kaufman
For individual use only - Not for resale

You will also need:
3-1/4 yards for backing

Notes Before You Begin

- Read through all of the instructions before beginning.
- All of the seam allowances are 1/4" unless otherwise noted.
- Press seam allowances open unless otherwise noted.
- Width of fabric (WOF) is equal to at least 42" wide.
- Right sides together has been abbreviated to RST.
- Remember to measure twice and cut once!

Cutting Instructions

From Fabric A, cut:
one 2-1/2" x WOF strip.

From Fabric B, cut:
four 2-1/2" x WOF strips.

From Fabric C, cut:
eight 2-1/2" x WOF strips.

From Fabric D, cut:
twelve 2-1/2" x WOF strips.

From Fabric E, cut:
fifteen 2-1/2" x WOF strips.

From Fabric F, cut:
fourteen 2-1/2" x WOF strips.

From Fabric G, cut:
ten 2-1/2" x WOF strips.

From Fabric H, cut:
six 2-1/2" x WOF strips.

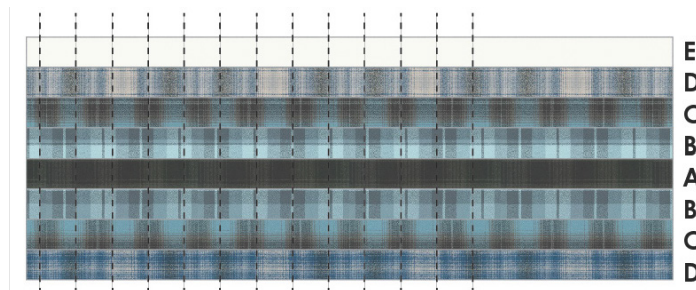
From Fabric I, cut:
two 2-1/2" x WOF strips.

From the Binding Fabric, cut:
seven 2-1/2" x WOF strips.

Assemble the Strip Sets

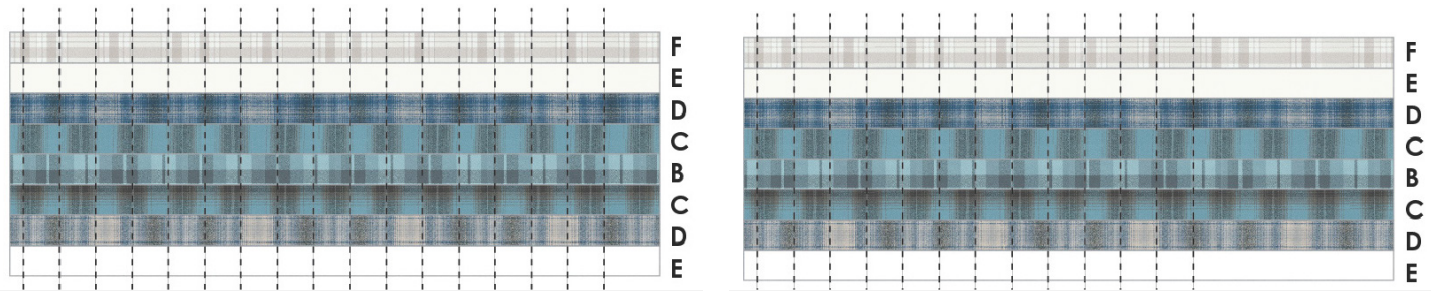
Step 1: Select one A strip, two B strips, two C strips, two D strips, and one E strip. Sew the strips together lengthwise in the order shown. Press the seams towards the A strip.

Cut a total of twelve 2-1/2" Strip A segments.



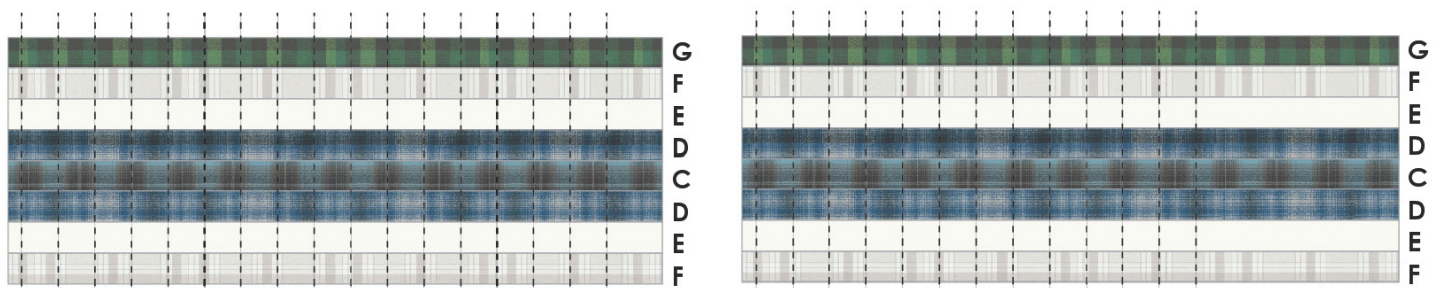
Step 2: Select one B strip, two C strips, two D strips, two E strips, and one F strip. Sew the strips together lengthwise in the order shown. Press the seams away from the B strip. Make two B strip sets.

Cut a total of twenty-four 2-1/2" Strip B segments.



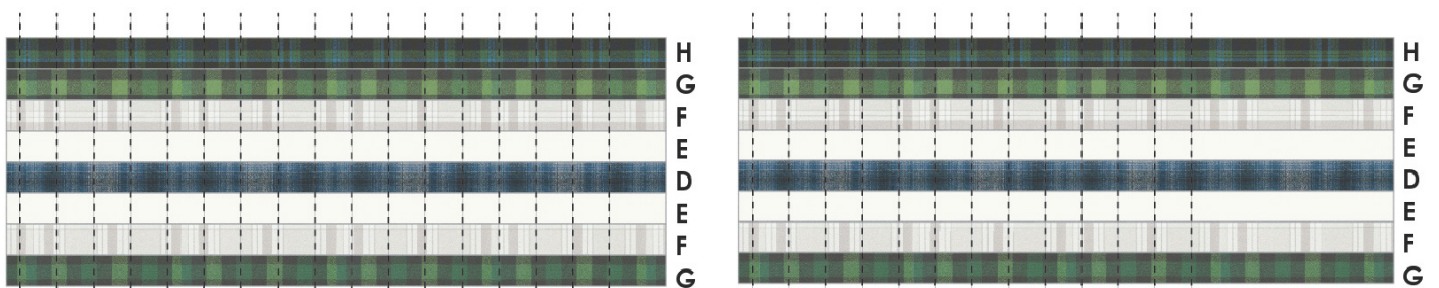
Step 3: Select one C strip, two D strips, two E strips, two F strips, and one G strip. Sew the strips together lengthwise in the order shown. Press the seams towards the C strip. Make two C strip sets.

Cut a total of twenty-four 2-1/2" Strip C segments.



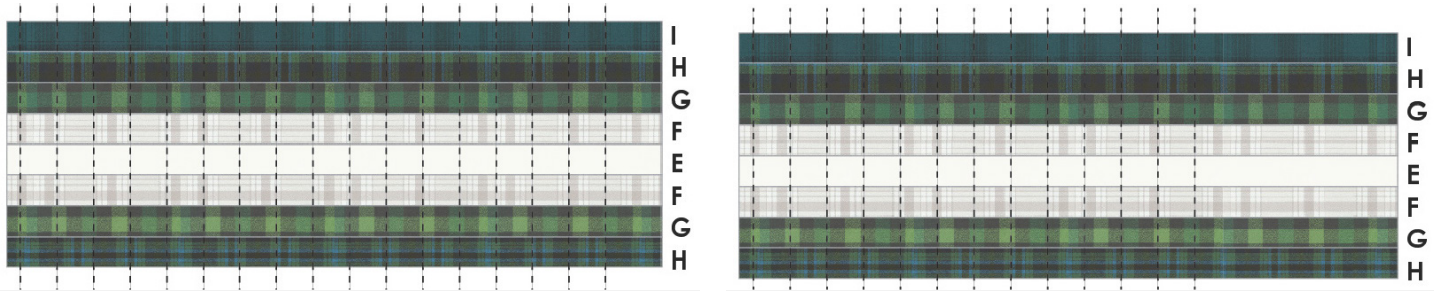
Step 4: Select one C strip, two D strips, two E strips, two F strips, and one G strip. Sew the strips together lengthwise in the order shown. Press the seams away from the D strip. Make two D strip sets.

Cut a total of twenty-four 2-1/2" Strip D segments.



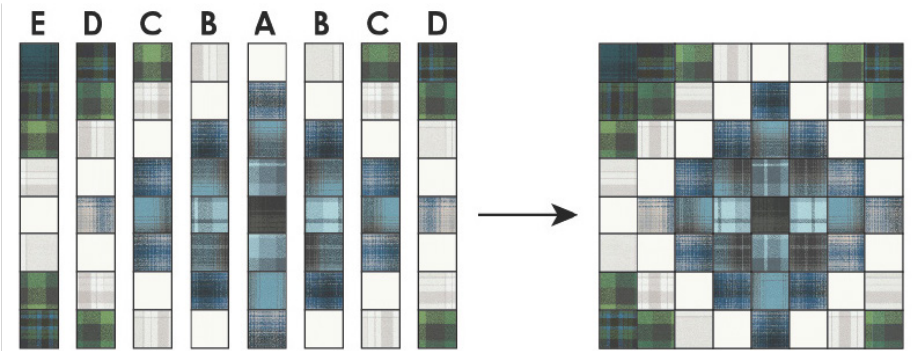
Step 5: Select one E strip, two F strips, two G strips, two H strips, and one I strip. Sew the strips together lengthwise in the order shown. Press the seams towards the E strip. Make two E strip sets.

Cut a total of twenty 2-1/2" Strip E segments.

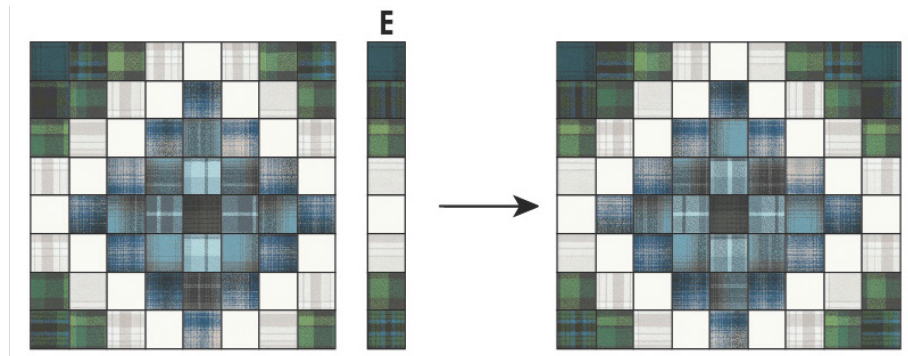


Assemble the Blocks

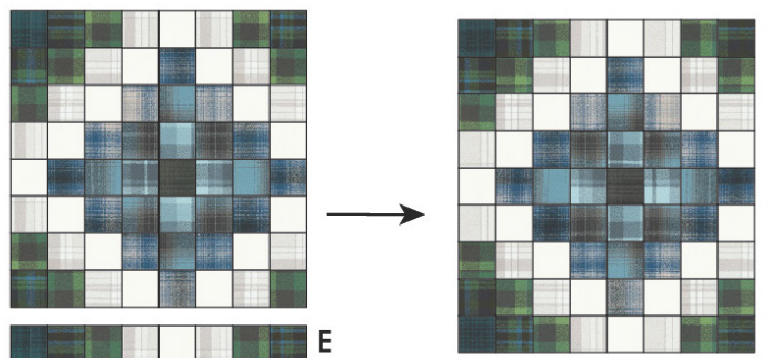
Step 6: Select one A segment, two B segments, two C segments, two D segments, and one E segment. Sew the segments together in the order shown. Press the seams open. Make twelve A Blocks.



Step 7: Select one A Block and one E segment. Sew the segment to the block as shown. Press the seams open. Make three B Blocks.



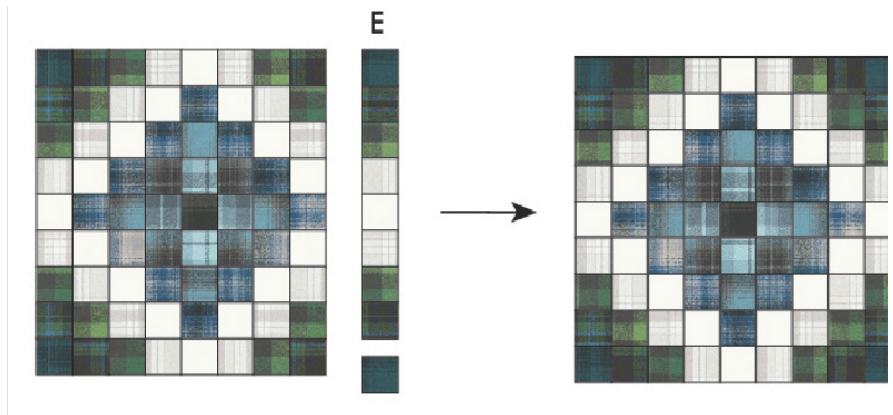
Step 8: Select one A Block and one E segment. Sew the segment to the block as shown. Press the seams open. Make three C Blocks.



Step 9: Select one E segment. Carefully separate the Fabric I square from the end of the segment using a seam ripper.



Step 10: Select one C Block, one E segment, and the Fabric I square. Sew the Fabric I square to the end of the E segment, and press the seam towards the center. Sew the segment to the C Block as shown. Press the seams open to complete the D square.



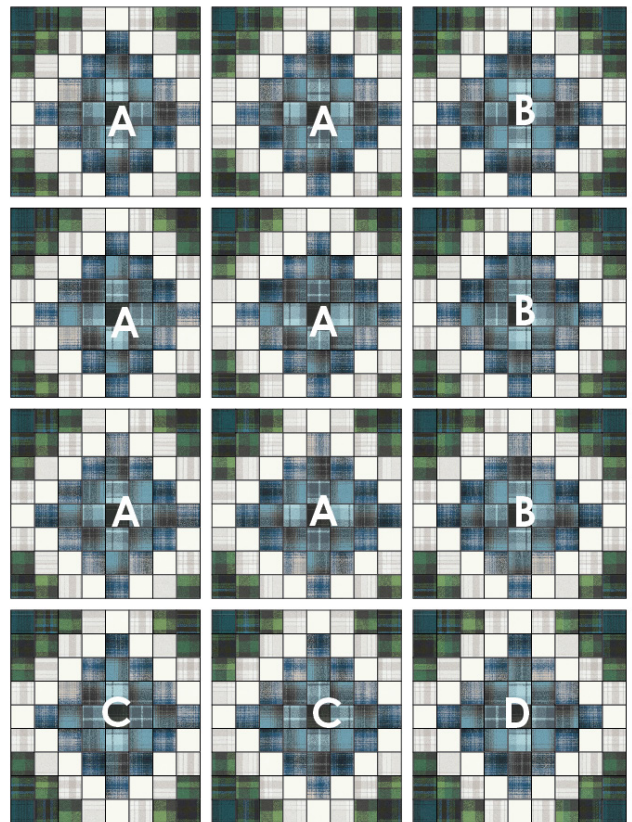
Assemble the Quilt

Step 11: Arrange the blocks in four rows of three in the order shown in the Quilt Assembly Diagram. Note the orientation of each block.

Step 12: Sew the blocks together to form rows. Press the seams open.

Step 13: Sew the rows together. Press the seams open.

Your quilt top is complete! Baste, quilt, bind, and enjoy!



This pattern may be used for personal purposes only and may not be reproduced in any form without the express permission from Robert Kaufman Fabrics. This pattern is not for resale. All patterns, unless otherwise attributed, are © Robert Kaufman Co., Inc. 2005-2023. All rights reserved.