

LUXOR

Designed by Robert Kaufman Fabrics
www.robertkaufman.com

Featuring

Valley of the Kings



Finished quilt measures: 57-1/2" x 75-1/2"

Quilt shown in "VINTAGE" colorstory. For alternate colorstories see pages 13-18.

Pattern Level: Advanced Expert











*"My skills are sharp, so I'm ready to
take on the hard stuff."*

ROBERTKAUFMAN
F A B R I C S

For questions about this pattern, please email Patterns@RobertKaufman.com.

Fabric and Supplies Needed

Fabric amounts based on yardage that is 44" wide.

Color	Fabric	Name/SKU	Yardage	Color	Fabric	Name/SKU	Yardage
	A	SRKM-16282-200 VINTAGE	2/3 yard (one panel)		F	SRKM-16290-14 NATURAL	1/2 yard
	B	SRKM-16290-2 BLACK	1/4 yard		G	SRKM-16287-133 GOLD	1/2 yard
	C	SRKM-16283-200 VINTAGE	1-7/8 yard		H	SRKM-16288-200 VINTAGE	1/4 yard
	D	SRKM-16287-14 NATURAL	1 yard		I	SRKM-14476-2 BLACK <i>* includes binding</i>	1 yard
	E	SRKM-16287-12 GREY	1-1/4 yard		J	SRKM-16285-200 VINTAGE	1 yard
Copyright 2016, Robert Kaufman For individual use only - Not for resale				You will also need: 5 yards for backing			

Notes Before You Begin

- Read through all of the instructions before beginning.
- All of the seam allowances are 1/4" unless otherwise noted.
- Press seam allowances open unless otherwise noted.
- Width of fabric (WOF) is equal to at least 44" wide.
- Right sides together has been abbreviated to RST.
- Remember to measure twice and cut once!

From Fabric A, fussy cut:

one 22-1/2" x 40-1/2" panel

From Fabric B, cut:

four 1-1/2" x WOF strips. Trim to yield:

two 1-1/2" x 40-1/2" side sashing strips

two 1-1/2" x 24-1/2" top/bottom sashing strips

From Fabric C, cut:

eight from Template 1

eighteen from Template 4

From Fabric D, cut:

six from Template 2

two from Template 3

two from Template 3, reversed

sixteen from Template 5

two from Template 6

two from Template 6, reversed

From Fabric E, cut:

four from Template 7

six from Template 2

two from Template 3

two from Template 3, reversed

sixteen from Template 5

two from Template 6

two from Template 6, reversed

From Fabric F, cut:

twenty-four from Template 8

From Fabric G, cut:

twenty-eight from Template 8

From Fabric H, cut:

four from Template 9

From Fabric I, cut:

seven 2" x WOF strips. Sew together, end-to-end, then trim to yield:

two 2" x 60" strips

two 2" x 78" strips

seven 2-1/2" x WOF strips for the binding

From Fabric J, cut:

nine 3-1/2" x **length of fabric** strips. Fussycut as much as possible along the length of the print to allow the print to continue when strips are sewn together. Sew together, end-to-end, then trim to yield:

two 3-1/2" x 60" strips

two 3-1/2" x 78" strips

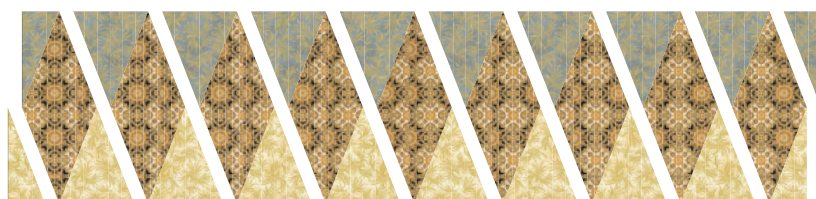
Assemble the Quilt Center

Step 1: Sew the Fabric B side sashing strips to the sides of the center panel. Press seams toward the sashing. Sew the Fabric B top/bottom sashing strips to the center panel. Press seams toward the sashing.

Assemble the Pieced Borders



Top/Bottom Borders



Side Borders (Shown rotated)

Step 2: Sew the Template 1, 2 and 3 pieces together as illustrated. Sew into diagonal columns first, then sew the diagonal units together to form the top border, which measures 12-1/2" x 24-1/2". Press all seams open. Repeat to sew the bottom border.

Step 3: Sew the Template 4, 5 and 6 pieces together as illustrated. Sew into diagonal columns first, then sew the diagonal units together to form one side border, which measures 12-1/2" x 42-1/2". Press all seams open. Repeat to sew the remaining side border.

Step 4: Sew the side borders to each side of the quilt center, noting the fabric placement in the Quilt Assembly Diagram.

Assemble the Corner Blocks

Step 5: Sew together six Fabric F* and seven Fabric G* pieces from Template 8 pieces along the longest edge, alternating fabrics and beginning and ending with a Fabric G piece. Press all seams to the darker fabric. Repeat to make four curved fan units.

* For the Jewel Colorstory, use six Fabric E and seven Fabric F pieces.



Step 6: Fold and finger press a crease in the center of the curves for the Template 7 and 9 pieces and the inner and outer curves of the curved fan unit from Step 5.

Step 7: Sew a Template 7 and 9 piece to the curved fan unit, pinning at the center creases, ends and at several midpoints in between. Clip the seam allowance along the curve and press to one side. Repeat to make four 12-1/2" square Corner Blocks.



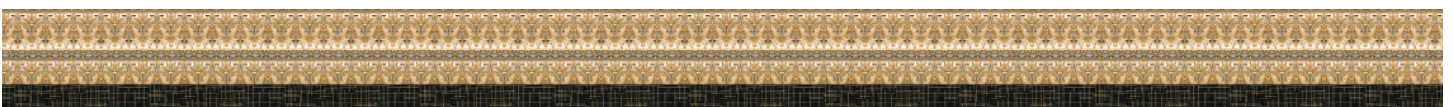
Step 8: Sew a Corner Block unit to either end of the top pieced border from Step 2, noting the orientation of the fabrics in the Quilt Assembly Diagram. Press toward the Corner Block. Repeat to complete the bottom pieced border.

Step 9: Sew the Step 8 border units to the top and bottom of the quilt. Press seams open.

Assemble the Mitered Borders



Step 10: Sew a 2" x 60" strip to one long side of a 3-1/2" x 60" strip to create the top mitered border. Press seam toward the darker fabric. Repeat to create the bottom mitered border.



Step 11: Sew a 2" x 78" strip to one long side side of a 3-1/2" x 78" strip to create a side mitered border. Press seam toward the darker fabric. Repeat to create the second side mitered border.

Step 12: Center and pin one 60" top border to the quilt top, with the 2" strip on the mitered border next to the quilt center. Sew the border, starting and stopping 1/4" from each end of the quilt top. Repeat for three other edges, using the 78" lengths for the side borders.



Step 13: Fold the quilt diagonally, right sides together and align two of the borders directly on top of each other. Note: these borders are cut longer than necessary. You will trim them after sewing the mitered corner.



Step 14: Use your ruler to draw a line from the corner of the quilt to the edge of the border. Trim off excess border along the line and sew 1/4" in from the edge. Begin at the point where your border stitching had ended and sew to the edge of the border. Press the seam open.

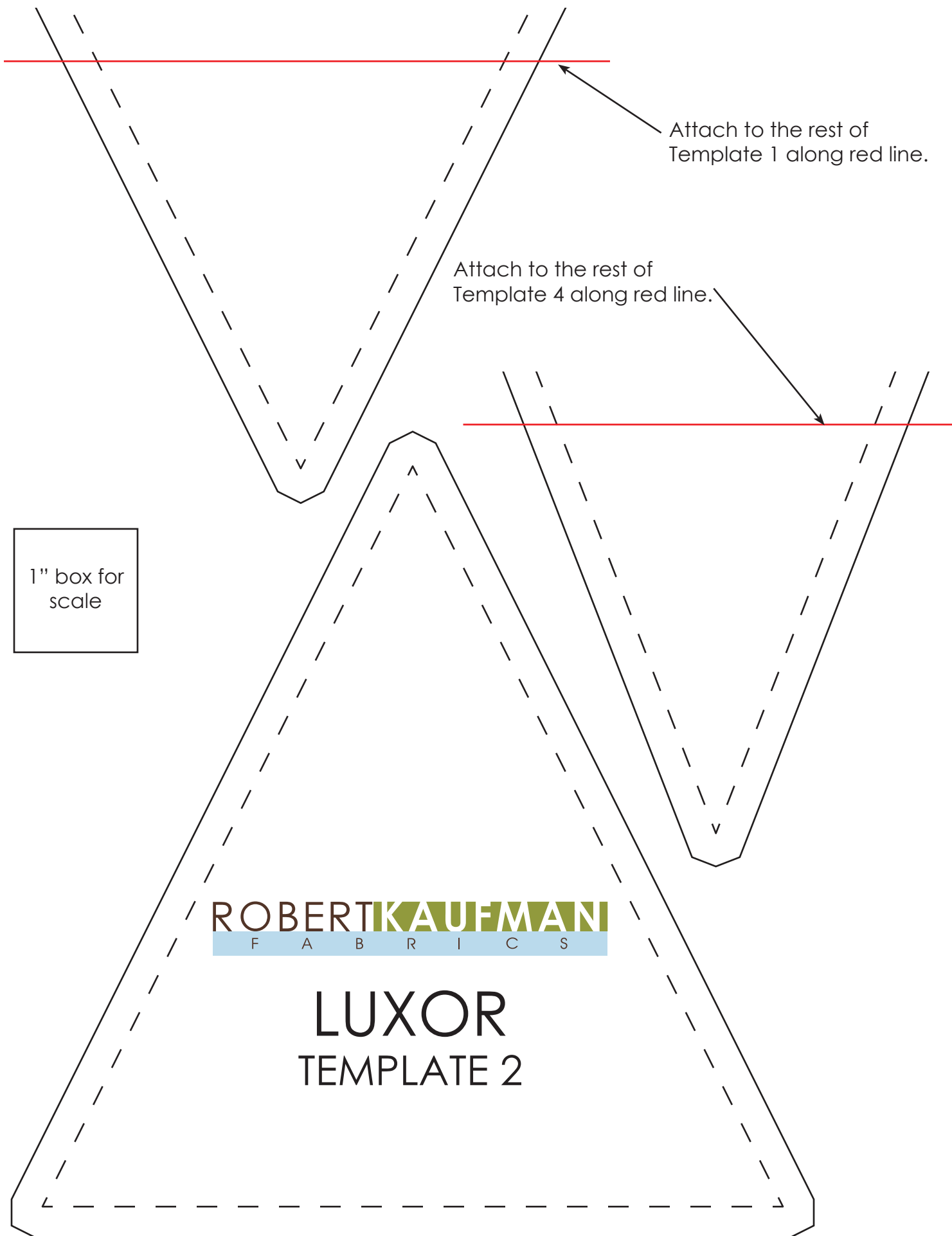


Your quilt top is now complete! Baste, quilt, bind and enjoy!

1" box for
scale

ROBERT KAUFMAN
F A B R I C S

LUXOR
TEMPLATE 1



Attach to the rest of
Template 1 along red line.

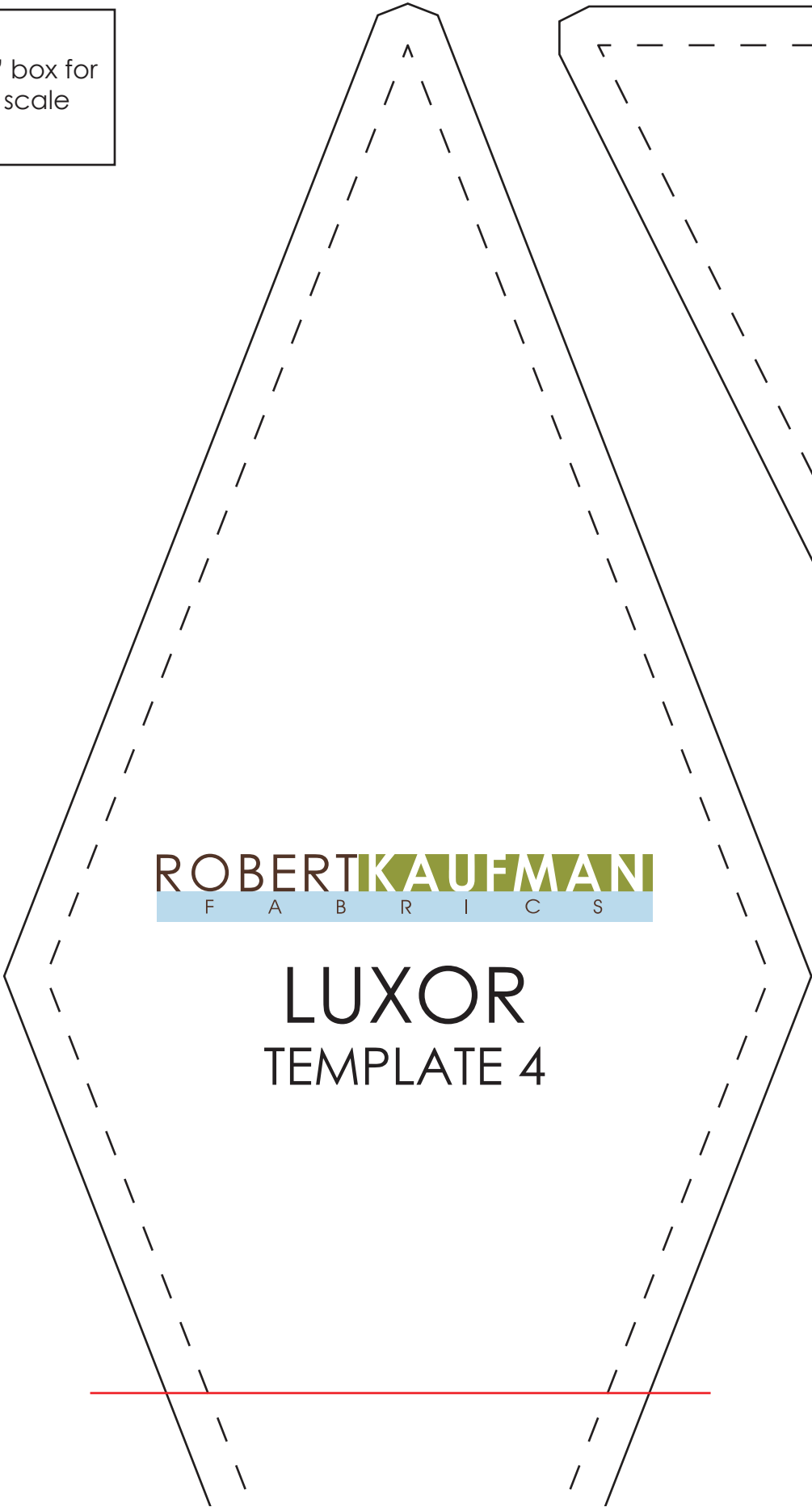
Attach to the rest of
Template 4 along red line.

1" box for
scale

ROBERTKAUFMAN
F A B R I C S

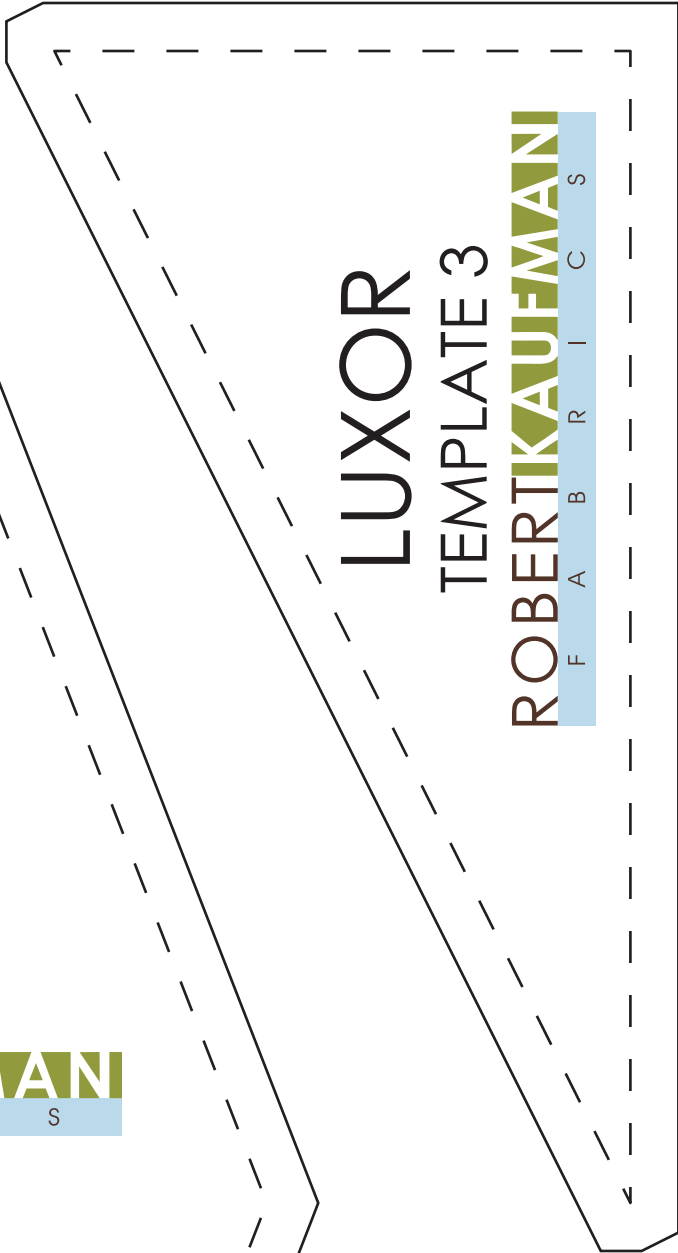
LUXOR
TEMPLATE 2

1" box for
scale



ROBERTKAUFMAN
F A B R I C S

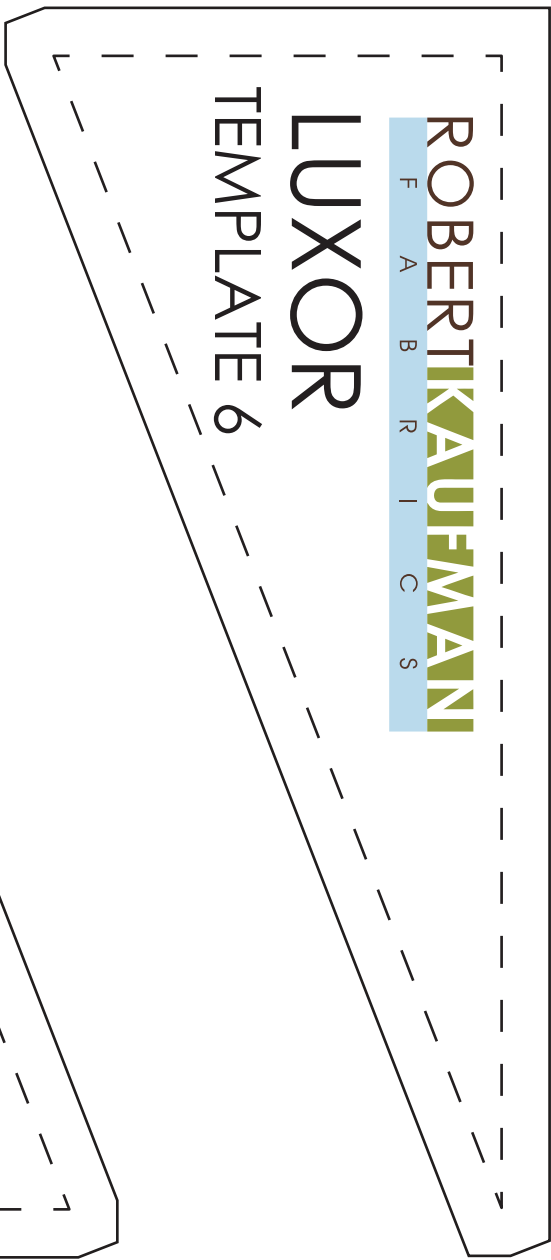
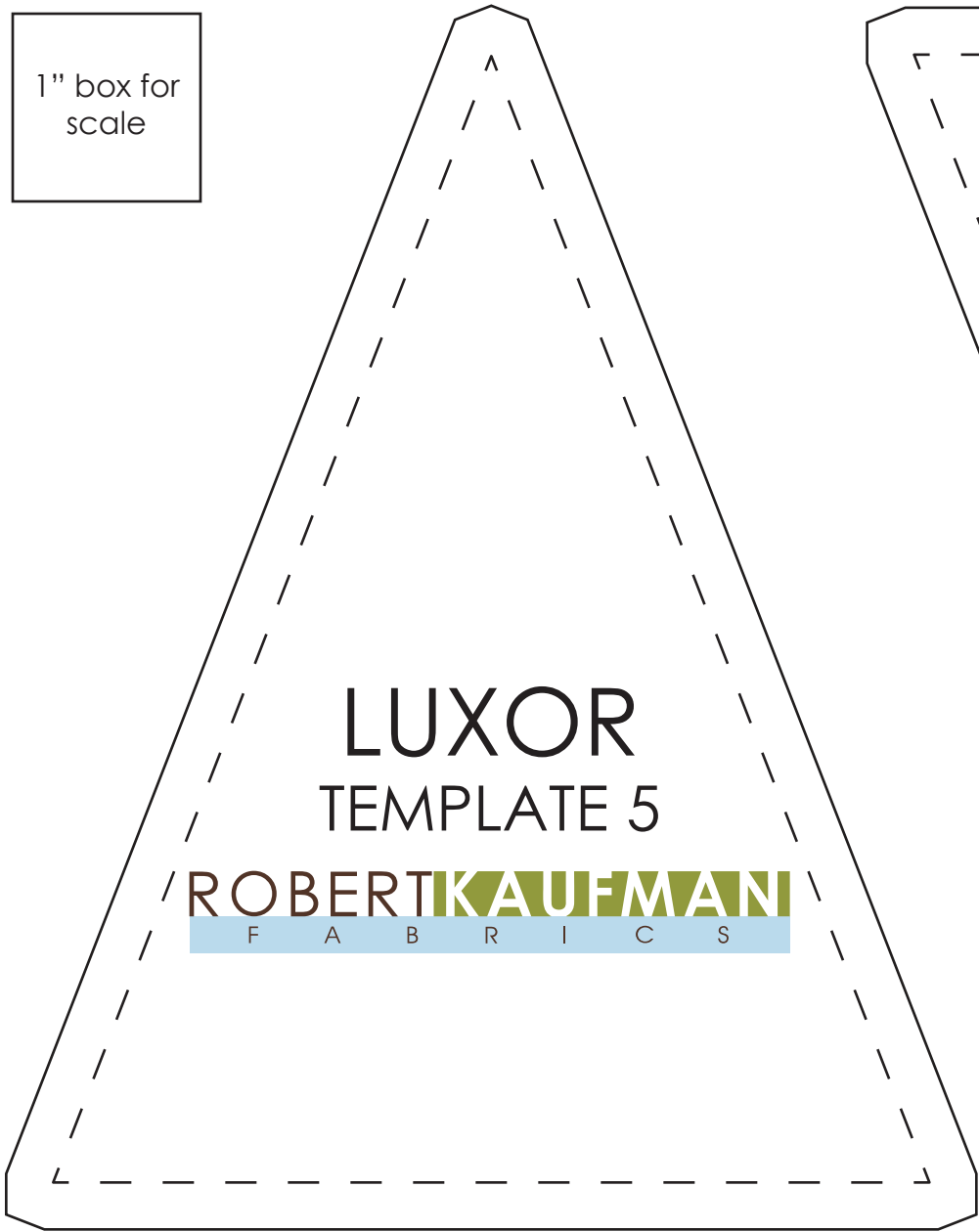
LUXOR
TEMPLATE 4



LUXOR
TEMPLATE 3

ROBERTKAUFMAN
F A B R I C S

1" box for
scale



ROBERT KAUFMAN
F A B R I C S

LUXOR TEMPLATE 7

A

Attach to the rest of
Template 7 along red
line labeled A.

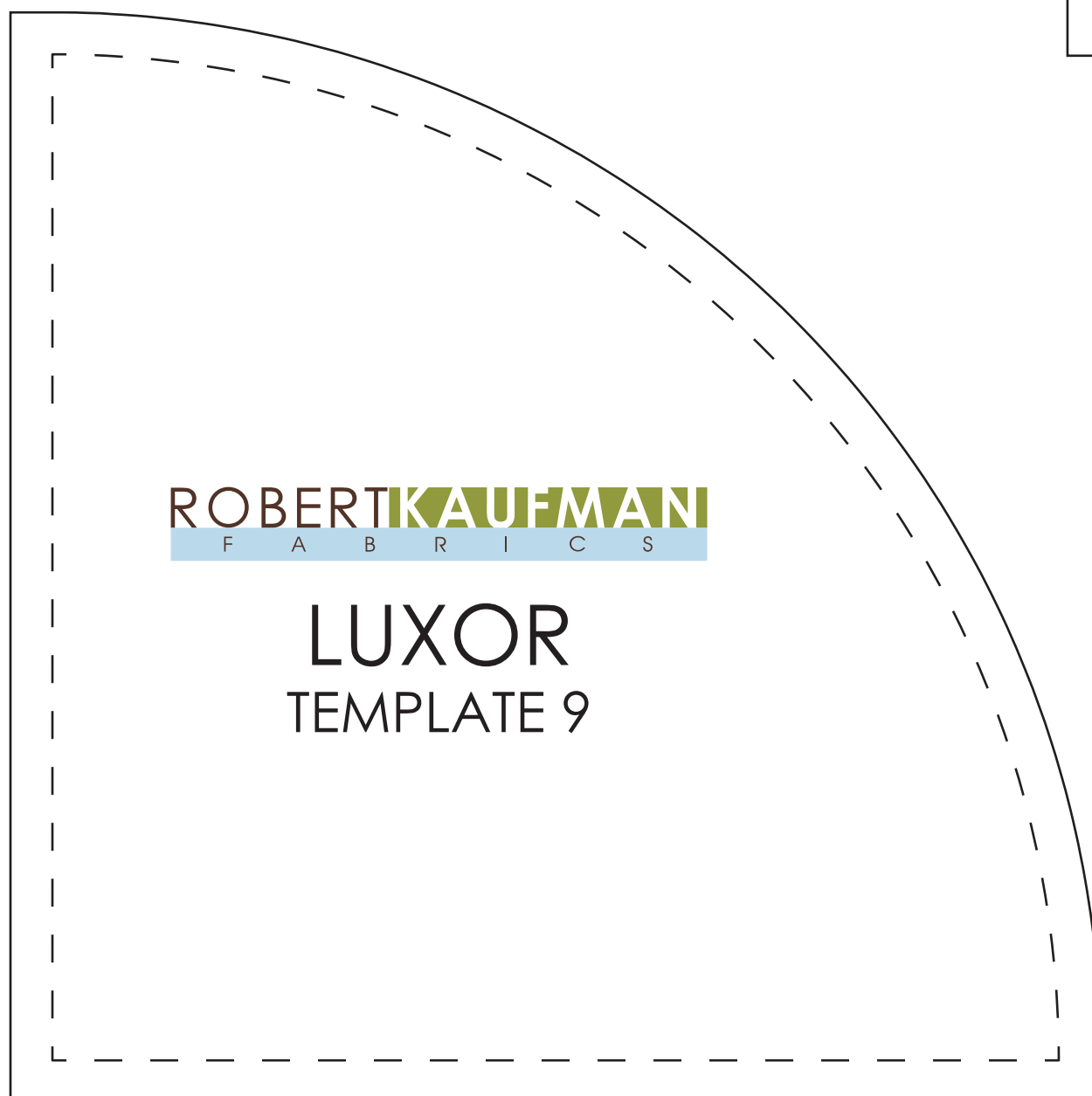
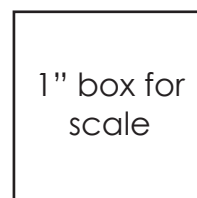
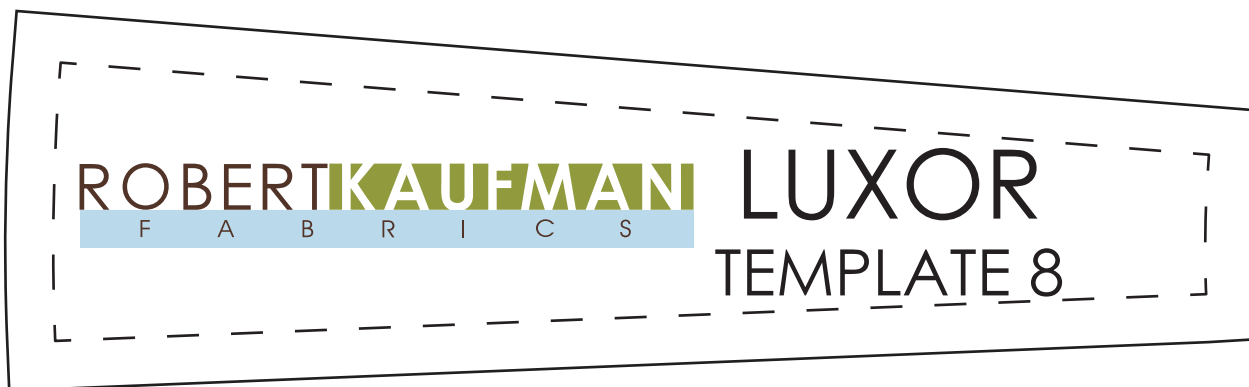
A

B

Attach to the rest of
Template 7 along red
line labeled B.

1" box for
scale

B





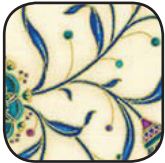







Luxor - JEWEL Colorstory

Fabric and Supplies Needed

Fabric amounts based on yardage that is 44" wide.

Color	Fabric	Name/SKU	Yardage	Color	Fabric	Name/SKU	Yardage
	A	KM-16282-201 JEWEL	2/3 yard (one panel)		E	SRKM-16290-14 NATURAL	1/2 yard
	B	SRKM-16290-201 JEWEL	2-1/8 yards		F	SRKM-16289-78 PEACOCK	1/2 yard
	C	SRKM-16289-201 JEWEL	1 yard		G	SRKM-16284-201 JEWEL <i>* includes binding</i>	1-1/4 yard
	D	SRKM-16287-70 AQUA	1-1/4 yard		H	SRKM-16285-201 JEWEL	7/8 yard
Copyright 2016, Robert Kaufman For individual use only - Not for resale				You will also need: 5 yards for backing			

Notes for Jewel Colorstory

* For the Jewel Colorstory, use six Fabric E and seven Fabric F pieces.

Cutting Instructions for Jewel Colorstory

From Fabric A, fussy cut:

one 22-1/2" x 40-1/2" panel

From Fabric B, cut:

four 1-1/2" x WOF strips. Trim to yield:

two 1-1/2" x 40-1/2" side sashing strips

two 1-1/2" x 24-1/2" top/bottom sashing strips

eight from Template 1
eighteen from Template 4

From Fabric C, cut:

six from Template 2
two from Template 3
two from Template 3, reversed
sixteen from Template 5
two from Template 6
two from Template 6, reversed

From Fabric D, cut:

four from Template 7
six from Template 2
two from Template 3
two from Template 3, reversed
sixteen from Template 5
two from Template 6
two from Template 6, reversed

From Fabric E, cut:

twenty-four from Template 8

From Fabric F, cut:

twenty-eight from Template 8

From Fabric G, cut:

four from Template 9
seven 2" x WOF strips. Sew together, end-to-end, then trim to yield:
 two 2" x 60" strips
 two 2" x 78" strips
seven 2-1/2" x WOF strips for the binding


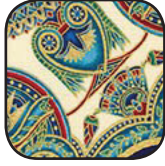
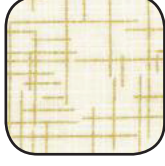
From Fabric H, cut:

nine 3-1/2" x **length of fabric** strips. Fussycut as much as possible along the length of the print to allow the print to continue when strips are sewn together. Sew together, end-to-end, then trim to yield:
 two 3-1/2" x 60" strips
 two 3-1/2" x 78" strips



Fabric and Supplies Needed

Fabric amounts based on yardage that is 44" wide.

Color	Fabric	Name/SKU	Yardage	Color	Fabric	Name/SKU	Yardage
	A	SRKM-16282-163 SPICE	2/3 yard (one panel)		G	SRKM-16290-163 SPICE	1/2 yard
	B	SRKM-16287-11 ROYAL	1/4 yard		H	SRKM-16283-163 SPICE	1/4 yard
	C	SRKM-16287-163 SPICE	1-7/8 yard		I	SRKM-16289-133 GOLD	1/2 yard
	D	SRKM-16287-14 NATURAL	1 yards		J	SRKM-16285-163 SPICE	7/8 yard
	E	SRKM-16284-163 SPICE	1-1/4 yard		K	SRKM-14476-15 IVORY <i>*includes binding</i>	1/2 yard
	F	SRKM-16290-14 NATURAL	1/2 yard	Copyright 2016, Robert Kaufman For individual use only - Not for resale			
				You will also need: 5 yards for backing			

Cutting Instructions for Spice Colorstory

From Fabric A, fussy cut:

one 22-1/2" x 40-1/2" panel

From Fabric B, cut:

four 1-1/2" x WOF strips. Trim to yield:

two 1-1/2" x 40-1/2" side sashing strips

two 1-1/2" x 24-1/2" top/bottom sashing strips

From Fabric C, cut:

eight from Template 1

eighteen from Template 4

From Fabric D, cut:

six from Template 2

two from Template 3

two from Template 3, reversed

sixteen from Template 5

two from Template 6

two from Template 6, reversed

From Fabric E, cut:

four from Template 7

six from Template 2

two from Template 3

two from Template 3, reversed

sixteen from Template 5

two from Template 6

two from Template 6, reversed

From Fabric F, cut:

twenty-four from Template 8

From Fabric G, cut:

twenty-eight from Template 8

From Fabric H, cut:

four from Template 9

From Fabric I, cut:

seven 2" x WOF strips. Sew together, end-to-end, then trim to yield:

two 2" x 60" strips

two 2" x 78" strips

From Fabric J, cut:

nine 3-1/2" x **length of fabric** strips. Fussycut as much as possible along the length of the print to allow the print to continue when strips are sewn together. Sew together, end-to-end, then trim to yield:

two 3-1/2" x 60" strips

two 3-1/2" x 78" strips

From Fabric K, cut:

seven 2-1/4" x WOF strips for the binding