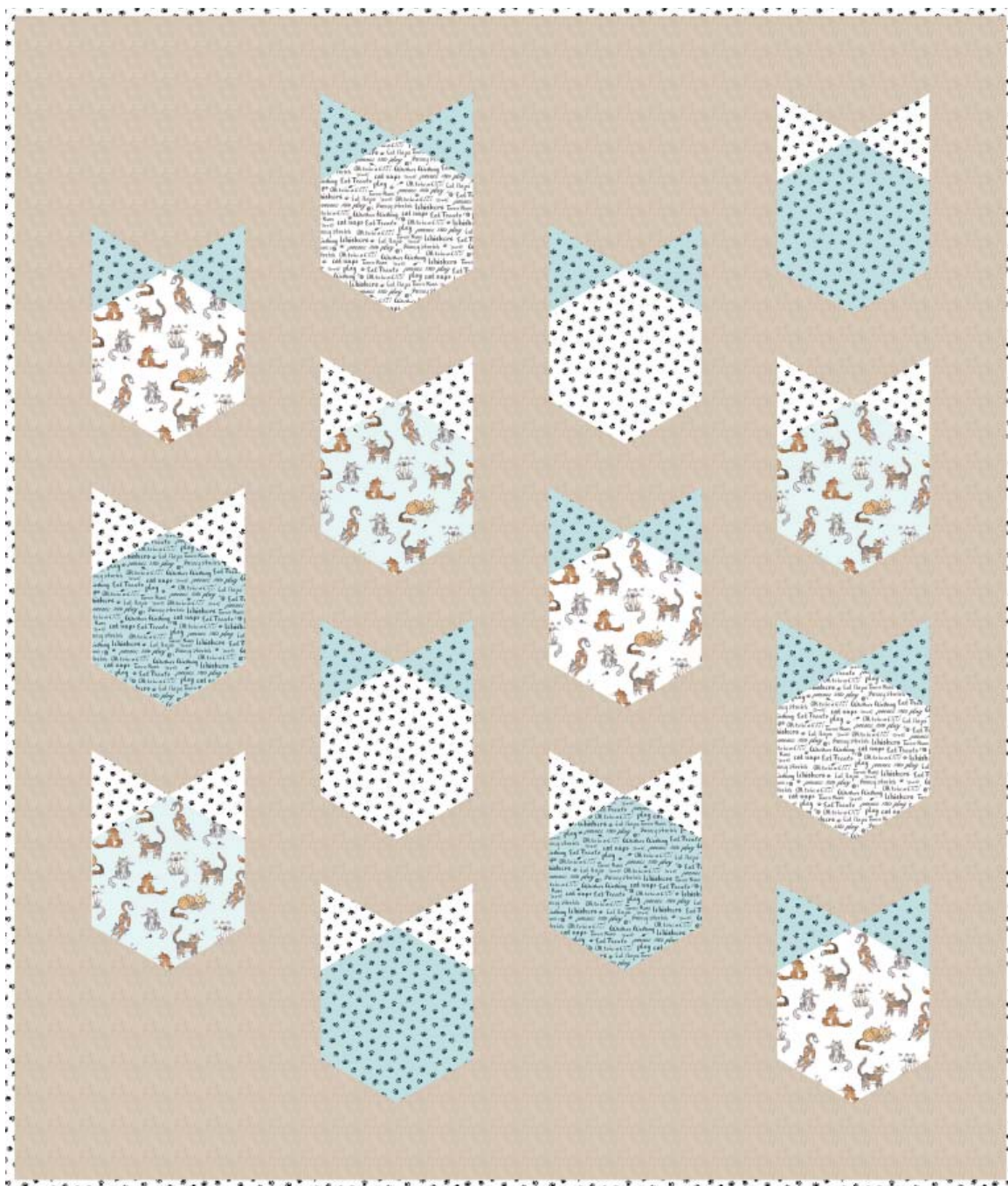


LOS GATOS

Designed by Julia Williams
for Robert Kaufman
www.robertkaufman.com

Featuring Whiskers and Tails



Finished quilt measures: 45" x 55"

Pattern Level: Experienced Intermediate









"I know the ropes and would like to test my skills!"

ROBERT KAUFMAN
F A B R I C S

For questions about this pattern, please email Patterns@RobertKaufman.com.

Fabric and Supplies Needed

Fabric amounts based on yardage that is 42" wide.

Color	Fabric	Name/SKU	Yardage	Color	Fabric	Name/SKU	Yardage
	A	AJX-17206-1 WHITE	1/4 yard		E	AJX-17208-4 BLUE	1/4 yard
	B	AJX-17206-4 BLUE	1/4 yard		F	AJX-17208-1 WHITE	1/4 yard
	C	AJX-17207-4 BLUE	1/4 yard		G	SRK-15373-236 TOASTED ALMOND	2-1/2 yards
	D	AJX-17207-1 WHITE	1/4 yard		Binding*	AJX-17208-1 WHITE <i>*Also used for Fabric F</i>	1/2 yard
<p>Copyright 2017, Robert Kaufman For individual use only - Not for resale</p>				<p>You will also need: 3 yards for backing</p>			

Notes Before You Begin

- Read through all of the instructions before beginning.
- All of the seam allowances are 1/4" unless otherwise noted.
- Press seam allowances open unless otherwise noted.
- Width of fabric (WOF) is equal to at least 42" wide.
- Right sides together has been abbreviated to RST.
- Remember to measure twice and cut once!

Cutting Instructions

Note: Cut Template 1 pieces as shown in order for the print to be oriented correctly in the finished quilt. Example shown of Fabric E



From Fabric A, cut:
three of Template 1

From Fabric B, cut:
three of Template 1

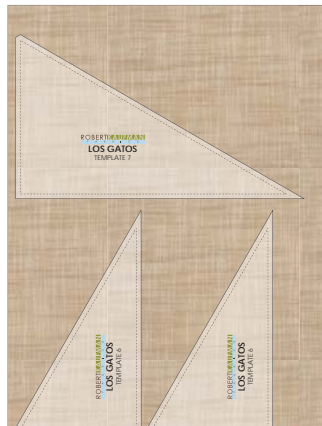
From Fabric C, cut:
two of Template 1

From Fabric D, cut:
two of Template 1

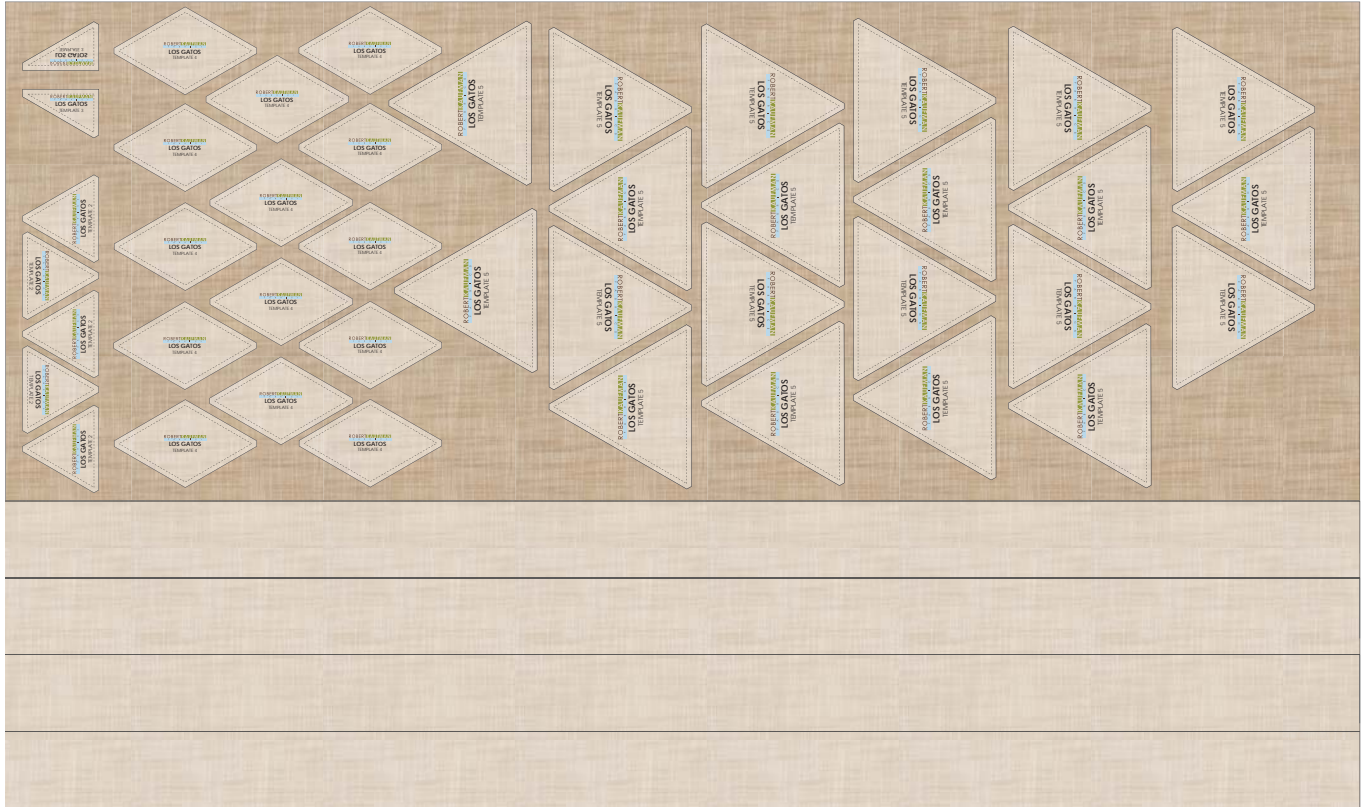
From Fabric E, cut:
two of Template 1
fourteen of Template 2

From Fabric F, cut:
two of Template 1
fourteen of Template 2

From Fabric G, cut:
one 17" x WOF strip. From this, cut:
two of Template 6 on the fold
one of Template 7, with fabric still folded, to create two triangles that are mirror images



From the remaining yardage, cut:
 four 4" x **length** of fabric strips. Set aside for the outer borders.
 five of Template 2
 one of Template 3
 one of Template 3-Reversed
 fourteen of Template 4
 twenty-one of Template 5



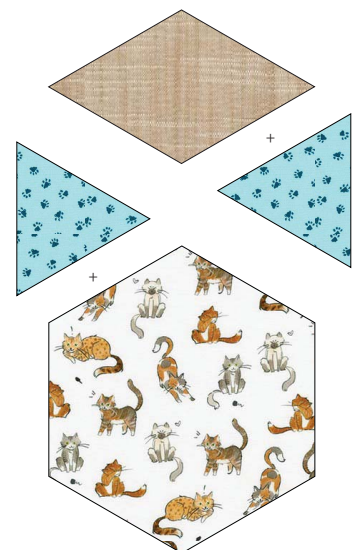
From the Binding Fabric, cut:
 six 2-1/2" x WOF strips

Assemble the Blocks

Step 1: Gather:

- one Template 1 piece
- two Template 2 pieces
- one Template 4 piece

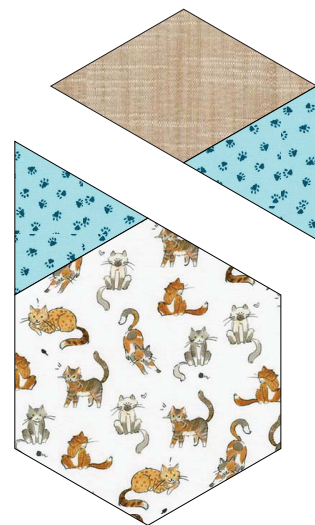
Refer to the quilt cover sample for fabric combinations for each block.



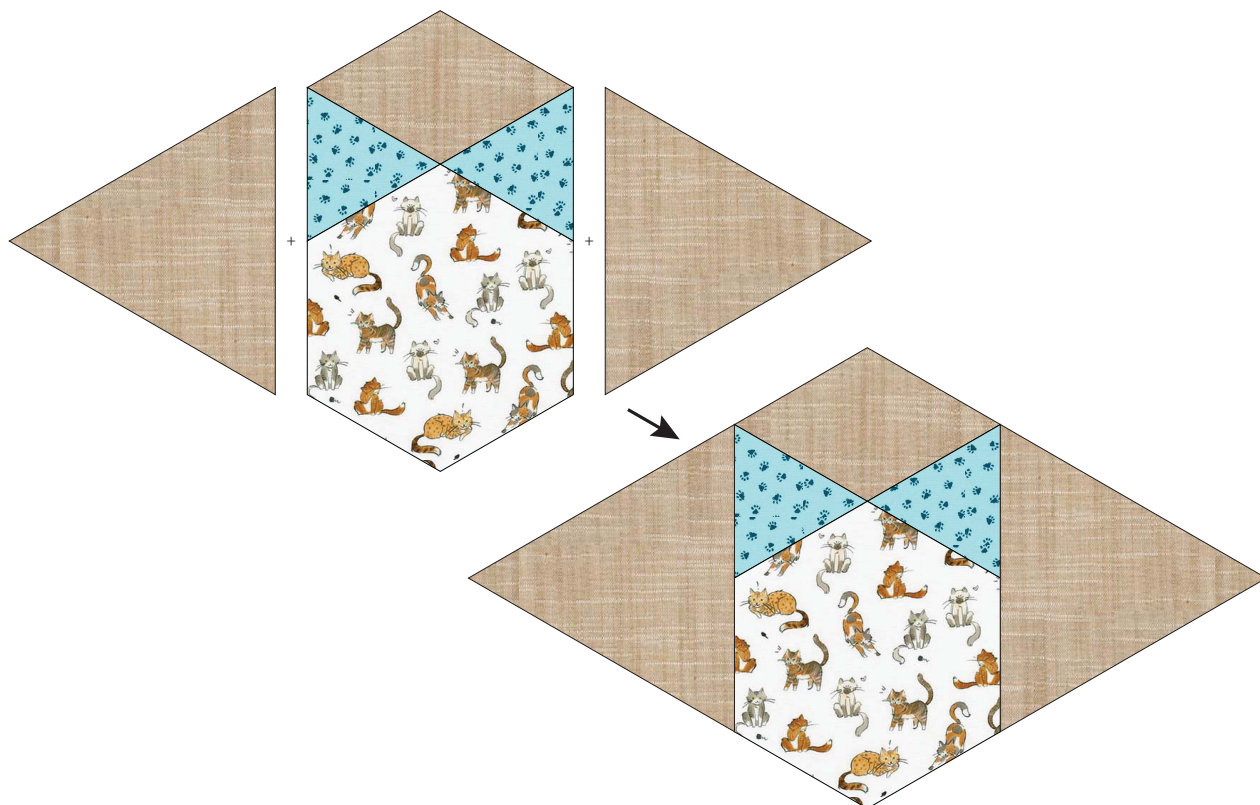
Sew together as indicated, pressing the seams toward the Template 2 (ear) pieces.

Step 2: Sew the two units together, offsetting the seams using the notches so that the seams align when pressed open. Press seams open or to one side.

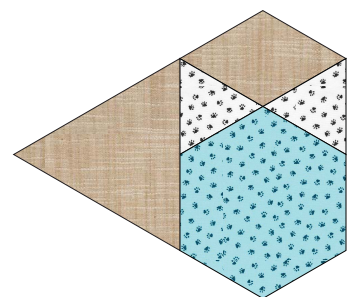
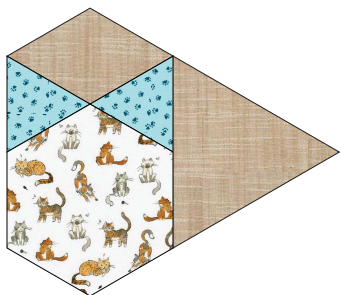
Repeat to make all fourteen cat blocks.



Step 3: Referring to the (Quilt Assembly Diagram) QAD, sew a Template 5 triangle to the left and right sides of seven cat units. Press away from the center unit.

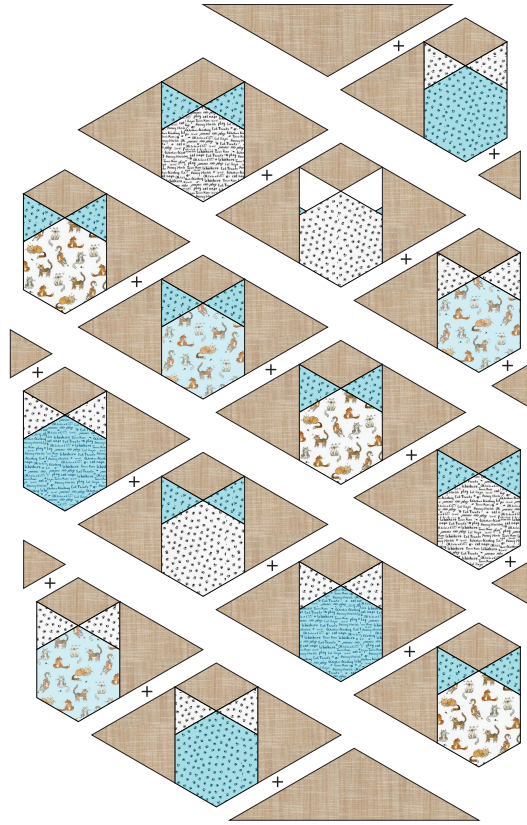


Step 4: Referring to the QAD, sew a Template 5 triangle to the left side of four cat units. Press away from the center unit.



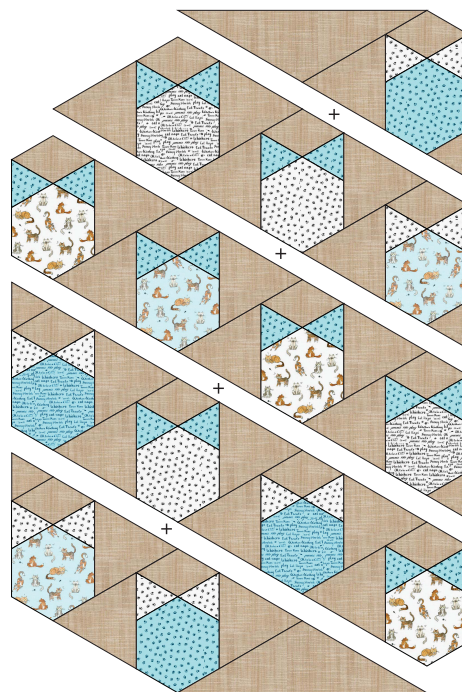
Step 5: Referring to the QAD, sew a Template 5 triangle to the right side of three cat units. Press away from the center unit.

Assemble the Quilt

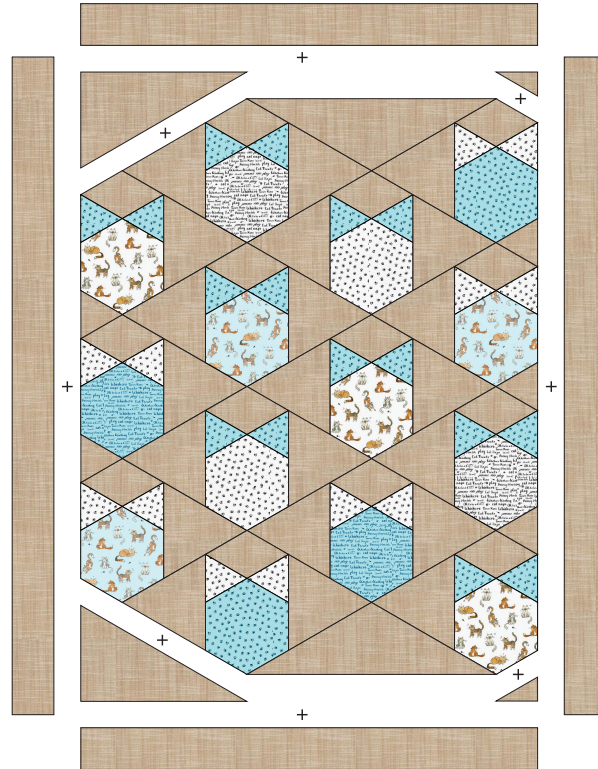


Step 6: Arrange the units to form the quilt top, placing Template 2 and Template 6 as shown. Sew together in diagonal rows, offsetting using the notches. Press seams in opposite directions every other row.

Step 7: Sew the rows together, offsetting the seams by 1/4" so that they align when pressed open. Press the row seams open or to one side.



Step 8: Sew the Template 7 and Template 3 right triangles to the corners of the quilt center as shown. Press toward the triangles.



Step 9: Measure and trim to the width of the quilt. Sew the top and bottom outer borders to the quilt center. Press toward the borders. Measure and trim to the length of the quilt. Sew the side outer borders to the sides of the quilt center. Press toward the borders.

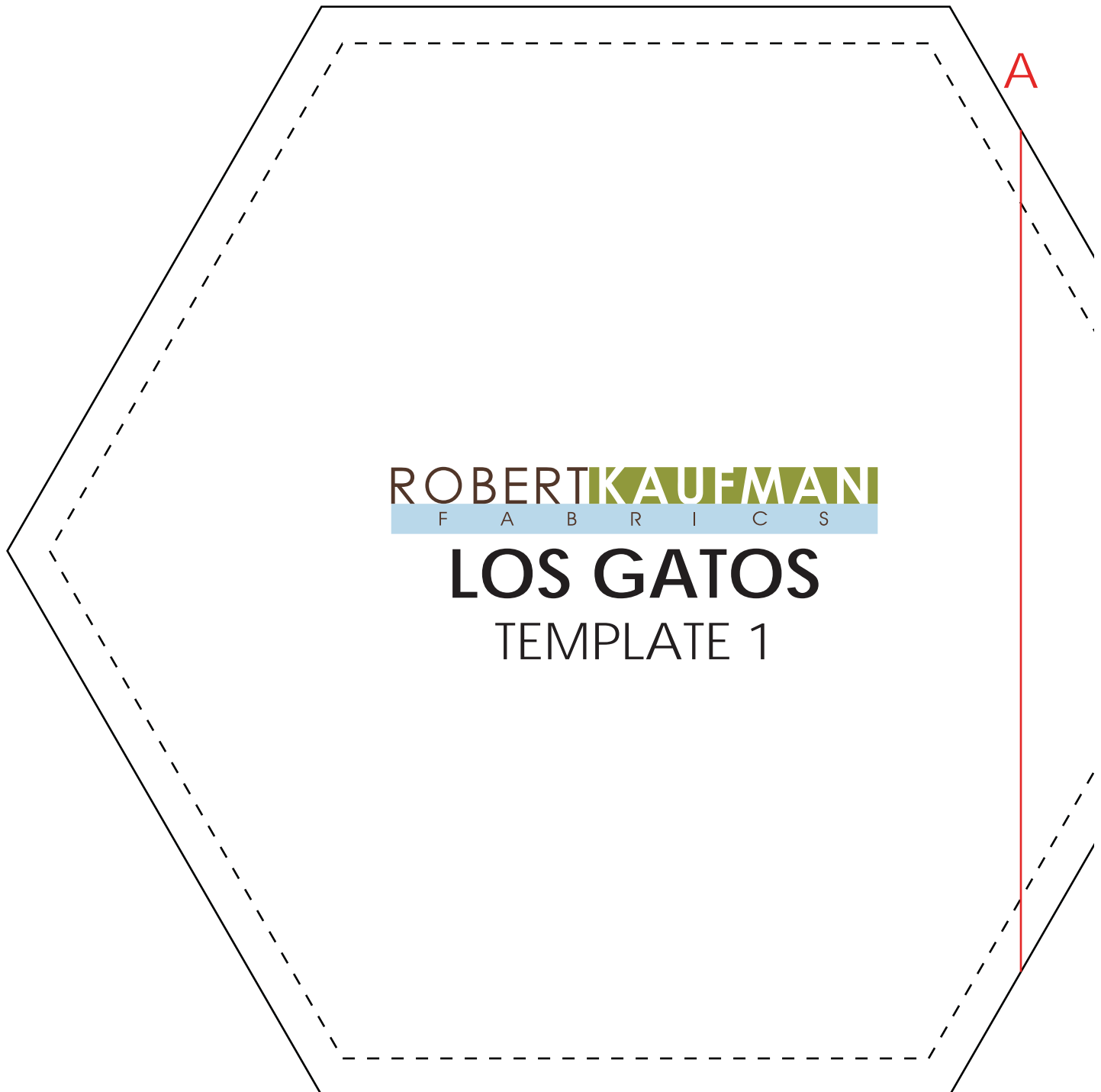
Your quilt top is complete. Baste, quilt, bind and enjoy

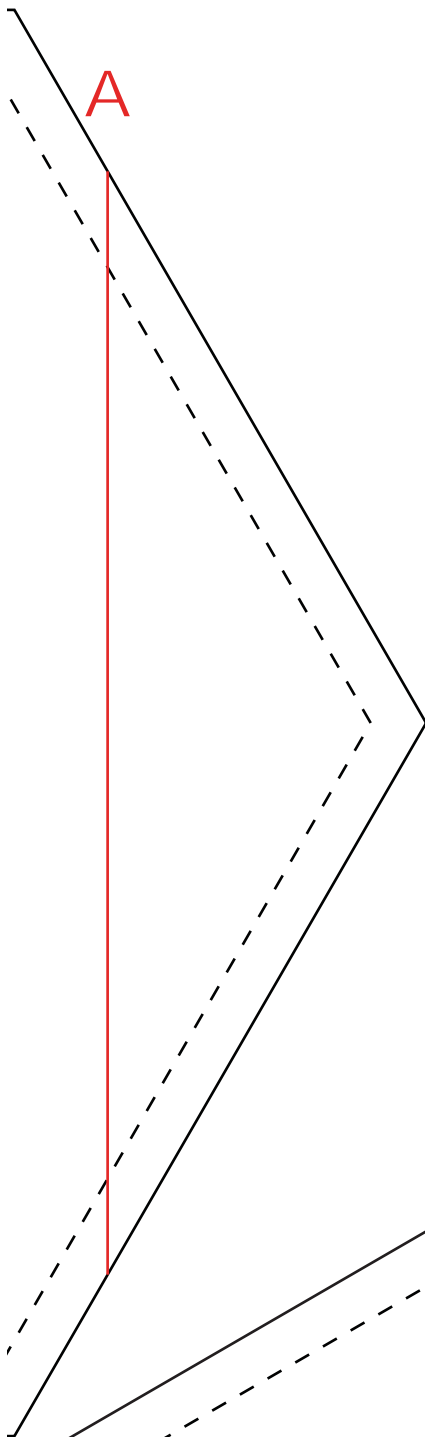
Print at 100%.

Check size printed correctly using 1" box for scale prior to cutting fabric.

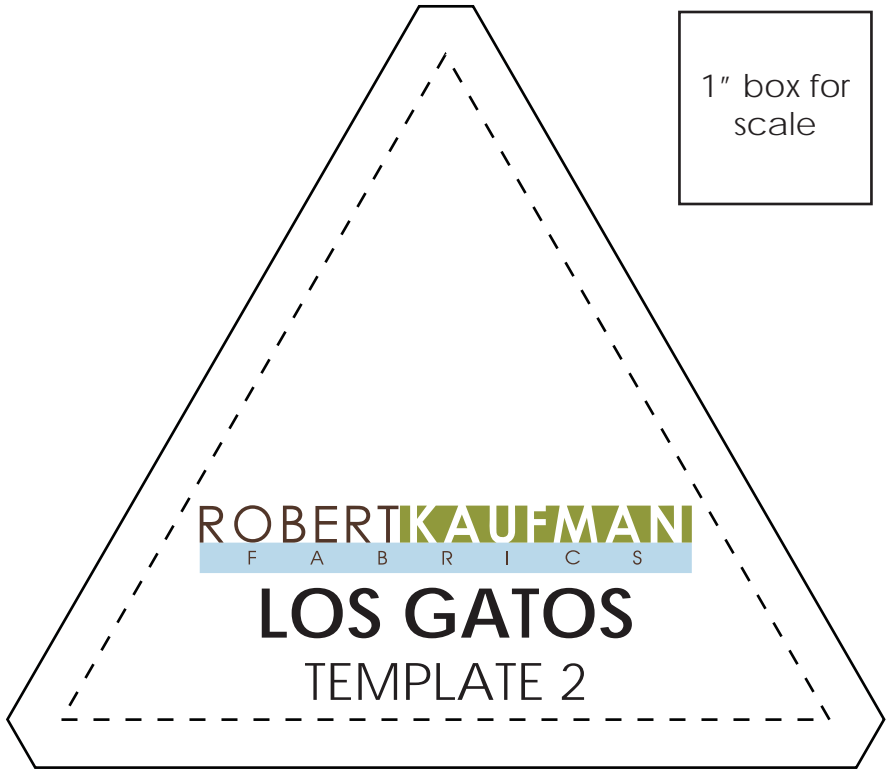
Align multiple pieces of each template along red line and tape together.

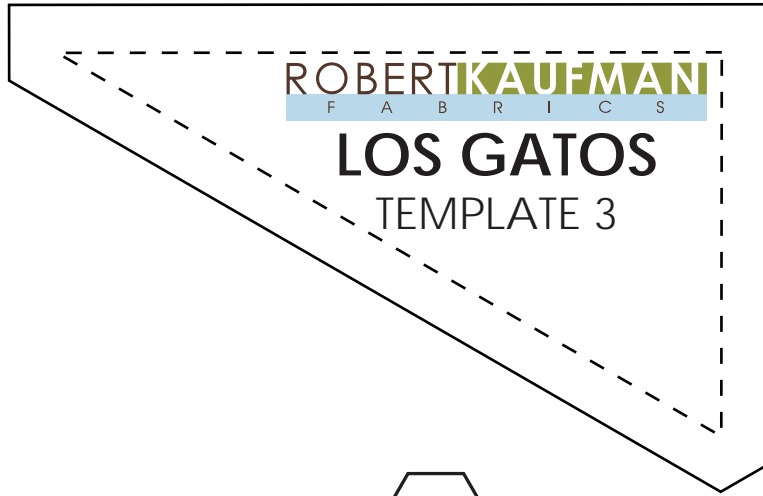
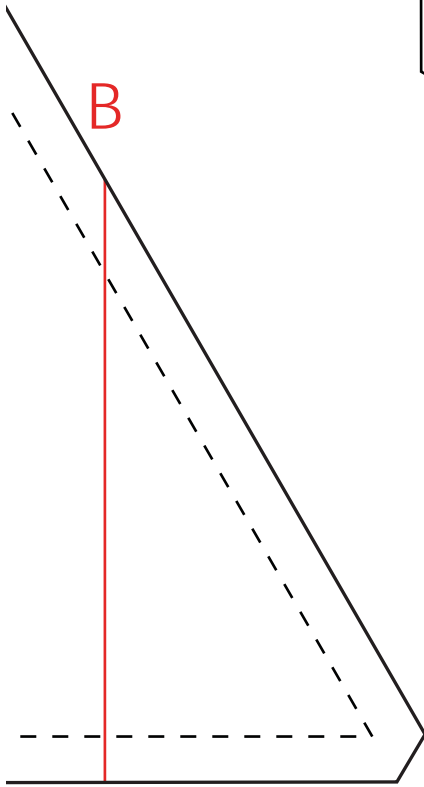
1" box for
scale



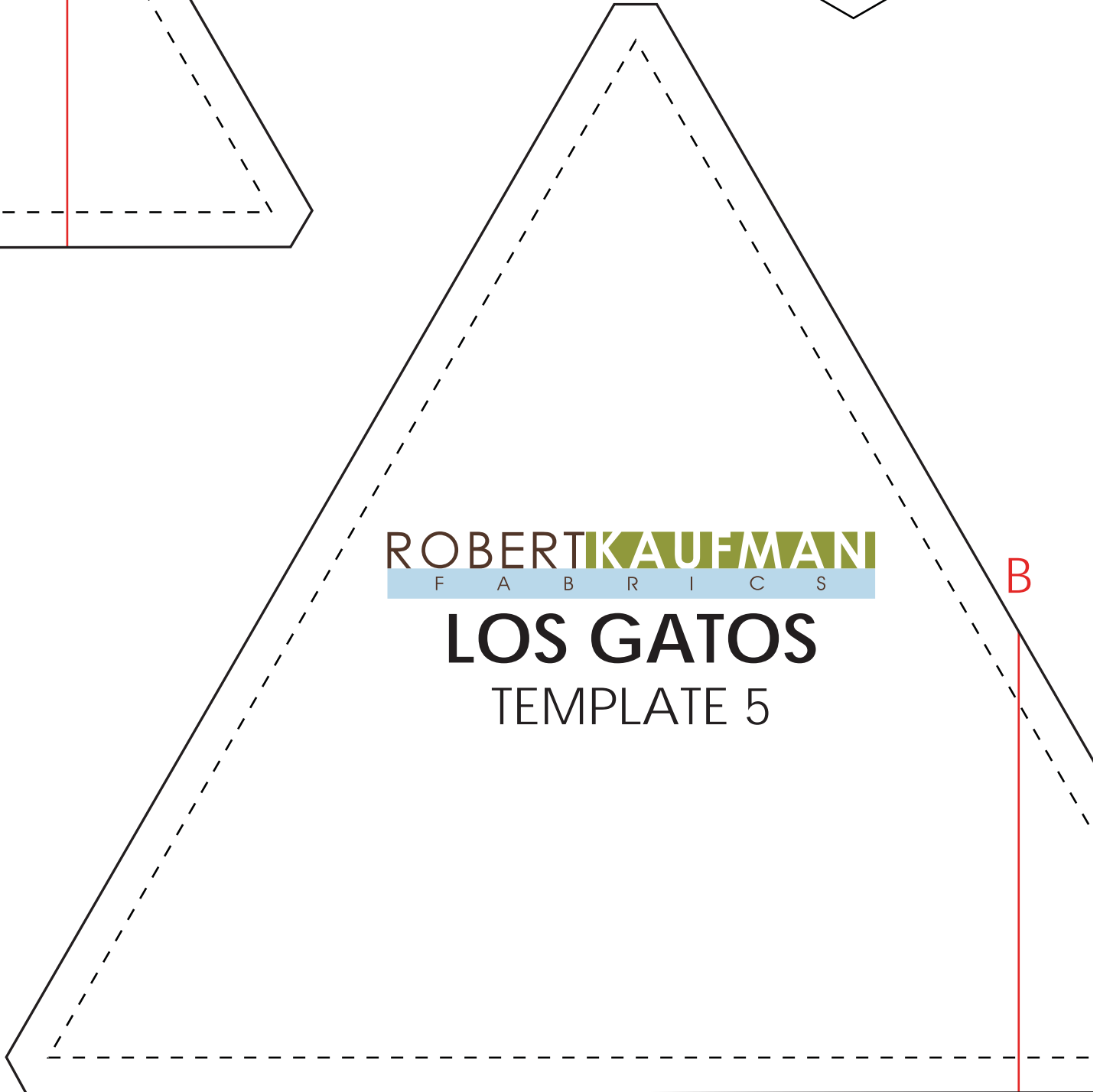


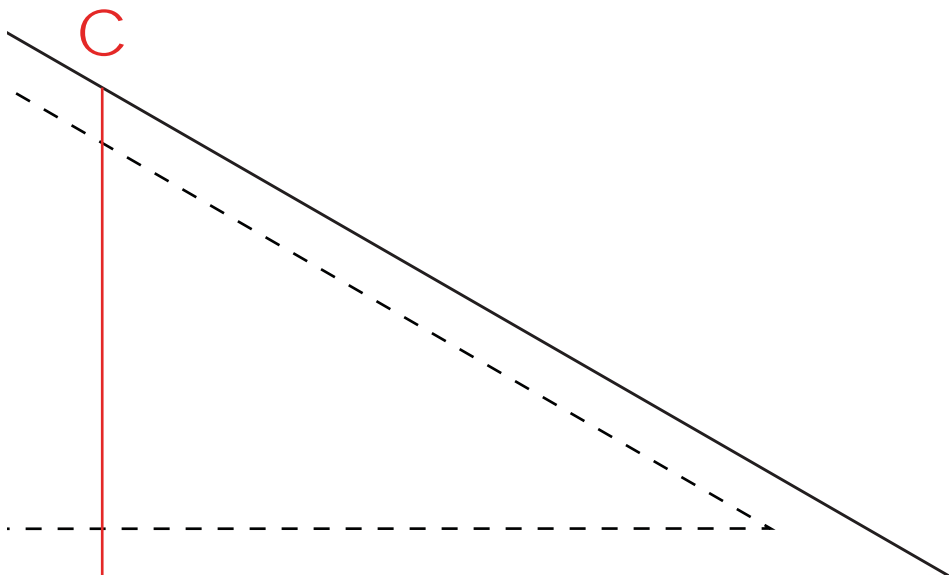
1" box for
scale



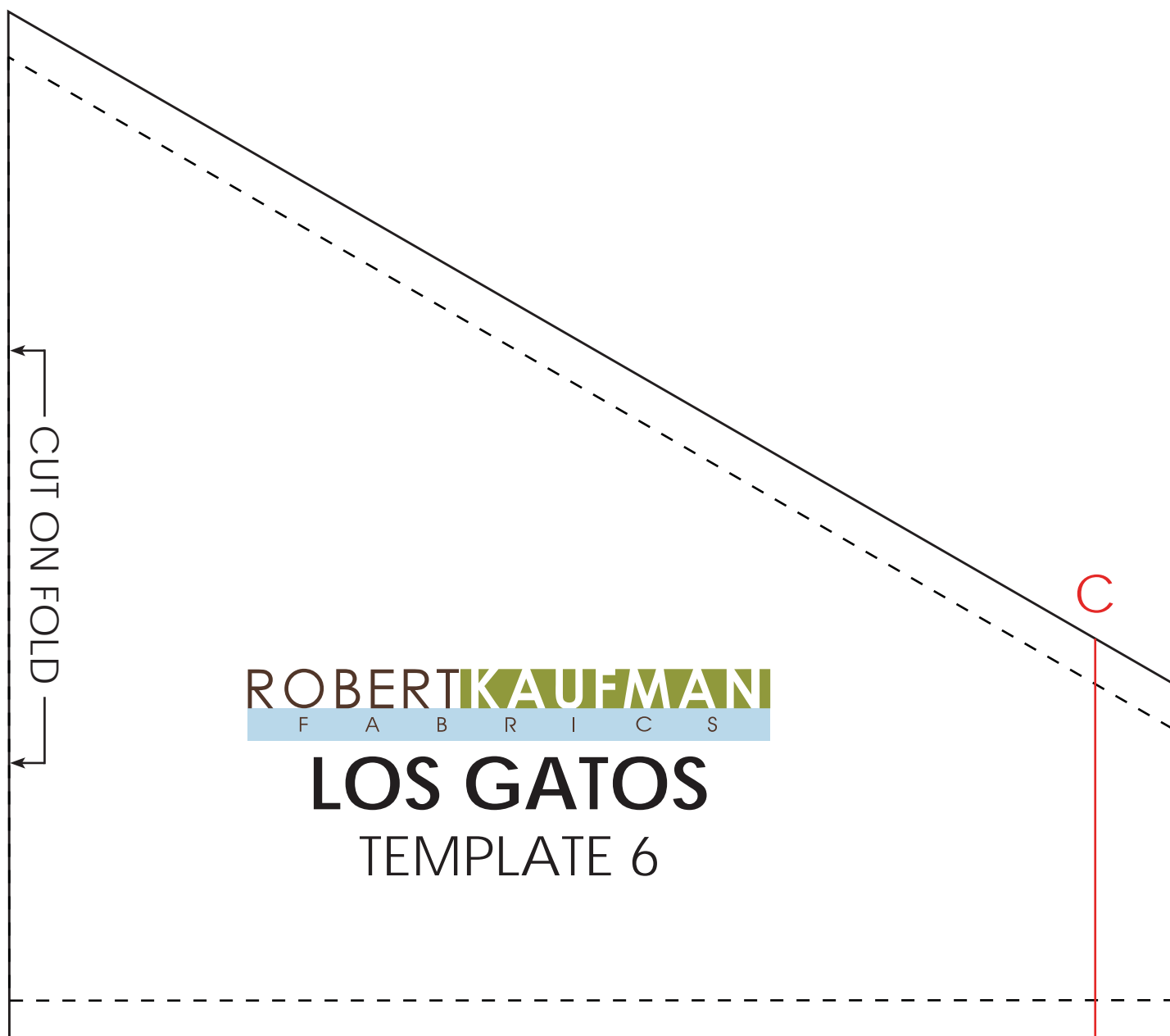


1" box for
scale





1" box for
scale



ROBERT KAUFMAN
F A B R I C S

LOS GATOS

TEMPLATE 6

1" box for
scale

D

ROBERT KAUFMAN
F A B R I C S

LOS GATOS

TEMPLATE 7

1" box for
scale

