

LAVENDER BLESSINGS

Designed by Debbie Beaves
www.robertkaufman.com

Featuring FLOWERHOUSE
Lavender Blessings
Debbie Beaves



Finished quilt measures: 63" x 72"









Difficulty Rating: **Beginner**

ROBERTKAUFMAN
F A B R I C S

For questions about this pattern, please email Patterns@RobertKaufman.com.

Fabric and Supplies Needed

Fabric amounts based on yardage that is 42" wide.

Color	Fabric	Name/SKU	Yardage	Color	Fabric	Name/SKU	Yardage
	A	FLH-20365-14 NATURAL	7/8 yard		E	FLH-20363-234 WISTERIA	3/4 yard
	B	FLH-20363-459 FRESH SAGE	1/4 yard		F	FLH-20365-459 FRESH SAGE	5/8 yard
	C	FLH-20365-6 PURPLE	7/8 yard		G	FLH-20360-460 MIDNIGHT PURPLE	1-1/8 yard
	D	FLH-20361-460 MIDNIGHT PURPLE	1-1/8 yard		Binding	FLH-20364-14 NATURAL	1/2 yard
<p>Copyright 2022, Robert Kaufman For individual use only - Not for resale</p>				<p>You will also need: 4 yards for backing</p>			

Notes Before You Begin

- Read through all of the instructions before beginning.
- All of the seam allowances are 1/4" unless otherwise noted.
- Press seam allowances open unless otherwise noted.
- Width of fabric (WOF) is equal to at least 42" wide.
- Right sides together has been abbreviated to RST.
- Remember to measure twice and cut once!

Cutting Instructions

From Fabric A, cut:

four 6-1/2" x WOF strips. Subcut:

twenty 6-1/2" squares

From the remainder of the last strip, subcut:

two 2-1/2" squares for the Nine Patch units

one 2-1/2" x WOF strip. Set aside for strip piecing the Nine Patch units.

From Fabric B, cut:

one 6-1/2" x WOF strip. Subcut:

six 6-1/2" squares

From Fabric C, cut:

two 6-1/2" x WOF strips. Subcut:

ten 6-1/2" squares

Trim the remainder of the last strip to 2-1/2" wide, then subcut:

two 2-1/2" squares for the Nine Patch units

six 2-1/2" x WOF strips. Set aside three for strip piecing the Nine Patch units. From the remainder, subcut:

forty-four 2-1/2" squares. Mark a diagonal line on the back of each square.

From Fabric D, cut:

three 6-1/2" x WOF strips. Subcut:

fourteen 6-1/2" squares

Trim the remainder of the last strip to 2-1/2" wide, then subcut:

two 2-1/2" squares for the Nine Patch units

seven 2-1/2" x WOF strips. Set aside for strip piecing the Nine Patch units.

From Fabric E, cut:

two 9-3/4" x WOF strips. Subcut:

six 9-3/4" squares. Cut each square in half along both diagonals for the side setting triangles. Note: two triangles will not be used.

Trim the remainder of the second strip to 5-1/8" wide. Subcut:

two 5-1/8" squares. Cut each square in half along one diagonal for the corner setting triangles.

two 2-1/2" x WOF strips. Set aside for strip piecing the Nine Patch units.

From Fabric F, cut:

two 2-1/2" x WOF strips. Set aside for strip piecing the Nine Patch units.

six 2-1/2" x WOF strips. Sew together, end-to-end, and set aside for the inner borders.

From Fabric G, cut:

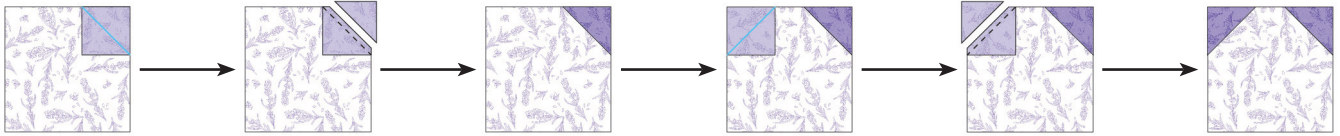
seven 5" x WOF strips. Sew together, end-to-end, and set aside for the outer borders.

From the Binding, cut:

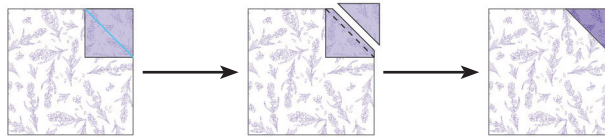
seven 2-1/2" x WOF strips.

Assemble the Stitch and Flip Units

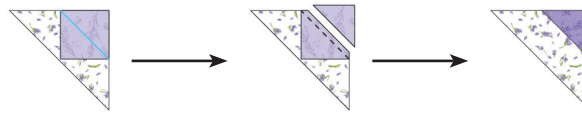
Step 1: Place a 2-1/2" Fabric C square in the upper right corner of a 6-1/2" Fabric A square, right sides together. Note the orientation of the marked diagonal line. Sew on the marked line, then trim away the excess fabric, leaving a 1/4" seam allowance. Press. Repeat on the upper left corner with another 2-1/2" Fabric C square. Repeat to make four units like this.



Step 2: Repeat the process from Step 1, but this time only sew one Fabric C square to the Fabric A square. Repeat to make fourteen units like this.

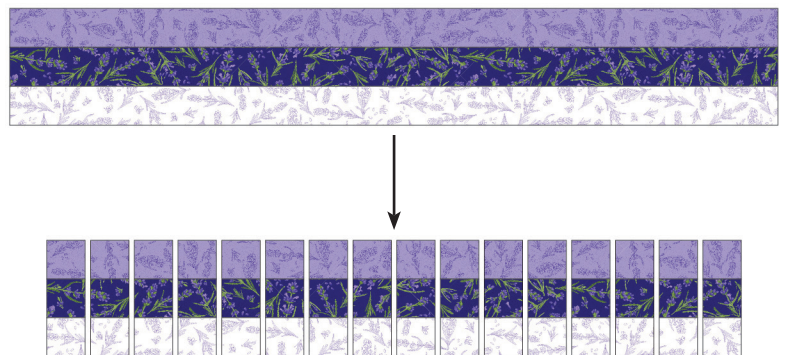


Step 3: Repeat the process from Step 1, this time sewing one Fabric C square to the corner of a Fabric E side setting triangle. Repeat to make twenty-two units like this.

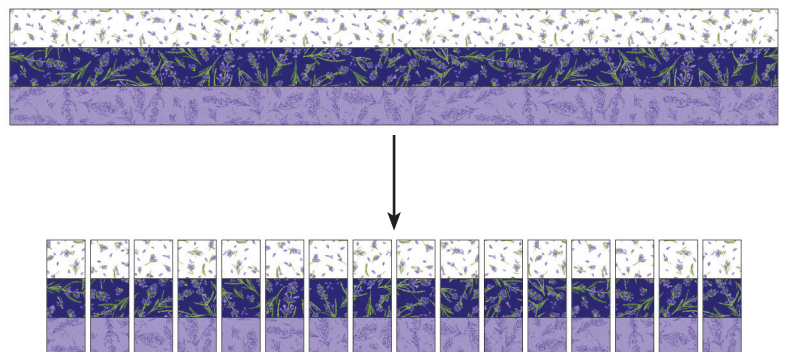


Assemble the Nine Patch Units

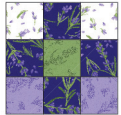
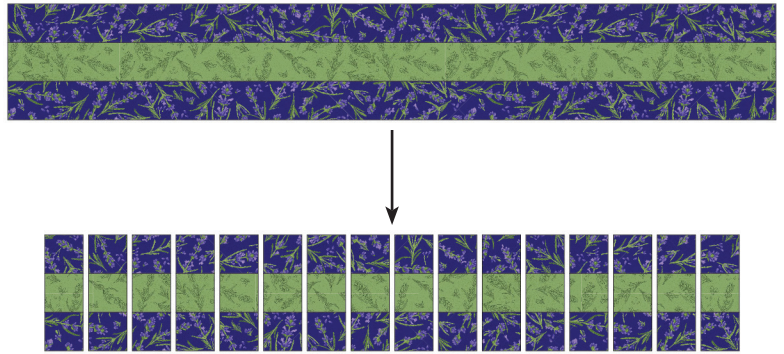
Step 4: Assemble a Strip Set in this order: Fabric C + Fabric D + Fabric A. Press. Subcut the strip set into sixteen 2-1/2" x 6-1/2" units. Using the single 2-1/2" squares of Fabrics C, D and A, make two more units. Press. You will have a total of eighteen units like this.



Step 5: Assemble two Strip Sets in this order: Fabric E + Fabric D + Fabric C. Press. Subcut the strip sets into twenty-six 2-1/2" x 6-1/2" units.



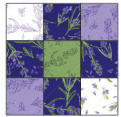
Step 6: Assemble two Strip Sets in this order: Fabric D + Fabric F + Fabric D. Press. Subcut the strip sets into twenty-two 2-1/2" x 6-1/2" units.



Step 7: Gather:

two Step 5 units
one Step 6 unit

Sew together to form a 6-1/2" square Nine Patch Block. Press. Repeat to make a total of four like this.

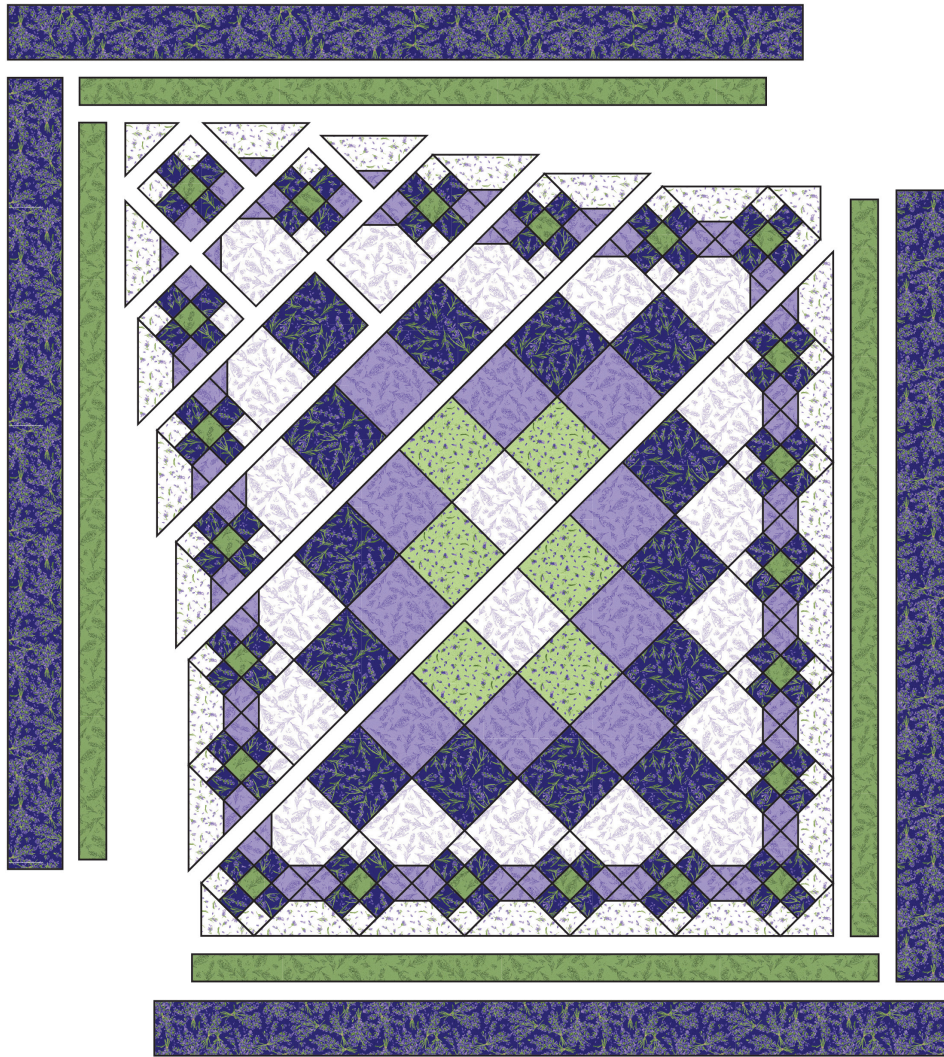


Step 8: Gather:

one Step 4 unit
one Step 6 unit
one Step 5 unit

Sew together to form a 6-1/2" square Nine Patch Block. Press. Repeat to make a total of eighteen like this.

Assemble the Quilt



Step 9: Arrange the blocks, squares and triangle units into twelve diagonal rows. Note the fabric placement and block orientation in the Quilt Assembly Diagram.

Step 10: Sew the units together to form rows. Press the rows to the left in the odd numbered rows and to the right in the even numbered rows.

Step 11: Sew the rows together to form the quilt center. Press the row seams open. Sew the Fabric E corner setting triangles to the quilt. Press.

Step 12: Sew the side inner borders to the sides of the quilt center. Press toward the borders. Sew the top and bottom inner borders to the quilt center. Press toward the borders.

Step 13: Sew the side outer borders to the sides of the quilt center. Press toward the borders. Sew the top and bottom outer borders to the quilt center. Press toward the borders.

Your quilt top is complete. Baste, quilt, bind and enjoy!

This pattern may be used for personal purposes only and may not be reproduced in any form without the express permission from Robert Kaufman Fabrics. This pattern is not for resale. All patterns, unless otherwise attributed, are © Robert Kaufman Co., Inc. 2005-2022. All rights reserved.