

LAKE VIEWS

Designed by Ariga Wilsonfor RK
www.robertkaufman.com

Featuring **Peacock Garden** STUDIO RK



Finished quilt measures: 40" x 56"
Quilt shown in "PEACOCK" colorstory.
For alternate "SKY" colorstory see pages 5-6.

Difficulty Rating: **Beginner**

ROBERTKAUFMAN
F A B R I C S

For questions about this pattern, please email Patterns@RobertKaufman.com.

Fabric and Supplies Needed

Fabric amounts based on yardage that is 42" wide.

Color	Fabric	Name/SKU	Yardage	Color	Fabric	Name/SKU	Yardage
	A	SRKM-20664-78 PEACOCK	2/3 yard (one full panel)		E	SRKM-20671-89 OPAL	1/3 yard
	B	SRKM-20669-21 LILAC	1/4 yard		F	SRKM-20668-9 NAVY	1/4 yard
	C	SRKM-20666-6 PURPLE	1/4 yard		G	SRKM-20667-17 IRIS	1/2 yard
	D	ETJ-9864-9 NAVY	1/2 yard		Binding*	ETJ-9864-9 NAVY	3/8 yard
<p>Copyright 2022, Robert Kaufman For individual use only - Not for resale</p>				<p>You will also need: 2-2/3 yards for backing</p>			

**Also used for Fabric D*

Notes Before You Begin

- Read through all of the instructions before beginning.
- All of the seam allowances are 1/4" unless otherwise noted.
- Press seam allowances open unless otherwise noted.
- Width of fabric (WOF) is equal to at least 42" wide.
- Right sides together has been abbreviated to RST.
- Remember to measure twice and cut once!

Cutting Instructions

From Fabric A, fussy cut:

one 22-1/2" x 38-1/2" center panel

From Fabric B, cut:

four 1-1/2" x WOF strips. Subcut:

two 1-1/2" x 38-1/2" side Border 1 strips

two 1-1/2" x 24-1/2" top/bottom Border 1 strips

From Fabric C, cut:

one 5" x WOF strip. Subcut:

eight 5" squares for the HSTs

From Fabric D, cut:

three 5" x WOF strips. Subcut:

eighteen 5" squares for the HSTs

From Fabric E, cut:

two 5" x WOF strips. Subcut:

ten 5" squares for the HSTs

From Fabric F, cut:

four 1-1/2" x WOF strips. Sew together, end-to-end, then trim:

two 1-1/2" x 48-1/2" side Border 2 strips

two 1-1/2" x 34-1/2" top/bottom Border 2 strips

From Fabric G, cut:

five 3-1/2" x WOF strips. Sew together, end-to-end, then trim:

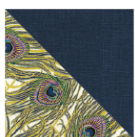
two 3-1/2" x 50-1/2" side Border 3 strips

two 3-1/2" x 40-1/2" top/bottom Border 3 strips

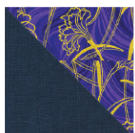
From the Binding Fabric, cut:

five 2-1/2" x WOF strips

Assemble the Half-Square Triangles (HSTs)



Step 1: Pair a 5" Fabric D square with a 5" Fabric E square, RST. Mark a diagonal line on the wrong side of one square. Sew 1/4" away from both sides of the marked line. Cut on the marked line, creating two half-square triangles (HSTs). Press toward the darker fabric. Trim to 4-1/2" square. Repeat to make twenty D/E HSTs.

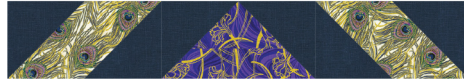


Step 2: Repeat the process in Step 1 to make sixteen C/D HSTs.

Assemble the Quilt

Step 3: Sew the side Border 1 pieces to the sides of the Fabric A quilt center. Press toward the borders. Sew the top and bottom Border 1 pieces to the Fabric A quilt center. Press toward the borders.

Step 4: Gather two C/D HSTs and four D/E HSTs. Arrange as shown in the Quilt Assembly Diagram to form the top pieced border. Sew to the top edge of the quilt center. Repeat, sewing the unit to the bottom edge of the quilt center.

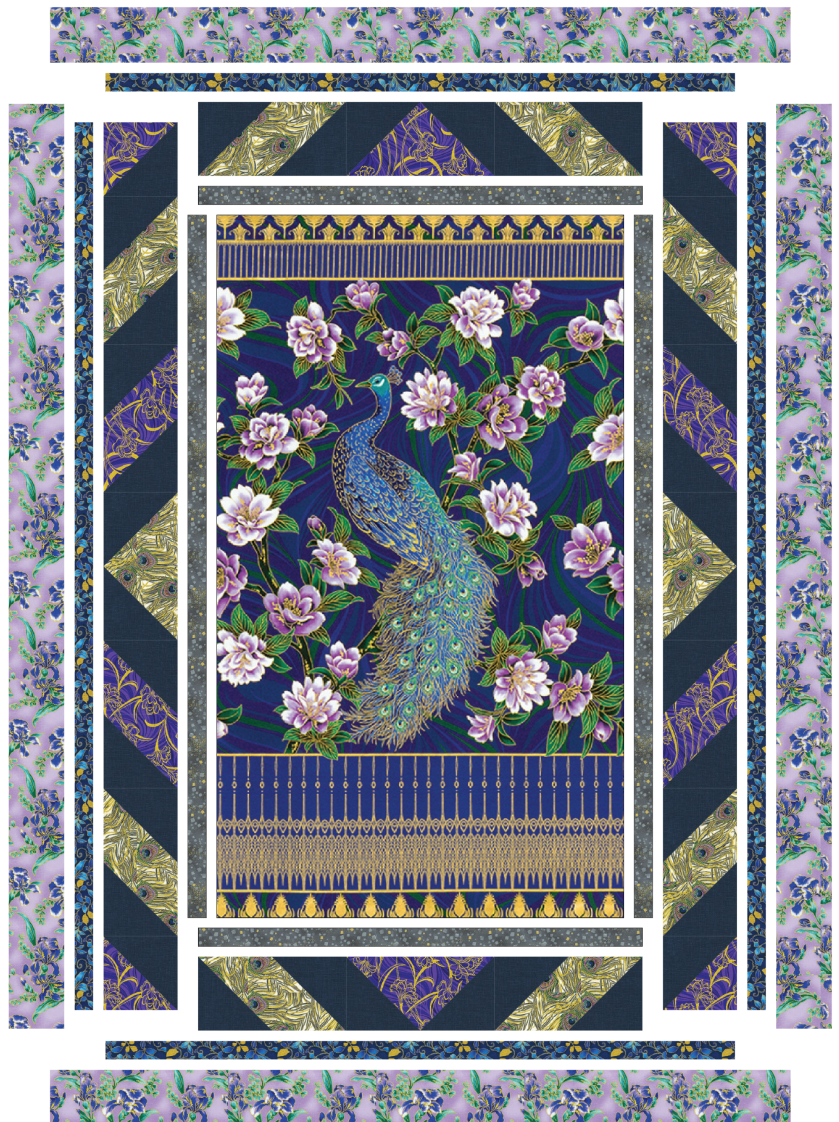


Step 5: Gather six C/D HSTs and six D/E HSTs. Arrange as shown in the Quilt Assembly Diagram to form the left pieced border. Sew to the left edge of the quilt center. Repeat, sewing the unit to the right edge of the quilt center.

Step 6: Sew the side Border 2 pieces to the sides of the quilt center. Press toward the borders. Sew the top and bottom Border 2 pieces to the quilt center. Press toward the borders.

Step 7: Sew the side Border 3 pieces to the sides of the quilt center. Press toward the borders. Sew the top and bottom Border 3 pieces to the quilt center. Press toward the borders.









Your quilt top is complete!
Baste, quilt, bind and enjoy!



LAKE VIEWS - Sky Colorstory

Fabric and Supplies Needed

Fabric amounts based on yardage that is 42" wide.

Color	Fabric	Name/SKU	Yardage	Color	Fabric	Name/SKU	Yardage
	A	SRKM-20664-63 SKY	2/3 yard (one full panel)		E	SRKM-20671-9 NAVY	1/3 yard
	B	SRKM-20668-9 NAVY	1/4 yard		F	SRKM-20670-9 NAVY	1/4 yard
	C	SRKM-20666-78 PEACOCK	1/4 yard		G	SRKM-20667-14 NATURAL	1/2 yard
	D	ETJ-9864-161 STRAW	1/2 yard		Binding	ETJ-9864-9 NAVY	3/8 yard
<p>Copyright 2022, Robert Kaufman For individual use only - Not for resale</p>				<p>You will also need: 2-2/3 yards for backing</p>			



This pattern may be used for personal purposes only and may not be reproduced in any form without the express permission from Robert Kaufman Fabrics. This pattern is not for resale. All patterns, unless otherwise attributed, are © Robert Kaufman Co., Inc. 2005-2022. All rights reserved.