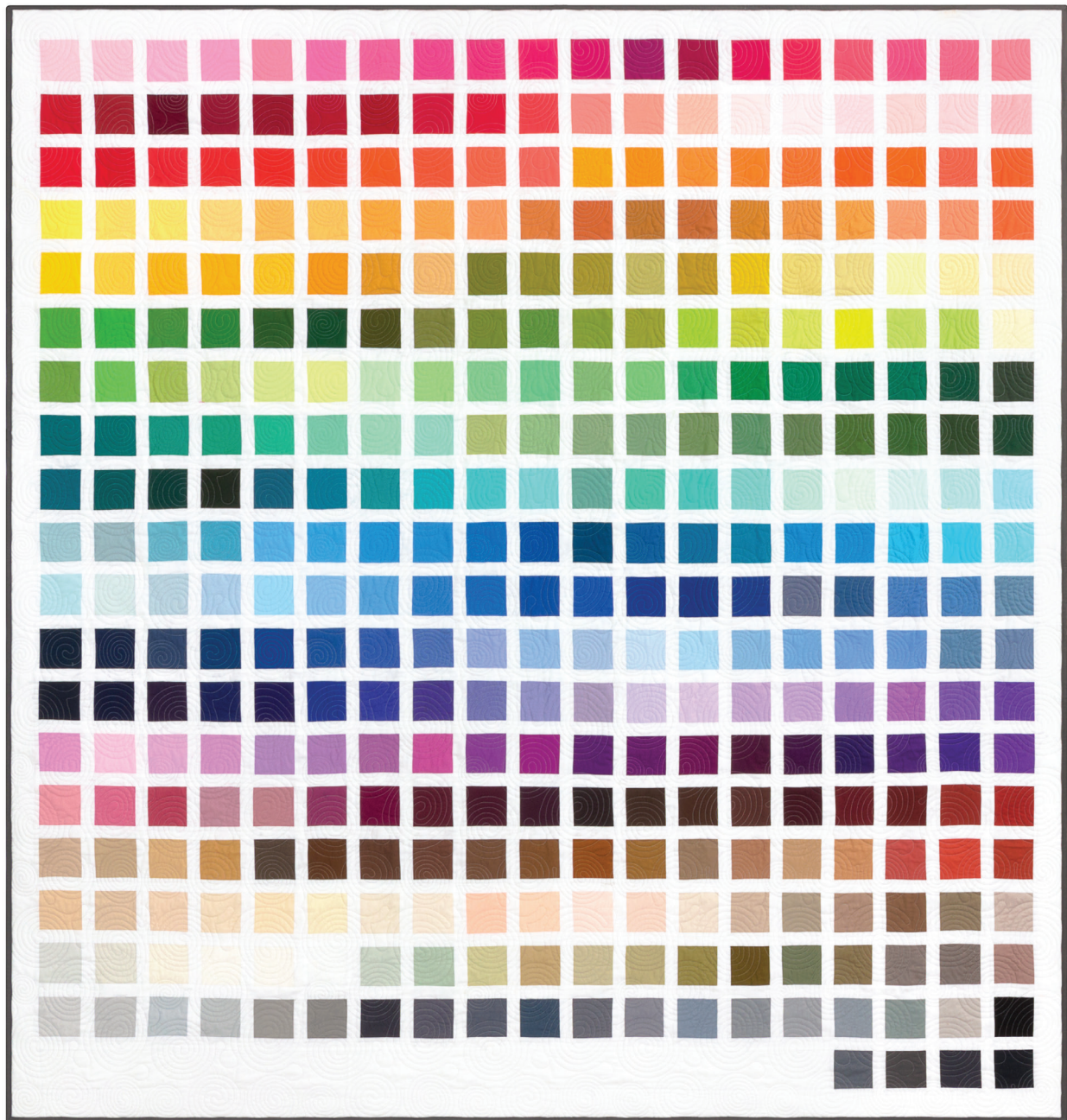


KONA COLOR CARD QUILT

Designed by Ariga Mahmoudlou for RK Featuring
www.robertkaufman.com

KONA[®]
cotton solids



Finished quilt measures: 80" x 84"

Difficulty Rating: **Intermediate**

ROBERTKAUFMAN
F A B R I C S

For questions about this pattern, please email Patterns@RobertKaufman.com.

Fabric and Supplies Needed

Fabric amounts based on yardage that is 42" wide.

Color	Fabric	Name/SKU	Yardage	Color	Fabric	Name/SKU	Yardage
	A	K001-1387 WHITE	3-3/4 yards			CHS-695-85 Neutral Colorstory	one charm pack
		CHS-851-42 New Colorstory	one charm pack			CHS-692-85 Pastel Colorway	one charm pack
		CHS-693-85 Bright Colorstory	one charm pack		Binding*	K001-1844 GRIZZLY	3/4 yard
		CHS-694-85 Dark Colorstory	one charm pack	<div>You will also need: 7-1/2 yards for backing</div>			
Copyright 2019, Robert Kaufman For individual use only - Not for resale							

Notes Before You Begin

- Read through all of the instructions before beginning.
- All of the seam allowances are 1/4" unless otherwise noted.
- Press seam allowances open unless otherwise noted.
- Width of fabric (WOF) is equal to at least 42" wide.
- Right sides together has been abbreviated to RST.
- Remember to measure twice and cut once!

Cutting Instructions

From Fabric A, cut:

two 3-1/2" x WOF strips. Sew together, end-to-end, then trim:

one 3-1/2" x 60-1/2" strip for Row 20

thirteen 3-1/2" x WOF strips. Subcut:

three hundred forty-five 1-1/2" x 3-1/2" block sashing strips

eight 3" x WOF strips. Sew together, end-to-end, then trim:

two 3" x 79-1/2" side outer borders

two 3" x 80-1/2" top/bottom outer borders

thirty-eight 1-1/2" x WOF strips. Sew together in pairs, end-to-end, then trim:

nineteen 1-1/2" x 75-1/2" row sashing strips

From each charm square**, cut:

one 3-1/2" square

** You will use 365 unique colors of charm squares.

** All charms from CHS-693-85, CHS-694-85, CHS-695-85, and CHS-692-85 will be used, but CHS-851-42 contains duplicates so those should be pulled out and set aside.

From the Binding Fabric, cut:

nine 2-1/2" x WOF strips

Assemble the Quilt

Step 1: Arrange the charm squares in twenty rows. There will be nineteen squares in each of Rows 1-19, and four squares in Row 20.

Note: The squares in the cover quilt are placed in the same order as the new Kona Cotton Color Card (with 365 swatches), starting from the top left corner of the quilt. Color placement order can be moved and changed as you prefer!

Step 2: Sew Row 1 together, placing a 1-1/2" x 3-1/2" Fabric A block sashing strip between each square. Press.

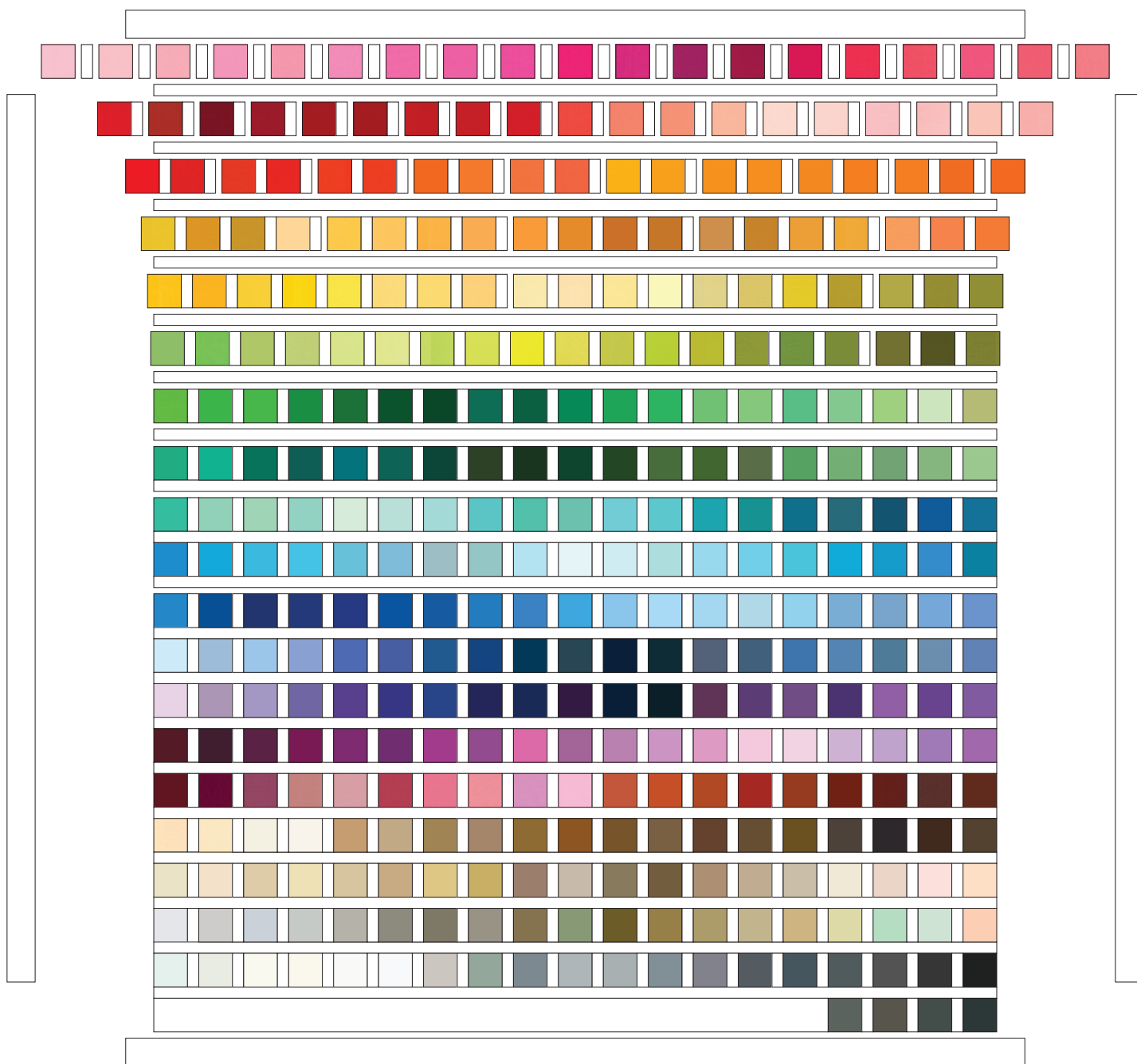


Step 3: Repeat Step 2 to assemble Rows 2-19.

Step 4: Sew Row 20 together, placing a 1-1/2" x 3-1/2" Fabric A block sashing strip between each square and the 3-1/2" x 60-1/2" Fabric A strip on the left end of the row. Press.



Step 5: Sew the 1-1/2" x 75-1/2" Fabric A sashing and block rows together, placing a sashing strip between each pieced row. Press seams open or to the sashing.



Step 6: Sew the side outer borders to the sides of the quilt center. Press toward the borders. Sew the top and bottom outer borders to the quilt center. Press toward the borders.

Your quilt top is complete! Baste, quilt, bind and enjoy!