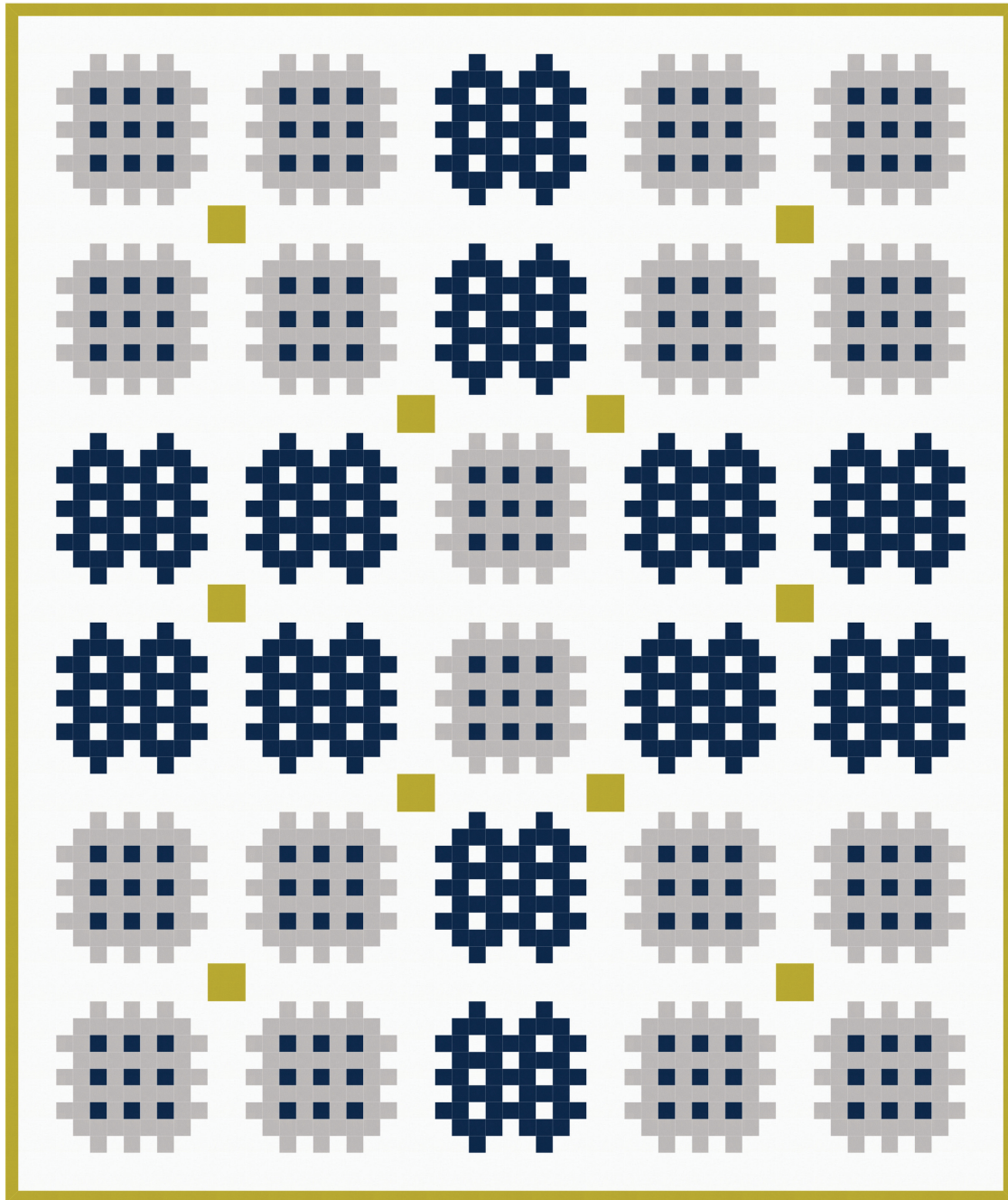


KILIM

Designed by Robert Kaufman Fabrics
www.robertkaufman.com

Featuring
KONA[®]
cotton solids



Finished quilt measures: 86" x 102"
Shown in "COOL". For alternate "WARM" colorstory see page 8.





Pattern Level: Experienced Intermediate

"I know the ropes and would like to test my skills!"

ROBERT KAUFMAN
F A B R I C S

Fabric and Supplies Needed

Fabric amounts based on yardage that is 40" wide.

Color	Fabric	Name/SKU	Yardage	Color	Fabric	Name/SKU	Yardage
	A	K001-1387 WHITE	4-1/2 yards		C	K001- 1232 MIDNIGHT	2-1/8 yards
	B	K001-1223 MEDIUM GREY	2-1/2 yards		D	K001- 480 PICKLE (includes binding)	7/8 yard
Copyright 2015, Robert Kaufman For individual use only - Not for resale				You will also need: 7-3/4 yards for backing			

Notes Before You Begin

- Read through all of the instructions before beginning.
- All of the seam allowances are 1/4" unless otherwise noted.
- Press seam allowances open unless otherwise noted.
- Width of fabric (WOF) is equal to at least 40" wide.
- Right sides together has been abbreviated to RST.
- Remember to measure twice and cut once!

Cutting Instructions

From **Fabric A**, cut:

twenty-eight 3-1/2" x WOF strips. Subcut:

- six 3-1/2" x 17"
- four 3-1/2" x 33-1/2"
- thirty-eight 3-1/2" x 14"

Sew eight strips together, end to end, then trim:

- three 3-1/2" x 47"
- two 3-1/2" x 86"

Set all of the above strips aside for sashing assembly

twenty-two 2" x WOF strips

six 3-1/2" x WOF strips

one 5" x WOF strip

Set all of the above aside for strip piecing

three 2" x WOF strips. Subcut:

- four 2" x 5"
- eight 2" x 3-1/2"

- twenty-four 2" x 2"

Set aside for patchwork piecing two Block B units

From **Fabric B**, cut:

twelve 2" x WOF strips

six 3-1/2" x WOF strips

four 11" x WOF strips

Set all of the above aside for strip piecing

From **Fabric C**, cut:

eleven 2" x WOF strips

four 3-1/2" x WOF strips

six 5" x WOF strips

Set all of the above aside for strip piecing

sixteen 2" x 5"

eight 2" x 2"

Set aside for patchwork piecing two Block B units

From **Fabric D**, cut:

one 3-1/2" x WOF strip.

- Subcut ten 3-1/2" squares. Set aside for sashing assembly.

ten 2-1/2" x WOF strips for binding

Assemble the A Blocks

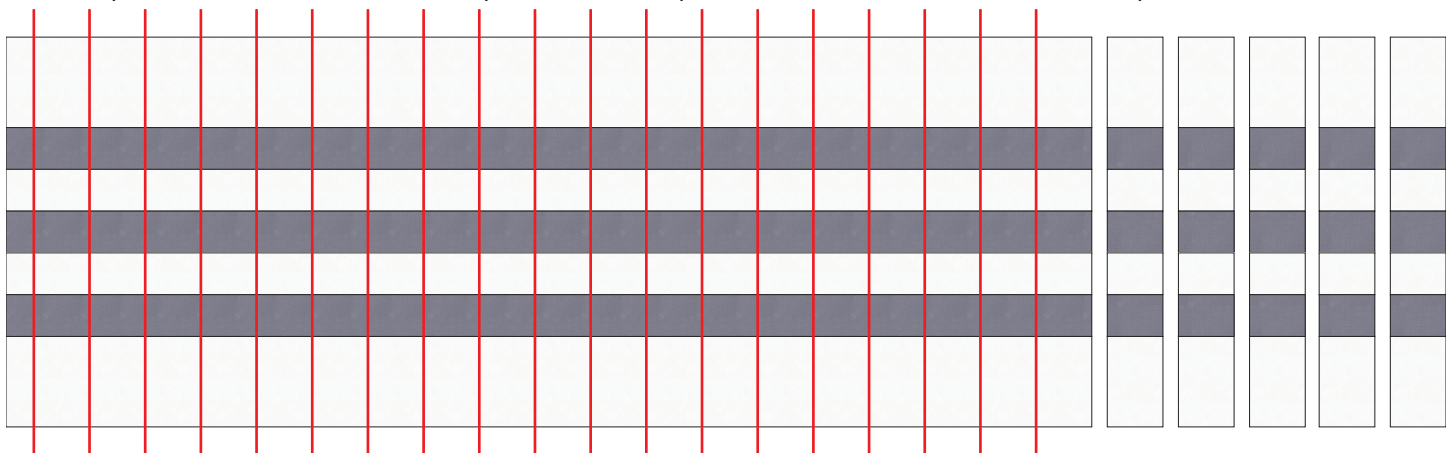
Strip piece the following pieces together, in order from left to right:

3-1/2" Fabric A + 2" Fabric B + 2" Fabric A + 2" Fabric B + 2" Fabric A + 2" Fabric B + 3-1/2" Fabric A

Press all seams to the darker fabric.

Repeat to make two strip sets.

Cut strip sets into a total of thirty-six 2" wide pieces. These will be the A Strips.



A Strip Diagram

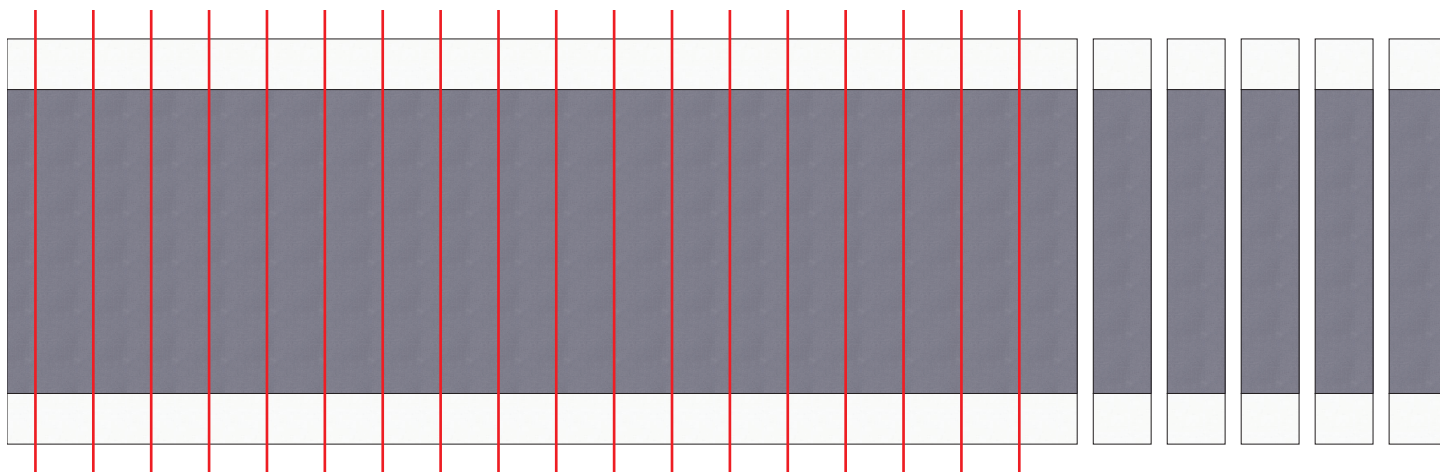
Strip piece the following pieces together, in order from left to right:

2" Fabric A + 11" Fabric B + 2" Fabric A

Press all seams to the darker fabric.

Repeat to make four strip sets.

Cut strip sets into a total of seventy-two 2" wide pieces. These will be the B Strips.



B Strip Diagram

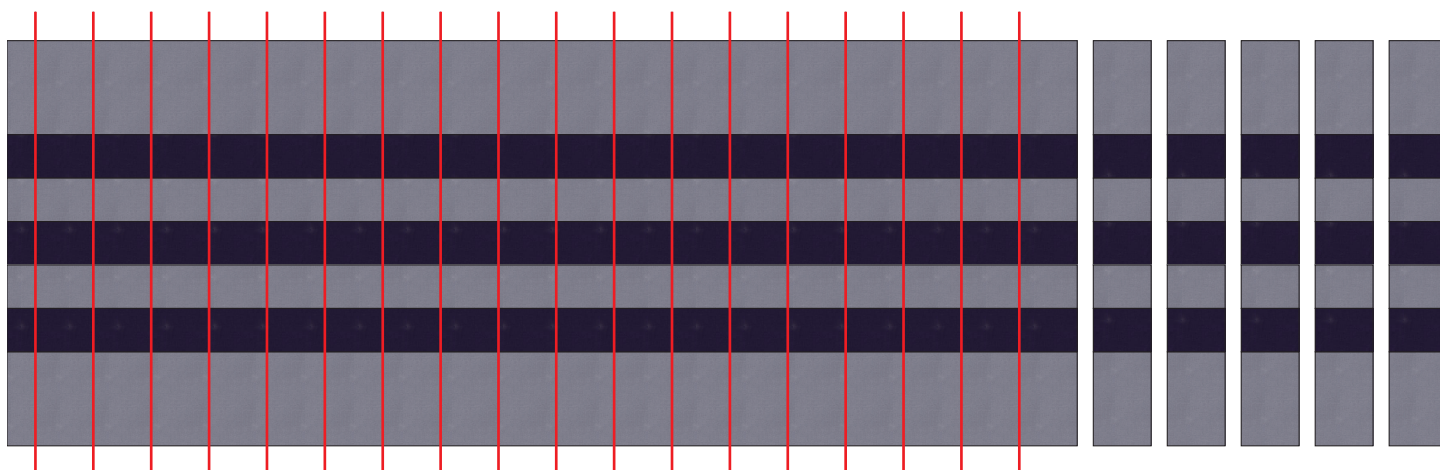
Strip piece the following pieces together, in order from left to right:

3-1/2" Fabric B + 2" Fabric C + 2" Fabric B + 2" Fabric C + 2" Fabric B + 2" Fabric C + 3-1/2" Fabric B

Press all seams to the darker fabric.

Repeat to make three strip sets.

Cut strip sets into a total of fifty-four 2" wide pieces. These will be the C Strips.



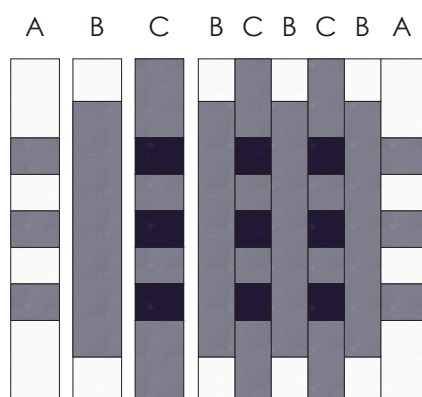
C Strip Diagram

Assemble the block by sewing strips together in the following order:

A B C B C B C B A

Press seams open.

Repeat to make a total of eighteen A Blocks.



A Block Diagram

Assemble the B Blocks

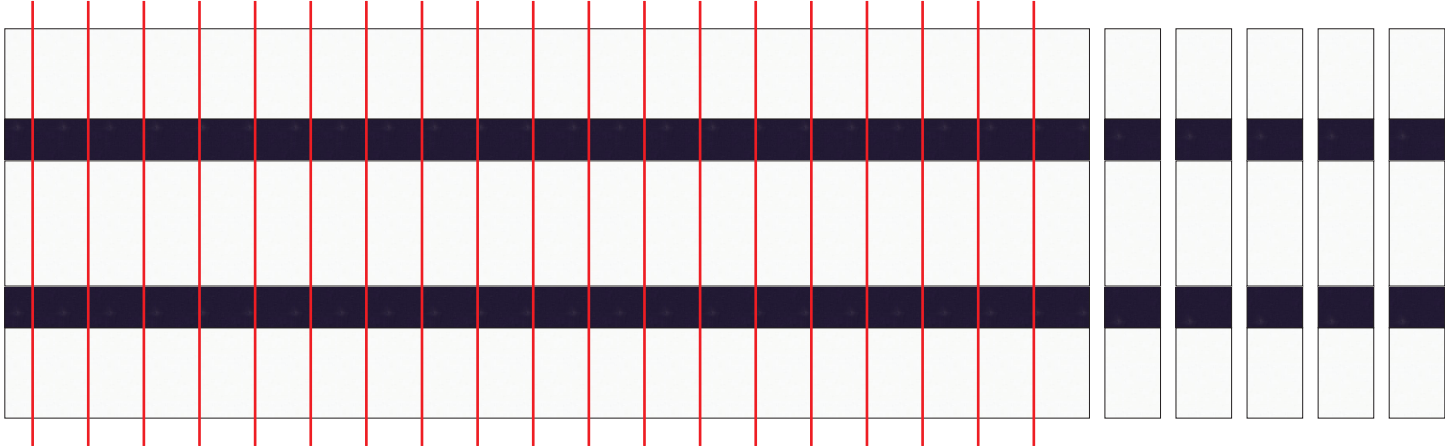
Strip piece the following pieces together, in order from left to right:

3-1/2" Fabric A + 2" Fabric C + 5" Fabric A + 2" Fabric C + 3-1/2" Fabric A

Press all seams to the darker fabric.

Make one strip set.

Cut strip sets into a total of twenty 2" wide pieces. These will be the D Strips.



D Strip Diagram

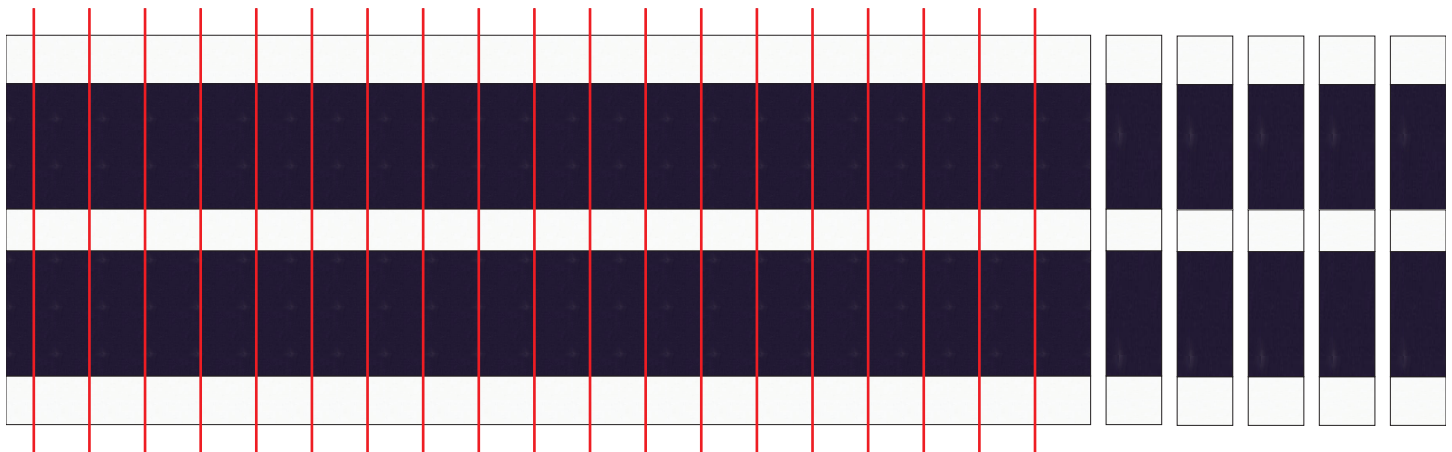
Strip piece the following pieces together, in order from left to right:

2" Fabric A + 5" Fabric C + 2" Fabric A + 5" Fabric C + 2" Fabric A

Press all seams to the darker fabric.

Repeat to make two strip sets.

Cut strip sets into a total of forty 2" wide pieces. These will be the E Strips.



E Strip Diagram

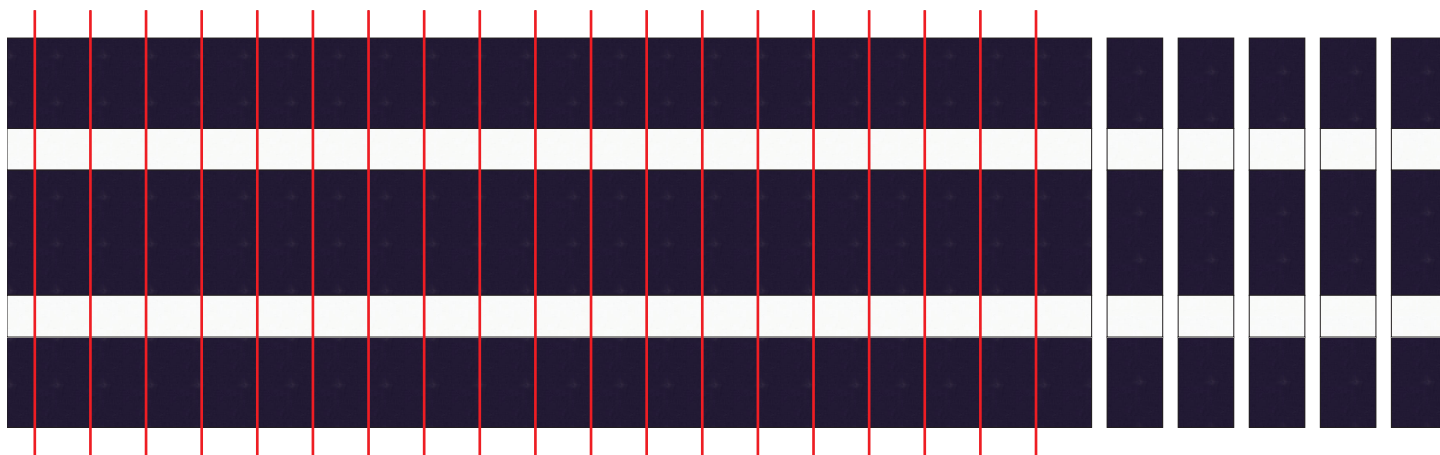
Strip piece the following pieces together, in order from left to right:

3-1/2" Fabric C + 2" Fabric A + 5" Fabric C + 2" Fabric A + 3-1/2" Fabric C

Press all seams to the darker fabric.

Repeat to make two strip sets.

Cut strip sets into a total of thirty-six 2" wide pieces. These will be the F Strips.



F Strip Diagram

To eliminate fabric waste, a few components of the B Blocks are patchwork assembled, without strip piecing. Use the Fabric A and C pieces left from the cutting instructions to create four additional D strips and eight additional E strips.



D Strip

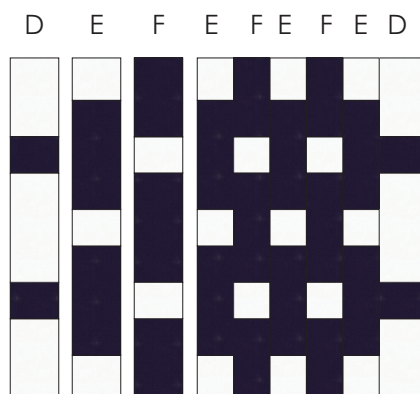


E Strip

Patchwork Pieced Strip Diagrams

Assemble the block by sewing strips together in the following order:

D E F E F E F E D



B Block Diagram

Press seams open.

Repeat to make a total of twelve B Blocks.

Add the Sashing

Sew a 3-1/2" x 13-1/2" Fabric A strip to the right edge of all A and B Blocks.

Sew another sashing strip to the left side of four A Blocks and two B Blocks. These will be the first blocks in each row.

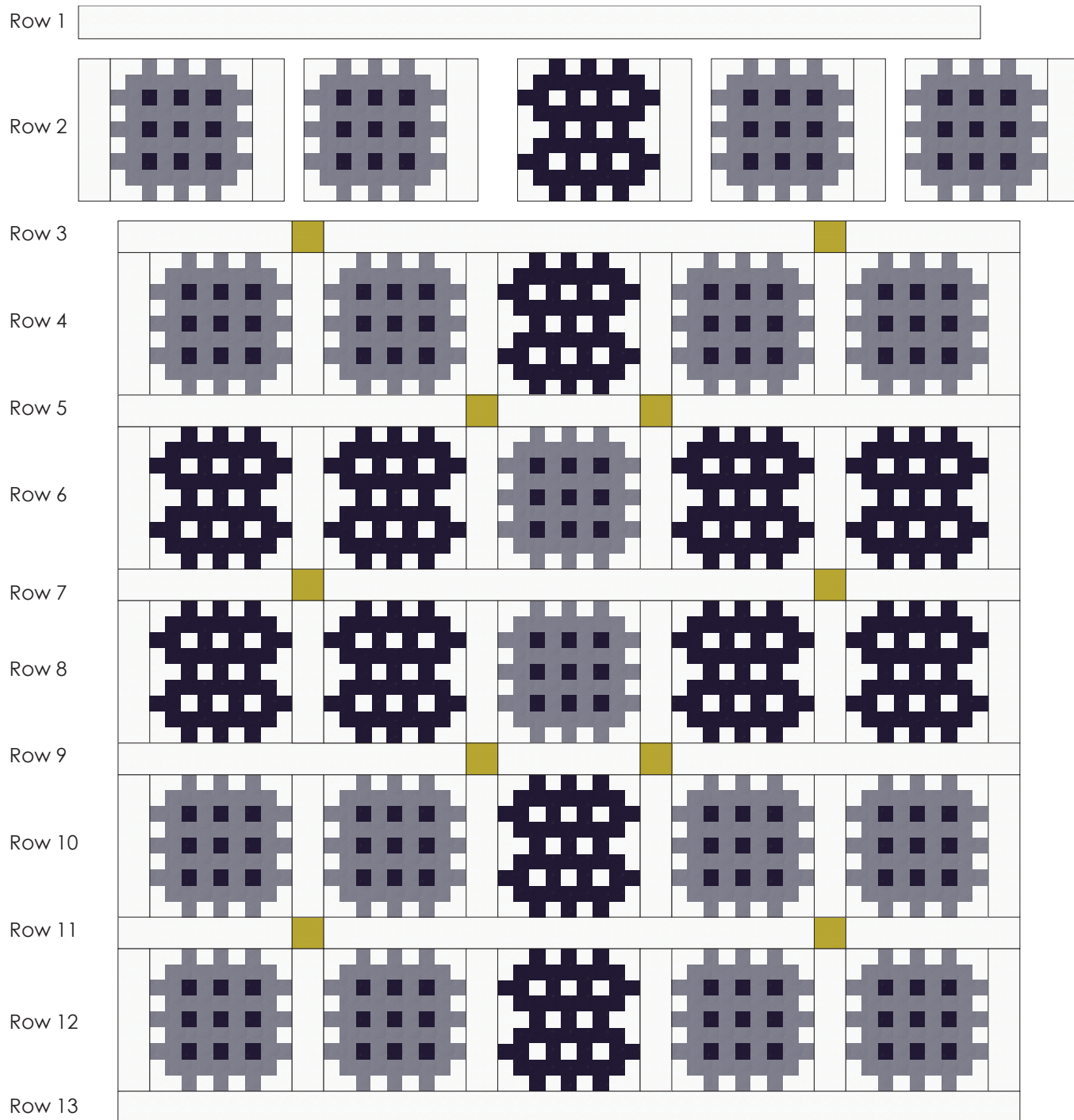
Sew Rows 2, 4, 10 and 12 together as pictured in the Quilt Assembly Diagram. Press all seams away from the sashing.

Sew Rows 6 and 8 together as pictured in the Quilt Assembly Diagram. Press all seams away from the sashing.

Rows 1 and 13: Use the sashing strip that has been trimmed to 86" long
 Rows 3, 7 and 11: Sew a 3-1/2" Fabric D square to both ends of a 3-1/2" x 47" sashing rectangle. Sew a 17" sashing strip to the remaining side of the Fabric D square.
 Rows 5 and 9: Sew a 3-1/2" Fabric D square to both ends of a 3-1/2" x 14" sashing rectangle. Sew a 33-1/2" sashing strip to the remaining side of the Fabric D square.

Press all sashing strip seams to the Fabric D squares.

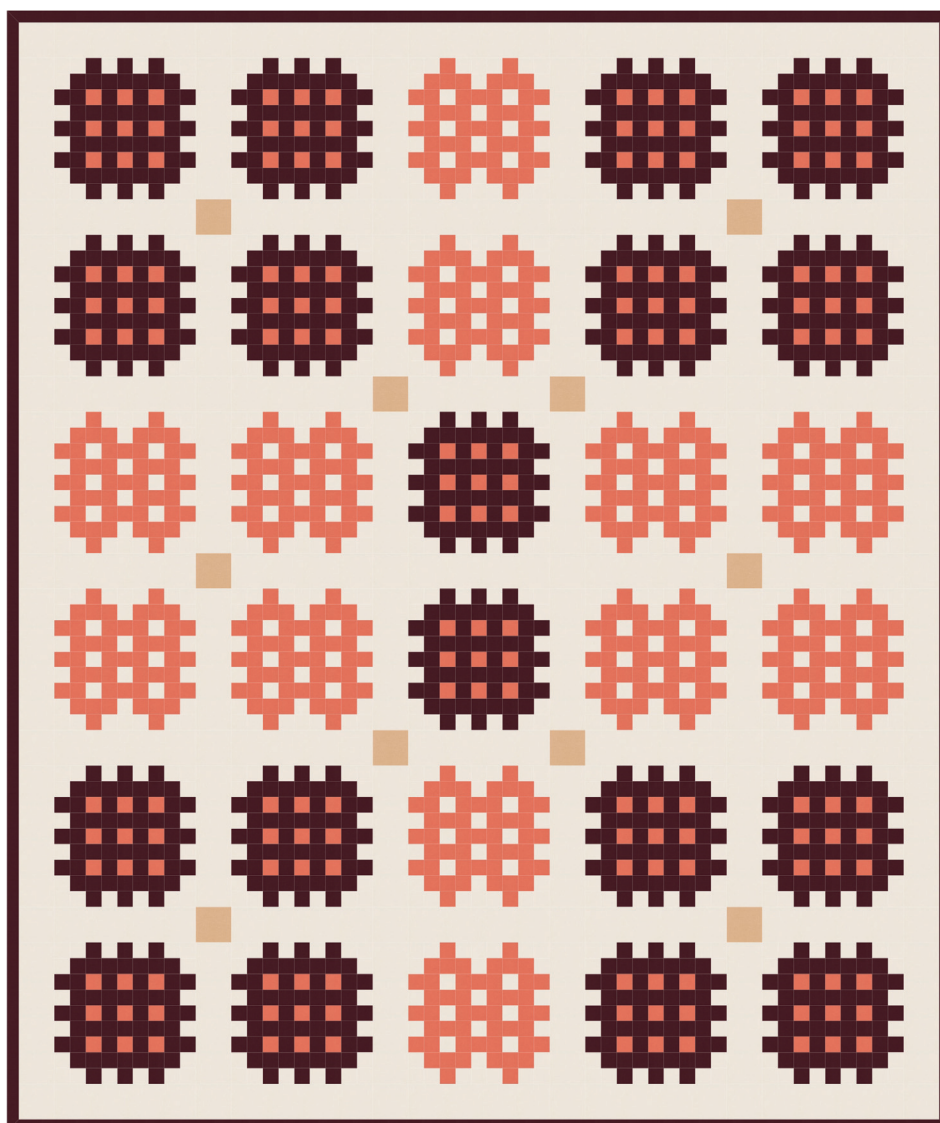
Assemble the Quilt




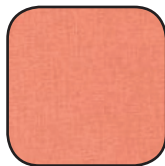


Sew Rows 1-13 together, following the Quilt Assembly Diagram. Press all seams to one side.

Your quilt top is complete. Baste, bind, quilt and enjoy!

WARM Colorstory



Fabric amounts based on yardage that is 40" wide.

Color	Fabric	Name/SKU	Yardage	Color	Fabric	Name/SKU	Yardage
	A	K001- 1242 NATURAL	4-1/2 yards		C	K001- 1483 SALMON	2-1/8 yards
	B	K001-1215 MAHOGANY	2-1/2 yards		D	K001- 1306 RAFFIA (includes binding)	7/8 yard
Copyright 2015, Robert Kaufman For individual use only - Not for resale				You will also need: 7-3/4 yards for backing			