

KATIE'S MADDER LADDER

Designed by Carrie Quinn
www.piecefulgathering.com

Featuring **KATIE'S MADDERS** c. 1860
Carrie Quinn  Pieceful Gathering Designs



Finished quilt measures: 82" x 98"


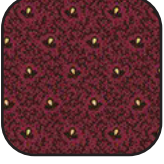
Difficulty Rating: **Intermediate**

ROBERT KAUFMAN
F A B R I C S

For questions about this pattern, please email Patterns@RobertKaufman.com.

Fabric and Supplies Needed

Fabric amounts based on yardage that is 42" wide.

Color	Fabric	Name/SKU	Yardage	Color	Fabric	Name/SKU	Yardage
	A	AZQ-19101-3 RED	1-1/2 yard		E	AZQ-19104-16 BROWN	3/4 yard
	B	AZQ-19102-13 TAN	1-1/2 yard		F	AZQ-19104-168 CINNAMON	3/4 yard
	C	AZQ-19102-179 RUST	1-1/3 yard		G	AZQ-19100-3 RED	2-3/8 yard
	D	AZQ-18125-3 RED	3/4 yard		Binding*	AZQ-18125-3 RED <small>*Also used for Fabric D</small>	3/4 yard
<p>Copyright 2020, Robert Kaufman For individual use only - Not for resale</p>				<p>You will also need: 7-1/2 yards for backing</p>			

Notes Before You Begin

- Read through all of the instructions before beginning.
- All of the seam allowances are 1/4" unless otherwise noted.
- Press seam allowances open unless otherwise noted.
- Width of fabric (WOF) is equal to at least 42" wide.
- Right sides together has been abbreviated to RST.
- Remember to measure twice and cut once!

Cutting Instructions

From each of Fabrics A and B, cut:

- five 10" x WOF strips. Subcut:
 - twenty 10" squares

From Fabric C, cut:

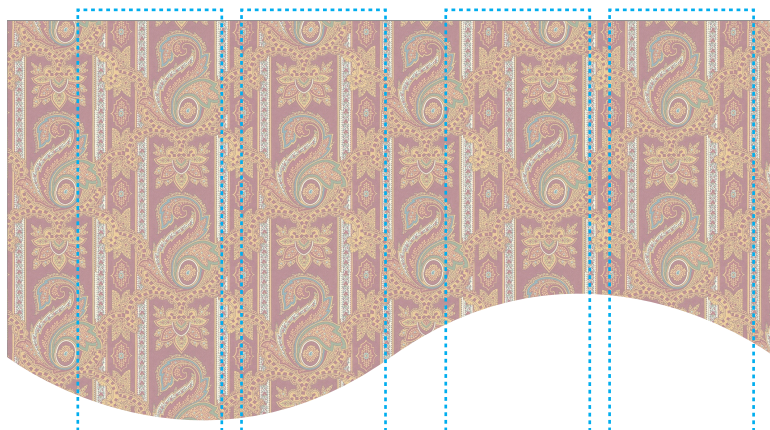
- eighteen 2-1/2" x WOF strips. Sew eight strips together, end-to-end, then set aside for the inner border.
- Set the remaining ten strips aside for the Four-Patch strip piecing.

From each of Fabrics D-F, cut:

- ten 2-1/2" x WOF strips

From Fabric G, cut:

- four length of fabric strips, using the cutting guide shown here for placing the cuts. Make cuts approximately 3/8" beyond the lines in the print. The strips will be approximately 7-1/2" wide.

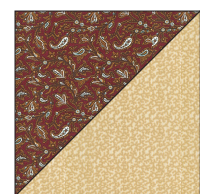
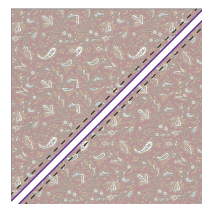


From the Binding Fabric, cut:

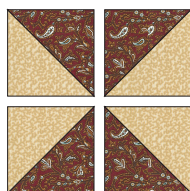
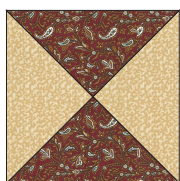
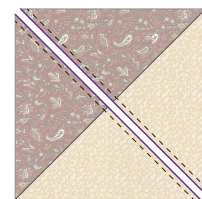
- ten 2-1/2" x WOF strips

Assemble the Half-Square Triangles (HSTs)

Step 1: Pair a Fabric A square with a Fabric B square, RST. Mark a diagonal line on the wrong side of one square. Sew 1/4" away from both sides of the marked line. Cut on the marked line, creating two half-square triangles (HSTs). Press toward the darker fabric. Repeat with all A and B squares.



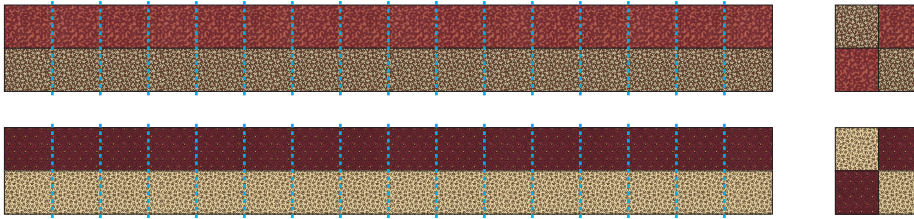
Step 2: Pair two Step 1 HSTs, RST, matching opposite fabrics together. Mark a diagonal line perpendicular to the seam line on the wrong side of one square. Sew 1/4" away from both sides of the marked line. Cut on the marked line, creating two quarter-square triangles (QSTs). Press toward the seam open or to one side. Repeat with all A/B HSTs.



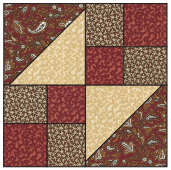
Step 3: Square up each quarter square triangle to 9" square, taking care to center the "X". Cut the square in half through both centers, creating four 4-1/2" square HST units. Repeat with all units from Step 2.

Assemble the Four-Patch Units

Step 4: Sew the 2-1/2" strips to create strip sets pairing Fabric C with Fabric E, and Fabric D with Fabric F. Subcut 2-1/2" segments. You should get at least sixteen cuts out of each set. You will need one hundred sixty segments of each color variety. Sew these together to make eighty four-patch units of each variety.



Assemble the A Blocks



Step 5: Gather:
two HSTs
two C/E four-patch units

Arrange the units into two rows of two. Note the fabric placement and block orientation in the Block Assembly Diagram.

Step 6: Sew the units together to form the rows. Press the seams toward the HSTs.

Step 7: Sew the rows together, nesting the seams and pressing the seams to one side to form the block.

The resulting Block should measure 8-1/2" squares. Make forty A Blocks.

Assemble the B Blocks



Step 8: Gather:
two HSTs
two D/F four-patch units

Arrange the units into two rows of two. Note the fabric placement and block orientation in the Block Assembly Diagram.

Step 9: Sew the units together to form the rows. Press the seams toward the HSTs.

Step 10: Sew the rows together, nesting the seams and pressing the seams to one side to form the block.

The resulting Block should measure 8-1/2" squares. Make forty B Blocks.

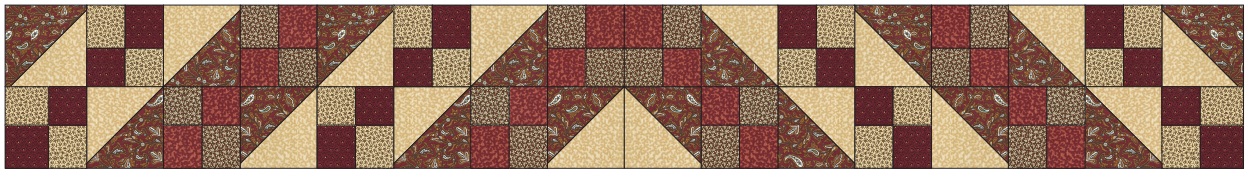
Assemble the A Rows

Step 11: Sew eight blocks together, as shown, noting the orientation of each block. Press the seams to the right. Make six rows like this.

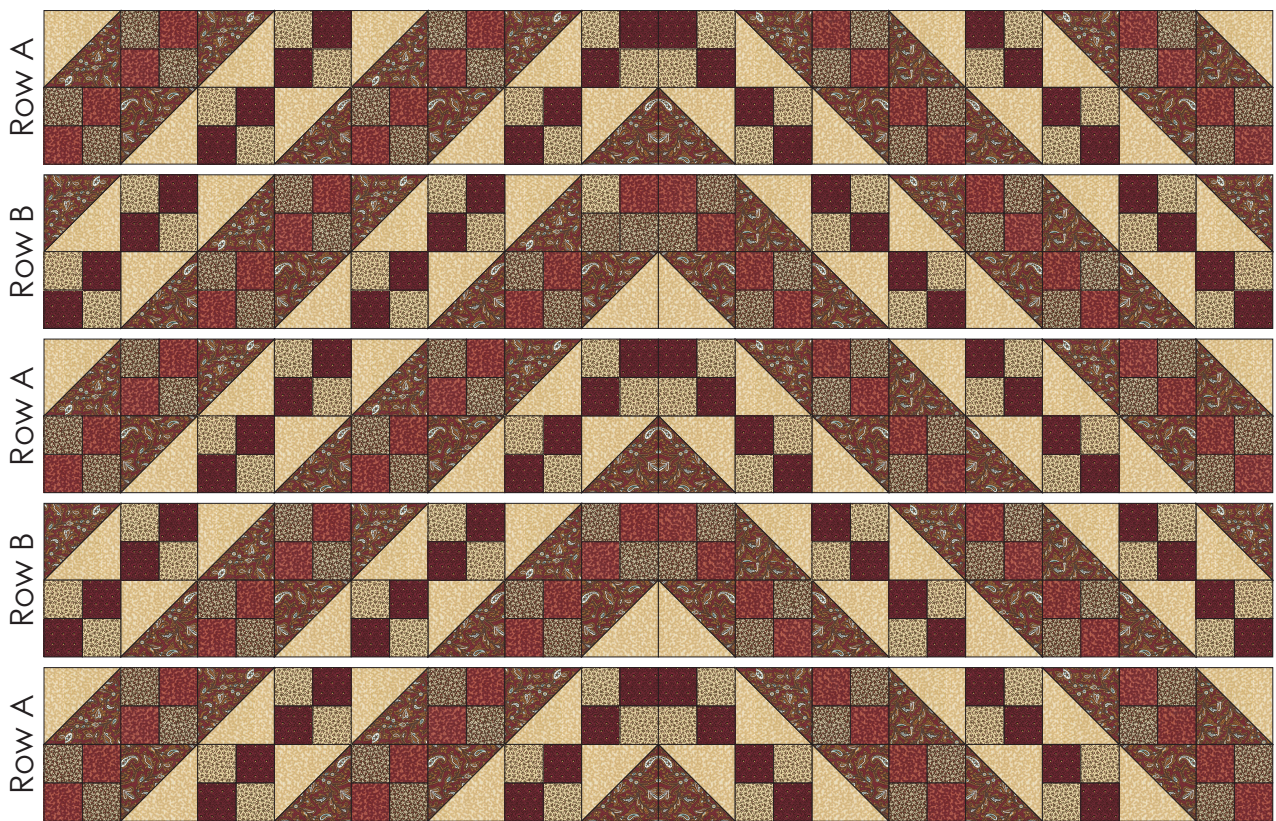


Assemble the B Rows

Step 12: Sew eight blocks together, as shown, noting the orientation of each block. Press the seams to the left. Make four rows like this.



Assemble the Quilt



Step 13: Arrange the rows as shown, noting the orientation and fabric placement. Sew the rows together to create the top half of the quilt. Repeat to make the bottom half of the quilt.

Step 14: Sew the two halves together to form the quilt. Press.

Step 15: Measure the length of the quilt through the center. Sew the Fabric C side inner borders to the sides of the quilt center. Press toward the border. Measure the width of the quilt through the center. Cut two top/bottom Fabric C border strips to this width. Sew the borders to the top and bottom of the quilt center. Press toward the border.

Step 16: Measure your quilt again. It should measure 68-1/2" x 84-1/2". If this is the case, refer to the Quilt Assembly Diagram to get the correct orientation for your border strips and trim the side strips to 84-1/2", otherwise, adjust as needed. Sew these on from the top of the quilt using a line in the pattern that you can see from the back of the fabric. See illustration:



Sewing line as seen from the back of your border strip



Step 17: Measure the width of your quilt. It should measure approximately 82-1/2", depending on how wide you cut your borders. Trim your top and bottom borders to the measured length and sew on to your quilt.

Your quilt top is complete! Baste, quilt, bind and enjoy!

This pattern may be used for personal purposes only and may not be reproduced in any form without the express permission from Robert Kaufman Fabrics. This pattern is not for resale. All patterns, unless otherwise attributed, are © Robert Kaufman Co., Inc. 2005-2020. All rights reserved.