

# AURORA

Designed by Ariga Wilson for RK  
[www.robertkaufman.com](http://www.robertkaufman.com)

Featuring *Imperial Collection* 



Finished quilt measures: 47" x 69"  
Quilt shown in Cream colorstory.  
For alternate Plum colorstory see page 6.

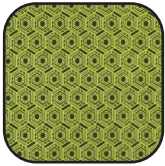
Difficulty Rating: **Beginner**

**ROBERTKAUFMAN**  
F A B R I C S

For questions about this pattern, please email [Patterns@RobertKaufman.com](mailto:Patterns@RobertKaufman.com).

## Fabric and Supplies Needed

Fabric amounts based on yardage that is 44" wide.

Color	Fabric	Name/SKU	Yardage	Color	Fabric	Name/SKU	Yardage
	A	SRKDM-23501-84 CREAM	2/3 yard (one full panel)		D	SRKM-18657-15 FOREST	1 yard
	B	SRKDM-23510-51	3/4 yard		Binding*	SRKDM-23510-51	1/2 yard <i>*Also used for Fabric B</i>
	C	SRKDM-23511-84	5/8 yard	You will also need: 3-1/8 yards for backing			

Copyright 2024, Robert Kaufman  
For individual use only - Not for resale

## Notes Before You Begin

- Read through all of the instructions before beginning.
- All of the seam allowances are 1/4" unless otherwise noted.
- Press seam allowances open unless otherwise noted.
- Width of fabric (WOF) is equal to at least 44" wide.
- Right sides together has been abbreviated to RST.
- Remember to measure twice and cut once!

## Cutting Instructions

### From Fabric A, fussy cut:

one 21-1/2" x 39-1/2" center panel

### From Fabric B, cut:

three 2-1/2" x WOF strips. Subcut:

two 2-1/2" x 21-1/2" top/bottom panel borders

two 2-1/2" x 43-1/2" side panel borders

five 3-1/2" x WOF strips. Subcut:

two 3-1/2" x 43-1/2" strips

two 3-1/2" x 29-1/2" rectangles

two 3-1/2" x 6-1/2" rectangles

four 3-1/2" x 7-1/2" rectangles

**From Fabric C, cut:**

five 3-1/2" x WOF strips. Subcut:  
 two 3-1/2" x 43-1/2" strips  
 two 3-1/2" x 28-1/2" rectangles  
 two 3-1/2" x 6-1/2" rectangles  
 four 3-1/2" x 7-1/2" rectangles

**From Fabric D, cut:**

two 7-1/2" x WOF strips. Subcut:  
 two 7-1/2" x 36-1/2" strips  
 three 4-1/2" x WOF strips. Subcut:  
 two 4-1/2" x 43-1/2" strips  
 two 4-1/2" x 6-1/2" rectangles  
 two 4-1/2" x 7-1/2" rectangles  
 three 1-1/2" x WOF strips. Subcut:  
 two 1-1/2" x 43-1/2" strips  
 two 1-1/2" x 6-1/2" rectangles  
 two 1-1/2" x 7-1/2" rectangles  
 two 1-1/2" x 3-1/2" rectangles

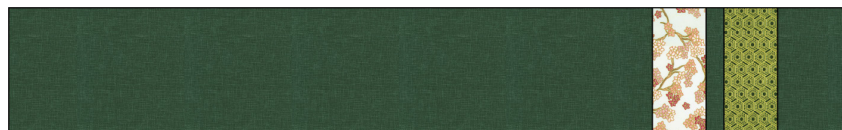
**From the Binding Fabric, cut:**

six 2-1/2" x WOF strips

## Assemble the Rows 1 and 5

**Step 1:** Sew the 7-1/2" lengths of fabric together in this order, along the 7-1/2" edge:

7-1/2" x 36-1/2" Fabric D rectangle  
 3-1/2" x 7-1/2" Fabric C rectangle  
 1-1/2" x 7-1/2" Fabric D rectangle  
 3-1/2" x 7-1/2" Fabric B rectangle  
 4-1/2" x 7-1/2" Fabric D rectangle

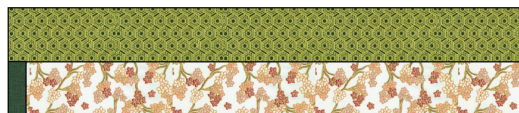


Press the seams in one unit to the left and to the right in the second unit. Repeat to make a second row like this.

## Assemble Rows 2 and 4

**Step 2:** Sew a 1-1/2" x 3-1/2" Fabric D rectangle to one end of a 3-1/2" x 28-1/2" Fabric C strip. Press. With the Fabric D end on the left, sew a 3-1/2" x 29-1/2" Fabric B strip to the top edge of the unit. Press. Repeat to make a second unit like this.

Press away from the large Fabric D rectangle. Repeat to make a row unit like this.



**Step 3:** Sew a 3-1/2" x 7-1/2" Fabric B rectangle to the top of a 3-1/2" x 7-1/2" Fabric C rectangle, along the long edge. Press. Repeat to make a second unit like this.



**Step 4:** Gather:

one 4-1/2" x 6-1/2" Fabric D rectangle  
one 3-1/2" x 6-1/2" Fabric B rectangle  
one completed Step 2 unit  
one 3-1/2" x 6-1/2" Fabric C rectangle  
one 1-1/2" x 6-1/2" Fabric D rectangle  
one completed Step 3 unit

Sew together, left to right, in the order listed. Press the seams in one unit to the left and to the right in the second unit. Repeat to make a second row like this.



### Assemble Row 3

**Step 5:** Sew the Fabric B top/ bottom panel borders to the top and bottom of the Fabric A panel. Press. Sew the Fabric B side panel borders to the left and right edges of the Fabric A panel. Press.

**Step 6:** Sew the 43-1/2" lengths of fabric together in this order, along the longest edge: 3-1/2" wide Fabric C - 1-1/2" wide Fabric D - 3-1/2" wide Fabric B - 4-1/2" wide Fabric D. Do not press the seams yet. Repeat to make a second unit like this.

**Step 7:** Sew the completed Step 6 units to the left and right of the center panel, noting the orientation in the Quilt Assembly Diagram. Press all seams to the left.



## Assemble the Quilt



**Step 8:** Sew Rows 1-5 together, noting the orientation and placing the rows so that the seams nest. Press the row seams open or to one side.






Your quilt top is complete. Baste, quilt, bind and enjoy!

# AURORA - Plum Colorstory



## Fabric and Supplies Needed

Fabric amounts based on yardage that is 44" wide.

Color	Fabric	Name/SKU	Yardage	Color	Fabric	Name/SKU	Yardage
	A	SRKDM-23501-24 PLUM	2/3 yard (one full panel)		D	K001-1133 EGGPLANT	1 yard
	B	SRKDM-23512-24	3/4 yard		Binding	SRKDM-23512-24 <i>*Also used for Fabric B</i>	1/2 yard
	C	SRKDM-23508-416	5/8 yard	You will also need: 3-1/8 yards for backing			

Copyright 2024, Robert Kaufman  
 For individual use only - Not for resale

This pattern may be used for personal purposes only and may not be reproduced in any form without the express permission from Robert Kaufman Fabrics. This pattern is not for resale. All patterns, unless otherwise attributed, are © Robert Kaufman Co., Inc. 2005-2019. All rights reserved.