

ICE BOX

Designed by Ariga Wilson for RK
www.robertkaufman.com

Featuring *Wishwell*

Florista

Vanessa Lillrose & Linda Fitch



Finished quilt measures: 51" x 68"

Difficulty Rating: **Intermediate**

ROBERTKAUFMAN
F A B R I C S

For questions about this pattern, please email Patterns@RobertKaufman.com.

Fabric and Supplies Needed

Fabric amounts based on yardage that is 42" wide.

Color	Fabric	Name/SKU	Yardage	Color	Fabric	Name/SKU	Yardage
	A	WELD-21516-82 BLUE JAY	2-3/4 yards		E	WELD-21511-472 DAHLIA	3/4 yard
	B	WELD-21516-301 AZALEA	5/8 yard		F	WELD-21513-17 IRIS	5/8 yard
	C	WELD-21510-471 LARKSPUR	1/4 yard		Binding	K001-454 PRUSSIAN	5/8 yard
	D	WELD-21512-97 ROSE	1/4 yard	<div>You will also need: 3-1/3 yards for backing</div>			
Copyright 2022, Robert Kaufman For individual use only - Not for resale							

Notes Before You Begin

- Read through all of the instructions before beginning.
- All of the seam allowances are 1/4" unless otherwise noted.
- Press seam allowances open unless otherwise noted.
- Width of fabric (WOF) is equal to at least 42" wide.
- Right sides together has been abbreviated to RST.
- Remember to measure twice and cut once!

From Fabric A, cut:

three 4" x WOF strips. Subcut:
twenty-four 4" squares for the large HSTs
one 3-1/2" x WOF strip. Subcut:
twelve 3-1/2" squares
fourteen 3" x WOF strips. Subcut:
one hundred ninety-two 3" squares for the small HSTs
fifteen 2-1/2" x WOF strips. Subcut:
forty-eight 2-1/2" x 5-1/2" rectangles
ninety-six 2-1/2" squares
forty-eight 1-1/2" x 2-1/2" rectangles

From Fabric B, cut:

one 4" x WOF strip. Subcut:
six 4" squares for the large HSTs
one 3-1/2" x WOF strip. Subcut:
twelve 3-1/2" squares
four 3" x WOF strips. Subcut:
forty-eight 3" squares for the small HSTs

From Fabric C, cut:

one 4" x WOF strip. Subcut:
six 4" squares for the large HSTs
one 3-1/2" x WOF strip. Subcut:
twelve 3-1/2" squares

From Fabric D, cut:

one 4" x WOF strip. Subcut:
six 4" squares for the large HSTs
one 3-1/2" x WOF strip. Subcut:
twelve 3-1/2" squares

From Fabric E, cut:

one 4" x WOF strip. Subcut:
six 4" squares for the large HSTs
one 3-1/2" x WOF strip. Subcut:
twelve 3-1/2" squares
six 3" x WOF strips. Subcut:
seventy-two 3" squares for the small HSTs

From Fabric F, cut:

six 3" x WOF strips. Subcut:
seventy-two 3" squares for the small HSTs

From the Binding Fabric, cut:

seven 2-1/2" x WOF strips

Assemble the Half-Square Triangles (HSTs)

Step 1: Pair a 4" Fabric A square with a 4" Fabric B square, RST. Mark a diagonal line on the wrong side of one square. Sew 1/4" away from both sides of the marked line. Cut on the marked line, creating two half-square triangles (HSTs). Press toward the darker fabric. Trim to 3-1/2" square. Repeat to make twelve A/B HSTs.



Step 2: Repeat Step 1 to make:



twelve A/C HSTs

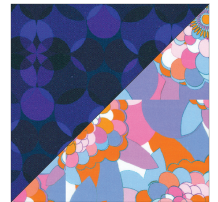


twelve A/D HSTs

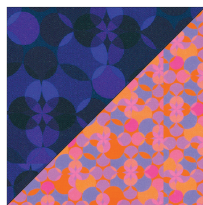


twelve A/E HSTs

Step 3: Pair a 3" Fabric A square with a 3" Fabric E square, RST. Mark a diagonal line on the wrong side of one square. Sew 1/4" away from both sides of the marked line. Cut on the marked line, creating two half-square triangles (HSTs). Press toward the darker fabric. Trim to 2-1/2" square. Repeat to make one hundred forty-four A/E HSTs.



Step 4: Repeat Step 3 to make:

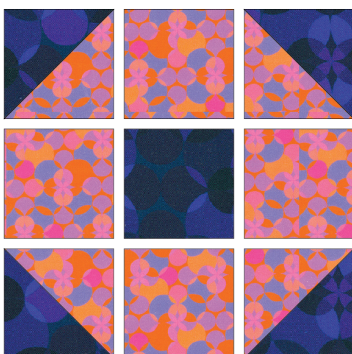


ninety-six A/B HSTs



one hundred forty-four A/F HSTs

Assemble the Blocks



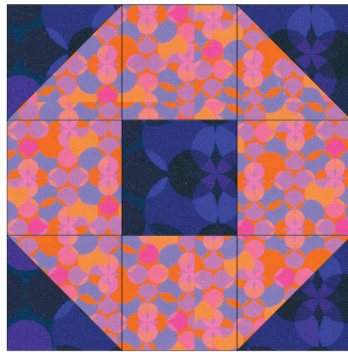
Step 5: Gather:
four large A/B HSTs
one 3-1/2" Fabric A square
four 3-1/2" Fabric B squares

Arrange the units into three rows of three. Note the fabric placement and block orientation in the Block Assembly Diagram.

Step 6: Sew the squares together to form the rows. Press the seams away from the HSTs.

Step 7: Sew the rows together, nesting the seams and pressing the seams to one side to form the block. The resulting unit should measure 9-1/2" square.

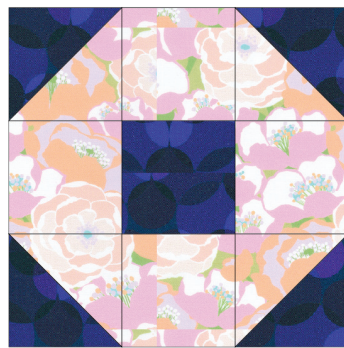
Repeat Steps 5-7 to make:



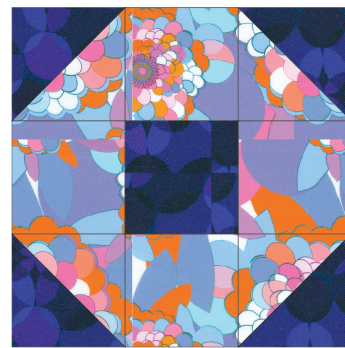
three from Fabric B



three from Fabric C



three from Fabric D



three from Fabric E

Step 8: Gather:

four small A/E HSTs

two small A/F HSTs

one 2-1/2" x 1-1/2" Fabric A rectangle

one 2-1/2" x 5-1/2" Fabric A rectangle

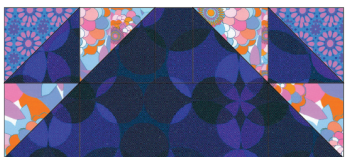


Arrange the units into two rows. Note the fabric placement and block orientation in the Block Assembly Diagram.

Step 9: Sew the units together to form the rows. Press the seams in opposite directions in each row.

Step 10: Sew the rows together, nesting the seams and pressing the seams to one side to form the unit. The resulting unit should measure 5-1/2" x 9-1/2".

Repeat Steps 8-10 to make:



twenty-four from Fabric E



twenty-four from Fabric B



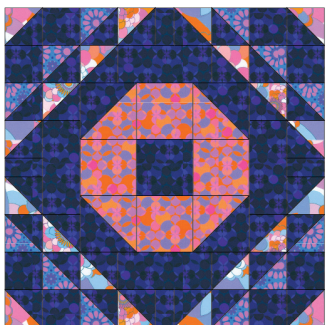
Step 11: Gather:
one small A/E HST
one small A/F HSTs
two 2-1/2" Fabric A squares

Arrange the units into two rows. Note the fabric placement and block orientation in the Block Assembly Diagram.

Step 12: Sew the units together to form the rows. Press the seams away from the HSTs.

Step 13: Sew the rows together, nesting the seams and pressing the seams to one side to form the unit. The resulting unit should measure 4-1/2" square.

Repeat Steps 11-13 to make forty-eight units.



Step 14: Gather:
one Fabric B unit from Step 7
four Fabric E units from Step 10
four four-patch units from Step 13

Arrange the units into three rows of three. Note the fabric placement and block orientation in the Block Assembly Diagram.

Step 15: Sew the units together to form the rows. Press the seams in opposite directions in each row.

Step 16: Sew the rows together, nesting the seams and pressing the seams to one side to form the Block. The resulting unit should measure 17-1/2" square.

Repeat Steps 14-16 to make the twelve Blocks for the quilt top. Refer to the Quilt Assembly Diagram for fabric pairings of the Step 7 and Step 10 units.



Step 17: Arrange the blocks into four rows of three blocks. Note the fabric placement and block orientation in the Quilt Assembly Diagram.

Step 18: Sew the blocks together to form rows. Press the rows to the left in the odd numbered rows and to the right in the even numbered rows.

Step 19: Sew the rows together to form the quilt center. Press the row seams open.

Your quilt top is complete. Baste, quilt, bind and enjoy!

This pattern may be used for personal purposes only and may not be reproduced in any form without the express permission from Robert Kaufman Fabrics. This pattern is not for resale. All patterns, unless otherwise attributed, are © Robert Kaufman Co., Inc. 2005-2022. All rights reserved.