

HUNTINGTON

Designed by Robert Kaufman Fabrics
www.robertkaufman.com

Featuring
Grand Majolica



Finished quilt measures: 85" x 85"












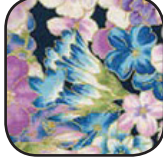

Pattern Level: Advanced Expert

*"My skills are sharp, so I'm ready to
take on the hard stuff."*

ROBERT KAUFMAN
F A B R I C S

Fabric and Supplies Needed

Fabric amounts based on yardage that is 40" wide.

Color	Fabric	Name/SKU	Yardage	Color	Fabric	Name/SKU	Yardage
	A	SRKM-15836-6 PURPLE (includes binding)	1-2/3 yards		H	SRKM-15838-192 SPRING	3/8 yard
	B	SRKM-15840-70 AQUA	3/4 yard		I	SRKM-15837-192 SPRING	1/4 yard
	C	SRKM-15835-6 PURPLE	7/8 yard		J	R044-1321 SAGE	7/8 yard
	D	SRKM-15836-9 NAVY	3/4 yard		K	SRKM-15837-9 NAVY	3/4 yard
	E	SRKM-15840-15 IVORY	1/4 yard		L	SRKM-15839-192 SPRING	1-1/4 yard
	F	SRKM-15835-213 TEAL	2-1/8 yards		M	SRKM-15838-9 NAVY	1/4 yard
	G	R044-1387 WHITE	1-1/8 yards	<p>Copyright 2016, Robert Kaufman For individual use only - Not for resale</p> <p>You will also need: 7-3/4 yards for backing</p>			

Notes Before You Begin

- Read through all of the instructions before beginning.
- All of the seam allowances are 1/4" unless otherwise noted.
- Press seam allowances open unless otherwise noted.
- Width of fabric (WOF) is equal to at least 44" wide.
- Right sides together has been abbreviated to RST.
- Remember to measure twice and cut once!

Cutting Instructions

From Fabric A, cut:

four Template 1 pieces
four Template 1-reverse pieces
sixteen Template 9 pieces
sixteen Template 9-reverse pieces
nine 2-1/2" x WOF strips for binding

From Fabric B, cut:

four 2-3/4" x WOF strips. Subcut:
 eight 2-3/4" x 20" rectangles
four Template 2 pieces
two 3-1/2" x WOF strips. Subcut:
 twenty-four 3-1/2" squares. Cut each in half once along a diagonal for paper
 piecing Block A

From Fabric C, cut:

two 3" x WOF strips. Subcut:
 four 3" x 20" rectangles
four Template 3 pieces
eight Template 8 pieces
eight Template 8-reverse pieces
thirty-two Template 11 pieces
eight Template 12 pieces
eight Template 12-reverse pieces

From Fabric D, cut:

four 3" x WOF strips. Subcut:
 eight 3" x 20" rectangles
four Template 4 pieces

From Fabric E, cut:

eight 4-1/8" squares, cut in half along one diagonal
four Template 5 pieces

From Fabric F, cut:

three 3" x WOF strips. Subcut:

sixteen 3" x 7" rectangles for paper pieced Block A

eight 1-3/4" x WOF strips. Trim to 1-3/4" x 44"

eight Template 8 pieces

eight Template 8-reverse pieces

thirty-six Template 10 pieces

forty Template 11 pieces

eight Template 13 pieces

From Fabric G, cut:

one 4" x WOF strip. Subcut:

sixteen 4" x 1-7/8" rectangles for Block A

eight 2-3/4" x WOF strips. Trim to 2-3/4" x 44"

From Fabric H, cut:

one 1-7/8" x WOF strip. Subcut:

sixteen 1-7/8" x 1-7/8" rectangles for Block A

two 2-1/2" x WOF strips. Subcut:

sixteen 2-1/2" x 3-3/4" rectangles for paper piecing Block A

From Fabric I, cut:

one 6-1/2" x WOF strip. Subcut:

four 6-1/2" x 6-1/2" squares for the Outer Border

From the remainder of the 6-1/2" strip, cut four 4" x 4" squares for Block A

From Fabric J, cut:

eight 1-3/4" x WOF strips. Trim to 1-3/4" x 44"

two 6" x WOF strips. Subcut:

eight 6" x 6" squares for the Block B

From Fabric K, cut:

four 5-1/2" x WOF strips. Trim to 5-1/2" x 44"

From Fabric L, cut:

one 6" x WOF strip. Subcut:

four 6" x 6" squares for the Block B

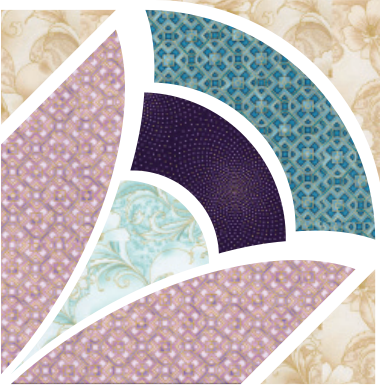
eighty Template 10 pieces

From Fabric M, cut:

one 6" x WOF strip. Subcut:

four 6" x 6" squares for the Block B

Assemble the Center Blocks



Sew the Template 2 piece to a Template 3 piece. Press to the darker fabric. Sew a Template 4 piece to the outer curve of Template 3. Press to the darker fabric. Sew a Template 5 piece to the outer curve of Template 4. <<Tip: For Templates 2-5, fold and crease at the center of each curve to aid in pinning the pieces together for sewing. Reduce stitch length for easier sewing of curves.>>

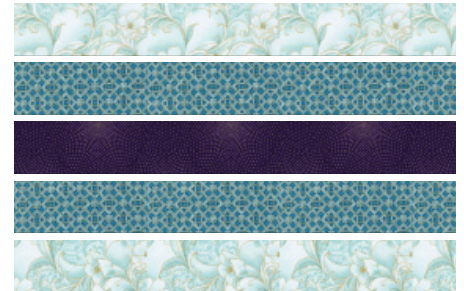
Sew a Template 1 piece to each side of the unit, matching the marked points for precise piecing. Press toward the outside of the unit. Sew a Fabric E triangle to the short straight edges of the unit. Press to the triangle piece.

Repeat to make four blocks for the center.

Arrange the four center blocks, following the orientation on the Quilt Assembly Diagram. Sew together in pairs, pressing seams in opposite directions. Sew the pairs together into two rows of two blocks, pressing the final seam open.

Assemble the Inner Border

Sew the 20" strips together along the long side in the following order, pressing all seams to the darker fabric:
Fabric B - Fabric D - Fabric C - Fabric D - Fabric B
Repeat to make four Inner Border units.



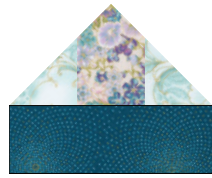
Assemble Block A



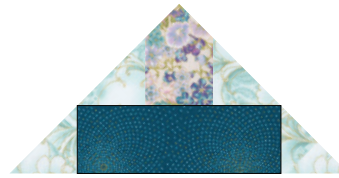
Sew a 1-7/8" x 4" Fabric G rectangle to opposite sides of a 4" Fabric I square. Press toward the rectangles. Sew a 1-7/8" Fabric H square to each end of a Fabric G rectangle. Press toward the squares. Repeat. Sew these units to the remaining side of the Fabric I square. Press toward the outside. Repeat to make four units.



Paper piece eight of Template 6 and eight of Template 7, following the number order as indicated on the template. For both templates, use Fabric H piece for #1, Fabric B for pieces #2, #3, #5 and #6 and Fabric F for piece #4. Trim all units to the outer edge of the paper piecing templates.



Finished Template 6



Finished Template 7

Sew a Template 6 unit to opposite sides of the block center. Press to the outside. Sew a Template 7 unit to each of the remaining sides. Press to the outside. Repeat to make four Block A units.



Assemble the Middle Border

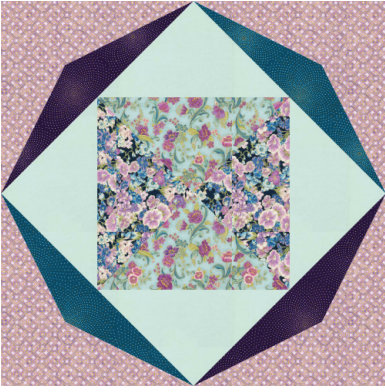
Sew the 44" strips together along the long side in the following order, pressing all seams to the darker fabric:

Fabric G - Fabric F - Fabric J - Fabric K - Fabric J - Fabric F - Fabric G

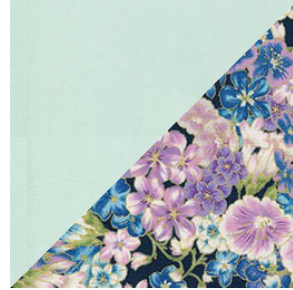
Repeat to make four Middle Border units.



Assemble Block B



Place a 6" Fabric J and Fabric M square right sides together. Mark a diagonal line from corner to corner on the wrong side of Fabric J. Sew 1/4" away on both sides of the marked line. Cut along the line. Press the seam to the darker fabric. Repeat with all remaining Fabric J/M squares and J/L squares, creating eight J/M and eight J/L half-square triangles. Trim to 5-5/8", if necessary.



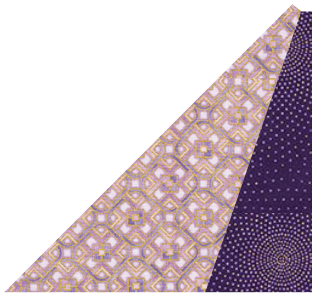
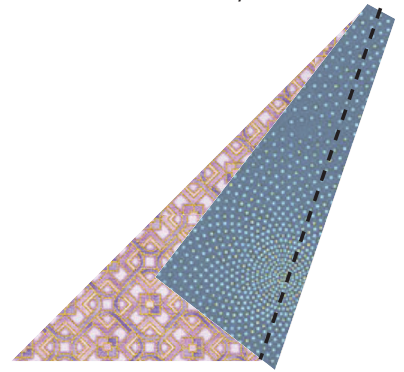
J/M



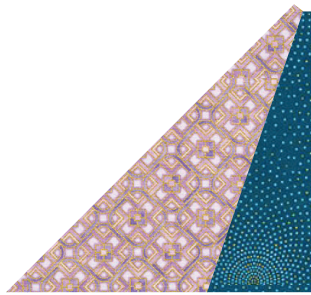
J/L

Arrange two of each type of half-square triangles as shown. Sew together in two rows of two. Press block seams in opposite directions and press row seams open. Repeat to make four Block B centers.

Sew a Template 8 piece to a Template 9 piece, as illustrated. Repeat to make sixteen units like this. Eight will be made with Fabric C and eight will be made with Fabric F. Press seams to the Template 9.

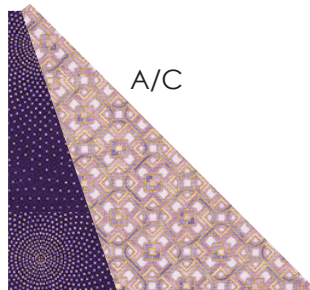


A/C

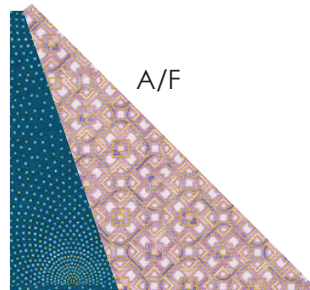


A/F

Repeat with the reverse images of Template 8 and 9, creating sixteen units. Eight of Fabric C and eight of Fabric F. Press seams to the Template 8.

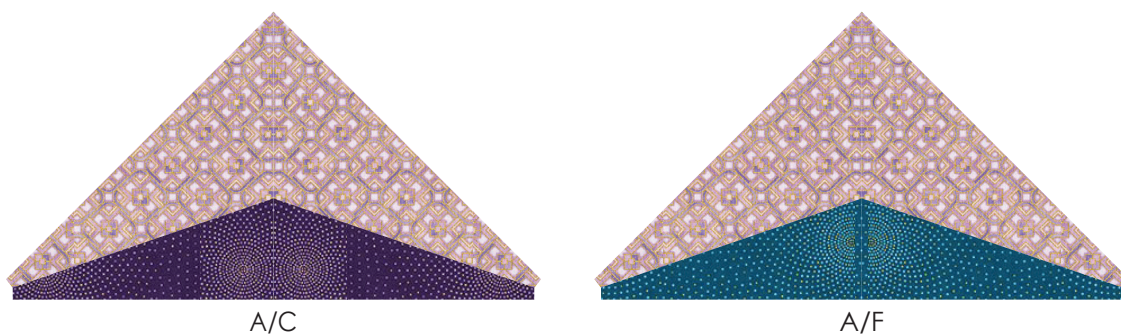


A/C



A/F

Using two Template 8/9 units made from the same fabric combination, sew together to form a large triangle. Repeat to make eight from Fabric C and eight from Fabric F. Press seams open.



Sew two Fabric C triangle units to opposite sides of the block center. Press toward the triangle unit. Sew Fabric F triangle units to the remaining sides of the block center. Press toward the triangle unit. Repeat to make four Block B units



Assemble the Outer Border

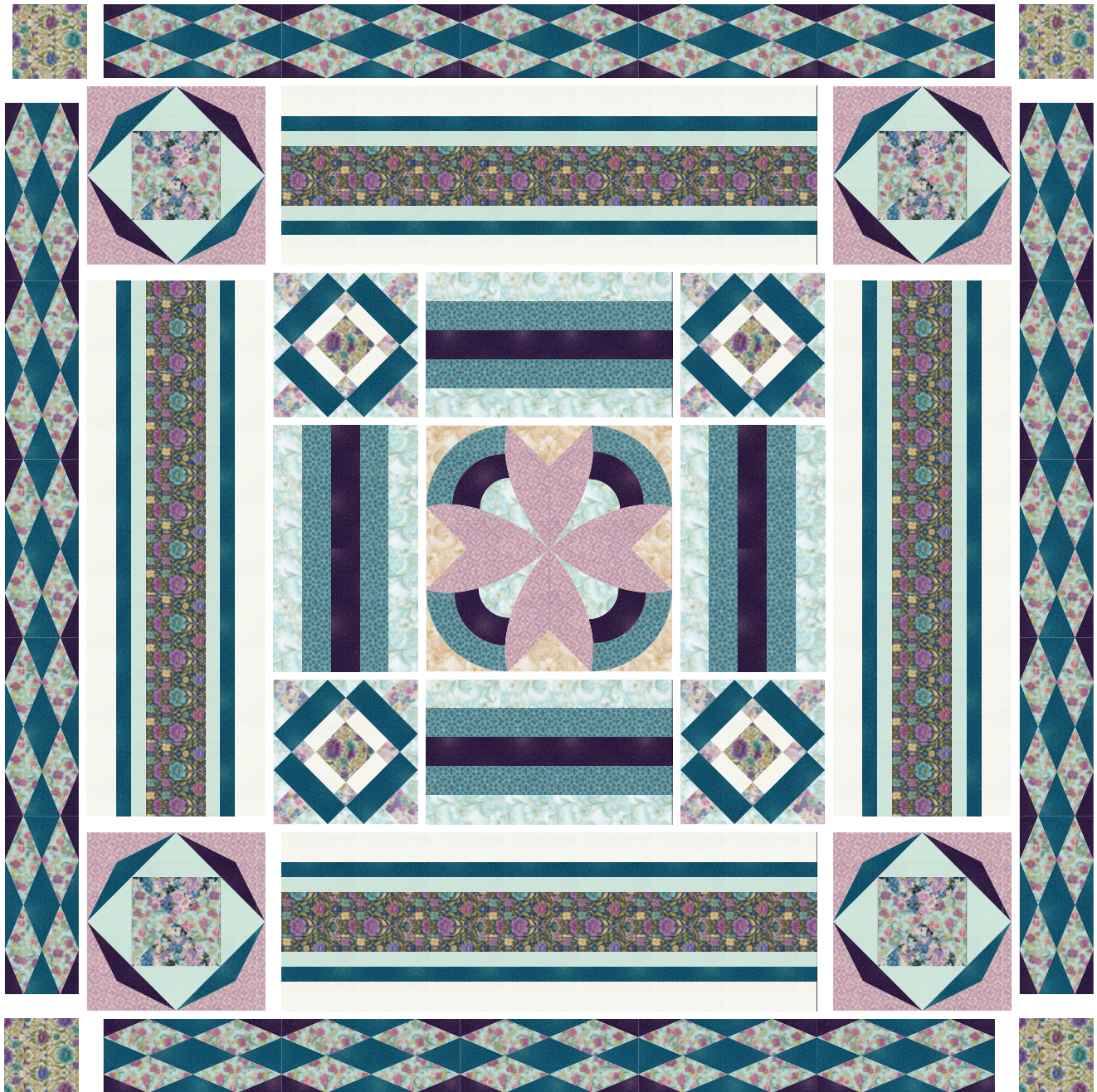


Sew the outer border pieces together in rows, as illustrated, pressing seams to the darker fabric. Sew the rows together, pressing seams open. For best accuracy, be sure to offset the seams of the template pieces and the rows so that the seams match where the 1/4" seam allowance is.



Repeat to make four Outer Border units.

Assemble the Quilt

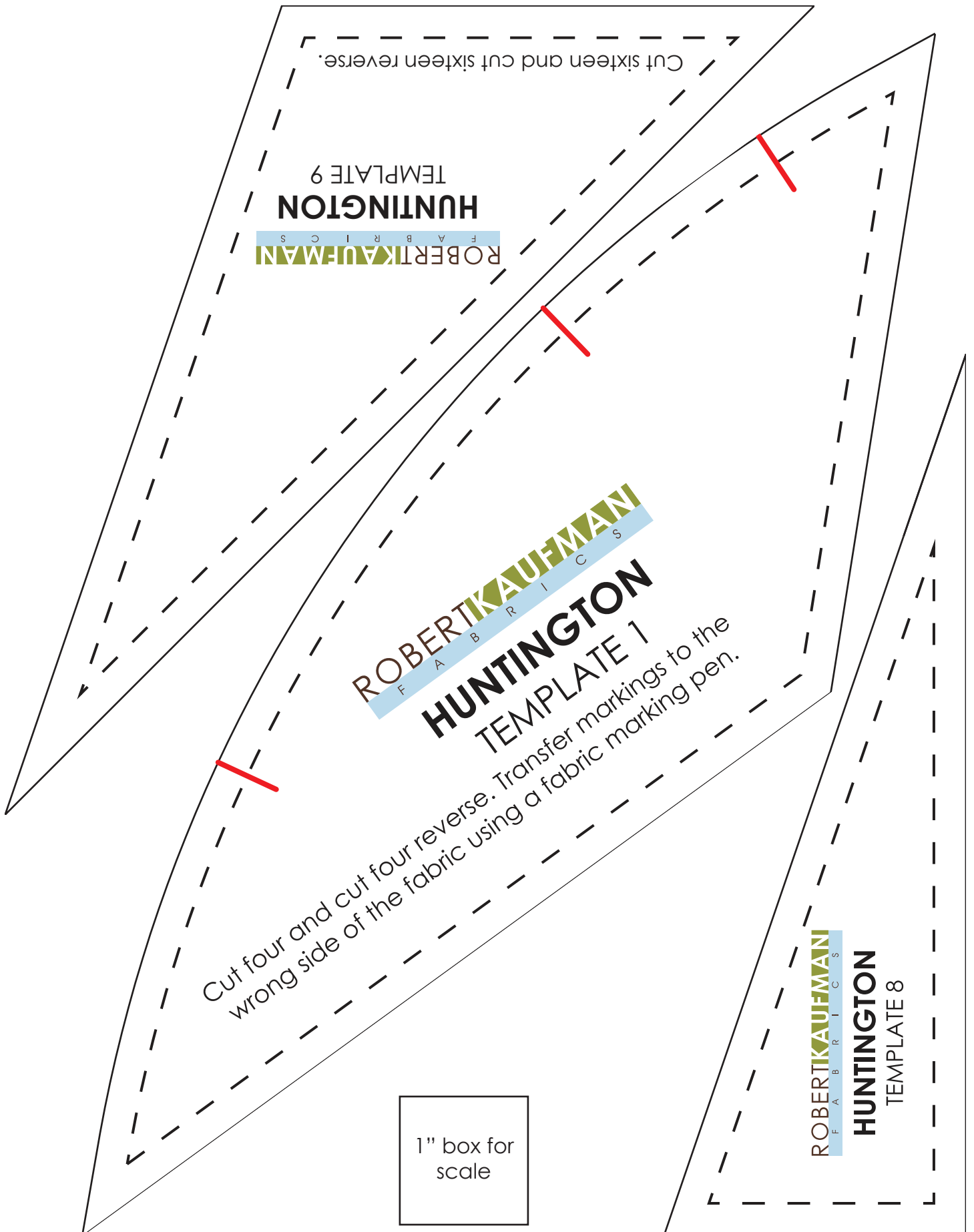


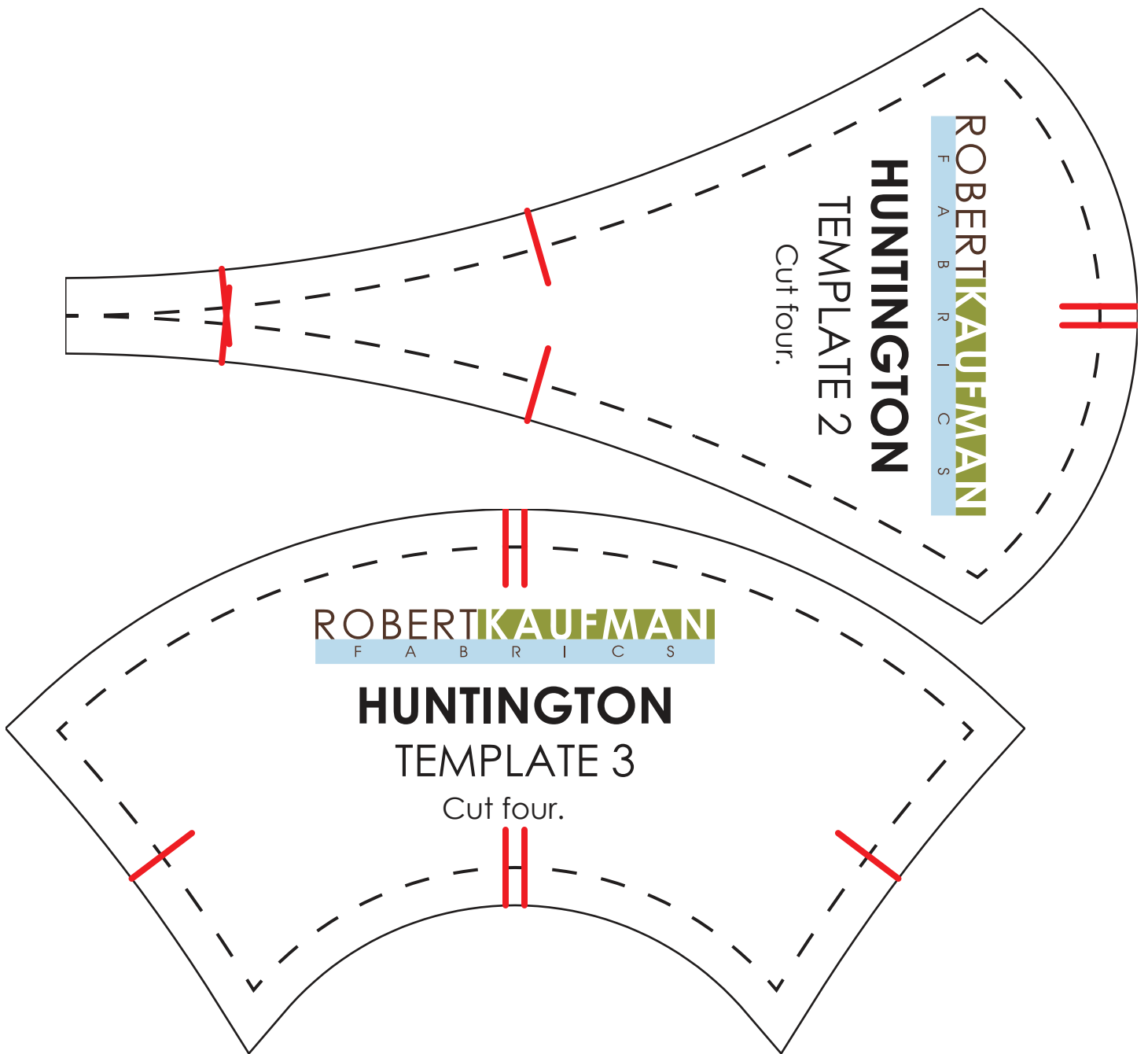
Sew two Inner Border units to opposite sides of the Center Block. Press to the borders. Sew two Block As to each end of the remaining Inner Border units. Press to the borders. Sew these units to the remaining sides of the Center Block. Press seams open.

Sew two Middle Border units to opposite sides of the quilt. Press to the borders. Sew two Block Bs to each end of the remaining Middle Border units. Press to the borders. Sew these units to the remaining sides of the quilt. Press seams open.

Sew two Outer Border units to opposite sides of the quilt. Press to the borders. Sew two 6-1/2" Fabric I squares to each end of the remaining Outer Border units. Press to the squares. Sew these units to the remaining sides of the quilt. Press seams open.

Your quilt top is now complete. Baste, quilt, bind and enjoy!





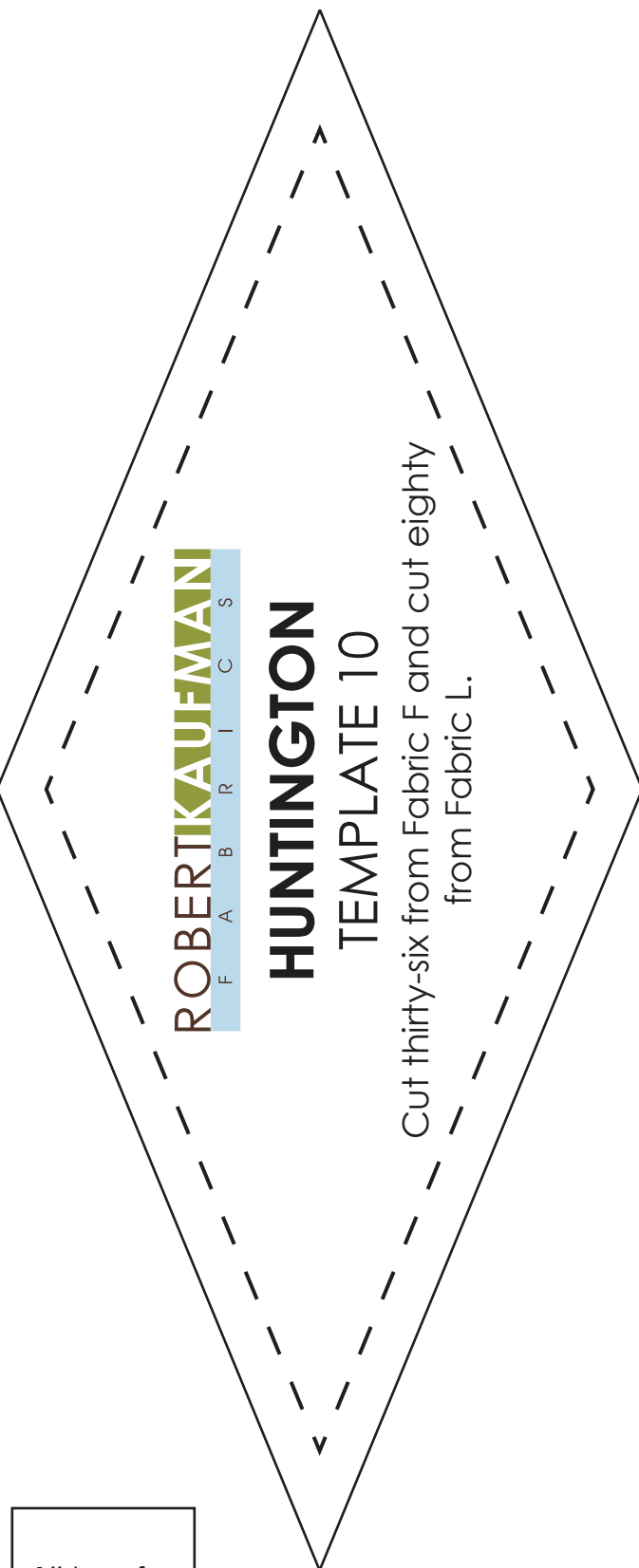
1" box for
scale



ROBERT KAUFMAN
F A B R I C S

HUNTINGTON TEMPLATE 4

Cut four.

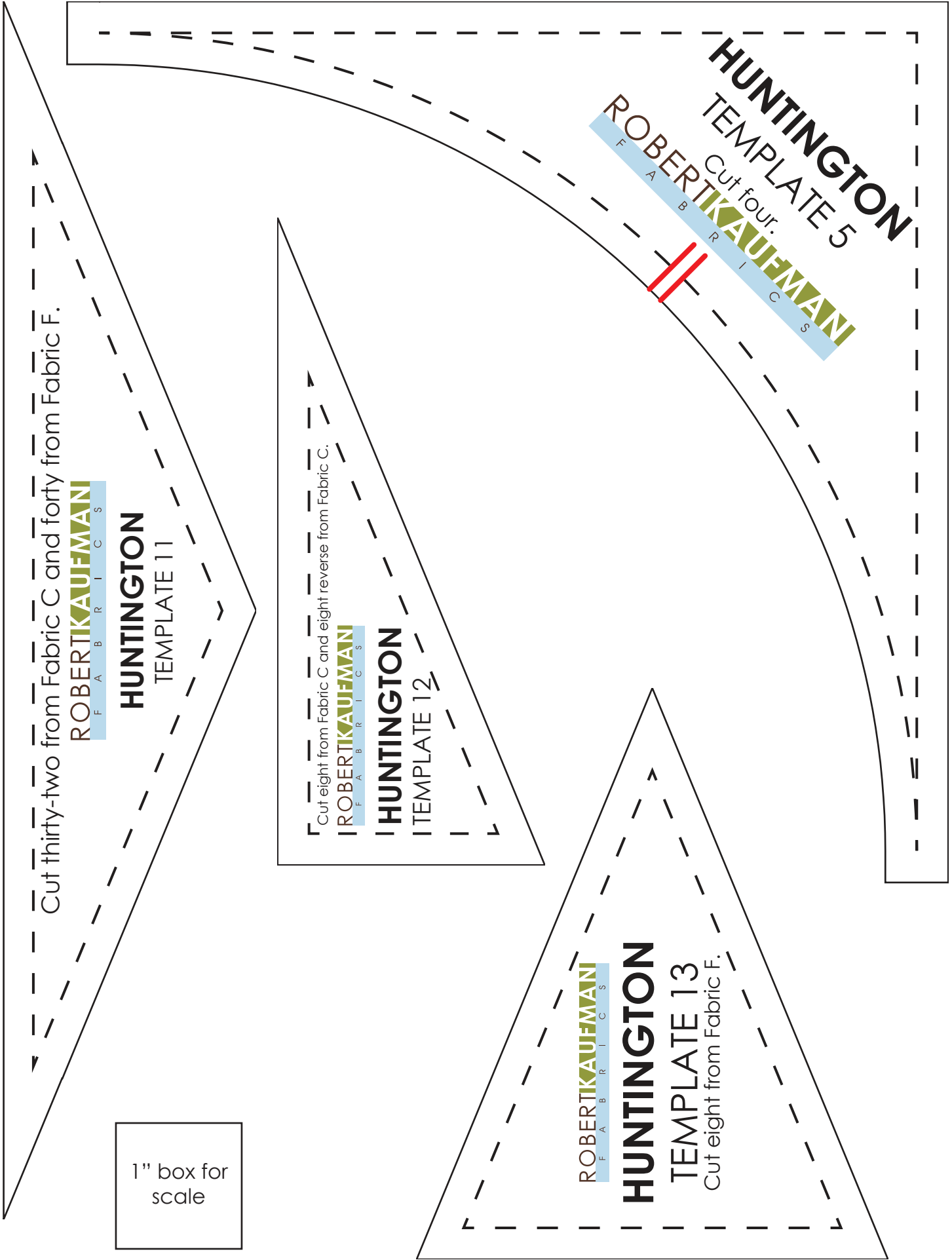


ROBERT KAUFMAN
F A B R I C S

HUNTINGTON TEMPLATE 10

Cut thirty-six from Fabric F and cut eighty
from Fabric L.

1" box for
scale



Cut thirty-two from Fabric C and forty from Fabric F.

ROBERTKAUFMAN
F A B R I C S

HUNTINGTON
TEMPLATE 11

1" box for
scale

Cut eight from Fabric C and eight reverse from Fabric C.

ROBERTKAUFMAN
F A B R I C S

HUNTINGTON
TEMPLATE 12

ROBERTKAUFMAN
F A B R I C S

HUNTINGTON
TEMPLATE 13
Cut eight from Fabric F.

HUNTINGTON
TEMPLATE 5
Cut four.
ROBERTKAUFMAN
F A B R I C S

1" box for
scale

