

# Holiday Medallion

Crimson colorstory  
designed by Toadusew Creative Concepts for Robert Kaufman Fabrics



featuring  
Holiday  
*Flourish*  
by Peggy Toole



65" x 81"



**ROBERT KAUFMAN**  
F A B R I C S  
[www.robertkaufman.com](http://www.robertkaufman.com)

Pattern will be available to download free directly from  
Robert Kaufman Fabrics' website beginning April 2011



# Holiday Medallion

Antique colorstory  
designed by Toadusew Creative Concepts for Robert Kaufman Fabrics



featuring  
Holiday  
*Flourish*  
by Peggy Toole



65" x 81"



**ROBERT KAUFMAN**  
F A B R I C S  
[www.robertkaufman.com](http://www.robertkaufman.com)

Pattern will be available to download free directly from  
Robert Kaufman Fabrics' website beginning April 2011



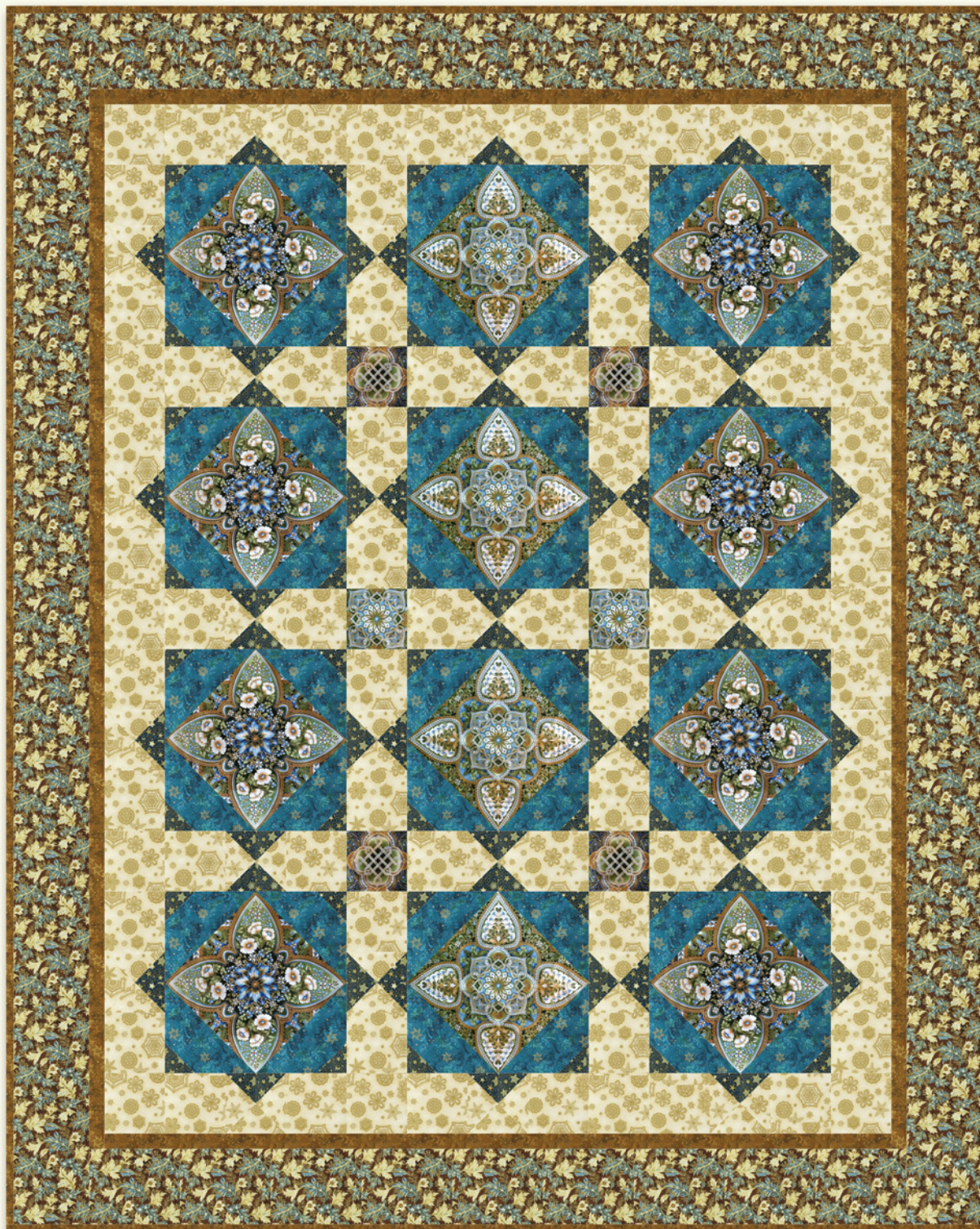
# Holiday Medallion

Frost colorstory

designed by Toadusew Creative Concepts for Robert Kaufman Fabrics



featuring  
Holiday  
*Flourish*  
by Peggy Toole



65" x 81"



ROBERT KAUFMAN

F A B R I C S

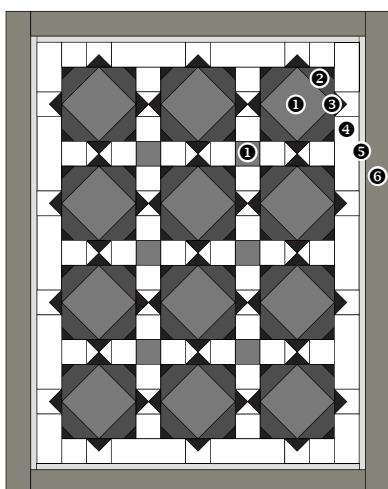
[www.robertkaufman.com](http://www.robertkaufman.com)

Pattern will be available to download free directly from  
Robert Kaufman Fabrics' website beginning April 2011



# "Holiday Medallions" 65 x 81 Featuring Holiday Flourish 4

Quilt designed by Chloe Anderson & Colleen Reale Fabrics by Peggy Toole for Robert Kaufman Fabrics

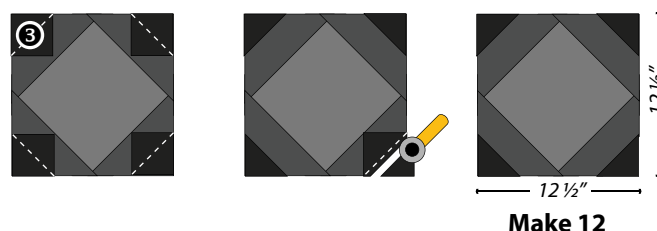


Color	Yardage	Cutting Instructions				
		# Strips	Strip Size	# Cuts	Size	Use For
1	3	non applicable - see special fussy cutting instructions		12	9" fussy cut squares	blocks
				6	4½" fussy cut squares	sashing
2	1	5	6⅞" x WOF	24	6⅞" squares	blocks
3	¾	2	5¼" x WOF	13	5¼" squares	sashing, sashed border
		3	2½" x WOF	48	2½" squares	blocks
4	1 ¾	2	5¼" x WOF	13	5¼" squares	sashing
		1	4⅞" x WOF	7	4⅞" squares	sashing, sashed border
		9	4½" x WOF	10	12½" x 4½" strips	sashed border
				4	8½" x 4½" strips	sashed border
				38	4½" squares	sashing, sashed border
5	1	8	2½" x WOF	--	reserve for quilt finishing	binding
6	1 ½	7	1½" x WOF	--	reserve for borders	small border
		8	5½" x WOF	--	reserve for borders	large border

## General Instructions

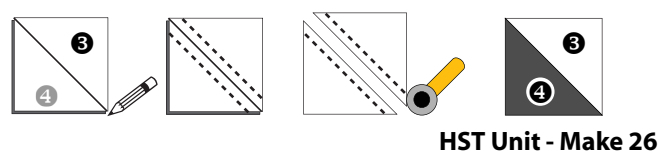
- This pattern is suitable for quilters of all levels
- WOF = width of fabric, selvage to selvage
- HST = half square triangle
- RST = right sides together
- All seams are sewn RST using a ¼" seam
- Press to the least amount of bulk unless directed
- For helpful tips and tricks for this and other quilting projects please visit our website [www.toadusew.com](http://www.toadusew.com)!

Sew the 2 ½" color 3 squares to each corner of the block. Trim to a ¼" and press seams out.

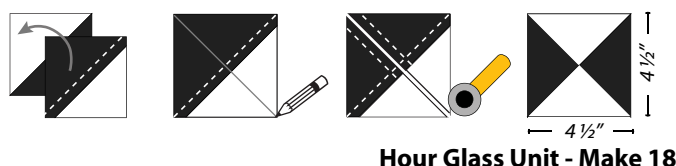


## Making the Sashing Components

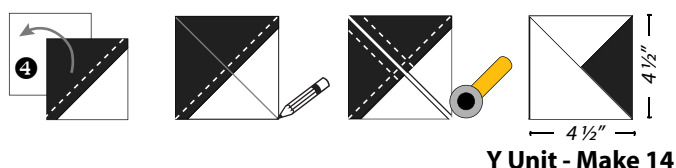
Layer a 5 ¼" color 3 square over a 5 ¼" square color 4. Sew a scant ¼" seam on either side of the marked line. Cut in half along the marked line and press to the least amount of bulk.



Mark the wrong side of nine of the HST units as illustrated. Layer two HST units, RST, with the opposite colors on top of each other as illustrated. Sew a scant ¼" seam on either side of the marked line. Cut the square in half along the marked line and press to the least amount of bulk.

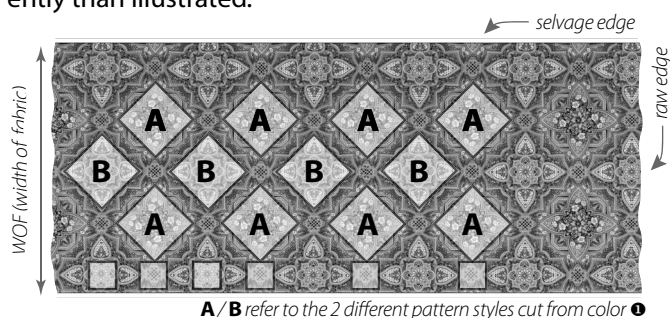


Repeat the steps above using the remaining HST units and 4 ⅞" color 4 squares as illustrated.



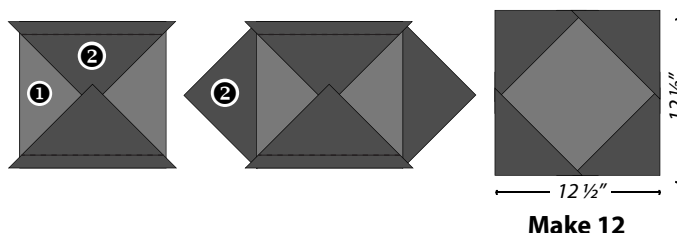
## Fussy Cutting The Focal Print

Press thoroughly and carefully fussy cut the 9" and 4 ½" squares from color 1 as illustrated below. Be sure to check that there is enough fabric before cutting differently than illustrated.



## Making the Blocks

Sew two color 2 triangles (cut from the 6 ⅞" squares) to either side of the color 1 squares. To insure the centers of the triangles and center square line up, fold in half and mark the center, line up the center marks and pin prior to sewing. Sew the remaining triangles to the color 1 squares, repeating the same steps. Press seams out.



## Making the Sashing

Sew two 4 1/2" color ④ squares to either side of the Hour Glass Units as illustrated. Next sew two 4 1/2" color ① squares to three sashing units as illustrated. Press to the least amount of bulk.



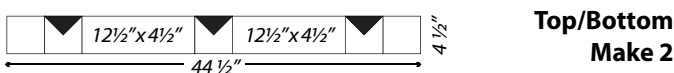
**Sashing Unit - Make 17**



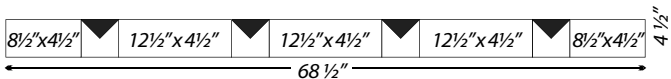
**Sashing Strip - Make 3**

## Making the Sashed Border

Sew the color ④ 4 1/2" squares, 12 1/2" x 4 1/2" strips, 8 1/2" x 4 1/2" strips and Y Units together into rows as illustrated.



**Top/Bottom  
Make 2**

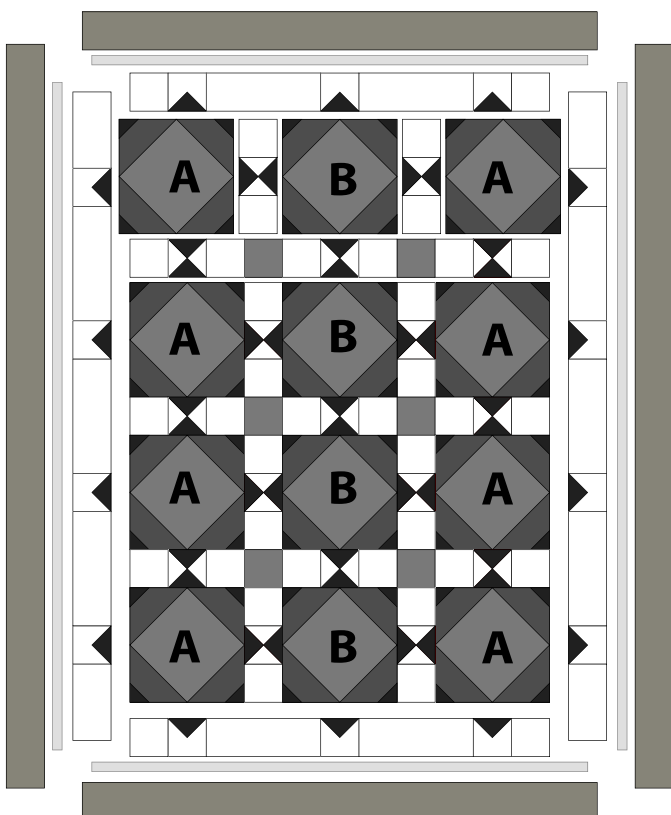


**Sides - Make 2**

## Assembling the Quilt

Using the blocks, remaining sashing units and sashed borders, assemble the center of the quilt as illustrated. Join the strips reserved for each border to achieve the required length, listed below. Add the small border, sides first, followed by the large border. Press all seams to the least amount of bulk.

Small Border (color ⑤)		Large Border (color ⑥)	
Sides	68 1/2" x 1 1/2"	Sides	70 1/2" x 5 1/2"
Top/Bottom	54 1/2" x 1 1/2"	Top/Bottom	64 1/2" x 5 1/2"



## Quilting

Layer and baste the quilt top, batting and backing. Quilting in the ditch should be done first. Working from the center and sewing the straight lines first will stabilize the quilt for any additional quilting.

Finish any quilting that can be completed with the walking foot prior to free motion quilting.

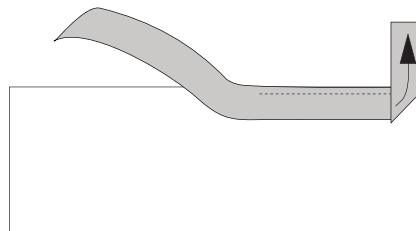
Pull the bobbin thread up to the top by holding the top thread and dropping the down and up once. Pull the top thread back up to the top and the bobbin thread will follow it.

Lock stitches by gently holding the fabric in place and allowing the machine to move the quilt under the needle in very small increments. Sew 6-8 small stitches and release fabric to sew at normal stitch length.

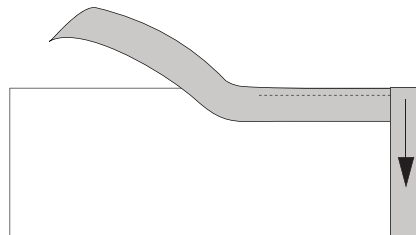
## Binding

Trim the quilt and join the binding strips together into one long strip. Press the long strip in half lengthwise, wrong sides together.

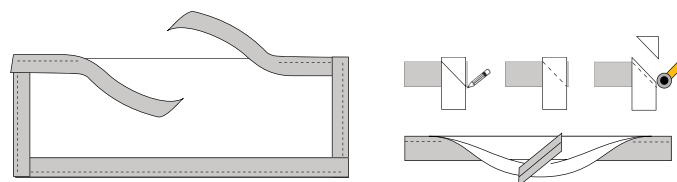
Leave a 12" tail at the starting point and sew the binding onto the front of the quilt, aligning raw edges. Stop sewing a quarter inch from the corner and lock the stitches.



Fold the binding away from the quilt and then back toward the quilt. Align the binding with the raw edges of the quilt. Begin stitching at the edge of the next side, back stitch to secure and continue sewing. Repeat for all corners.



Stop and secure the stitches 8" before the starting point. Overlap the tails and trim so that the overlap is equal to the unfolded width of the binding. Join the ends together illustrated. Press the binding away from the quilt and sew to the back side by hand.



For free quilting & finishing tips please visit our website:  
[www.toadusew.com](http://www.toadusew.com)