

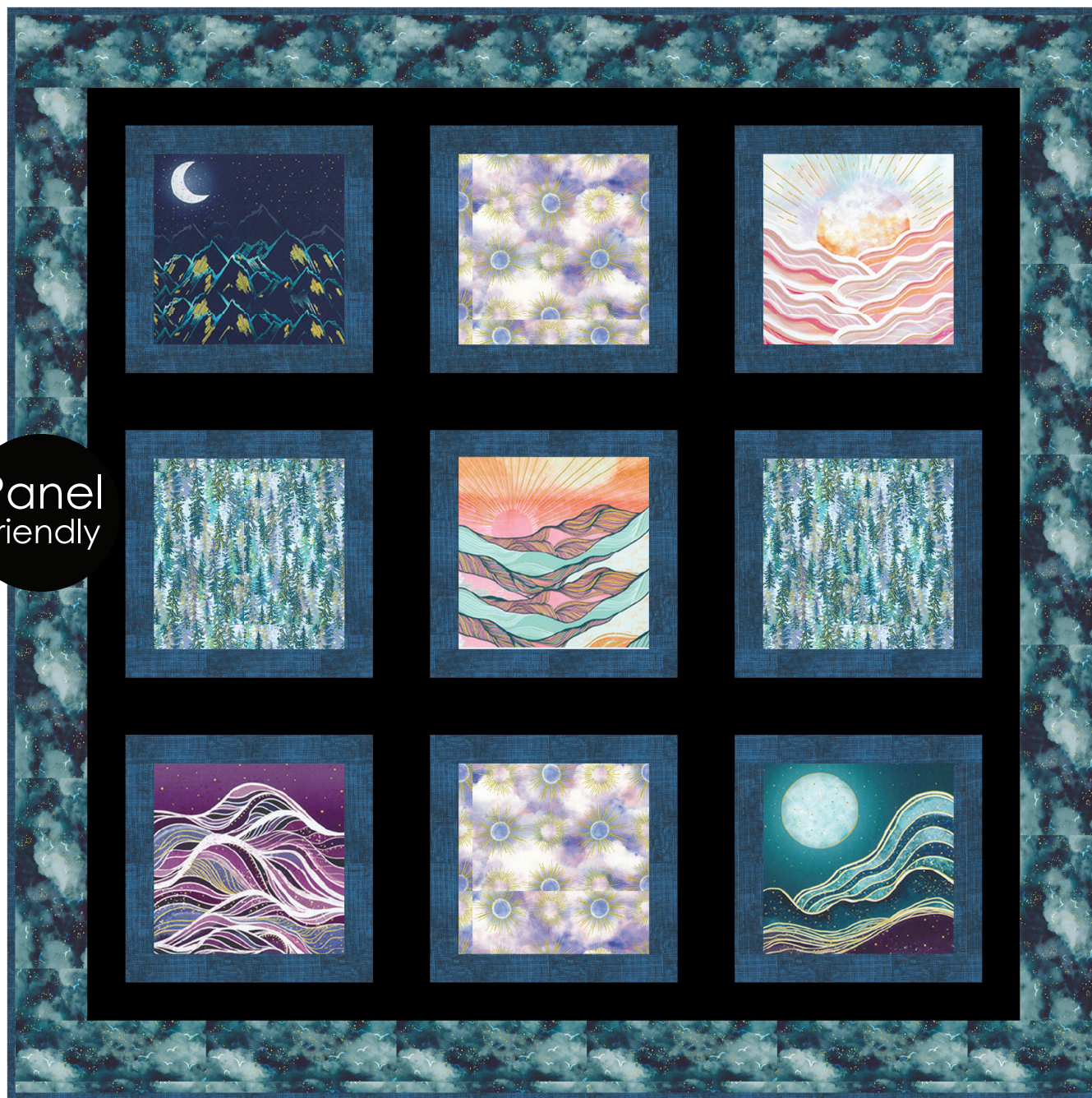
HILL SHINE

Designed by Ariga Wilson for RK
www.robertkaufman.com

Featuring

Hill Shine
ROSE HALSEY

Panel
Friendly



Finished quilt measures: 57" x 57"




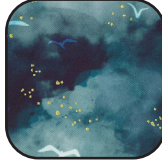

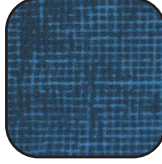
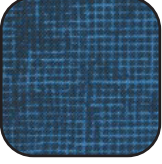
Difficulty Rating: **Beginner**

ROBERTKAUFMAN
F A B R I C S

For questions about this pattern, please email Patterns@RobertKaufman.com.

Fabric and Supplies Needed

Fabric amounts based on yardage that is 42" wide.

Color	Fabric	Name/SKU	Yardage	Color	Fabric	Name/SKU	Yardage
	A	RRHDM-23237-268 NATURE	2/3 yard (one complete panel)		E	K001-1019 BLACK	1 yard
	B	RRHDM-23242-21 LILAC	1/3 yard		F	RRHDM-23243-69 MIDNIGHT	7/8 yard
	C	RRHDM-23239-245 MIST	1/3 yard		Binding*	AJSXD-18973-9 NAVY	1/2 yard
	D	AJSXD-18973-9 NAVY	3/4 yard	<p>You will also need: 3-5/8 yards for backing</p>			
<p>Copyright 2025, Robert Kaufman For individual use only - Not for resale</p>							

Notes Before You Begin

- Read through all of the instructions before beginning.
- All of the seam allowances are 1/4" unless otherwise noted.
- Press seam allowances open unless otherwise noted.
- Width of fabric (WOF) is equal to at least 42" wide.
- Right sides together has been abbreviated to RST.
- Remember to measure twice and cut once!

Cutting Instructions

From Fabric A, fussy cut:

five 10-1/2" squares centered on the motifs

From each of Fabrics B and C, cut:

one 10-1/2" x WOF strip of each fabric. Subcut:
two 10-1/2" squares of each fabric

From Fabric D, cut:

eleven 2" x WOF strips. Subcut:
eighteen 2" x 13-1/2" rectangles
eighteen 2" x 10-1/2" rectangles

From Fabric E, cut:

six 3-1/2" x WOF strips.
six 3-1/2" x 13-1/2" vertical sashing strips
Sew the remaining four strips together, then subcut:
three 3-1/2" x 45-1/2" horizontal sashing strips.
five 2-1/2" x WOF strips. Sew the strips together, then subcut:
two 2-1/2" x 49-1/2" top/bottom inner borders
two 2-1/2" x 45-1/2" side inner borders

From Fabric F, cut:

six 4-1/2" x WOF strips. Sew the strips together, then subcut:
two 4-1/2" x 57-1/2" top/bottom outer borders
two 4-1/2" x 49-1/2" side outer borders

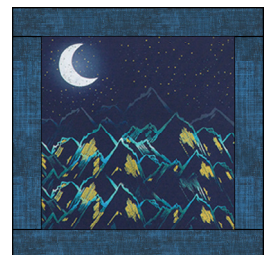
From the Binding Fabric, cut:

six 2-1/2" x WOF strips

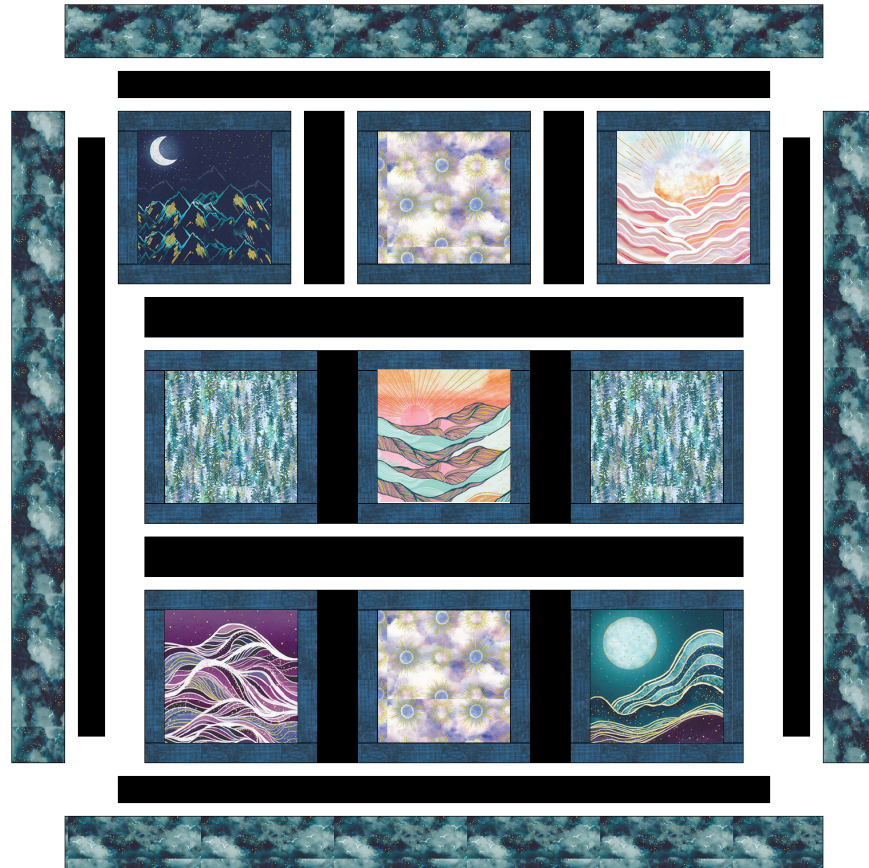
Assemble the Blocks

Step 1: Sew a 10-1/2" Fabric A, B, or C square between two 2" x 10-1/2" Fabric D rectangles. Press the seams toward the rectangles. Sew a 2" x 13-1/2" Fabric D rectangle to the top and bottom edges of the unit. Press the seams toward the rectangles to complete the block.

Repeat to make a total of nine blocks.



Templates



Step 2: Arrange the blocks into three rows of three blocks. Note the fabric placement and block orientation in the Quilt Assembly Diagram.

Step 3: Separate the blocks in each row with a 3-1/2" x 13-1/2" vertical sashing strip.

Step 4: Sew the blocks and vertical sashing strips together to form rows. Press the seams toward the sashing strips.

Step 5: Separate the rows with a 3-1/2" x 45-1/2" horizontal sashing strip. Press the seams toward the sashing strips.

Step 6: Sew the rows and horizontal sashing strip together to form the quilt center. Press the seams toward the sashing strips.

Step 7: Sew the side inner borders to the sides of the quilt center. Press toward the borders. Sew the top and bottom inner borders to the quilt center. Press toward the borders.

Step 8: Sew the side outer borders to the sides of the quilt center. Press toward the borders. Sew the top and bottom outer borders to the quilt center. Press toward the borders.

Your quilt top is complete! Baste, quilt, bind, and enjoy!

This pattern may be used for personal purposes only and may not be reproduced in any form without the express permission from Robert Kaufman Fabrics. This pattern is not for resale. All patterns, unless otherwise attributed, are © Robert Kaufman Co., Inc. 2005-2025. All rights reserved.